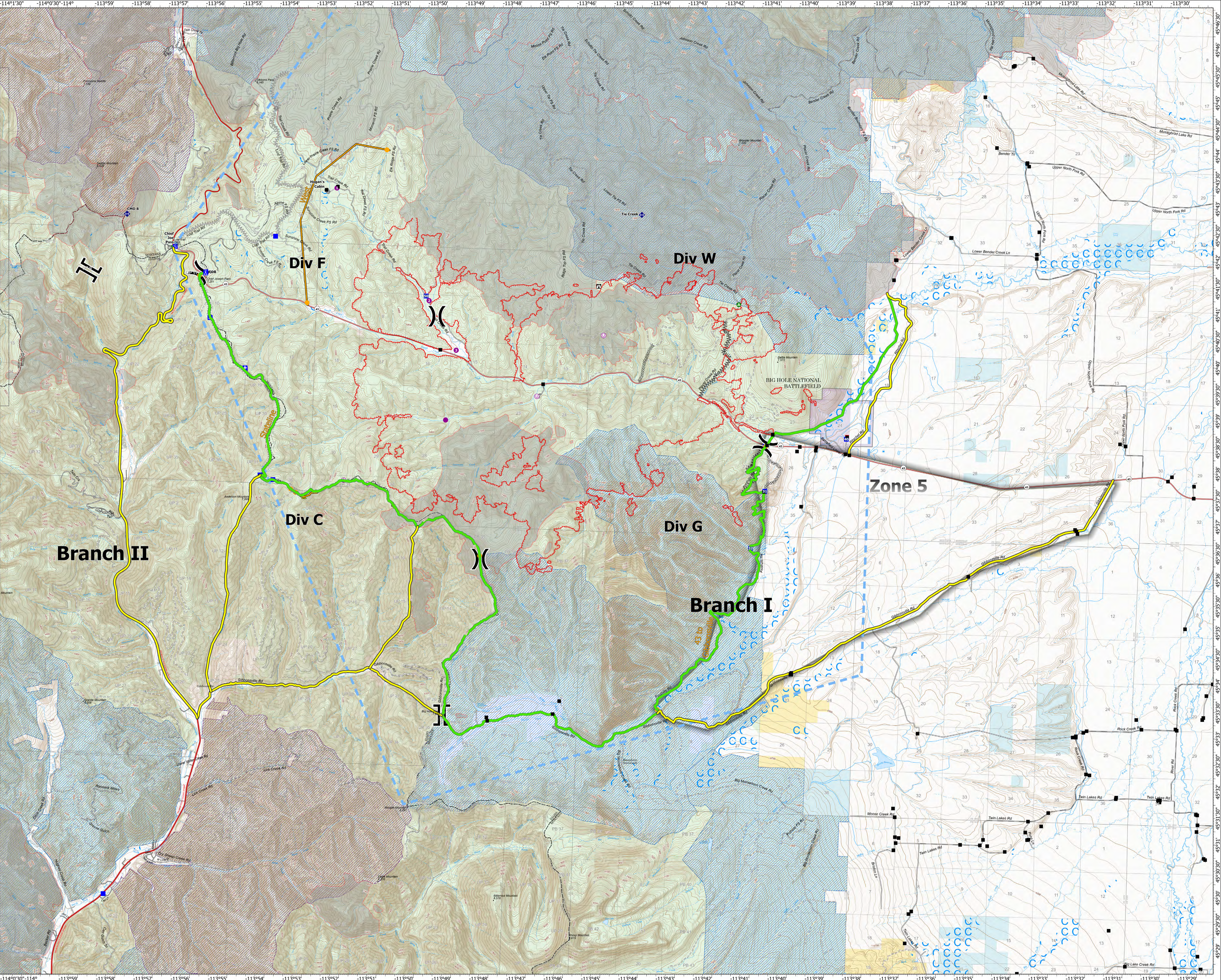


PACE

Ipsum Lorem
Ipsum Lorem
Ipsum Lorem

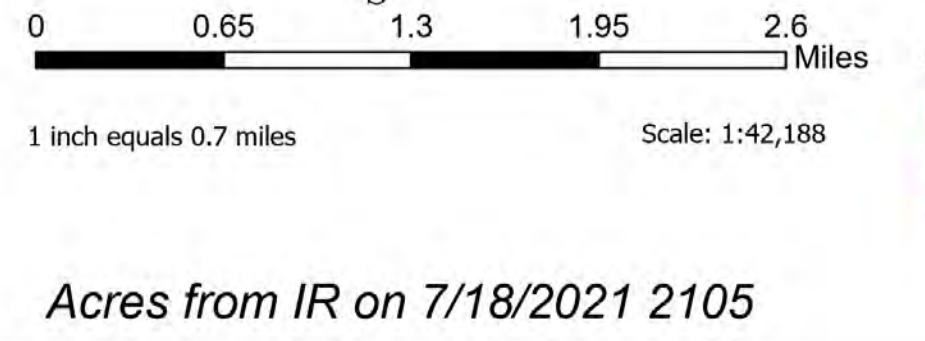
MAPs

MAPs are currently under development.



PACE

Trail Creek
 MT-BDF-006272
 7/20/2021 Day
 23,090 Acres



- | | | | | | | | |
|--|--|--|---|--|---|--|--|
| <p>PACE Level</p> <ul style="list-style-type: none"> — Primary — Alternate — Management Action Points-Trail ■ Structures ● Air Operations ● Hellsport ● Sling Site ○ Unimproved Landing Area | <p>Assignment Breaks</p> <ul style="list-style-type: none"> () Division Break () Branch Break + Logistics | <p>Operations</p> <ul style="list-style-type: none"> ■ Drop Point ■ Camp ■ Staging Area ■ Lookout ● Value at Risk ● Other ○ Bridge | <p>Reference</p> <ul style="list-style-type: none"> ▲ Landing or Log Deck ● Clean Up Area ● Communications ● Repeater ▲ Safety Zone ● Ops Completed ● Completed Dozer Line | <p>Management Action Points</p> <ul style="list-style-type: none"> M Completed Fuel Break M Ops Planned M Planned Dozer Line M Planned Fuel Break M Planned Hand Line M Planned Secondary Line M Air Ops M Temporary Flight Restriction | <p>Fire Perimeter</p> <ul style="list-style-type: none"> — Fire Edge — Forest Service Roads Open — Paved — Gravel Road — Dirt Road — Unimproved Road — Forest Service Roads Closed — Forest Service Roads Closed | <p>Land Management</p> <ul style="list-style-type: none"> ■ Forest Service Land ■ Other State Lands ■ Bureau of Land Management Lands ■ National Park Service Lands ■ Grazing Allotment ■ Active Allotment ■ Vacant Allotment ■ Interagency Fire Perimeter History ■ Evacuation Zone | <p>Management Action Points - Christensen</p> <ul style="list-style-type: none"> — Management Action Points - Christensen — HIFLD Roads selection |
|--|--|--|---|--|---|--|--|



SA Blue Team
 7/20/2021 1740
 North American 1983 Datum, Lat,Long Grid