

# PACE

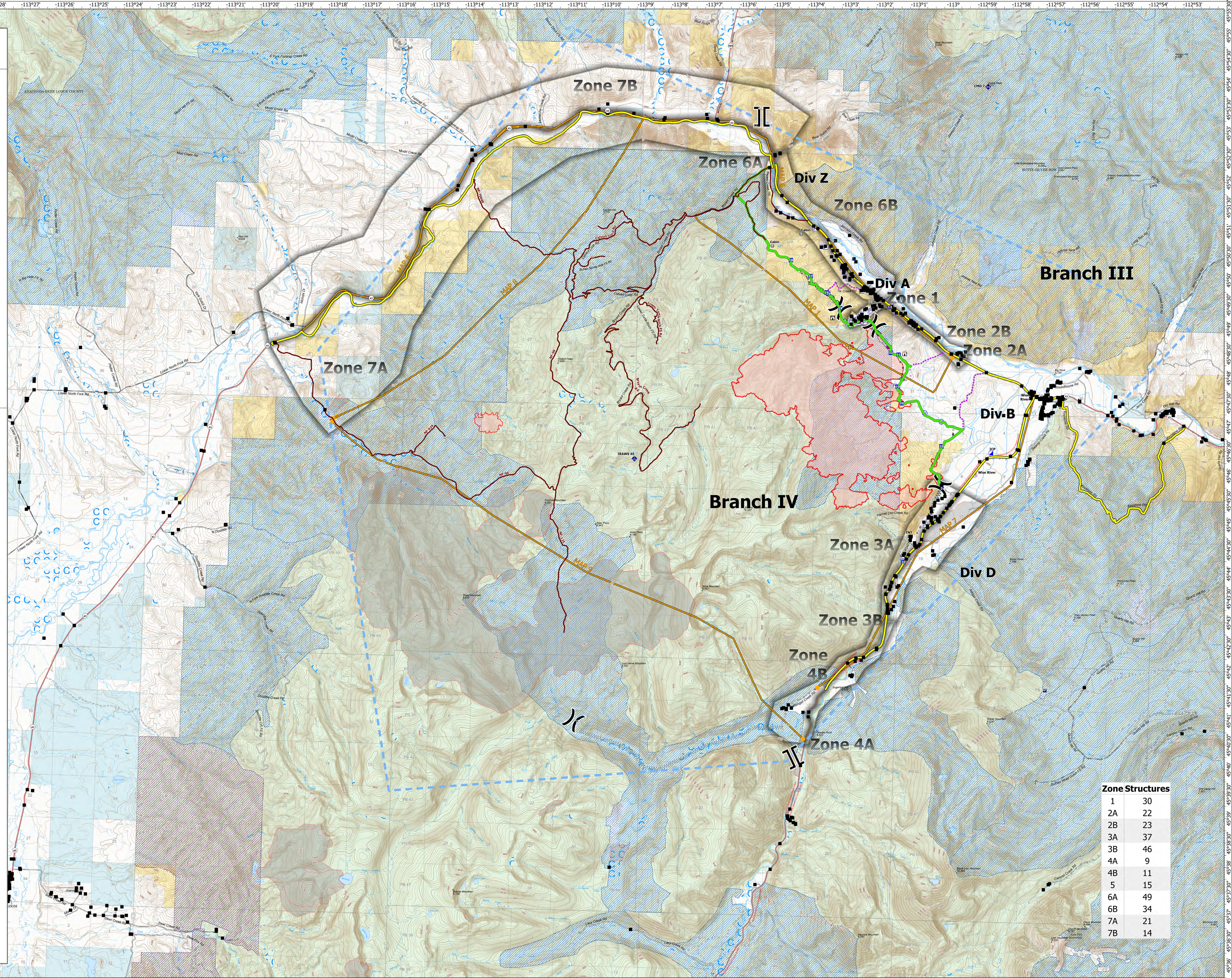
Ipsum Lorem Ipsum Lorem Ipsum Lorem Ipsum Lorem

# MAPs

**MAP 6**  
 Performing a re-evaluation of the Organizational Needs Assessment;  
 Amending and expanding area/road/trail closures;  
 Scout & identify additional contingency lines;  
 Engagement with the Beaverhead County Sheriff's Office re: implementation of an Evacuation Plan;  
 Ensure good cooperation with impacted partners, homeowners, & land/home owners in/around the vicinity of Wise River, MT;  
 Continued communication and coordination with any potentially affected permittees;  
 Coordination with Montana Dept. of Transportation (MT DOT) & Montana Highway Patrol (MT MHP) re: potential flaggers or closure(s) on Hwy 43;  
 Coordination with Deer Lodge County & Silver Bow Counties, including respective Sheriffs, Commissioners, & Dept of Emergency Services (DES);  
 Coordinate with Montana Fish, Wildlife;

**MAP 7**  
 Performing a re-evaluation of the Organizational Needs Assessment, complexity analysis;  
 Recommend formal closure of the the Pioneer Scenic Byway;  
 Coordinate with Wise River Volunteer Fire Dept. (VFD) for structure assessments;  
 Adjust USFS & BLM access closures;  
 Explore relocating the current ICP.

**MAP 1**  
 Performing a re-evaluation of the Organizational Needs Assessment;  
 Amending and expanding area/road/trail closures;  
 Scout & identify additional contingency lines;  
 Engagement with the Beaverhead County Sheriff's Office re: implementation of an Evacuation Plan;  
 Ensure good cooperation with impacted partners, homeowners, & land/home owners in/around the vicinity of Wise River, MT  
 Continued communication and coordination with any potentially affected permittees;  
 Coordination with MT DOT & MT MPH re: potential flaggers or closure(s) on Hwy 43.



Zone Structures	
1	30
2A	22
2B	23
3A	37
3B	46
4A	9
4B	11
5	15
6A	49
6B	34
7A	21
7B	14



**PACE**  
 Alder Creek  
 MT-BDF-006269  
 7/20/2021 Day  
 5,670 Acres

Acres from IR on 7/18/2021 2105

0 0.95 1.9 2.85 3.8 Miles  
 1 inch equals 0.7 miles  
 Scale: 1:45,776



- PACE Level
  - Primary
  - Alternate
  - Management Action Points-Alder
  - Structures
- Event Point
  - Aerial Hazard
  - Airstrip or Airport
  - Check Point
  - Dip Site
  - Mobile Retardant Base
  - Helispot
- Helibase
- Sling Site
- Unimproved Landing Area
- Assignment Breaks
- ) Division Break
- ] Branch Break
- | Zone Break
- + Medical
- + Incident Command Post
- + Drop Point
- + Closure
- + Camp
- + Staging Area
- + Lookout
- + Fire
  - + Hot Spot - Spot Fire
  - + Fire Origin
- + Value at Risk
- + Other
- + Landmark
- + Gate
- + Fire Station
- + Bridge
- + Repair
  - + Water Development or Draft Site
  - + Structure Wrap
  - + Stream Crossing
  - + Road Repair
  - + Retardant in Avoidance Area
- + Resource Location
- + Repair Point
- + Landing or Log Deck
- + Hazard
- + Fence - Cut/Damaged
- + Dozer Push
- + Culvert
- + Clean Up Area
- + Communications
  - + Mobile Weather Unit
  - + Internet Access
  - + Repeater
- + Safety
  - + Safety Zone
  - + Hazard
  - + Water
    - + Water Source
    - + Restricted Water Source
- + Event Line
  - + Ops Completed
  - + Completed Burnout
  - + Completed Dozer Line
  - + Completed Fuel Break
  - + Completed Hand Line
  - + Completed Mixed Construction Line
- + Safety
  - + Planned Burnout
  - + Planned Dozer Line
  - + Planned Fuel Break
  - + Planned Mixed Construction Line
  - + Planned PLOW Line
  - + Planned Road as Line
  - + Planned Secondary Line
  - + Reference
  - + Access or Improved Road
- + Fence
- + Highlighted Feature
- + Management Action Point
- + Other
  - + Repair Line
  - + Road Repair
  - + Safety
  - + Escape Route
  - + Air Ops
  - + Aerial Hazard
  - + Water Drop
  - + Foam Drop

