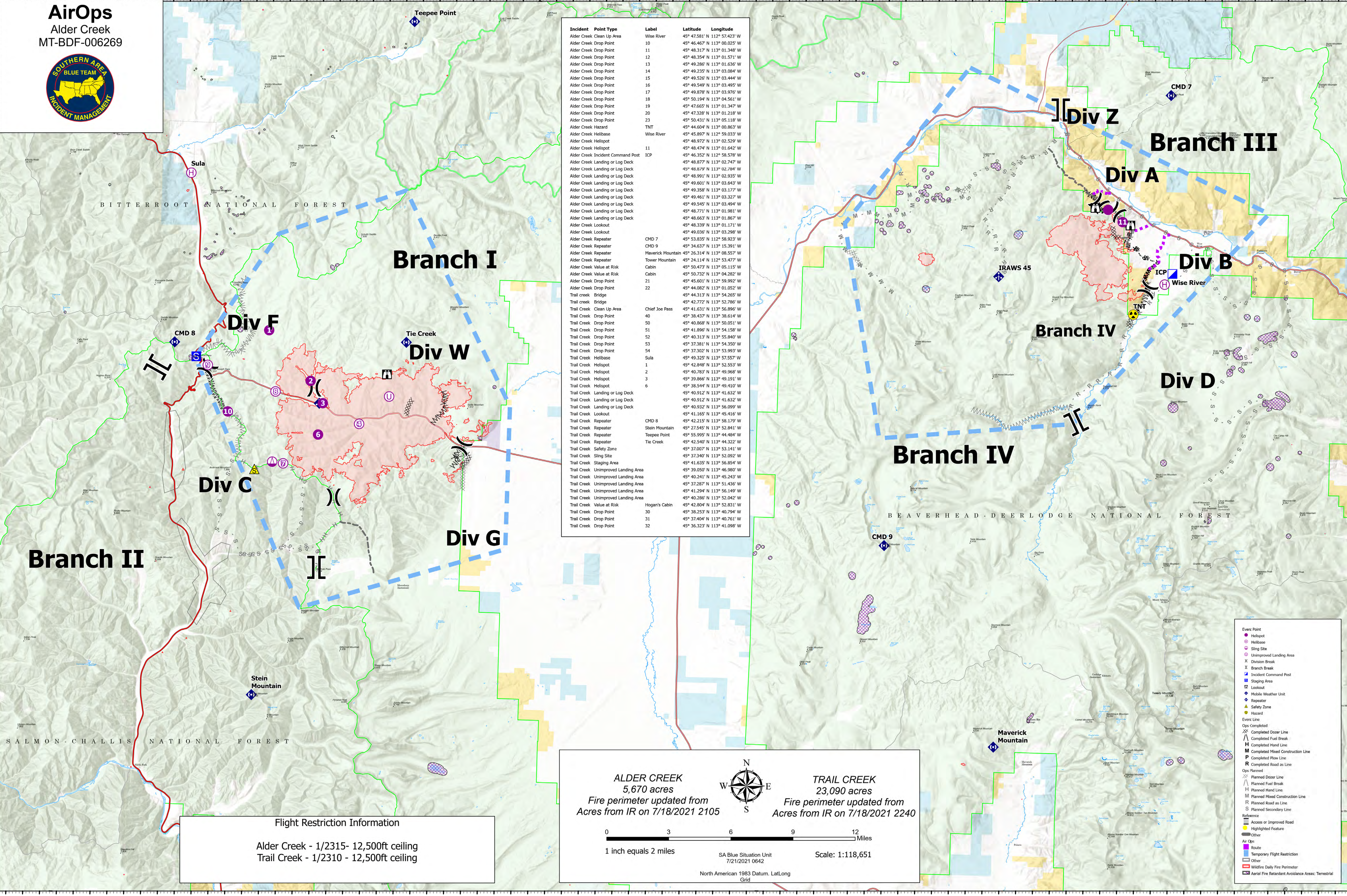


**AirOps**  
Alder Creek  
MT-BDF-006269



Incident Point Type	Label	Latitude	Longitude
Alder Creek Clean Up Area	Wise River	45° 47.581' N 112° 57.423' W	
Alder Creek Drop Point	10	45° 46.467' N 113° 00.025' W	
Alder Creek Drop Point	11	45° 48.317' N 113° 01.348' W	
Alder Creek Drop Point	12	45° 48.354' N 113° 01.571' W	
Alder Creek Drop Point	13	45° 49.286' N 113° 01.636' W	
Alder Creek Drop Point	14	45° 49.235' N 113° 03.084' W	
Alder Creek Drop Point	15	45° 49.526' N 113° 03.444' W	
Alder Creek Drop Point	16	45° 49.549' N 113° 03.495' W	
Alder Creek Drop Point	17	45° 49.878' N 113° 03.976' W	
Alder Creek Drop Point	18	45° 50.194' N 113° 04.561' W	
Alder Creek Drop Point	19	45° 47.665' N 113° 01.347' W	
Alder Creek Drop Point	20	45° 47.328' N 113° 01.218' W	
Alder Creek Drop Point	23	45° 50.431' N 113° 05.118' W	
Alder Creek Hazard	TNT	45° 44.604' N 113° 00.863' W	
Alder Creek Helibase	Wise River	45° 45.897' N 112° 59.033' W	
Alder Creek Helispot		45° 48.972' N 113° 02.529' W	
Alder Creek Helispot	11	45° 48.474' N 113° 01.642' W	
Alder Creek Incident Command Post	ICP	45° 46.352' N 112° 58.578' W	
Alder Creek Landing or Log Deck		45° 48.877' N 113° 02.747' W	
Alder Creek Landing or Log Deck		45° 48.879' N 113° 02.784' W	
Alder Creek Landing or Log Deck		45° 48.991' N 113° 02.935' W	
Alder Creek Landing or Log Deck		45° 49.601' N 113° 03.643' W	
Alder Creek Landing or Log Deck		45° 49.358' N 113° 03.177' W	
Alder Creek Landing or Log Deck		45° 49.461' N 113° 03.327' W	
Alder Creek Landing or Log Deck		45° 49.545' N 113° 03.494' W	
Alder Creek Landing or Log Deck		45° 48.771' N 113° 01.981' W	
Alder Creek Landing or Log Deck		45° 48.663' N 113° 01.867' W	
Alder Creek Lookout		45° 48.339' N 113° 01.171' W	
Alder Creek Lookout		45° 49.036' N 113° 03.298' W	
Alder Creek Repeater		45° 53.835' N 112° 58.923' W	
Alder Creek Repeater	CMD 7	45° 34.637' N 113° 15.391' W	
Alder Creek Repeater	CMD 9	45° 26.314' N 113° 08.557' W	
Alder Creek Repeater	Maverick Mountain	45° 24.114' N 113° 08.557' W	
Alder Creek Repeater	Tower Mountain	45° 50.473' N 113° 05.115' W	
Alder Creek Value at Risk	Cabin	45° 50.732' N 113° 04.282' W	
Alder Creek Drop Point	21	45° 45.601' N 112° 59.992' W	
Alder Creek Drop Point	22	45° 44.082' N 113° 01.052' W	
Trail creek Bridge		45° 44.313' N 113° 54.265' W	
Trail creek Bridge		45° 42.772' N 113° 52.786' W	
Trail Creek Clean Up Area	Chief Joe Pass	45° 41.631' N 113° 56.896' W	
Trail Creek Drop Point	40	45° 38.437' N 113° 38.614' W	
Trail Creek Drop Point	50	45° 40.868' N 113° 50.051' W	
Trail Creek Drop Point	51	45° 41.896' N 113° 54.158' W	
Trail Creek Drop Point	52	45° 40.313' N 113° 55.840' W	
Trail Creek Drop Point	53	45° 37.381' N 113° 54.350' W	
Trail Creek Drop Point	54	45° 37.302' N 113° 53.993' W	
Trail Creek Helibase	Sula	45° 49.325' N 113° 57.557' W	
Trail Creek Helispot	1	45° 42.848' N 113° 52.553' W	
Trail Creek Helispot	2	45° 40.783' N 113° 49.968' W	
Trail Creek Helispot	3	45° 39.866' N 113° 49.191' W	
Trail Creek Helispot	6	45° 38.544' N 113° 49.410' W	
Trail Creek Landing or Log Deck		45° 40.912' N 113° 41.632' W	
Trail Creek Landing or Log Deck		45° 40.932' N 113° 56.099' W	
Trail Creek Lookout		45° 41.165' N 113° 45.416' W	
Trail Creek Repeater	CMD 8	45° 42.215' N 113° 58.179' W	
Trail Creek Repeater	Stein Mountain	45° 27.545' N 113° 52.841' W	
Trail Creek Repeater	Teepee Point	45° 55.995' N 113° 44.484' W	
Trail Creek Repeater	Tie Creek	45° 42.540' N 113° 44.322' W	
Trail Creek Safety Zone		45° 37.007' N 113° 52.141' W	
Trail Creek Sling Site		45° 37.340' N 113° 52.092' W	
Trail Creek Staging Area		45° 41.635' N 113° 56.854' W	
Trail Creek Unimproved Landing Area		45° 39.050' N 113° 46.980' W	
Trail Creek Unimproved Landing Area		45° 40.241' N 113° 45.243' W	
Trail Creek Unimproved Landing Area		45° 37.287' N 113° 51.436' W	
Trail Creek Unimproved Landing Area		45° 41.294' N 113° 56.149' W	
Trail Creek Unimproved Landing Area		45° 40.286' N 113° 52.042' W	
Trail Creek Value at Risk	Hogan's Cabin	45° 42.804' N 113° 52.831' W	
Trail Creek Drop Point	30	45° 38.253' N 113° 40.794' W	
Trail Creek Drop Point	31	45° 37.404' N 113° 40.761' W	
Trail Creek Drop Point	32	45° 36.323' N 113° 41.098' W	



**Flight Restriction Information**  
Alder Creek - 1/2315 - 12,500ft ceiling  
Trail Creek - 1/2310 - 12,500ft ceiling

**ALDER CREEK**  
5,670 acres  
Fire perimeter updated from IR on 7/18/2021 2105

**TRAIL CREEK**  
23,090 acres  
Fire perimeter updated from IR on 7/18/2021 2240

0 3 6 9 12 Miles  
1 inch equals 2 miles  
SA Blue Situation Unit  
7/21/2021 0642  
North American 1983 Datum, Lat/Long Grid  
Scale: 1:118,651

- Event Point
- Helispot
- Helibase
- Sling Site
- Unimproved Landing Area
- Division Break
- Branch Break
- Incident Command Post
- Staging Area
- Lookout
- Mobile Weather Unit
- Repeater
- Safety Zone
- Hazard
- Event Line
- Ops Completed
- Completed Dozer Line
- Completed Fuel Break
- Completed Hand Line
- Completed Mixed Construction Line
- Completed Plow Line
- Completed Road as Line
- Ops Planned
- Planned Dozer Line
- Planned Fuel Break
- Planned Hand Line
- Planned Mixed Construction Line
- Planned Road as Line
- Planned Secondary Line
- Reference
- Access or Improved Road
- Highlighted Feature
- Other
- Air Ops
- Route
- Temporary Flight Restriction
- Wildfire Daily Fire Perimeter
- Aerial Fire Retardant Avoidance Areas: Terrestrial