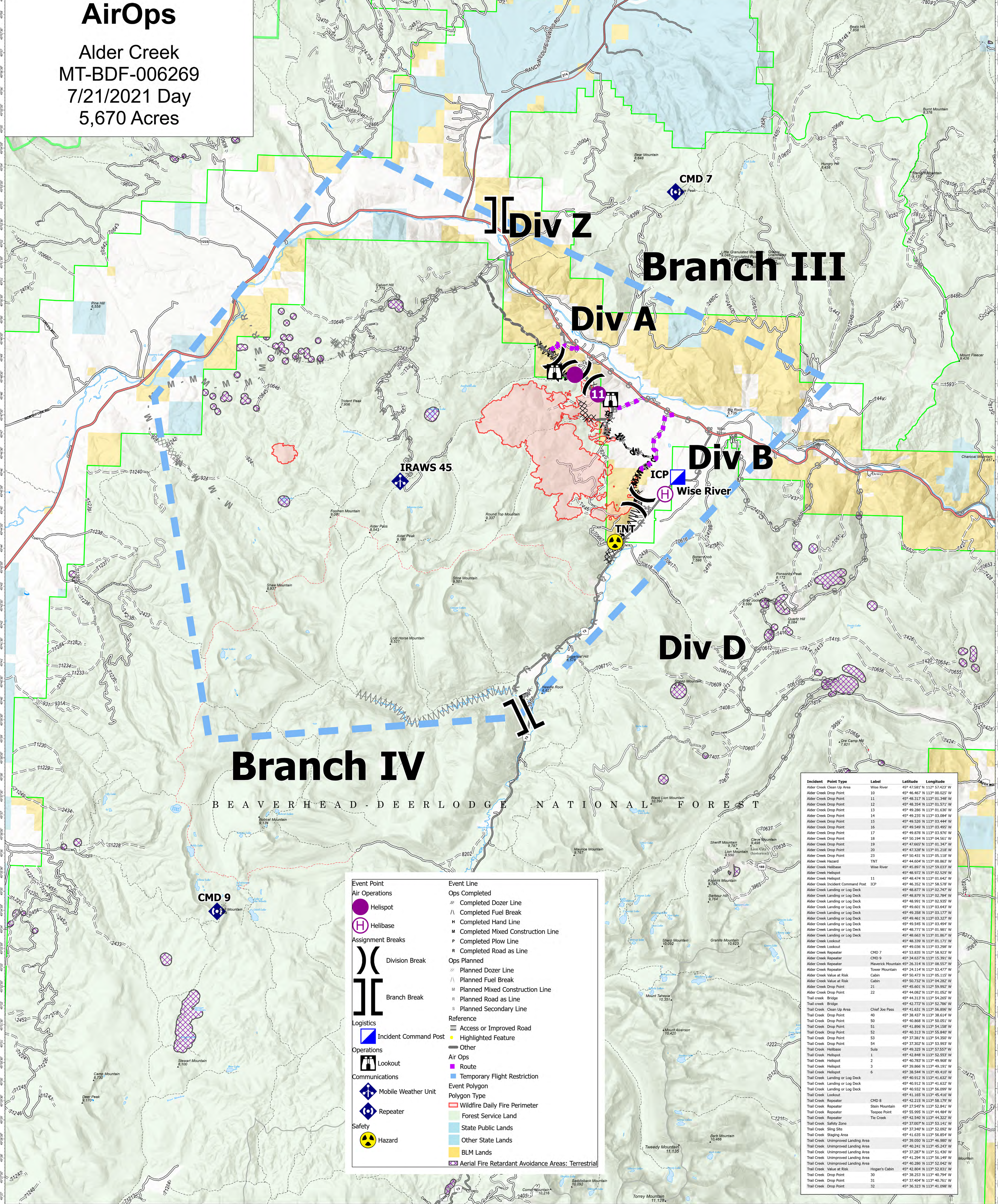


# AirOps

Alder Creek  
MT-BDF-006269  
7/21/2021 Day  
5,670 Acres



## Branch IV

BEAVERHEAD-DEERLODGE NATIONAL FOREST

Event Point		Event Line	
	Helispot		Ops Completed
	Helibase		Completed Dozer Line
	Assignment Breaks		Completed Fuel Break
	Division Break		Completed Hand Line
	Branch Break		Completed Mixed Construction Line
	Ops Planned		Completed Plow Line
	Planned Dozer Line		Completed Road as Line
	Planned Fuel Break		Ops Planned
	Planned Mixed Construction Line		Planned Dozer Line
	Planned Road as Line		Planned Fuel Break
	Planned Secondary Line		Planned Mixed Construction Line
	Reference		Planned Road as Line
	Access or Improved Road		Planned Secondary Line
	Highlighted Feature		Other
	Other		Air Ops
	Incident Command Post		Route
	Lookout		Temporary Flight Restriction
	Mobile Weather Unit		Event Polygon
	Repeater		Polygon Type
	Hazard		Wildfire Daily Fire Perimeter
			Forest Service Land
			State Public Lands
			Other State Lands
			BLM Lands
			Aerial Fire Retardant Avoidance Areas: Terrestrial

Incident Point Type	Label	Latitude	Longitude
Alder Creek Clean Up Area	Wise River	45° 47.581' N	113° 51.423' W
Alder Creek Drop Point	10	45° 46.467' N	113° 00.025' W
Alder Creek Drop Point	11	45° 48.317' N	113° 01.348' W
Alder Creek Drop Point	12	45° 48.354' N	113° 01.571' W
Alder Creek Drop Point	13	45° 49.286' N	113° 01.636' W
Alder Creek Drop Point	14	45° 49.235' N	113° 03.084' W
Alder Creek Drop Point	15	45° 49.526' N	113° 03.444' W
Alder Creek Drop Point	16	45° 49.549' N	113° 03.495' W
Alder Creek Drop Point	17	45° 49.578' N	113° 03.570' W
Alder Creek Drop Point	18	45° 50.194' N	113° 04.563' W
Alder Creek Drop Point	19	45° 47.665' N	113° 01.347' W
Alder Creek Drop Point	20	45° 47.328' N	113° 01.218' W
Alder Creek Drop Point	21	45° 50.833' N	113° 01.138' W
Alder Creek Hazard	TNT	45° 44.604' N	113° 00.865' W
Alder Creek Helibase	Wise River	45° 45.897' N	112° 59.033' W
Alder Creek Helispot	11	45° 48.972' N	113° 02.529' W
Alder Creek Helispot	12	45° 48.714' N	113° 01.842' W
Alder Creek Incident Command Post	ICP	45° 46.352' N	112° 58.578' W
Alder Creek Landing or Log Deck	40	45° 48.877' N	113° 02.747' W
Alder Creek Landing or Log Deck	41	45° 48.877' N	113° 02.747' W
Alder Creek Landing or Log Deck	42	45° 48.877' N	113° 02.747' W
Alder Creek Landing or Log Deck	43	45° 48.877' N	113° 02.747' W
Alder Creek Landing or Log Deck	44	45° 49.601' N	113° 03.643' W
Alder Creek Landing or Log Deck	45	45° 49.358' N	113° 03.177' W
Alder Creek Landing or Log Deck	46	45° 49.461' N	113° 03.327' W
Alder Creek Landing or Log Deck	47	45° 49.545' N	113° 03.494' W
Alder Creek Landing or Log Deck	48	45° 48.771' N	113° 01.981' W
Alder Creek Landing or Log Deck	49	45° 48.663' N	113° 01.867' W
Alder Creek Lookout	50	45° 48.239' N	113° 01.171' W
Alder Creek Lookout	51	45° 49.286' N	113° 01.298' W
Alder Creek Repeater	CMD 7	45° 53.835' N	112° 58.923' W
Alder Creek Repeater	CMD 9	45° 34.637' N	113° 15.391' W
Alder Creek Repeater	Maverick Mountain	45° 26.214' N	113° 06.537' W
Alder Creek Repeater	Town Mountain	45° 24.144' N	113° 05.477' W
Alder Creek Value at Risk	Cabin	45° 50.473' N	113° 05.115' W
Alder Creek Value at Risk	Cabin	45° 45.601' N	113° 05.992' W
Alder Creek Drop Point	21	45° 44.313' N	113° 54.265' W
Trail Creek Bridge		45° 42.772' N	113° 52.786' W
Trail Creek Clean Up Area	Chief Joe Pass	45° 41.631' N	113° 56.898' W
Trail Creek Drop Point	40	45° 38.537' N	113° 56.545' W
Trail Creek Drop Point	50	45° 40.868' N	113° 50.051' W
Trail Creek Drop Point	51	45° 41.896' N	113° 54.158' W
Trail Creek Drop Point	52	45° 40.313' N	113° 55.849' W
Trail Creek Drop Point	53	45° 37.381' N	113° 54.358' W
Trail Creek Drop Point	54	45° 37.382' N	113° 53.993' W
Trail Creek Helibase	Sula	45° 49.325' N	113° 57.557' W
Trail Creek Helispot	1	45° 42.848' N	113° 52.553' W
Trail Creek Helispot	2	45° 40.783' N	113° 49.368' W
Trail Creek Helispot	3	45° 39.866' N	113° 49.191' W
Trail Creek Helispot	6	45° 38.544' N	113° 49.410' W
Trail Creek Landing or Log Deck		45° 40.912' N	113° 41.632' W
Trail Creek Landing or Log Deck		45° 40.912' N	113° 41.632' W
Trail Creek Landing or Log Deck		45° 40.912' N	113° 41.632' W
Trail Creek Lookout		45° 41.165' N	113° 45.416' W
Trail Creek Repeater	CMD 8	45° 42.215' N	113° 58.179' W
Trail Creek Repeater	Shen Mountain	45° 37.945' N	113° 56.941' W
Trail Creek Repeater	Tosque Point	45° 55.995' N	113° 44.484' W
Trail Creek Repeater	The Creek	45° 42.540' N	113° 44.322' W
Trail Creek Safety Zone		45° 37.007' N	113° 53.141' W
Trail Creek Strip Site		45° 37.949' N	113° 51.439' W
Trail Creek Unimproved Landing Area		45° 41.034' N	113° 56.149' W
Trail Creek Unimproved Landing Area		45° 39.059' N	113° 46.960' W
Trail Creek Unimproved Landing Area		45° 40.241' N	113° 45.243' W
Trail Creek Unimproved Landing Area		45° 37.287' N	113° 51.439' W
Trail Creek Unimproved Landing Area		45° 41.034' N	113° 56.149' W
Trail Creek Unimproved Landing Area		45° 40.286' N	113° 52.042' W
Trail Creek Value at Risk	Hogan's Cabin	45° 42.804' N	113° 52.831' W
Trail Creek Drop Point	30	45° 38.253' N	113° 40.794' W
Trail Creek Drop Point	31	45° 37.004' N	113° 40.763' W
Trail Creek Drop Point	32	45° 36.323' N	113° 41.098' W

### Flight Restriction Information

Alder Creek - 1/2315 - 12,500ft ceiling  
Trail Creek - 1/2310 - 12,500ft ceiling



SA Blue Team  
7/21/2021 0634  
North American 1983 Datum, LatLong Grid



Fire perimeter updated from  
Acres from IR on 7/18/2021 2105

