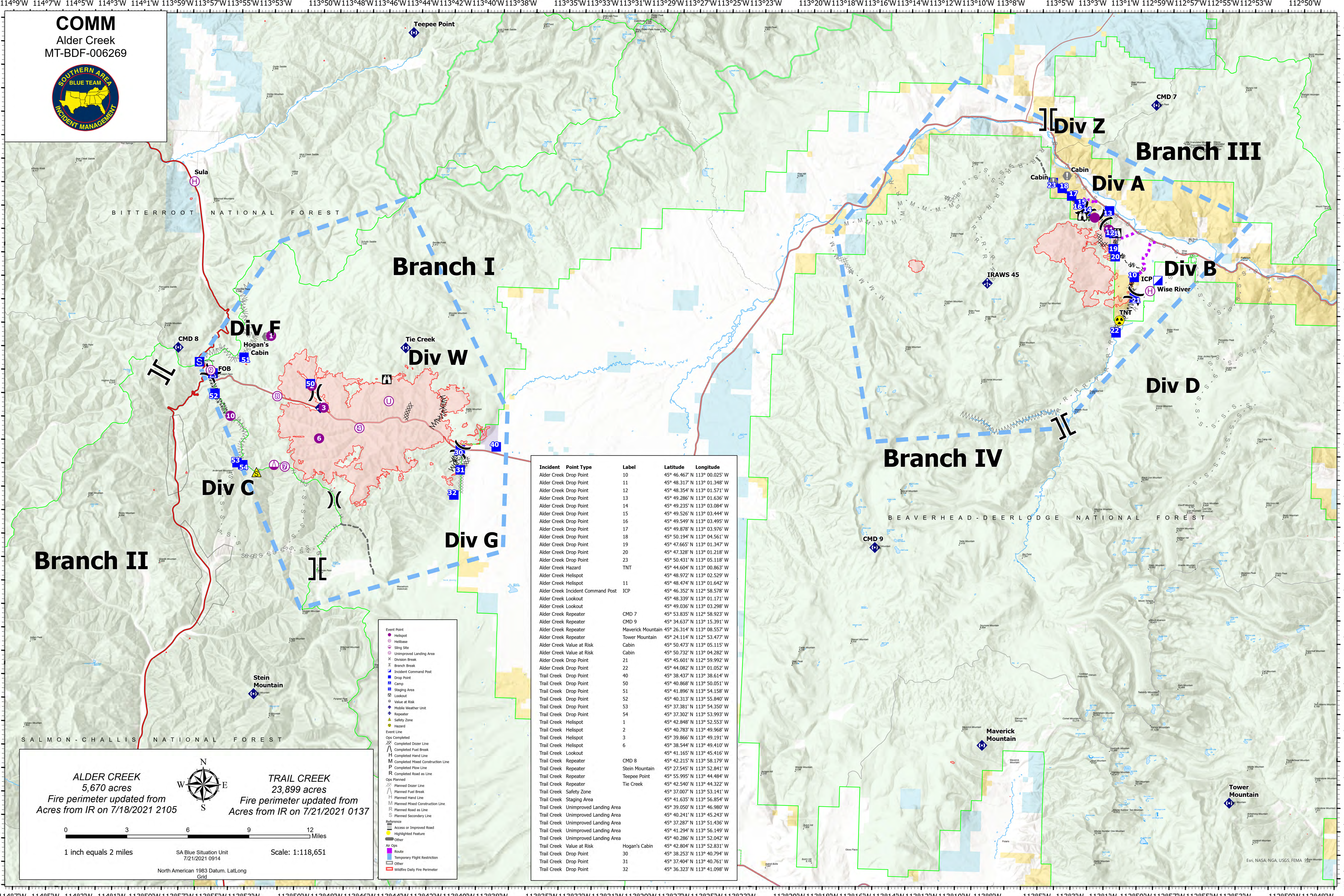


COMM
Alder Creek
MT-BDF-006269



Branch II

Branch I

Branch IV

Branch III

Div C

Div F

Sula

Div W

Tie Creek

Div A

Cabin

Div B

Wise River

Div D

Div G

Stein Mountain

Maverick Mountain

Tower Mountain

ALDER CREEK
5,670 acres
Fire perimeter updated from
Acres from IR on 7/18/2021 2105

TRAIL CREEK
23,899 acres
Fire perimeter updated from
Acres from IR on 7/21/2021 0137



1 inch equals 2 miles

SA Blue Situation Unit
7/21/2021 0914

Scale: 1:118,651

North American 1983 Datum, Lat/Long
Grid

Event Point	● Helispot
● Helibase	○ Sling Site
○ Unimproved Landing Area	X Division Break
II Branch Break	II Incident Command Post
● Drop Point	● Camp
■ Staging Area	□ Lookout
○ Value at Risk	○ Mobile Weather Unit
● Repeater	● Safety Zone
● Hazard	○ Event Line
○ Ops Completed	○ Completed Dozer Line
○ Completed Fuel Break	○ Completed Hand Line
○ Completed Mixed Construction Line	○ Completed Plow Line
○ Completed Road as Line	○ Planned Road as Line
○ Planned Secondary Line	○ Ops Planned
○ Planned Dozer Line	○ Planned Fuel Break
○ Planned Hand Line	○ Planned Mixed Construction Line
○ Planned Road as Line	○ Planned Road as Line
○ Planned Secondary Line	○ Safety Zone
○ Other	○ Other
○ Air Ops	○ Temporary Flight Restriction
○ Other	○ Other
○ Wildlife Daily Fire Perimeter	

Incident	Point Type	Label	Latitude	Longitude
Alder Creek	Drop Point	10	45° 46.467' N	113° 00.025' W
Alder Creek	Drop Point	11	45° 48.317' N	113° 01.348' W
Alder Creek	Drop Point	12	45° 48.354' N	113° 01.571' W
Alder Creek	Drop Point	13	45° 49.286' N	113° 01.636' W
Alder Creek	Drop Point	14	45° 49.235' N	113° 03.084' W
Alder Creek	Drop Point	15	45° 49.526' N	113° 03.444' W
Alder Creek	Drop Point	16	45° 49.549' N	113° 03.495' W
Alder Creek	Drop Point	17	45° 49.878' N	113° 03.976' W
Alder Creek	Drop Point	18	45° 50.194' N	113° 04.561' W
Alder Creek	Drop Point	19	45° 47.665' N	113° 01.347' W
Alder Creek	Drop Point	20	45° 47.328' N	113° 01.218' W
Alder Creek	Drop Point	23	45° 50.431' N	113° 05.118' W
Alder Creek	Hazard	TNT	45° 44.604' N	113° 00.863' W
Alder Creek	Helispot	11	45° 48.972' N	113° 02.529' W
Alder Creek	Helispot	11	45° 48.474' N	113° 01.642' W
Alder Creek	Incident Command Post	ICP	45° 46.352' N	112° 58.578' W
Alder Creek	Lookout		45° 48.339' N	113° 01.171' W
Alder Creek	Lookout		45° 49.036' N	113° 03.298' W
Alder Creek	Repeater	CMD 7	45° 53.835' N	112° 58.923' W
Alder Creek	Repeater	CMD 9	45° 34.637' N	113° 15.391' W
Alder Creek	Repeater	Maverick Mountain	45° 26.314' N	113° 08.557' W
Alder Creek	Repeater	Tower Mountain	45° 24.114' N	112° 53.477' W
Alder Creek	Value at Risk	Cabin	45° 50.473' N	113° 05.115' W
Alder Creek	Value at Risk	Cabin	45° 50.732' N	113° 04.282' W
Alder Creek	Drop Point	21	45° 45.601' N	112° 59.992' W
Alder Creek	Drop Point	22	45° 44.082' N	113° 01.052' W
Trail Creek	Drop Point	40	45° 38.437' N	113° 38.614' W
Trail Creek	Drop Point	50	45° 40.868' N	113° 50.051' W
Trail Creek	Drop Point	51	45° 41.896' N	113° 54.158' W
Trail Creek	Drop Point	52	45° 40.313' N	113° 55.840' W
Trail Creek	Drop Point	53	45° 37.381' N	113° 54.350' W
Trail Creek	Drop Point	54	45° 37.302' N	113° 53.993' W
Trail Creek	Helispot	1	45° 42.848' N	113° 52.553' W
Trail Creek	Helispot	2	45° 40.783' N	113° 49.968' W
Trail Creek	Helispot	3	45° 39.866' N	113° 49.191' W
Trail Creek	Helispot	6	45° 38.544' N	113° 49.410' W
Trail Creek	Lookout		45° 41.165' N	113° 45.416' W
Trail Creek	Repeater	CMD 8	45° 42.215' N	113° 58.179' W
Trail Creek	Repeater	Stein Mountain	45° 27.545' N	113° 52.841' W
Trail Creek	Repeater	Teepee Point	45° 55.995' N	113° 44.484' W
Trail Creek	Repeater	Tie Creek	45° 42.540' N	113° 44.322' W
Trail Creek	Safety Zone		45° 37.007' N	113° 53.141' W
Trail Creek	Staging Area		45° 41.635' N	113° 56.854' W
Trail Creek	Unimproved Landing Area		45° 39.050' N	113° 46.980' W
Trail Creek	Unimproved Landing Area		45° 40.241' N	113° 45.243' W
Trail Creek	Unimproved Landing Area		45° 37.287' N	113° 51.436' W
Trail Creek	Unimproved Landing Area		45° 41.294' N	113° 56.149' W
Trail Creek	Unimproved Landing Area		45° 40.286' N	113° 52.042' W
Trail Creek	Value at Risk	Hogan's Cabin	45° 42.804' N	113° 52.831' W
Trail Creek	Drop Point	30	45° 38.253' N	113° 40.794' W
Trail Creek	Drop Point	31	45° 37.404' N	113° 40.761' W
Trail Creek	Drop Point	32	45° 36.323' N	113° 41.098' W