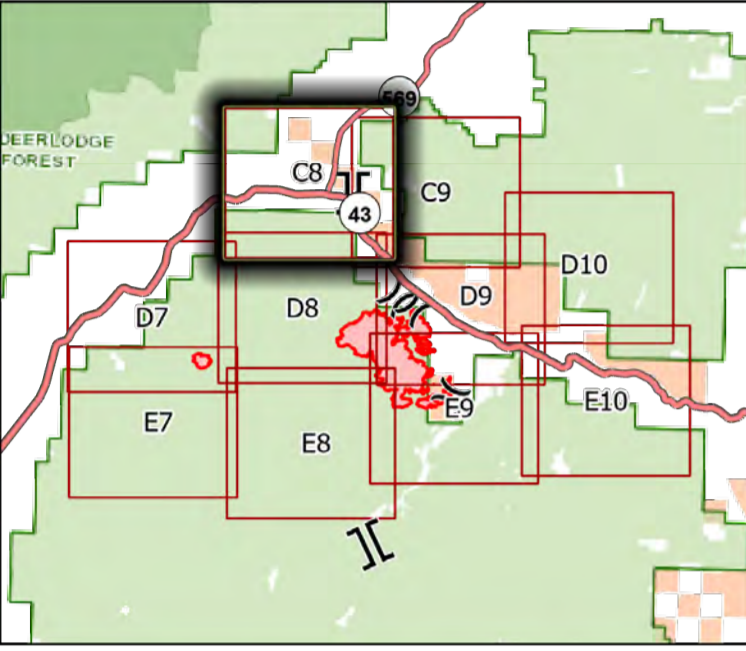


# Division

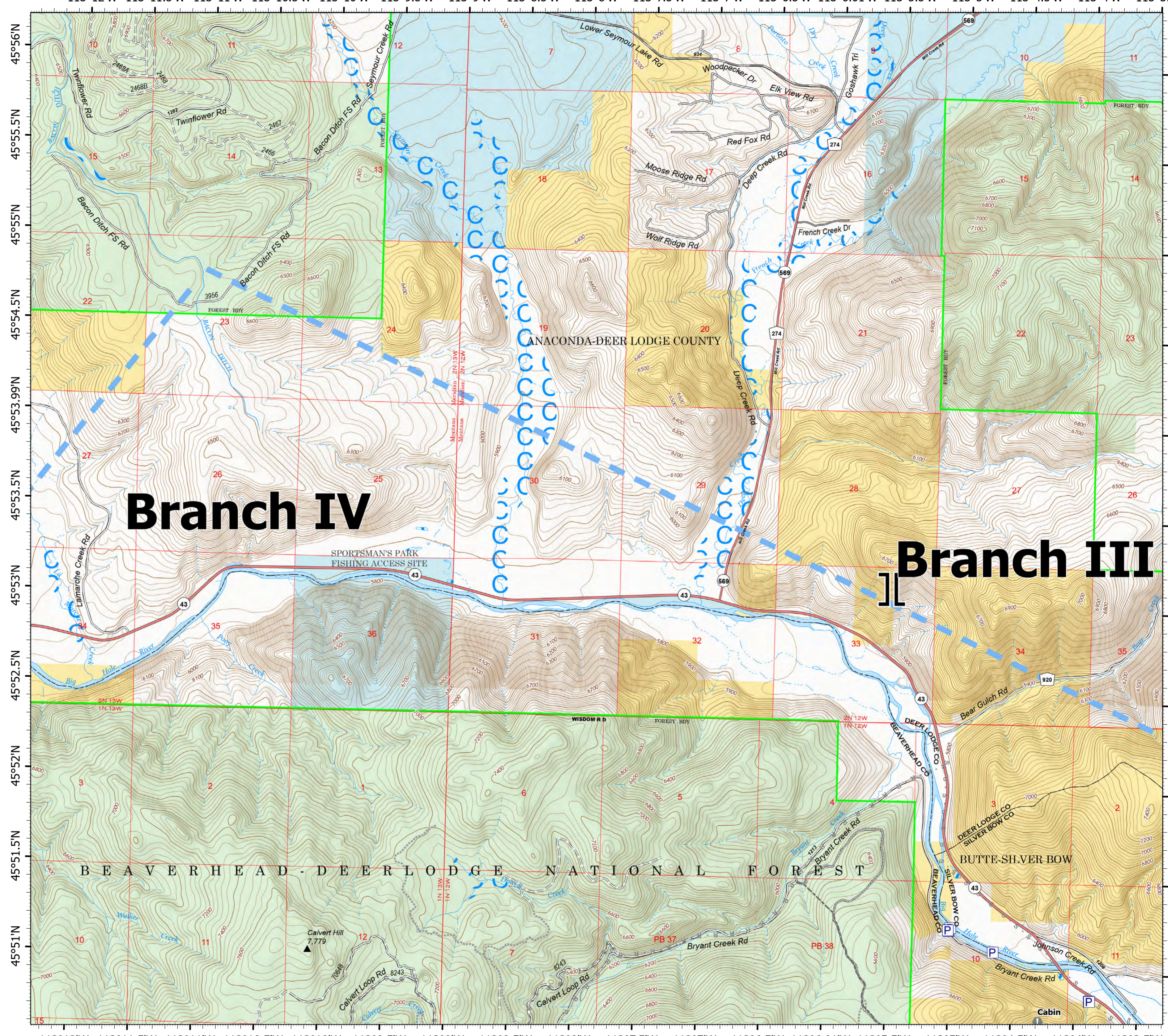
Alder Creek  
MT-BDF-006269  
7/21/2021 Day

5,670 acres at 7/18/2021 2105

# Page C8

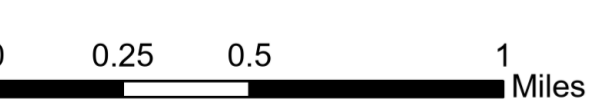


- Pump
- Water Tank
- Branch Break
- Value at Risk
- Planned Road as Line
- Planned Secondary Line
- Other
- Temporary Flight Restriction



## Branch IV

## Branch III



7/21/2021 0614

North American 1983 Datum. Lat/Long Grid

113°12'W 113°11.5'W 113°11'W 113°10.5'W 113°10'W 113°9.5'W 113°9'W 113°8.5'W 113°8'W 113°7.5'W 113°7'W 113°6.5'W 113°6.01'W 113°5.5'W 113°5'W 113°4.5'W 113°4'W 113°3.5'W

45°56'N  
45°55.5'N  
45°55'N  
45°54.5'N  
45°54'N  
45°53.99'N  
45°53.5'N  
45°53'N  
45°52.5'N  
45°52'N  
45°51.5'N  
45°51'N

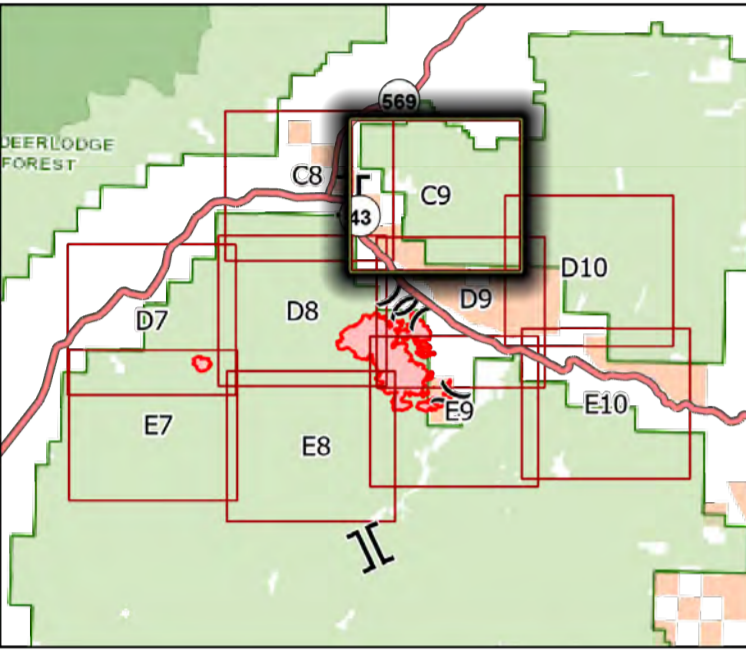
45°56'N  
45°55.5'N  
45°55'N  
45°54.5'N  
45°54'N  
45°53.99'N  
45°53.5'N  
45°53'N  
45°52.5'N  
45°52'N  
45°51.5'N  
45°51'N

# Division

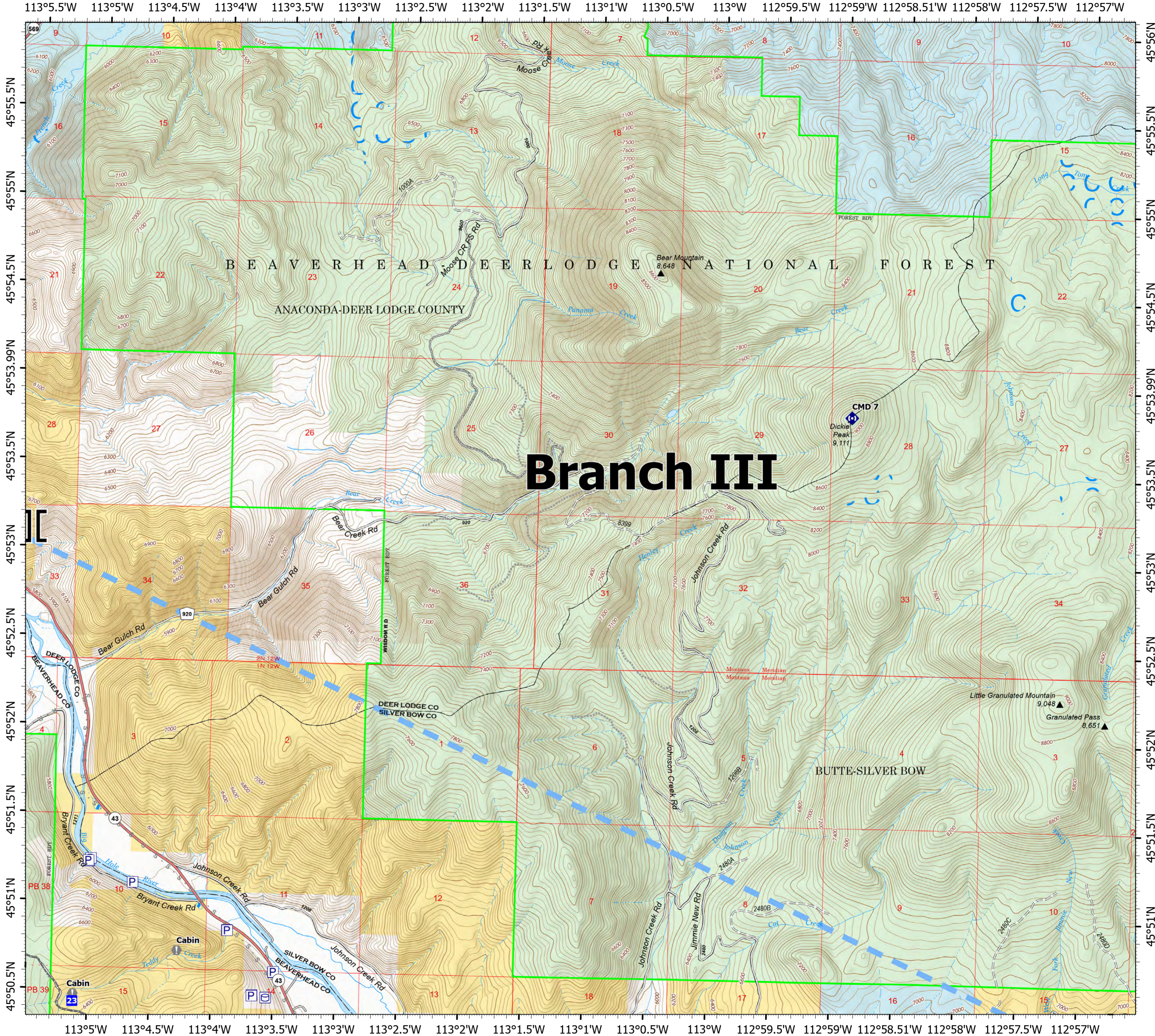
Alder Creek  
MT-BDF-006269  
7/21/2021 Day

5,670 acres at 7/18/2021 2105

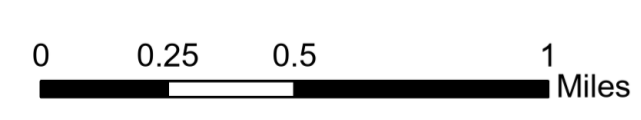
# Page C9



- Pump
- Water Tank
- Branch Break
- Drop Point
- Value at Risk
- Repeater
- Planned Road as Line
- Planned Secondary Line
- Other
- Temporary Flight Restriction



# Branch III



7/21/2021 0614

North American 1983 Datum. Lat/Long Grid

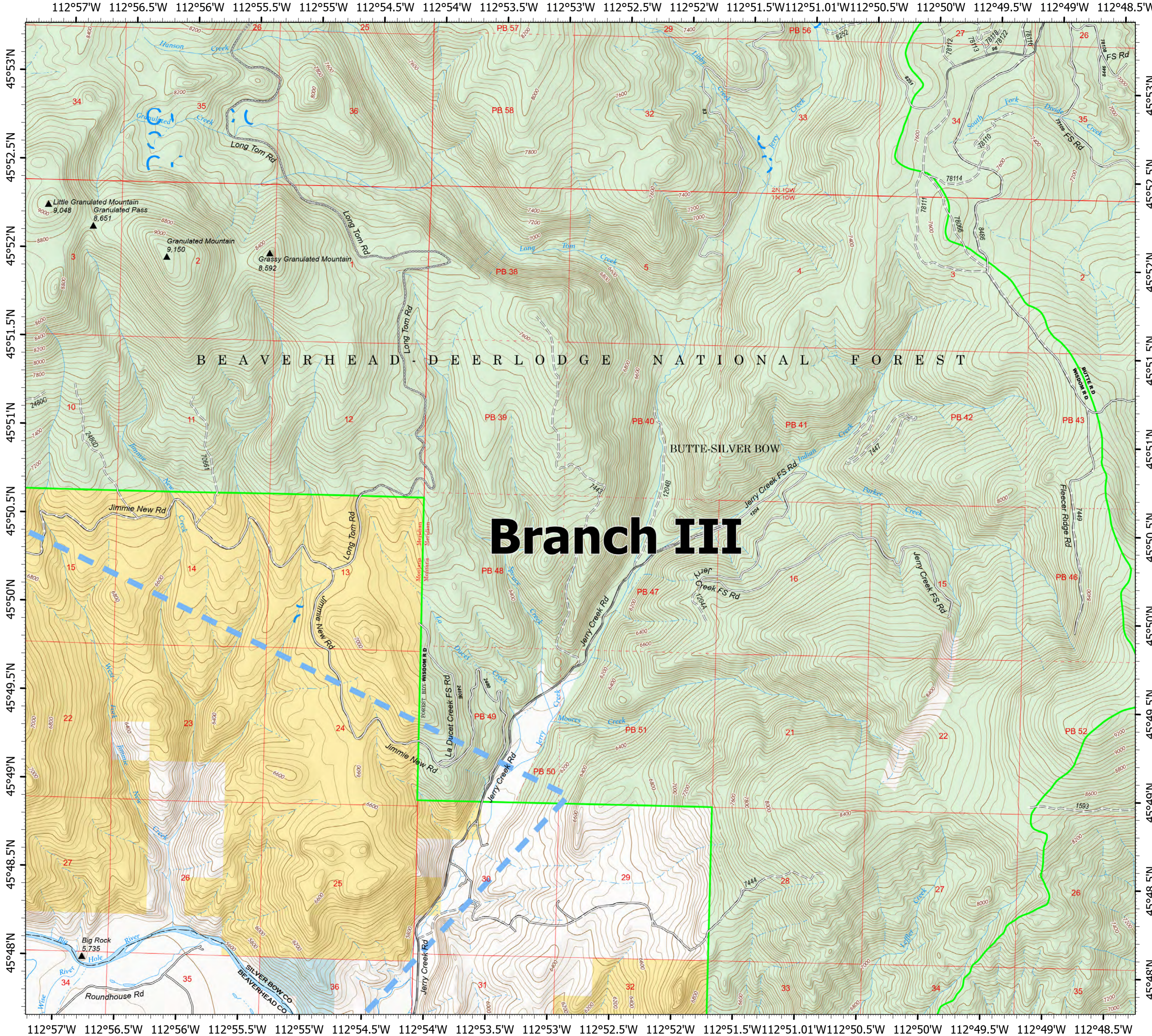
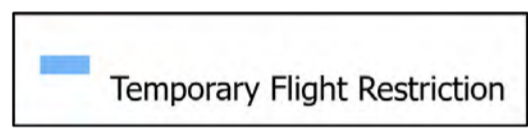
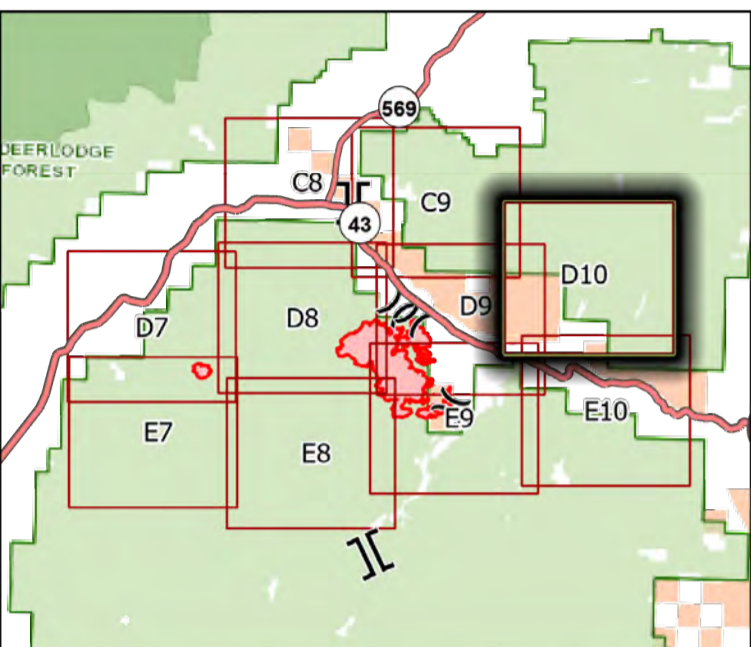
113°5'W 113°4.5'W 113°4'W 113°3.5'W 113°3'W 113°2.5'W 113°2'W 113°1.5'W 113°1'W 113°0.5'W 113°W 112°59.5'W 112°59'W 112°58.51'W 112°58'W 112°57.5'W 112°57'W

# Division

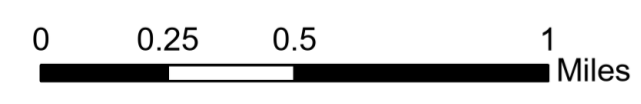
Alder Creek  
MT-BDF-006269  
7/21/2021 Day

5,670 acres at 7/18/2021 2105

# Page D10



# Branch III



7/21/2021 0615

North American 1983 Datum. Lat/Long Grid

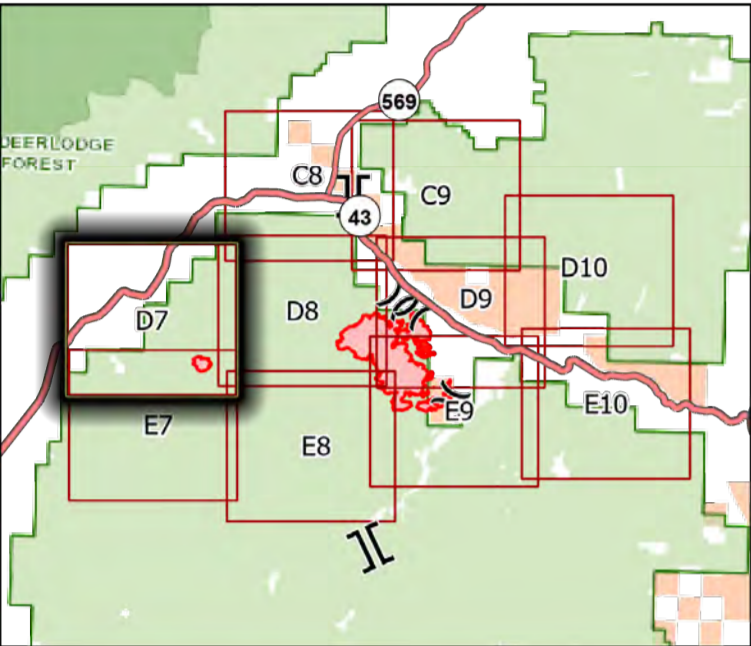
112°57'W 112°56.5'W 112°56'W 112°55.5'W 112°55'W 112°54.5'W 112°54'W 112°53.5'W 112°53'W 112°52.5'W 112°52'W 112°51.5'W 112°51.01'W 112°50.5'W 112°50'W 112°49.5'W 112°49'W 112°48.5'W

# Division

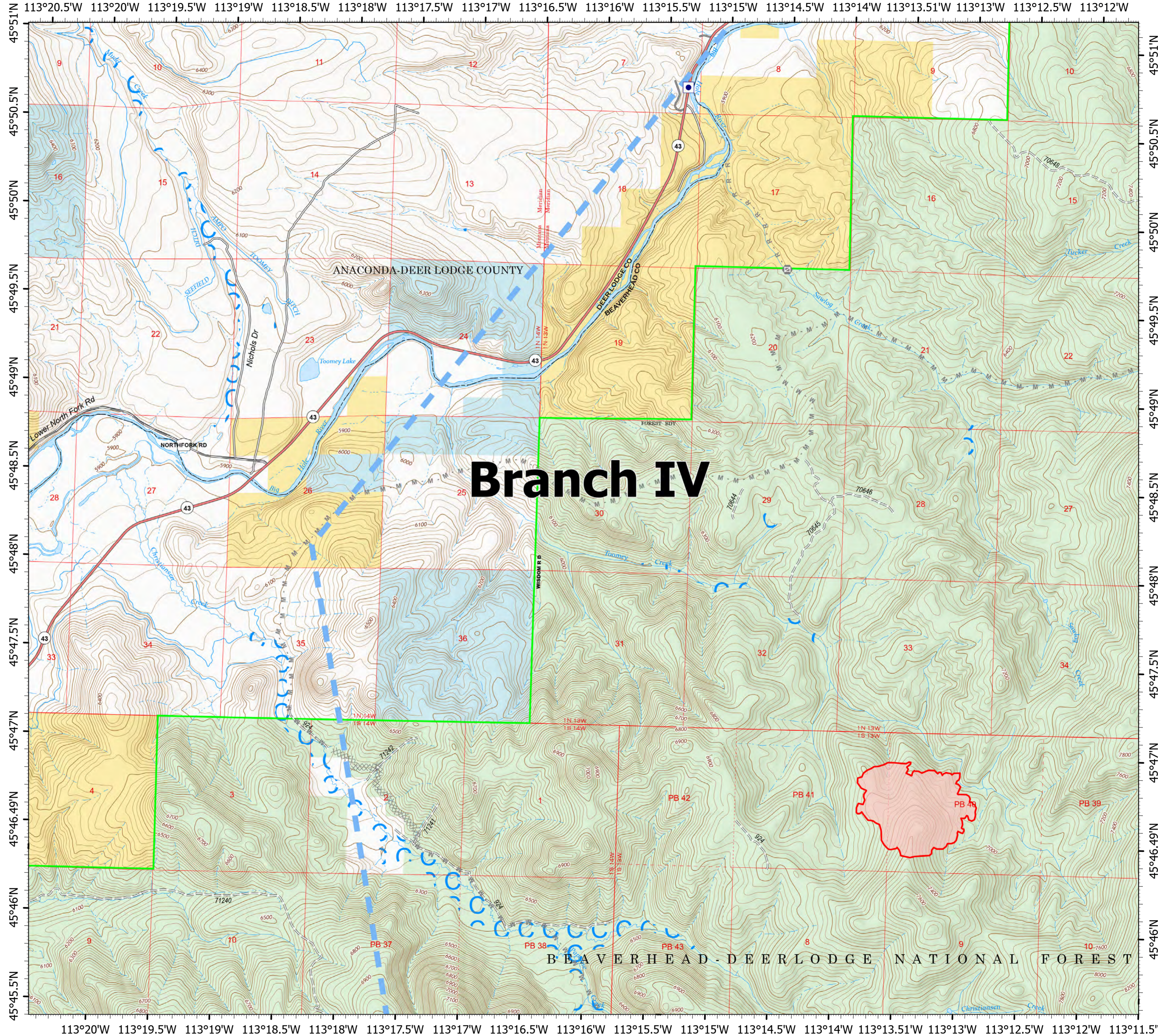
Alder Creek  
MT-BDF-006269  
7/21/2021 Day

5,670 acres at 7/18/2021 2105

# Page D7



- Other Property
- Gate
- Planned Dozer Line
- Planned Mixed Construction Line
- Planned Road as Line
- Temporary Flight Restriction
- Wildfire Daily Fire Perimeter



# Branch IV

0 0.25 0.5 1 Miles



7/21/2021 0615

North American 1983 Datum. Lat/Long Grid

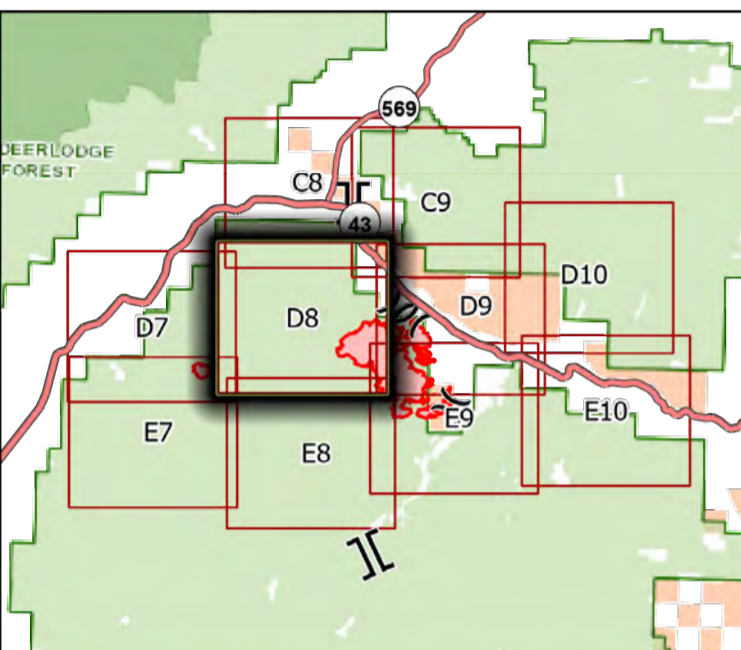
113°20'W 113°19.5'W 113°19'W 113°18.5'W 113°18'W 113°17.5'W 113°17'W 113°16.5'W 113°16'W 113°15.5'W 113°15'W 113°14.5'W 113°14'W 113°13.5'W 113°13'W 113°12.5'W 113°12'W 113°11.5'W

# Division

Alder Creek  
MT-BDF-006269  
7/21/2021 Day

5,670 acres at 7/18/2021 2105

# Page D8



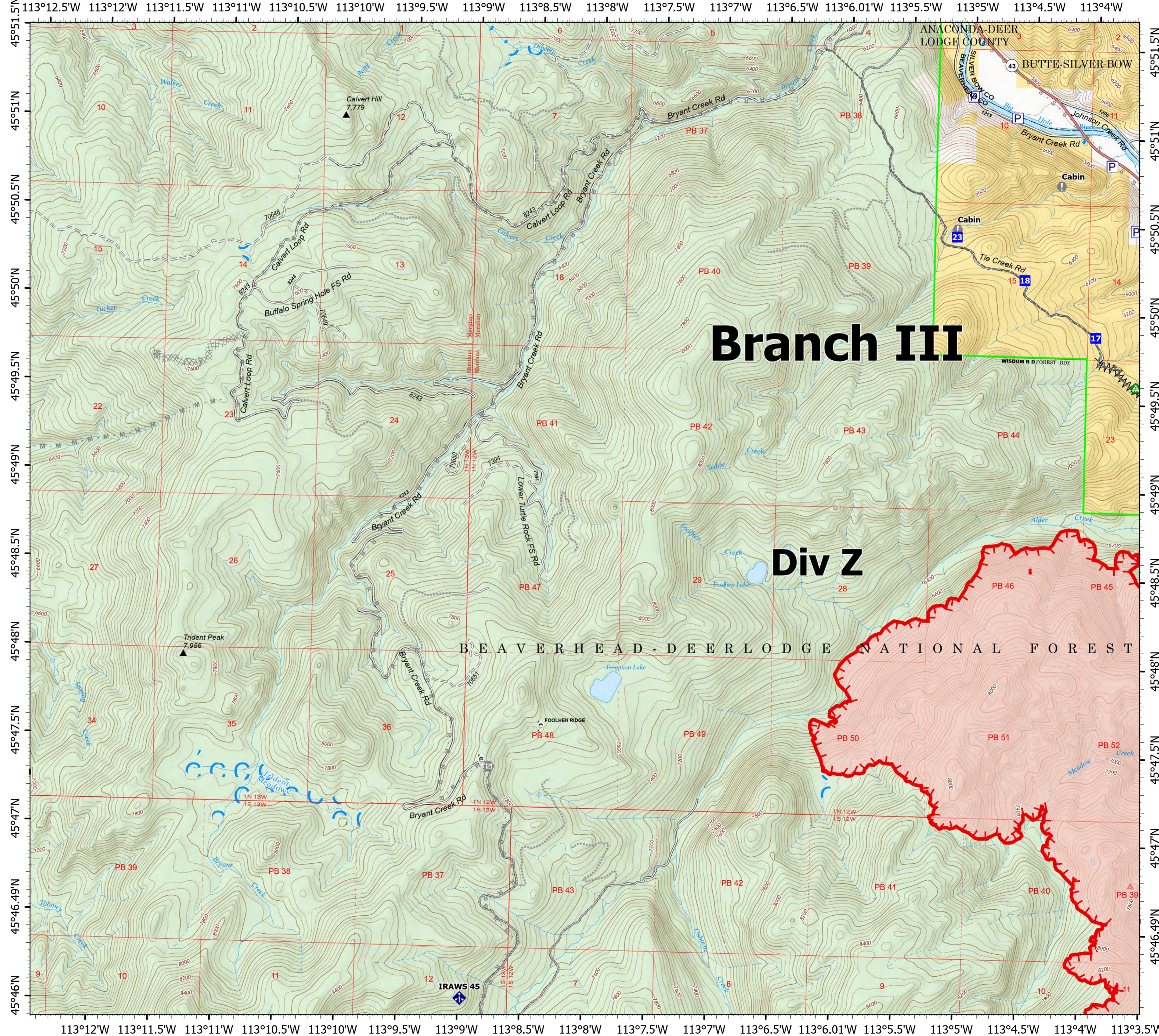
- Pump
- Water Tank
- Drop Point
- Value at Risk
- Gate
- Landing or Log Deck
- Mobile Weather Unit
- Completed Dozer Line
- Completed Fuel Break
- Planned Dozer Line
- Planned Mixed Construction Line
- Planned Road as Line
- Planned Secondary Line
- Other
- Fire Edge
- Wildfire Daily Fire Perimeter

0 0.25 0.5 1 Miles



7/21/2021 0615

North American 1983 Datum. Lat/Long Grid



# Branch III

# Div Z

BEAVERHEAD-DEERLODGE NATIONAL FOREST

ANACONDA-DEER LODGE COUNTY

BUTTE-SILVER BOW

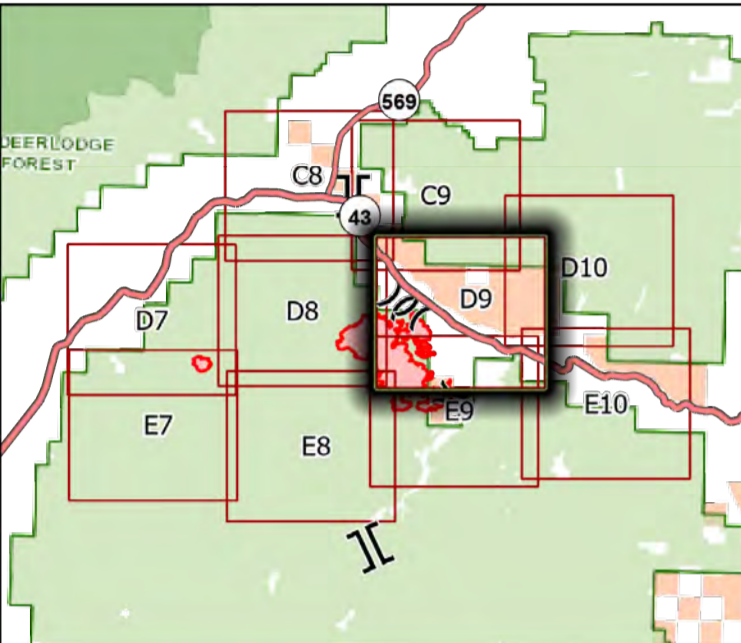
IRAWS 45

# Division

Alder Creek  
MT-BDF-006269  
7/21/2021 Day

5,670 acres at 7/18/2021 2105

# Page D9



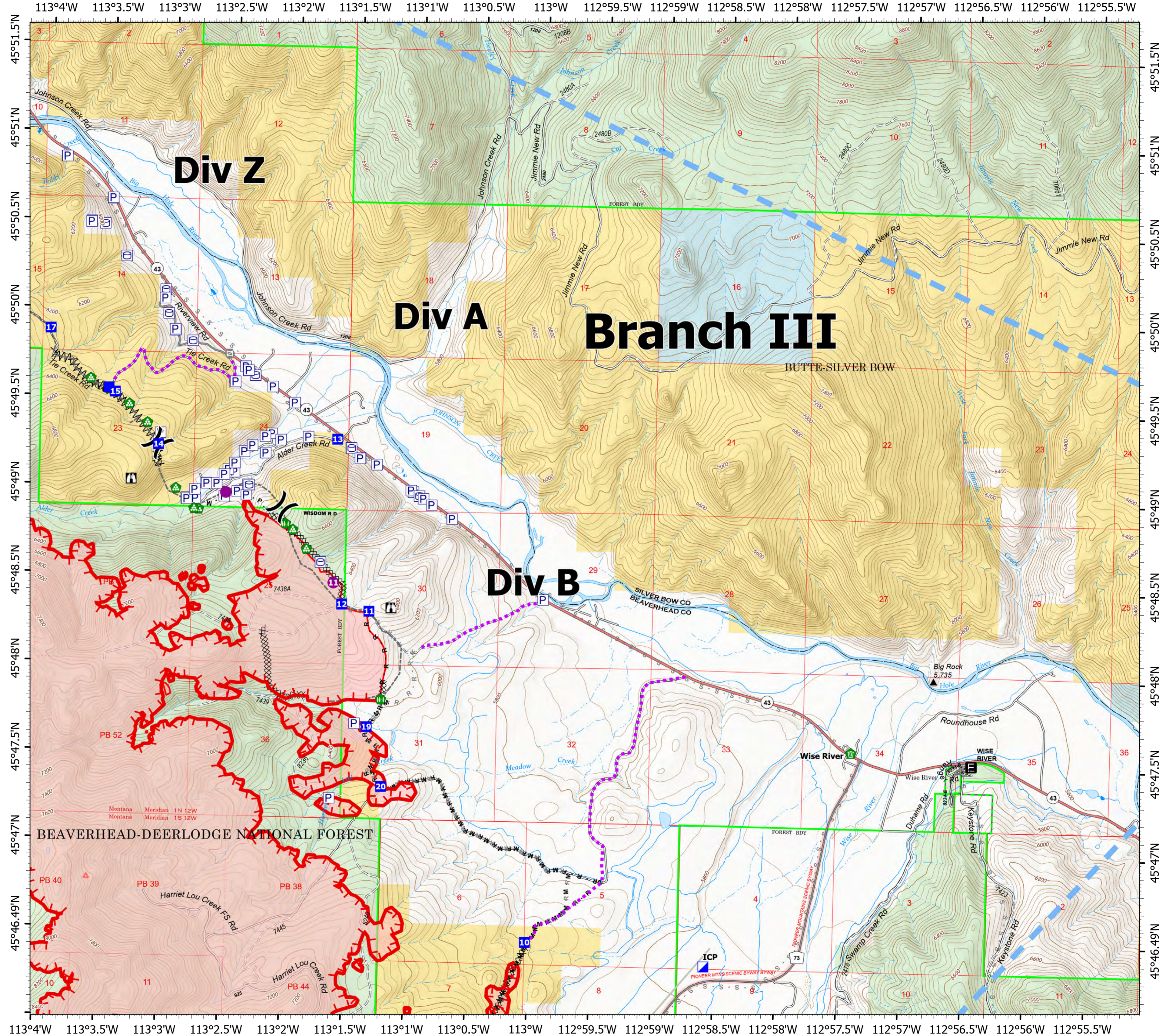
- Pump
- Water Tank
- Helispot
- Division Break
- Incident Command Post
- Drop Point
- Lookout
- Value at Risk
- Gate
- Landing or Log Deck
- Fence - Cut/Damaged
- Clean Up Area
- Completed Dozer Line
- Completed Fuel Break
- Completed Hand Line
- Completed Mixed Construction Line
- Completed Plow Line
- Completed Road as Line
- Planned Road as Line
- Planned Secondary Line
- Other
- Route
- Temporary Flight Restriction
- Fire Edge
- Wildfire Daily Fire Perimeter

0 0.25 0.5 1 Miles



7/21/2021 0616

North American 1983 Datum. Lat/Long Grid



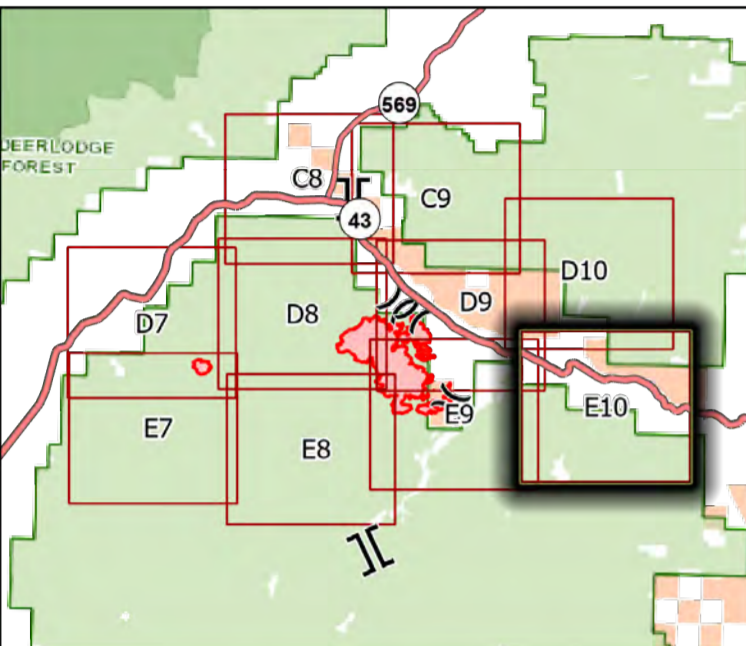
113°4'W 113°3.5'W 113°3'W 113°2.5'W 113°2'W 113°1.5'W 113°1'W 113°0.5'W 113°W 112°59.5'W 112°59'W 112°58.5'W 112°58'W 112°57.5'W 112°57'W 112°56.5'W 112°56'W 112°55.5'W

# Division

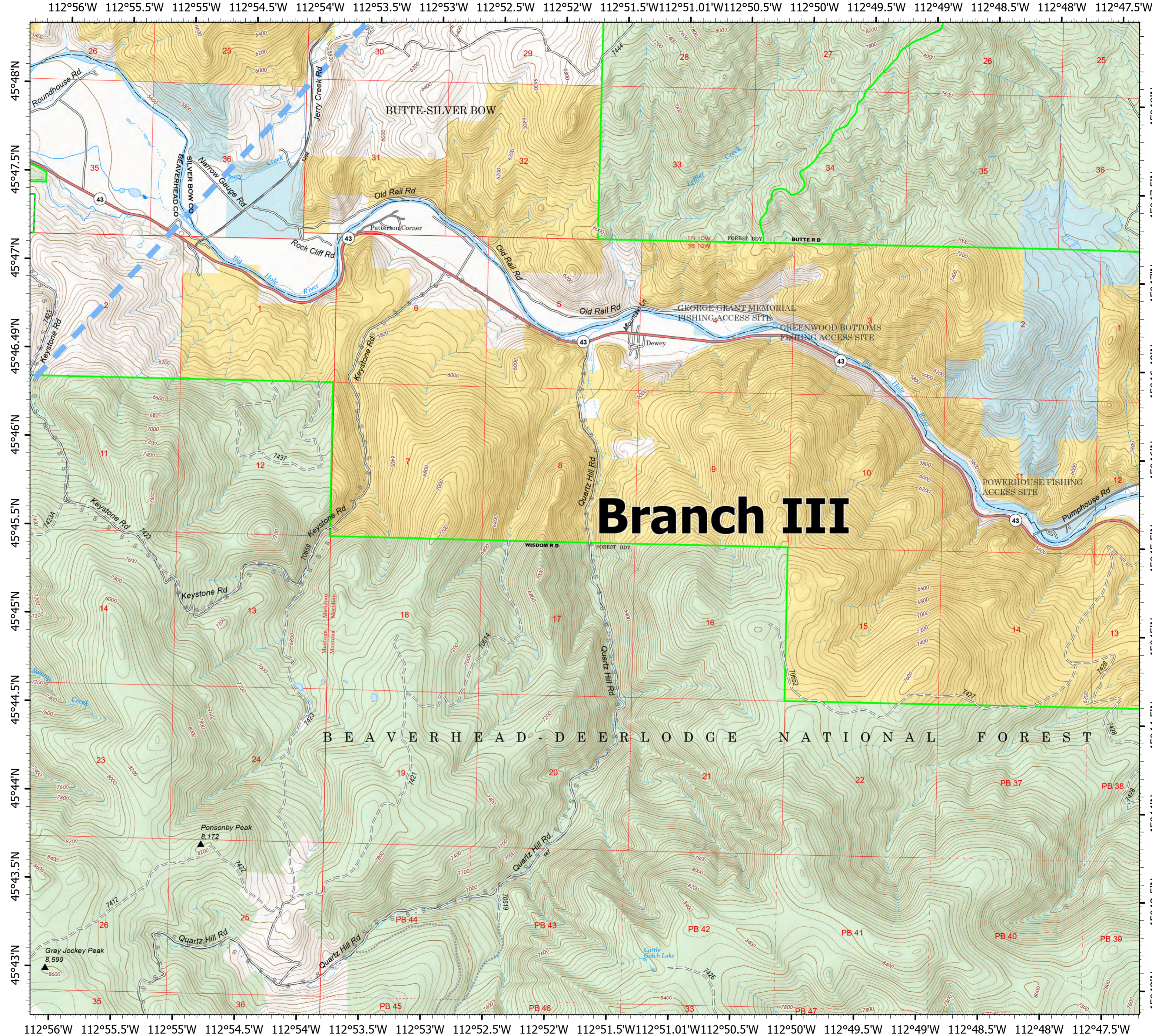
Alder Creek  
MT-BDF-006269  
7/21/2021 Day

5,670 acres at 7/18/2021 2105

# Page E10

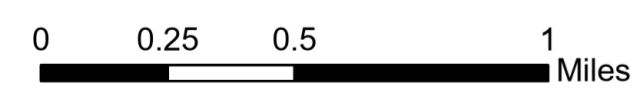


- Planned Secondary Line
- Temporary Flight Restriction



# Branch III

BEAVERHEAD-DEERLODGE NATIONAL FOREST



7/21/2021 0616

North American 1983 Datum. Lat/Long Grid

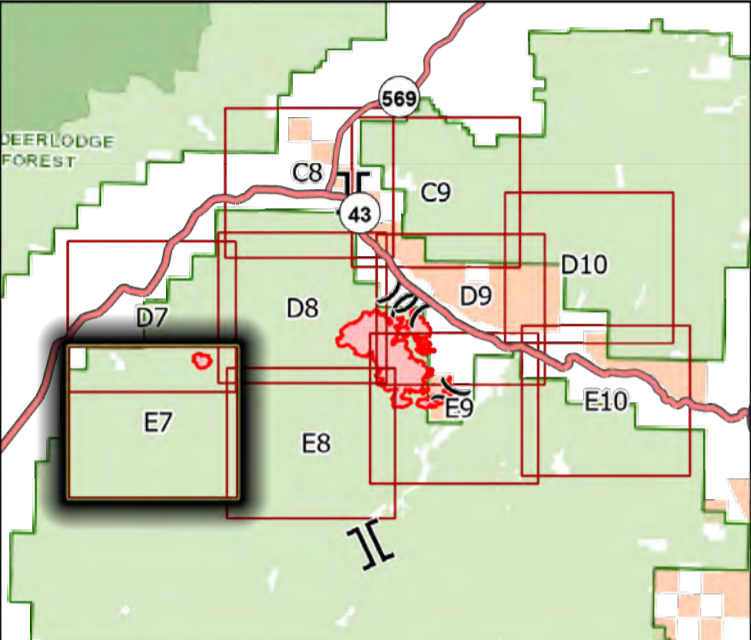
112°56'W 112°55.5'W 112°55'W 112°54.5'W 112°54'W 112°53.5'W 112°53'W 112°52.5'W 112°52'W 112°51.5'W 112°51.01'W 112°50.5'W 112°50'W 112°49.5'W 112°49'W 112°48.5'W 112°48'W 112°47.5'W

# Division

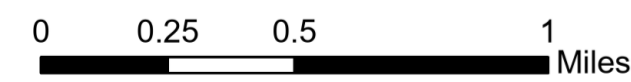
Alder Creek  
MT-BDF-006269  
7/21/2021 Day

5,670 acres at 7/18/2021 2105

# Page E7

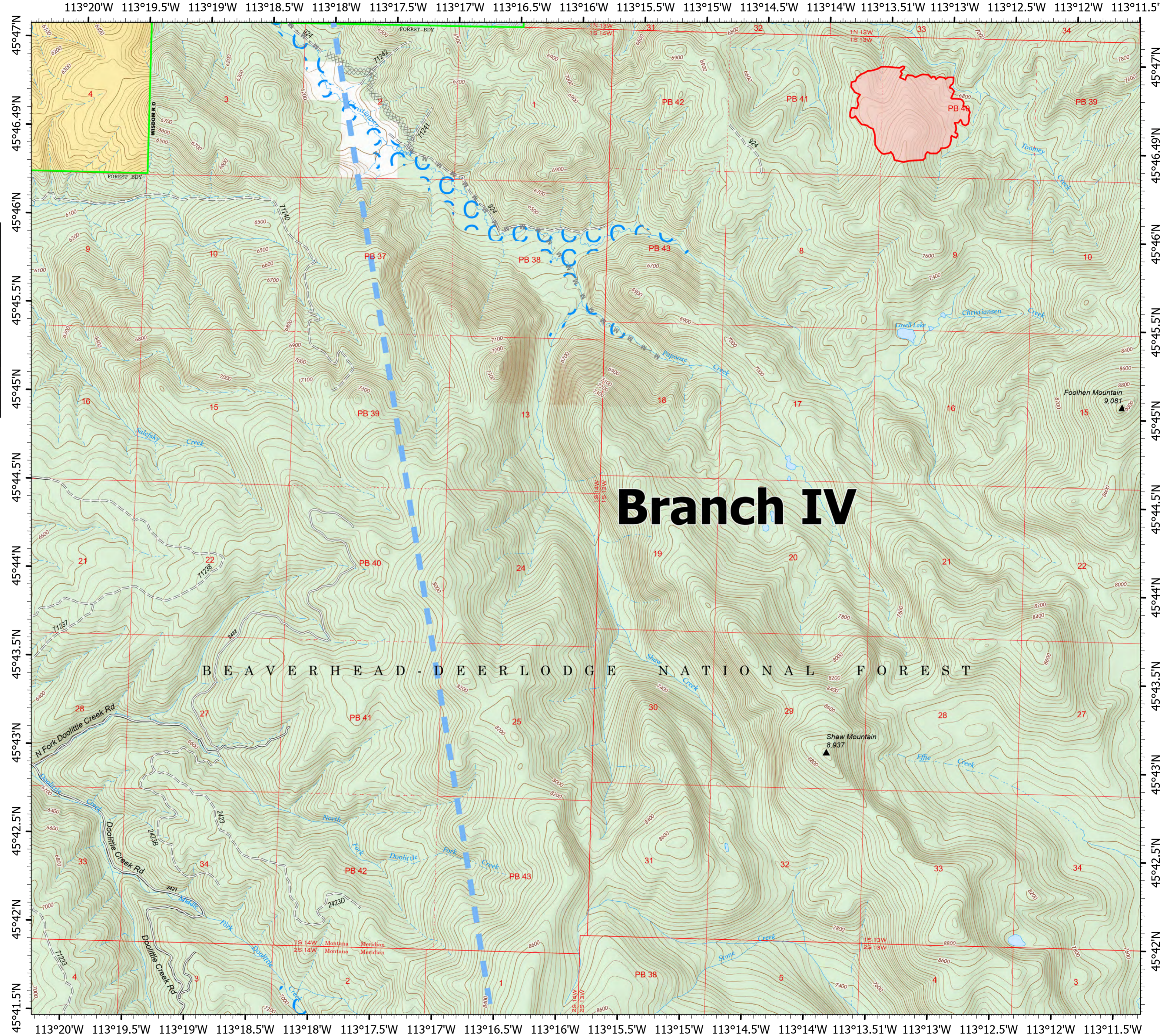


- Planned Dozer Line
- Planned Mixed Construction Line
- Temporary Flight Restriction
- Wildfire Daily Fire Perimeter



7/21/2021 0616

North American 1983 Datum. Lat/Long Grid



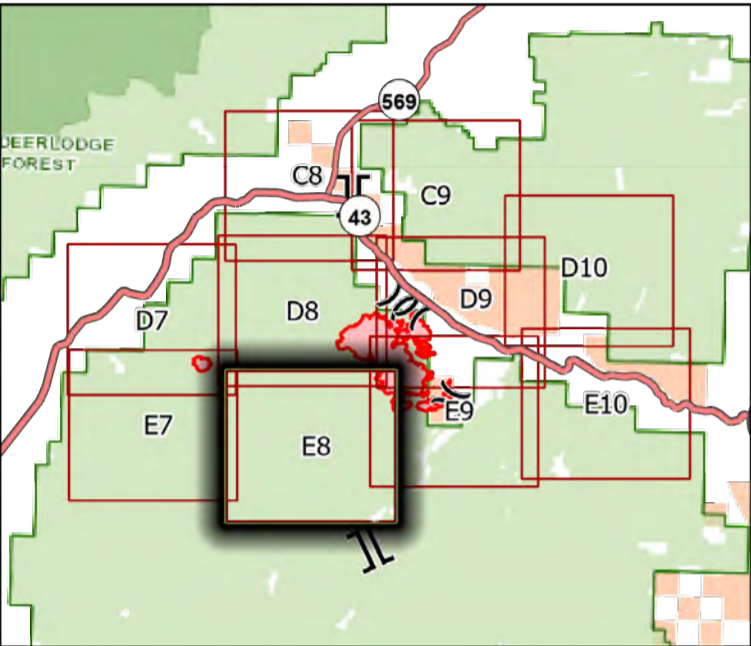


# Division

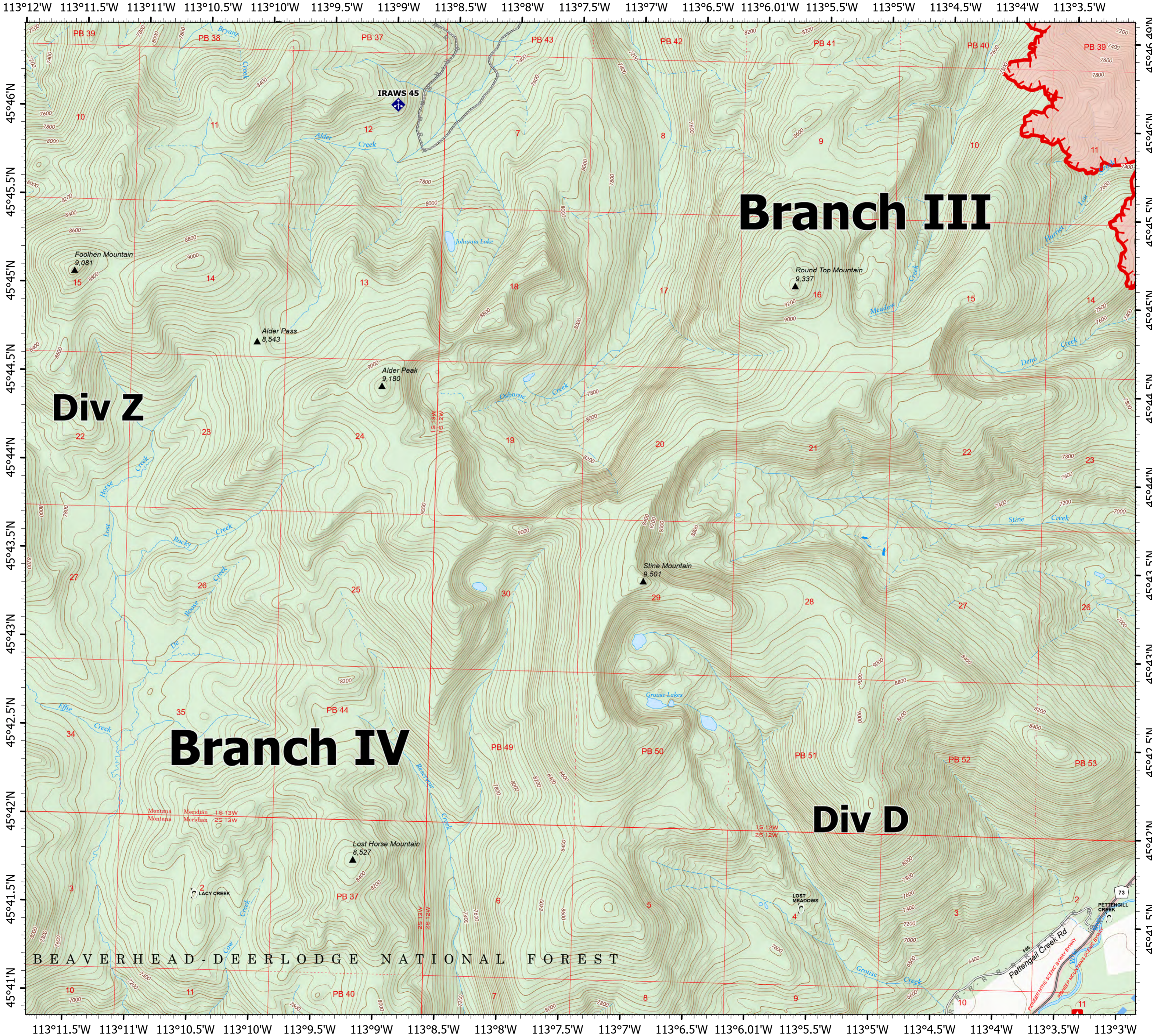
Alder Creek  
MT-BDF-006269  
7/21/2021 Day

5,670 acres at 7/18/2021 2105

# Page E8



- Mobile Weather Unit
- Planned Road as Line
- Temporary Flight Restriction
- Fire Edge
- Wildfire Daily Fire Perimeter



0 0.25 0.5 1 Miles



7/21/2021 0617

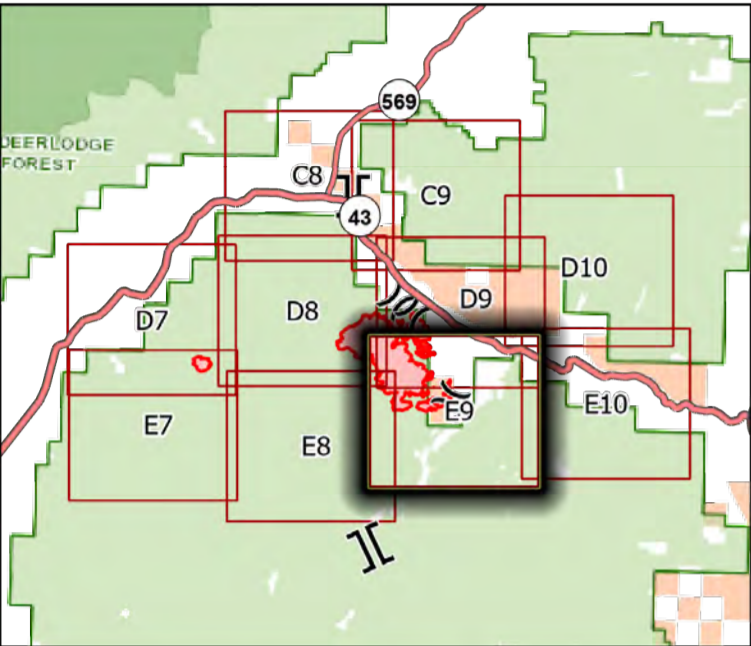
North American 1983 Datum. Lat/Long Grid

# Division

Alder Creek  
MT-BDF-006269  
7/21/2021 Day

5,670 acres at 7/18/2021 2105

# Page E9



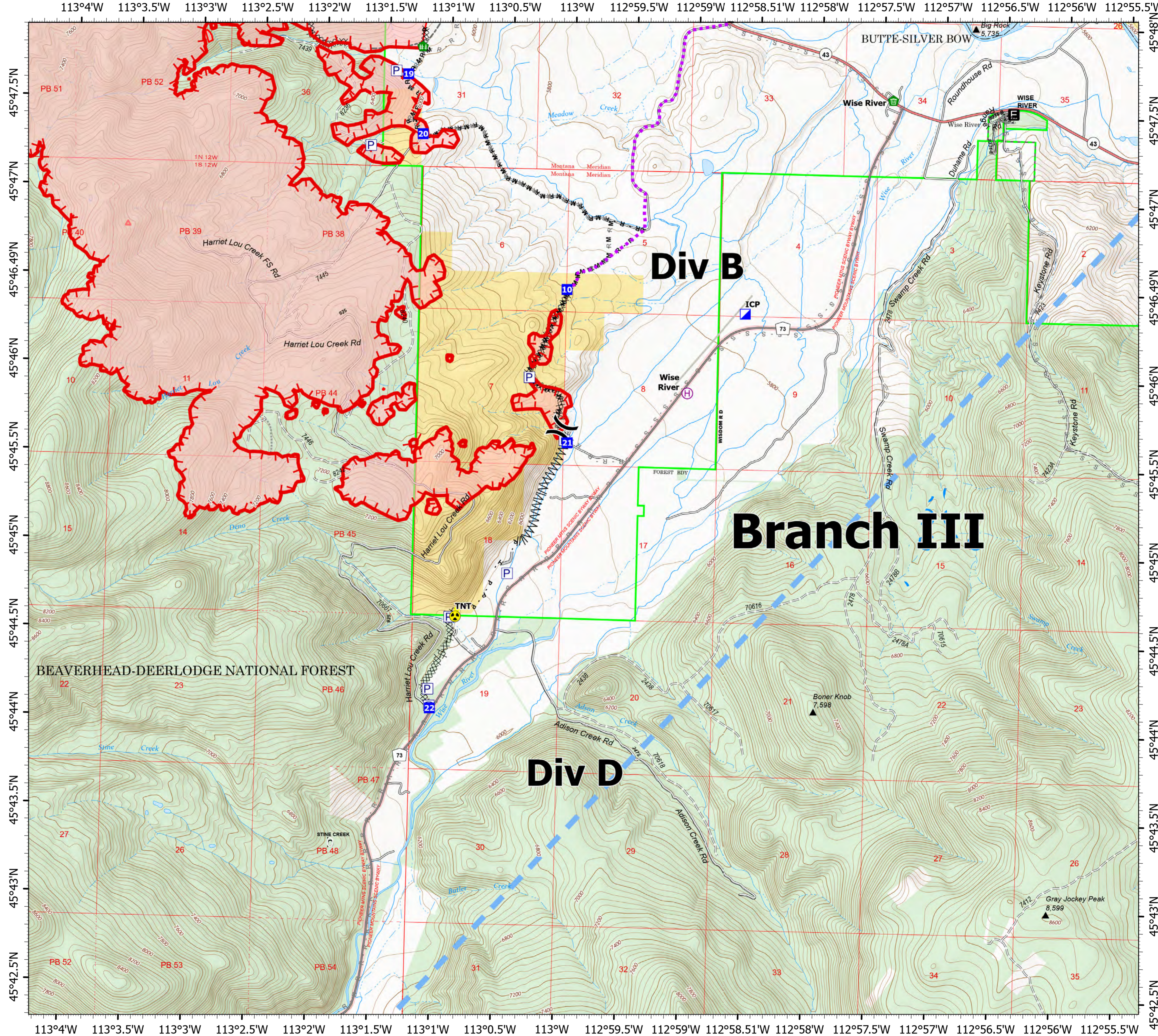
- Pump
- Water Tank
- Helibase
- Division Break
- Incident Command Post
- Drop Point
- Fence - Cut/Damaged
- Clean Up Area
- Hazard
- Completed Dozer Line
- Completed Fuel Break
- Completed Hand Line
- Completed Mixed Construction Line
- Completed Plow Line
- Completed Road as Line
- Planned Road as Line
- Planned Secondary Line
- Access or Improved Road
- Highlighted Feature
- Other
- Route
- Temporary Flight Restriction
- Fire Edge
- Wildfire Daily Fire Perimeter

0 0.25 0.5 1 Miles



7/21/2021 0617

North American 1983 Datum. Lat/Long Grid



BEAVERHEAD-DEERLODGE NATIONAL FOREST

## Div B

## Branch III

## Div D

113°4'W 113°3.5'W 113°3'W 113°2.5'W 113°2'W 113°1.5'W 113°1'W 113°0.5'W 113°W 112°59.5'W 112°59'W 112°58.51'W 112°58'W 112°57.5'W 112°57'W 112°56.5'W 112°56'W 112°55.5'W

45°47.5'N  
45°47'N  
45°46.49'N  
45°46'N  
45°45.5'N  
45°45'N  
45°44.5'N  
45°44'N  
45°43.5'N  
45°43'N  
45°42.5'N

45°48'N  
45°47.5'N  
45°47'N  
45°46.49'N  
45°46'N  
45°45.5'N  
45°45'N  
45°44.5'N  
45°44'N  
45°43.5'N  
45°43'N  
45°42.5'N