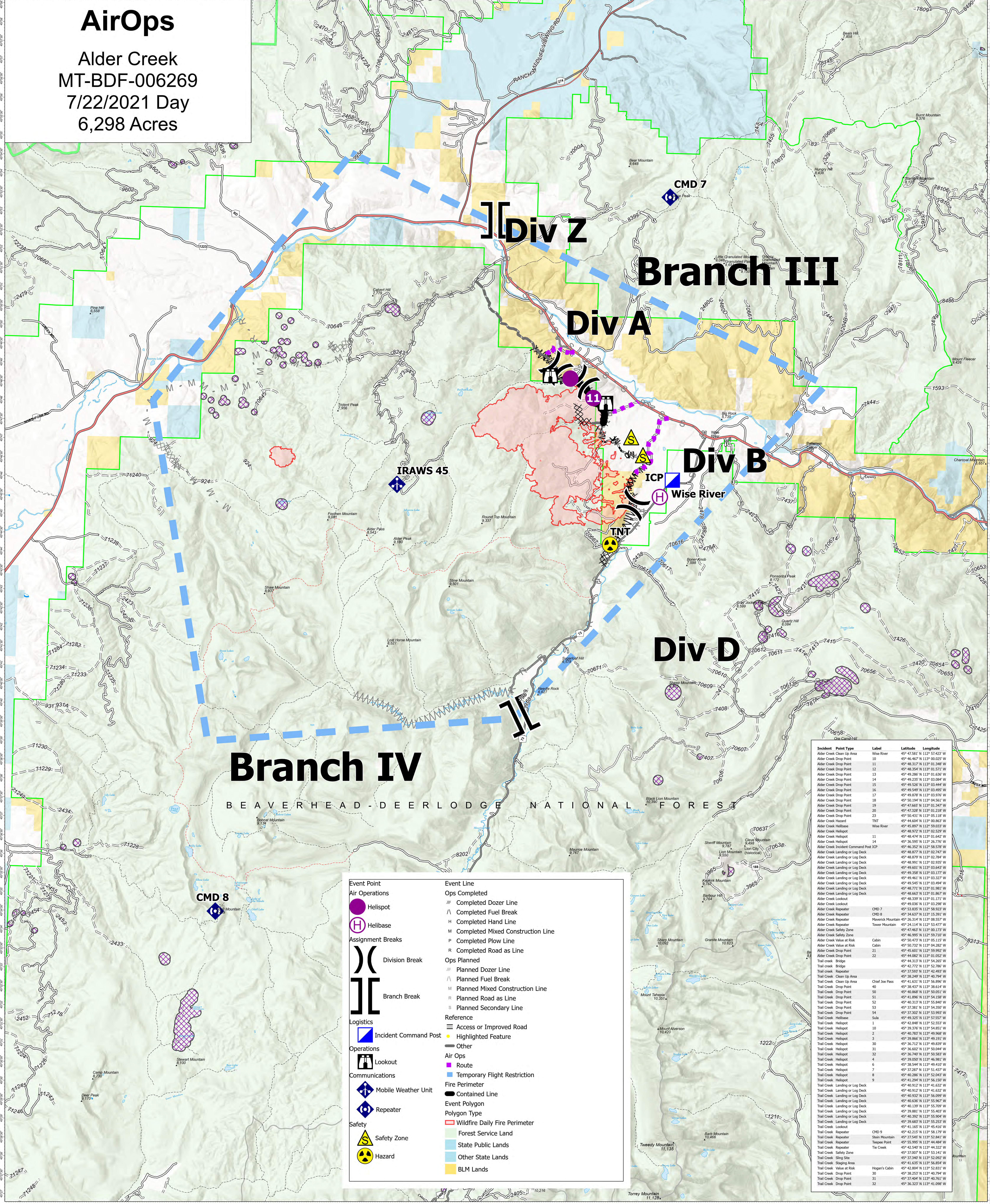


AirOps

Alder Creek
MT-BDF-006269
7/22/2021 Day
6,298 Acres



| Incident Point Type | Label | Latitude | Longitude |
|---------------------------------------|-------------------|---------------|----------------|
| Alder Creek Clean Up Area | Wise River | 45° 47.581' N | 112° 57.423' W |
| Alder Creek Drop Point | 10 | 45° 46.867' N | 112° 00.225' W |
| Alder Creek Drop Point | 11 | 45° 48.317' N | 112° 01.348' W |
| Alder Creek Drop Point | 12 | 45° 48.354' N | 112° 01.571' W |
| Alder Creek Drop Point | 13 | 45° 49.290' N | 112° 01.630' W |
| Alder Creek Drop Point | 14 | 45° 49.237' N | 112° 03.084' W |
| Alder Creek Drop Point | 15 | 45° 49.526' N | 112° 03.444' W |
| Alder Creek Drop Point | 16 | 45° 49.549' N | 112° 03.495' W |
| Alder Creek Drop Point | 17 | 45° 49.276' N | 112° 03.702' W |
| Alder Creek Drop Point | 18 | 45° 50.194' N | 112° 04.561' W |
| Alder Creek Drop Point | 19 | 45° 47.665' N | 112° 01.347' W |
| Alder Creek Drop Point | 20 | 45° 47.232' N | 112° 01.218' W |
| Alder Creek Drop Point | 23 | 45° 50.431' N | 112° 05.118' W |
| Alder Creek Hazard | Wise River | 45° 46.607' N | 112° 00.863' W |
| Alder Creek Helibase | Wise River | 45° 45.897' N | 112° 59.023' W |
| Alder Creek Helispot | | 45° 48.972' N | 112° 02.529' W |
| Alder Creek Helispot | | 45° 48.474' N | 112° 01.642' W |
| Alder Creek Helispot | | 45° 46.267' N | 112° 02.702' W |
| Alder Creek Incident Command Post ICP | | 45° 46.352' N | 112° 58.576' W |
| Alder Creek Landing or Log Deck | | 45° 48.877' N | 112° 02.747' W |
| Alder Creek Landing or Log Deck | | 45° 48.879' N | 112° 02.794' W |
| Alder Creek Landing or Log Deck | | 45° 48.991' N | 112° 02.935' W |
| Alder Creek Landing or Log Deck | | 45° 49.601' N | 112° 03.643' W |
| Alder Creek Landing or Log Deck | | 45° 49.258' N | 112° 03.177' W |
| Alder Creek Landing or Log Deck | | 45° 49.421' N | 112° 03.327' W |
| Alder Creek Landing or Log Deck | | 45° 49.545' N | 112° 03.494' W |
| Alder Creek Landing or Log Deck | | 45° 48.771' N | 112° 01.981' W |
| Alder Creek Landing or Log Deck | | 45° 48.656' N | 112° 01.807' W |
| Alder Creek Lookout | | 45° 48.339' N | 112° 01.171' W |
| Alder Creek Lookout | | 45° 49.258' N | 112° 03.298' W |
| Alder Creek Repeater | CMD 7 | 45° 53.376' N | 112° 58.823' W |
| Alder Creek Repeater | CMD 8 | 45° 34.637' N | 112° 15.391' W |
| Alder Creek Repeater | Maverick Mountain | 45° 26.314' N | 112° 08.557' W |
| Alder Creek Repeater | Tower Mountain | 45° 24.114' N | 112° 53.077' W |
| Alder Creek Safety Zone | | 45° 47.463' N | 112° 00.173' W |
| Alder Creek Safety Zone | | 45° 46.995' N | 112° 59.710' W |
| Alder Creek Value at Risk | Cabin | 45° 50.778' N | 112° 05.117' W |
| Alder Creek Value at Risk | Cabin | 45° 50.732' N | 112° 04.282' W |
| Alder Creek Drop Point | 21 | 45° 45.601' N | 112° 59.992' W |
| Alder Creek Drop Point | 22 | 45° 44.682' N | 112° 01.052' W |
| Trail Creek Bridge | | 45° 44.317' N | 112° 54.203' W |
| Trail Creek Bridge | | 45° 42.772' N | 112° 52.780' W |
| Trail Creek Repeater | | 45° 37.593' N | 112° 42.403' W |
| Trail Creek Clean Up Area | | 45° 38.266' N | 112° 40.294' W |
| Trail Creek Clean Up Area | Chief Joe Pass | 45° 41.631' N | 112° 56.896' W |
| Trail Creek Drop Point | 40 | 45° 38.437' N | 112° 38.614' W |
| Trail Creek Drop Point | 50 | 45° 40.868' N | 112° 50.615' W |
| Trail Creek Drop Point | 51 | 45° 41.896' N | 112° 54.158' W |
| Trail Creek Drop Point | 52 | 45° 40.311' N | 112° 55.849' W |
| Trail Creek Drop Point | 53 | 45° 37.331' N | 112° 54.502' W |
| Trail Creek Drop Point | 54 | 45° 37.302' N | 112° 53.993' W |
| Trail Creek Helibase | Sula | 45° 49.325' N | 112° 57.557' W |
| Trail Creek Helispot | 1 | 45° 42.848' N | 112° 52.523' W |
| Trail Creek Helispot | 10 | 45° 39.376' N | 112° 54.851' W |
| Trail Creek Helispot | 2 | 45° 40.283' N | 112° 49.968' W |
| Trail Creek Helispot | 3 | 45° 39.866' N | 112° 49.191' W |
| Trail Creek Helispot | 30 | 45° 36.117' N | 112° 49.837' W |
| Trail Creek Helispot | 31 | 45° 36.602' N | 112° 50.044' W |
| Trail Creek Helispot | 32 | 45° 36.740' N | 112° 50.583' W |
| Trail Creek Helispot | 4 | 45° 39.027' N | 112° 46.981' W |
| Trail Creek Helispot | 6 | 45° 38.544' N | 112° 49.410' W |
| Trail Creek Helispot | 7 | 45° 37.287' N | 112° 51.437' W |
| Trail Creek Helispot | 8 | 45° 40.267' N | 112° 52.045' W |
| Trail Creek Helispot | 9 | 45° 41.294' N | 112° 56.107' W |
| Trail Creek Landing or Log Deck | | 45° 40.912' N | 112° 41.632' W |
| Trail Creek Landing or Log Deck | | 45° 40.912' N | 112° 41.632' W |
| Trail Creek Landing or Log Deck | | 45° 40.932' N | 112° 56.099' W |
| Trail Creek Landing or Log Deck | | 45° 40.636' N | 112° 55.967' W |
| Trail Creek Landing or Log Deck | | 45° 40.139' N | 112° 55.700' W |
| Trail Creek Landing or Log Deck | | 45° 39.881' N | 112° 55.403' W |
| Trail Creek Landing or Log Deck | | 45° 40.320' N | 112° 55.904' W |
| Trail Creek Landing or Log Deck | | 45° 39.848' N | 112° 55.530' W |
| Trail Creek Lookout | | 45° 41.160' N | 112° 45.610' W |
| Trail Creek Repeater | CMD 9 | 45° 42.215' N | 112° 58.179' W |
| Trail Creek Repeater | Stain Mountain | 45° 27.945' N | 112° 52.841' W |
| Trail Creek Repeater | Townsend Point | 45° 55.976' N | 112° 44.841' W |
| Trail Creek Repeater | Tie Creek | 45° 42.540' N | 112° 44.322' W |
| Trail Creek Safety Zone | | 45° 37.007' N | 112° 53.141' W |
| Trail Creek Staging Area | | 45° 37.320' N | 112° 52.002' W |
| Trail Creek Staging Area | | 45° 41.635' N | 112° 56.854' W |
| Trail Creek Value at Risk | Hogan's Cabin | 45° 42.804' N | 112° 52.813' W |
| Trail Creek Drop Point | 30 | 45° 38.257' N | 112° 40.294' W |
| Trail Creek Drop Point | 31 | 45° 37.494' N | 112° 40.761' W |
| Trail Creek Drop Point | 32 | 45° 36.327' N | 112° 41.098' W |

| | |
|-----------------------|-----------------------------------|
| Event Point | Event Line |
| Air Operations | Ops Completed |
| Helispot | Completed Dozer Line |
| Helibase | Completed Fuel Break |
| Assignment Breaks | Completed Hand Line |
| Division Break | Completed Mixed Construction Line |
| Branch Break | Completed Plow Line |
| | Completed Road as Line |
| Logistics | Ops Planned |
| Incident Command Post | Planned Dozer Line |
| Operations | Planned Fuel Break |
| Lookout | Planned Mixed Construction Line |
| Communications | Planned Road as Line |
| Mobile Weather Unit | Planned Secondary Line |
| Repeater | Reference |
| Safety | Access or Improved Road |
| | Highlighted Feature |
| | Other |
| | Air Ops |
| | Route |
| | Temporary Flight Restriction |
| | Fire Perimeter |
| | Contained Line |
| | Event Polygon |
| | Polygon Type |
| | Wildfire Daily Fire Perimeter |
| | Forest Service Land |
| | State Public Lands |
| | Other State Lands |
| | BLM Lands |

Flight Restriction Information

Alder Creek - 1/2315 - 12,500ft ceiling
Trail Creek - 1/2310 - 12,500ft ceiling



SA Blue Team
7/22/2021 0829
North American 1983 Datum. LatLong Grid

Fire perimeter updated from Acres from IR on 7/22/2021 0005

Scale: 1:54,688
1 inch equals 1 mile