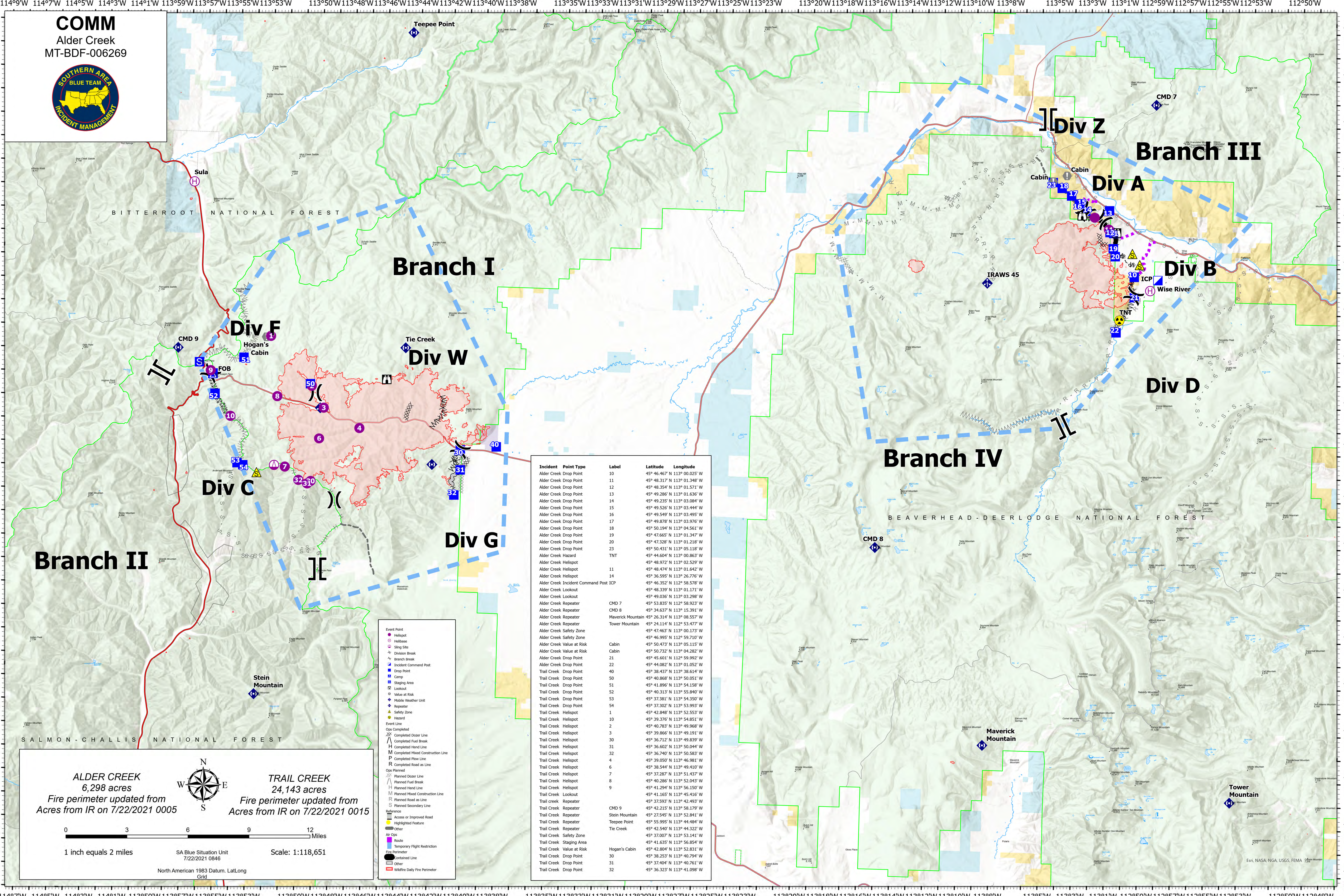


COMM
Alder Creek
MT-BDF-006269



Branch II

Branch I

Branch IV

Branch III

Div C

Div F

Div W

Div A

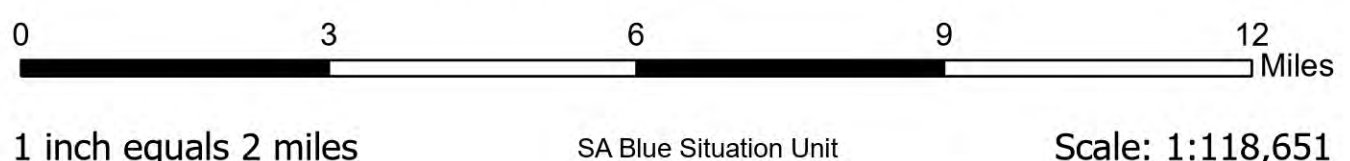
Div B

Div G

Div D

ALDER CREEK
6,298 acres
Fire perimeter updated from
Acres from IR on 7/22/2021 0005

TRAIL CREEK
24,143 acres
Fire perimeter updated from
Acres from IR on 7/22/2021 0015



- Event Point
- Helipoint
- Helibase
- Sting Site
- Division Break
- Branch Break
- Incident Command Post
- Drop Point
- Camp
- Staging Area
- Lookout
- Value at Risk
- Mobile Weather Unit
- Repeater
- Safety Zone
- Hazard
- Event Line
- Ops Completed
- Completed Dozer Line
- Completed Fuel Break
- Completed Hand Line
- Completed Mixed Construction Line
- Completed Flow Line
- Completed Road as Line
- Planned Dozer Line
- Planned Fuel Break
- Planned Hand Line
- Planned Mixed Construction Line
- Planned Road as Line
- Planned Secondary Line
- Reference
- Access or Improved Road
- Highlighted Feature
- Other
- Ar Ops
- Route
- Temporary Flight Restriction
- Fire Perimeter
- Contained Line
- Other
- Wildfire Daily Fire Perimeter

Incident Point Type	Label	Latitude	Longitude
Alder Creek Drop Point	10	45° 46.467' N 113° 00.025' W	
Alder Creek Drop Point	11	45° 48.317' N 113° 01.348' W	
Alder Creek Drop Point	12	45° 48.354' N 113° 01.571' W	
Alder Creek Drop Point	13	45° 49.286' N 113° 01.636' W	
Alder Creek Drop Point	14	45° 49.235' N 113° 03.084' W	
Alder Creek Drop Point	15	45° 49.526' N 113° 03.444' W	
Alder Creek Drop Point	16	45° 49.549' N 113° 03.495' W	
Alder Creek Drop Point	17	45° 49.878' N 113° 03.976' W	
Alder Creek Drop Point	18	45° 50.194' N 113° 04.561' W	
Alder Creek Drop Point	19	45° 47.665' N 113° 01.347' W	
Alder Creek Drop Point	20	45° 47.328' N 113° 01.218' W	
Alder Creek Drop Point	23	45° 50.431' N 113° 05.118' W	
Alder Creek Hazard	TNT	45° 44.604' N 113° 00.863' W	
Alder Creek Helipoint	11	45° 48.972' N 113° 02.529' W	
Alder Creek Helipoint	11	45° 48.474' N 113° 01.642' W	
Alder Creek Helipoint	14	45° 36.595' N 113° 26.776' W	
Alder Creek Incident Command Post ICP		45° 46.352' N 112° 58.578' W	
Alder Creek Lookout		45° 48.339' N 113° 01.171' W	
Alder Creek Lookout		45° 49.036' N 113° 03.298' W	
Alder Creek Repeater	CMD 7	45° 53.835' N 112° 58.923' W	
Alder Creek Repeater	CMD 8	45° 34.637' N 113° 15.391' W	
Alder Creek Repeater	Maverick Mountain	45° 26.314' N 113° 08.557' W	
Alder Creek Repeater	Tower Mountain	45° 24.114' N 112° 53.477' W	
Alder Creek Safety Zone		45° 47.463' N 113° 00.173' W	
Alder Creek Safety Zone		45° 46.995' N 112° 59.710' W	
Alder Creek Value at Risk	Cabin	45° 50.473' N 113° 05.115' W	
Alder Creek Value at Risk	Cabin	45° 50.732' N 113° 04.282' W	
Alder Creek Value at Risk	21	45° 45.601' N 112° 59.992' W	
Alder Creek Value at Risk	22	45° 44.082' N 113° 01.052' W	
Alder Creek Value at Risk	40	45° 38.437' N 113° 36.614' W	
Alder Creek Value at Risk	50	45° 40.868' N 113° 50.051' W	
Alder Creek Value at Risk	51	45° 41.896' N 113° 54.158' W	
Alder Creek Value at Risk	52	45° 40.313' N 113° 55.840' W	
Alder Creek Value at Risk	53	45° 37.381' N 113° 54.330' W	
Alder Creek Value at Risk	54	45° 37.302' N 113° 53.993' W	
Alder Creek Value at Risk	1	45° 42.848' N 113° 52.552' W	
Alder Creek Value at Risk	10	45° 39.376' N 113° 54.851' W	
Alder Creek Value at Risk	2	45° 40.783' N 113° 49.968' W	
Alder Creek Value at Risk	3	45° 39.866' N 113° 49.191' W	
Alder Creek Value at Risk	30	45° 36.712' N 113° 49.839' W	
Alder Creek Value at Risk	31	45° 36.602' N 113° 50.044' W	
Alder Creek Value at Risk	32	45° 36.740' N 113° 50.583' W	
Alder Creek Value at Risk	4	45° 39.050' N 113° 46.981' W	
Alder Creek Value at Risk	6	45° 38.544' N 113° 49.410' W	
Alder Creek Value at Risk	7	45° 37.287' N 113° 51.437' W	
Alder Creek Value at Risk	8	45° 40.286' N 113° 52.043' W	
Alder Creek Value at Risk	9	45° 41.294' N 113° 56.150' W	
Alder Creek Value at Risk	Trail Creek	45° 41.165' N 113° 45.416' W	
Alder Creek Value at Risk	Trail Creek	45° 37.593' N 113° 42.493' W	
Alder Creek Value at Risk	Trail Creek	45° 42.215' N 113° 58.179' W	
Alder Creek Value at Risk	Trail Creek	45° 27.545' N 113° 52.841' W	
Alder Creek Value at Risk	Trail Creek	45° 55.995' N 113° 44.484' W	
Alder Creek Value at Risk	Trail Creek	45° 42.540' N 113° 44.322' W	
Alder Creek Value at Risk	Trail Creek	45° 37.007' N 113° 53.141' W	
Alder Creek Value at Risk	Trail Creek	45° 41.635' N 113° 56.854' W	
Alder Creek Value at Risk	Trail Creek	45° 42.804' N 113° 52.831' W	
Alder Creek Value at Risk	Trail Creek	45° 38.253' N 113° 40.794' W	
Alder Creek Value at Risk	Trail Creek	45° 37.404' N 113° 40.761' W	
Alder Creek Value at Risk	Trail Creek	45° 36.323' N 113° 41.098' W	

SA Blue Situation Unit
7/22/2021 0846
North American 1983 Datum, Lat/Long
Grid

Scale: 1:118,651

1 inch equals 2 miles

Esri, NASA, NGA, USGS, FEMA