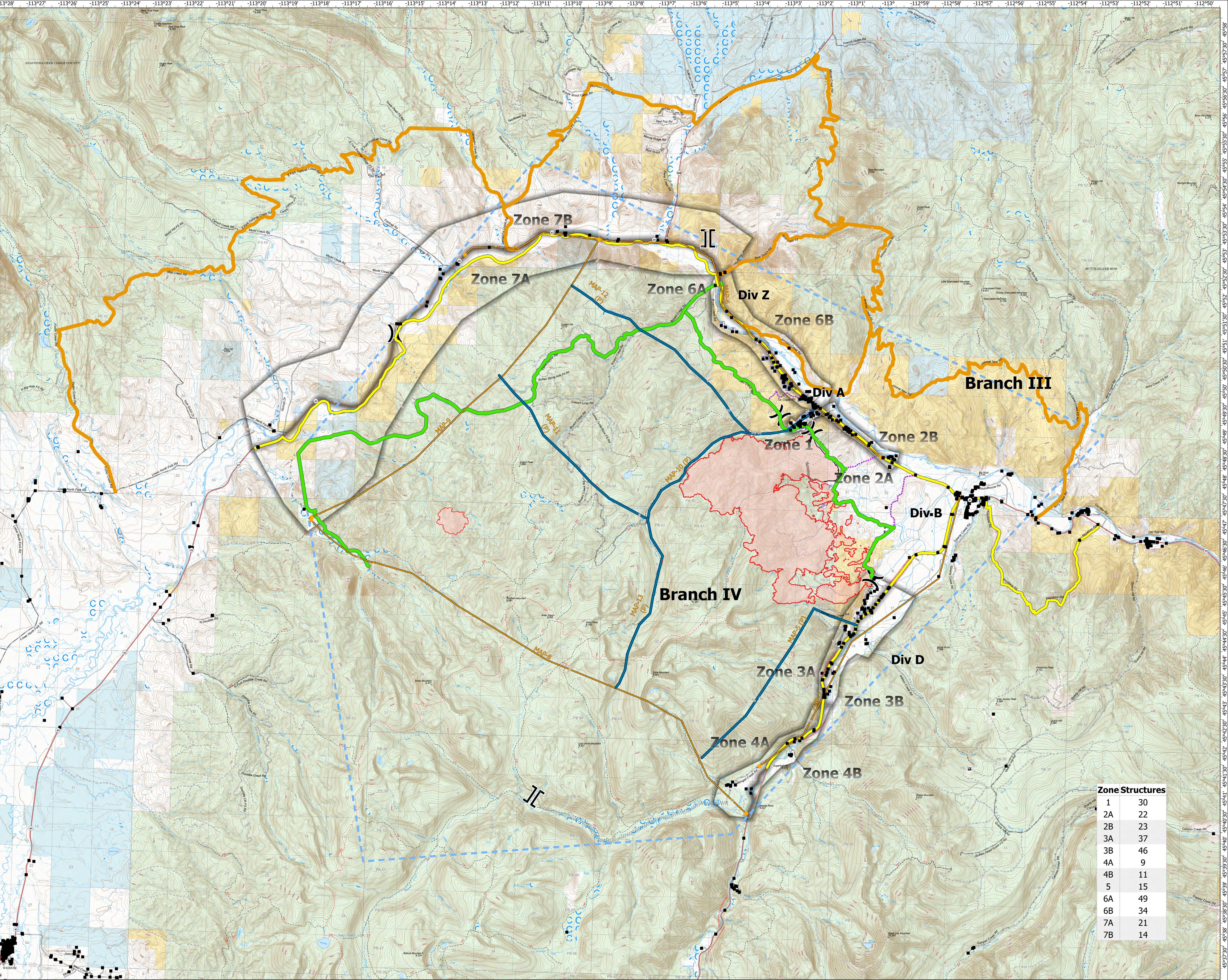


# MAPS

**MAP 6**  
 Performing a re-evaluation of the Organizational Needs Assessment;  
 Amending and expanding area/road/trail closures;  
 Scout & identify additional contingency lines;  
 Engagement with the Beaverhead County Sheriff's Office re: implementation of an Evacuation Plan;  
 Ensure good cooperation with impacted partners, homeowners, & land/home owners in/around the vicinity of Wise River, MT;  
 Continued communication and coordination with any potentially affected permittees;  
 Coordination with Montana Dept. of Transportation (MT DOT) & Montana Highway Patrol (MT MHP) re: potential flaggers or closure(s) on Hwy 43;  
 Coordination with Deer Lodge County & Silver Bow Counties, including respective Sheriffs, Commissioners, & Dept of Emergency Services (DES);  
 Coordinate with Montana Fish, Wildlife,

**MAP 7**  
 Performing a re-evaluation of the Organizational Needs Assessment, complexity analysis;  
 Recommend formal closure of the the Pioneer Scenic Byway;  
 Coordinate with Wise River Volunteer Fire Dept. (VFD) for structure assessments;  
 Adjust USFS & BLM access closures;  
 Explore relocating the current ICP.

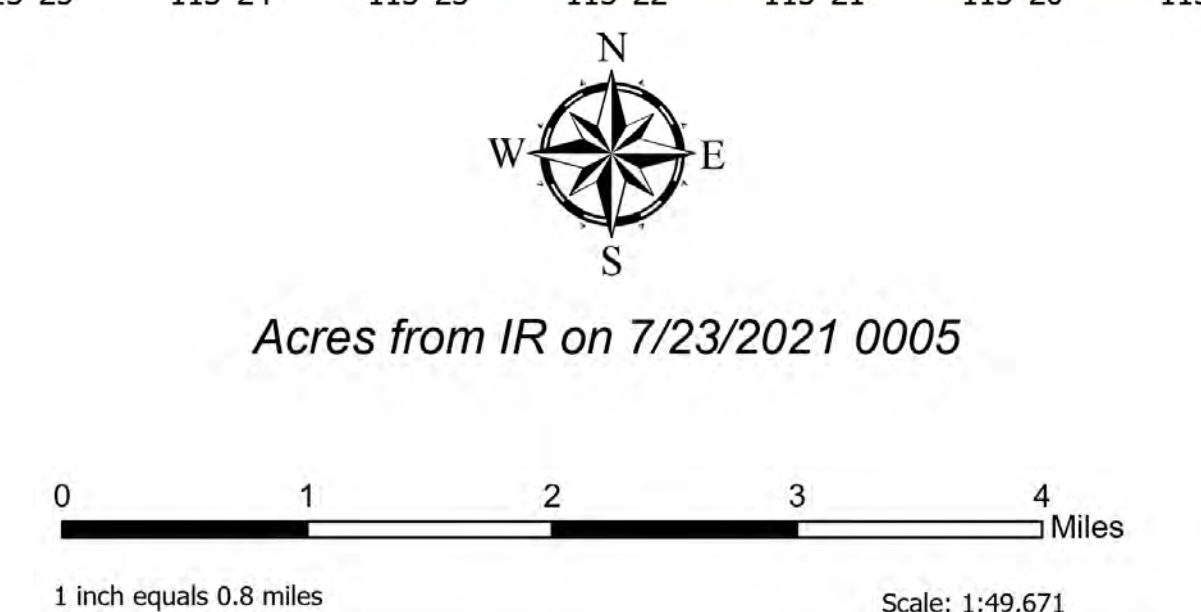
**MAP 1**  
 Performing a re-evaluation of the Organizational Needs Assessment;  
 Amending and expanding area/road/trail closures;  
 Scout & identify additional contingency lines;  
 Engagement with the Beaverhead County Sheriff's Office re: implementation of an Evacuation Plan;  
 Ensure good cooperation with impacted partners, homeowners, & land/home owners in/around the vicinity of Wise River, MT  
 Continued communication and coordination with any potentially affected permittees;  
 Coordination with MT DOT & MT MPH re: potential flaggers or closure(s) on Hwy 43.



Zone Structures	
1	30
2A	23
2B	22
3A	37
3B	46
4A	9
4B	11
5	15
6A	49
6B	34
7A	21
7B	14



**PACE**  
 Alder Creek  
 MT-BDF-006269  
 7/23/2021 Day  
 6,522 Acres



- PACE Level**
- Primary
- Alternate
- Contingency
- STATUS**
- Active
- Pending
- Structures
- Event Point
- Air Operations
- Aerial Hazard
- Airstrip or Airport
- Check Point
- Dip Site
- Mobile Retardant Base
- Helispot
- Helibase
- Sling Site
- Unimproved Landing Area
- Assignment Breaks
- Division Break
- Branch Break
- Zone Break
- Logistics
- Medical
- Incident Command Post
- Drop Point
- Closure
- Camp
- Staging Area
- Lookout
- Value at Risk
- Other
- Landmark
- Gate
- Fire Station
- Bridge
- Water Development or Draft Site
- Structure Wrap
- Stream Crossing
- Road Repair
- Retardant in Avoidance Area
- Resource Location
- Repair Point
- Landing or Log Deck
- Hazard Tree
- Fence - Cut/Damaged
- Dozer Push
- Culvert
- Clean Up Area
- Communications
- Mobile Weather Unit
- Internet Access
- Repeater
- Safety
- Value at Risk
- Safety Zone
- Hazard
- Water
- Water Source
- Restricted Water Source
- Event Line
- Ops Completed
- Completed Burnout
- Planned Mixed Construction Line
- Completed Dozer Line
- Completed Fuel Break
- Completed Hand Line
- Completed Mixed Construction Line
- Completed PLOW Line
- Completed Road as Line
- Ops Planned
- Planned Burnout
- Planned Dozer Line
- Planned Fuel Break
- Planned Hand Line
- Planned Mixed Construction Line
- Planned PLOW Line
- Planned Road as Line
- Planned Secondary Line
- Reference
- Access or Improved Road
- Fence
- Highlighted Feature
- Management Action Point
- Other
- Repair Line
- Road Repair

