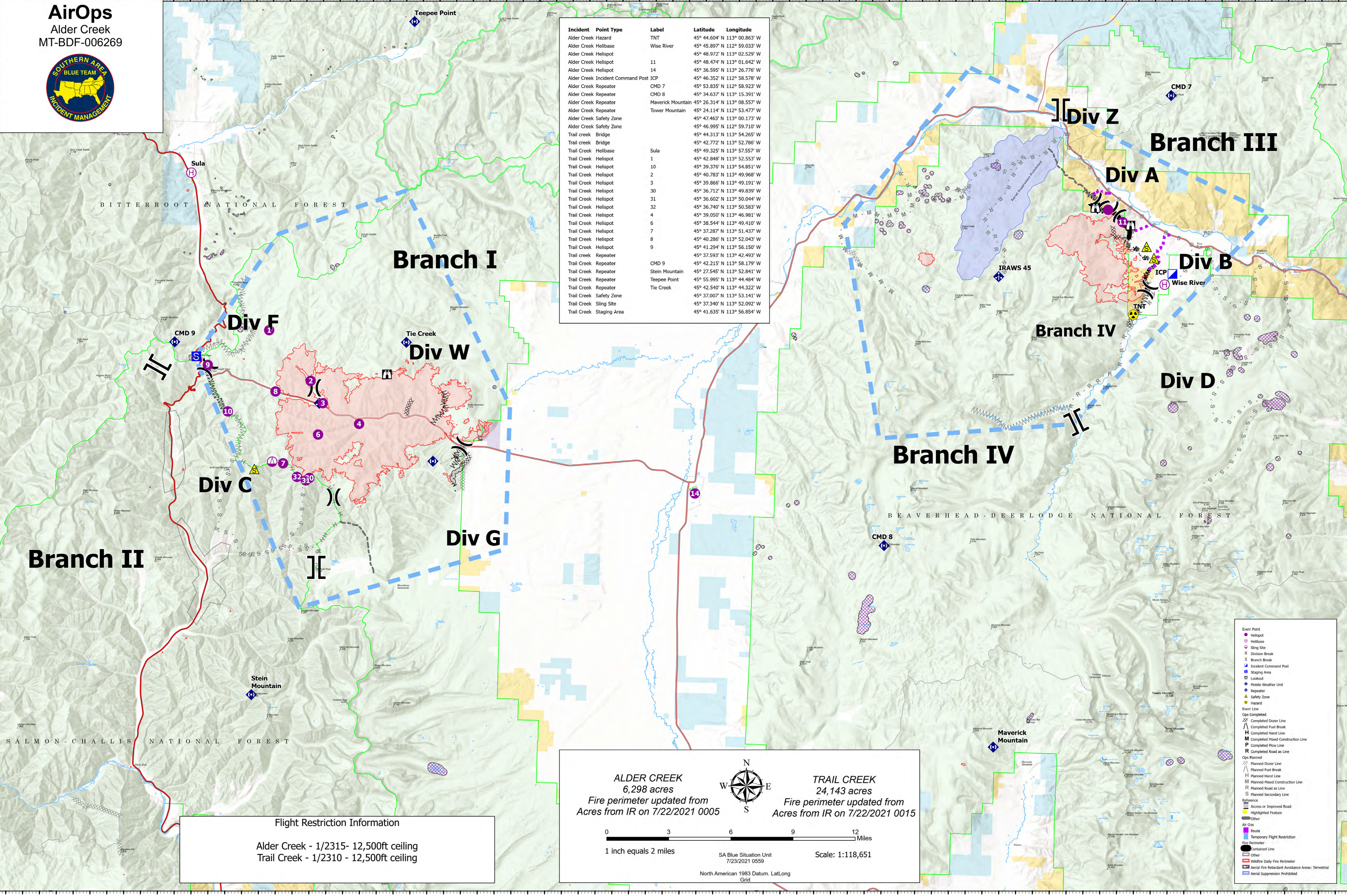


AirOps
Alder Creek
MT-BDF-006269



Incident	Point Type	Label	Latitude	Longitude
Alder Creek Hazard		TNT	45° 44.604' N 113° 00.863' W	
Alder Creek Helibase		Wise River	45° 45.897' N 112° 59.033' W	
Alder Creek Helispot			45° 48.972' N 113° 02.529' W	
Alder Creek Helispot		11	45° 48.474' N 113° 01.642' W	
Alder Creek Helispot		14	45° 36.595' N 113° 26.776' W	
Alder Creek Incident Command Post		ICP	45° 46.352' N 112° 58.578' W	
Alder Creek Repeater		CMD 7	45° 53.835' N 112° 58.923' W	
Alder Creek Repeater		CMD 8	45° 34.637' N 113° 15.391' W	
Alder Creek Repeater		Maverick Mountain	45° 26.314' N 113° 08.557' W	
Alder Creek Repeater		Tower Mountain	45° 24.114' N 112° 53.477' W	
Alder Creek Safety Zone			45° 47.463' N 113° 00.173' W	
Alder Creek Safety Zone			45° 46.995' N 112° 59.710' W	
Trail creek Bridge			45° 44.313' N 113° 54.265' W	
Trail creek Bridge			45° 42.772' N 113° 52.786' W	
Trail Creek Helibase		Sula	45° 49.325' N 113° 57.557' W	
Trail Creek Helispot		1	45° 42.848' N 113° 52.553' W	
Trail Creek Helispot		10	45° 39.376' N 113° 54.851' W	
Trail Creek Helispot		2	45° 40.783' N 113° 49.968' W	
Trail Creek Helispot		3	45° 39.866' N 113° 49.191' W	
Trail Creek Helispot		30	45° 36.712' N 113° 49.839' W	
Trail Creek Helispot		31	45° 36.602' N 113° 50.044' W	
Trail Creek Helispot		32	45° 36.740' N 113° 50.583' W	
Trail Creek Helispot		4	45° 39.050' N 113° 46.981' W	
Trail Creek Helispot		6	45° 38.544' N 113° 49.410' W	
Trail Creek Helispot		7	45° 37.287' N 113° 51.437' W	
Trail Creek Helispot		8	45° 40.286' N 113° 52.043' W	
Trail Creek Helispot		9	45° 41.294' N 113° 56.150' W	
Trail creek Repeater		CMD 9	45° 42.215' N 113° 58.179' W	
Trail Creek Repeater		Stein Mountain	45° 27.545' N 113° 52.841' W	
Trail Creek Repeater		Teepee Point	45° 55.995' N 113° 44.484' W	
Trail Creek Repeater		Tie Creek	45° 42.540' N 113° 44.322' W	
Trail Creek Safety Zone			45° 37.007' N 113° 53.141' W	
Trail Creek Sling Site			45° 37.340' N 113° 52.092' W	
Trail Creek Staging Area			45° 41.635' N 113° 56.854' W	



Flight Restriction Information
Alder Creek - 1/2315 - 12,500ft ceiling
Trail Creek - 1/2310 - 12,500ft ceiling

ALDER CREEK
6,298 acres
Fire perimeter updated from IR on 7/22/2021 0005

TRAIL CREEK
24,143 acres
Fire perimeter updated from IR on 7/22/2021 0015

1 inch equals 2 miles
Scale: 1:118,651
SA Blue Situation Unit
7/23/2021 0559
North American 1983 Datum, Lat/Long Grid

- Event Point
- Helispot
- Helibase
- Sling Site
- Division Break
- Branch Break
- Staging Area
- Incident Command Post
- Lookout
- Mobile Weather Unit
- Repeater
- Safety Zone
- Hazard
- Event Line
- Ops Completed
- Completed Dozer Line
- Completed Fuel Break
- Completed Hand Line
- Completed Mixed Construction Line
- Completed Plov Line
- Completed Road as Line
- Ops Planned
- Planned Dozer Line
- Planned Fuel Break
- Planned Hand Line
- Planned Mixed Construction Line
- Planned Road as Line
- Planned Secondary Road
- Reference
- Access or Improved Road
- Highlighted Feature
- Other
- Air Ops
- Route
- Temporary Flight Restriction
- Fire Perimeter
- Other
- Wildfire Daily Fire Perimeter
- Aerial Fire Retardant Avoidance Areas: Terrestrial
- Aerial Suppression Prohibited