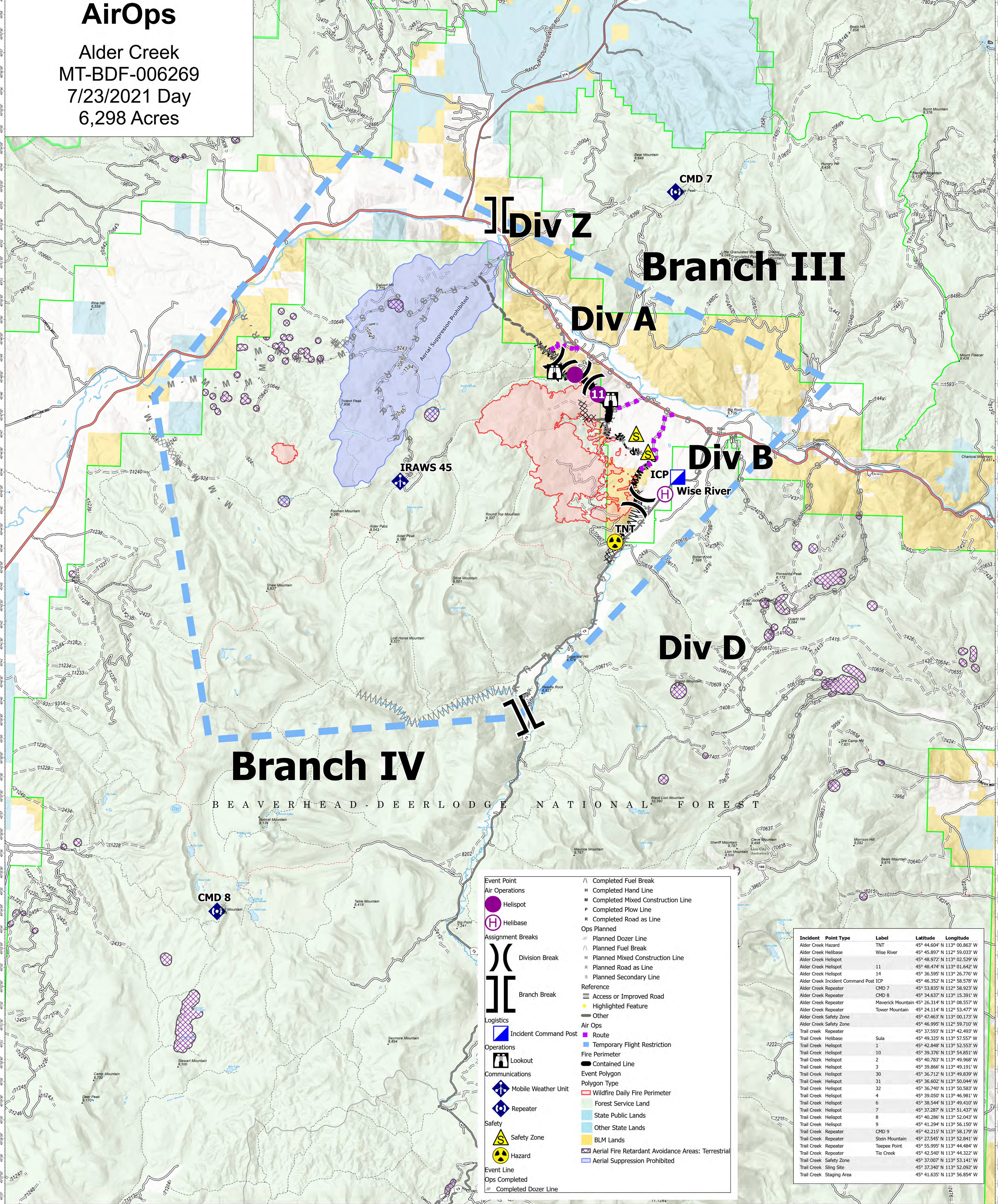


# AirOps

Alder Creek  
MT-BDF-006269  
7/23/2021 Day  
6,298 Acres



**Event Point**

- Air Operations
- Helispot
- Helibase

**Assignment Breaks**

- Division Break
- Branch Break

**Logistics**

- Incident Command Post
- Operations
- Lookout
- Communications
- Mobile Weather Unit
- Repeater
- Safety
- Safety Zone
- Hazard
- Event Line
- Ops Completed
- Completed Dozer Line

**Reference**

- Completed Fuel Break
- Completed Hand Line
- Completed Mixed Construction Line
- Completed Plow Line
- Completed Road as Line
- Ops Planned
- Planned Dozer Line
- Planned Fuel Break
- Planned Mixed Construction Line
- Planned Road as Line
- Planned Secondary Line

**Reference**

- Access or Improved Road
- Highlighted Feature
- Other

**Air Ops**

- Route
- Temporary Flight Restriction

**Fire Perimeter**

- Completed Line
- Event Polygon
- Polygon Type
- Wildfire Daily Fire Perimeter
- Forest Service Land
- State Public Lands
- Other State Lands
- BLM Lands
- Aerial Fire Retardant Avoidance Areas: Terrestrial
- Aerial Suppression Prohibited

Incident	Point Type	Label	Latitude	Longitude
Alder Creek Hazard	TNT		45° 44.604' N 113° 00.863' W	
Alder Creek Helibase	H	Wise River	45° 45.897' N 112° 59.033' W	
Alder Creek Helispot	M		45° 48.972' N 113° 02.529' W	
Alder Creek Helispot	11		45° 48.474' N 113° 01.642' W	
Alder Creek Helispot	14		45° 36.595' N 113° 26.776' W	
Alder Creek Incident Command Post ICP	ICP		45° 46.352' N 112° 58.578' W	
Alder Creek Repeater		CMD 7	45° 53.835' N 112° 58.923' W	
Alder Creek Repeater		CMD 8	45° 34.637' N 113° 15.391' W	
Alder Creek Repeater		Maverick Mountain	45° 26.314' N 113° 08.557' W	
Alder Creek Repeater		Tower Mountain	45° 24.114' N 112° 53.477' W	
Alder Creek Safety Zone			45° 47.463' N 113° 00.173' W	
Alder Creek Safety Zone			45° 46.995' N 112° 59.710' W	
Trail Creek Repeater			45° 37.593' N 113° 42.493' W	
Trail Creek Helibase	Sula		45° 49.325' N 113° 57.557' W	
Trail Creek Helispot	1		45° 42.848' N 113° 52.553' W	
Trail Creek Helispot	10		45° 39.376' N 113° 54.851' W	
Trail Creek Helispot	2		45° 40.783' N 113° 49.968' W	
Trail Creek Helispot	3		45° 39.866' N 113° 49.191' W	
Trail Creek Helispot	30		45° 36.712' N 113° 49.839' W	
Trail Creek Helispot	31		45° 36.602' N 113° 50.044' W	
Trail Creek Helispot	32		45° 36.740' N 113° 50.583' W	
Trail Creek Helispot	4		45° 39.050' N 113° 46.981' W	
Trail Creek Helispot	6		45° 38.544' N 113° 49.410' W	
Trail Creek Helispot	7		45° 37.287' N 113° 51.437' W	
Trail Creek Helispot	8		45° 40.286' N 113° 52.043' W	
Trail Creek Helispot	9		45° 41.294' N 113° 56.150' W	
Trail Creek Repeater		CMD 9	45° 42.215' N 113° 58.179' W	
Trail Creek Repeater		Stein Mountain	45° 27.545' N 113° 52.841' W	
Trail Creek Repeater		Teepee Point	45° 55.995' N 113° 44.484' W	
Trail Creek Repeater		Tie Creek	45° 42.540' N 113° 44.322' W	
Trail Creek Safety Zone			45° 37.007' N 113° 53.141' W	
Trail Creek Sling Site			45° 37.340' N 113° 52.092' W	
Trail Creek Staging Area			45° 41.635' N 113° 56.854' W	

**Flight Restriction Information**  
Alder Creek - 1/2315- 12,500ft ceiling  
Trail Creek - 1/2310 - 12,500ft ceiling



SA Blue Team  
7/23/2021 0603  
North American 1983 Datum, LatLong Grid



Fire perimeter updated from Acres from IR on 7/22/2021 0005

0 1 2 3 4 Miles  
Scale: 1:54,688  
1 inch equals 1 miles