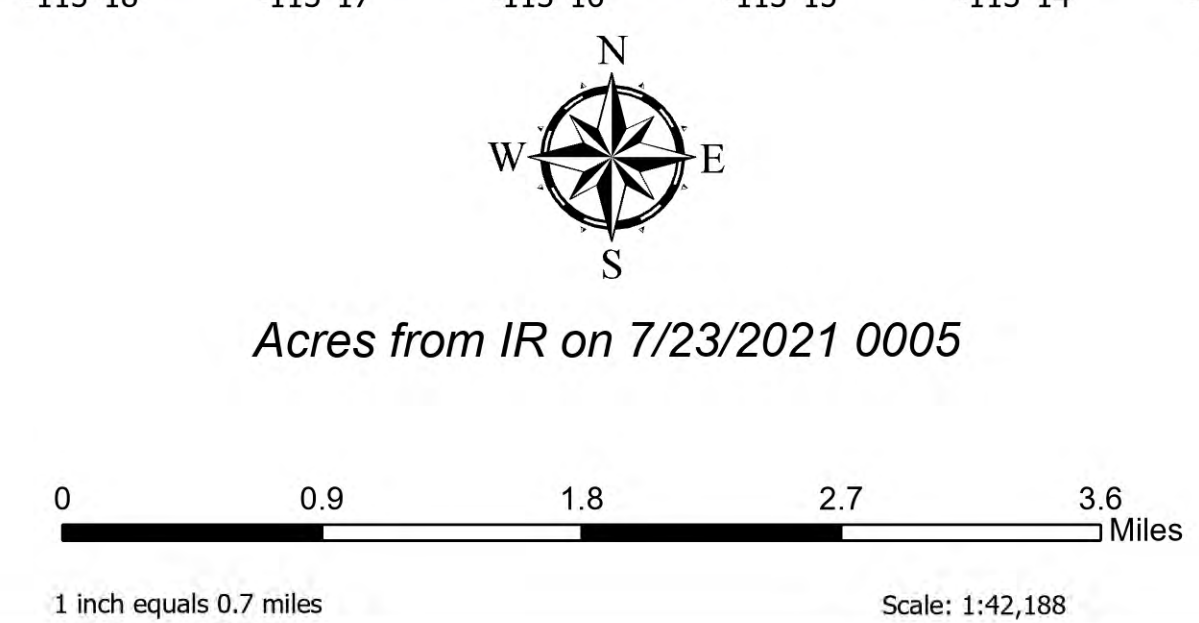


**FSPro**  
 Alder Creek  
 MT-BDF-006269  
 July 23, 2021  
 6,522 Acres



- |                         |                       |               |                     |                         |
|-------------------------|-----------------------|---------------|---------------------|-------------------------|
| Event Point             | Assignment Break      | Drop Point    | Repair              | Safety                  |
| Air Operations          | Division Break        | Lookout       | Repair Point        | Safety Zone             |
| Helibase                | Branch Break          | Reference     | Landing or Log Deck | Hazard                  |
| Unimproved Landing Area | Logistics             | Value at Risk | Clean Up Area       | Intergency Fire History |
|                         | Incident Command Post | Other         | Mobile Weather Unit |                         |
|                         |                       | Gate          |                     |                         |

- |            |                          |
|------------|--------------------------|
| 80 - 100%  | Management Action Points |
| 60 - 79%   | MAP_Trail_20210721       |
| 40 - 59%   |                          |
| 20 - 39%   |                          |
| 5 - 19%    |                          |
| 0.2 - 4.9% |                          |
| < 0.2%     |                          |

**14 Day**

SA Blue Situation Unit  
 7/23/2021 1141  
 North American 1983 Datum, Lat/Long Grid