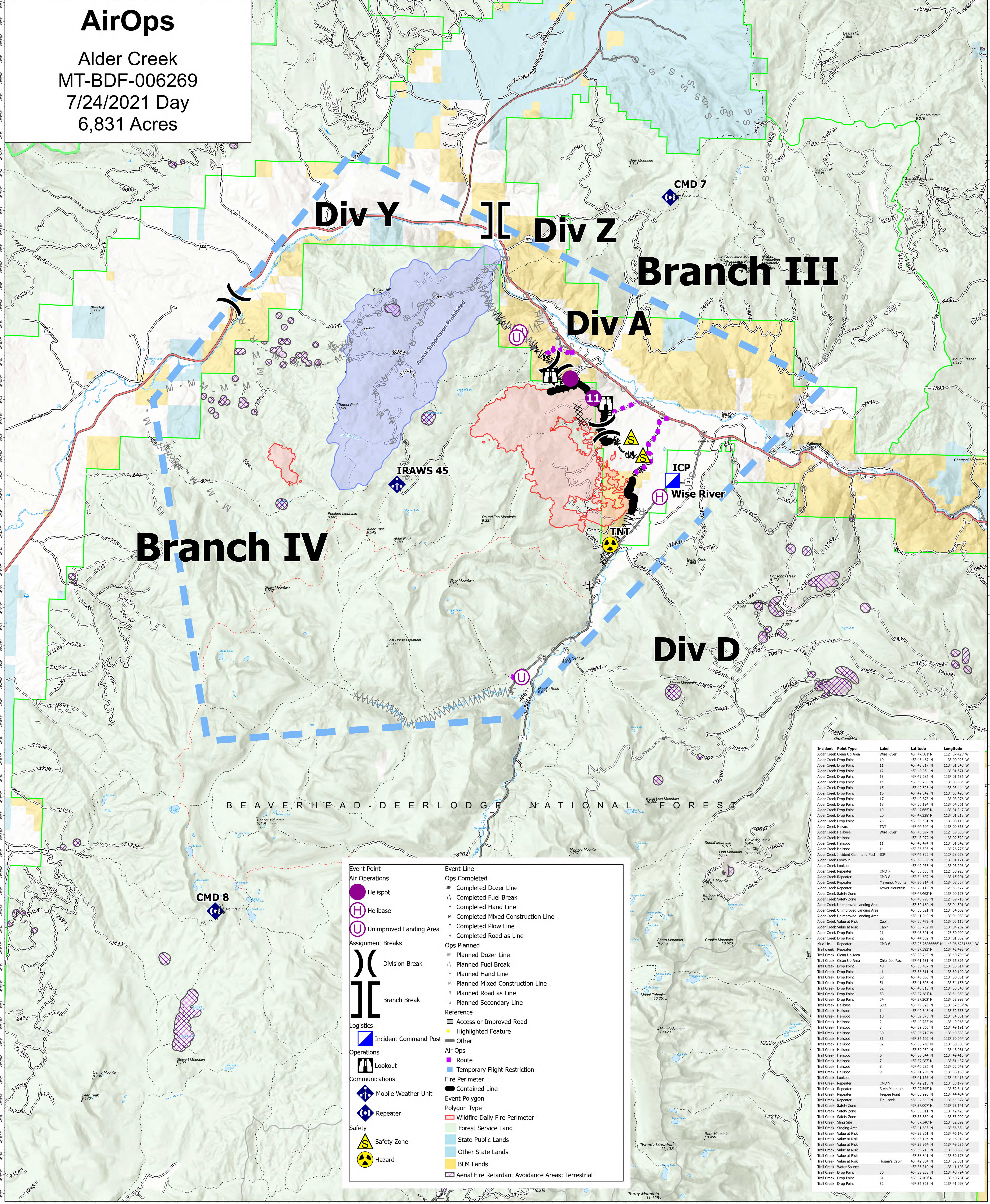


AirOps

Alder Creek
MT-BDF-006269
7/24/2021 Day
6,831 Acres



Incident	Point Type	Label	Latitude	Longitude
Alder Creek Clean Up Area	Wise River		45° 47.581' N	112° 57.423' W
Alder Creek Drop Point		10	45° 46.467' N	113° 00.025' W
Alder Creek Drop Point		11	45° 48.317' N	113° 01.368' W
Alder Creek Drop Point		12	45° 48.354' N	113° 01.571' W
Alder Creek Drop Point		13	45° 49.286' N	113° 01.636' W
Alder Creek Drop Point		14	45° 49.235' N	113° 01.094' W
Alder Creek Drop Point		15	45° 49.526' N	113° 01.944' W
Alder Creek Drop Point		16	45° 49.549' N	113° 01.495' W
Alder Creek Drop Point		17	45° 49.878' N	113° 03.976' W
Alder Creek Drop Point		18	45° 50.194' N	113° 04.561' W
Alder Creek Drop Point		19	45° 49.665' N	113° 01.847' W
Alder Creek Drop Point		20	45° 47.328' N	113° 01.218' W
Alder Creek Drop Point		23	45° 50.431' N	113° 05.118' W
Alder Creek Hazard	TNT		45° 44.604' N	113° 00.853' W
Alder Creek Helibase	Wise River		45° 45.897' N	112° 59.033' W
Alder Creek Helispot		11	45° 48.972' N	113° 02.529' W
Alder Creek Helispot		14	45° 48.474' N	113° 01.642' W
Alder Creek Helispot		14	45° 36.995' N	113° 06.716' W
Alder Creek Incident Command Post	ICP		45° 46.352' N	112° 58.576' W
Alder Creek Lookout			45° 48.339' N	113° 01.171' W
Alder Creek Lookout			45° 49.036' N	113° 03.296' W
Alder Creek Repeater	CMD 7		45° 33.037' N	113° 08.027' W
Alder Creek Repeater	CMD 8		45° 34.637' N	113° 15.391' W
Alder Creek Repeater	Tower Mountain		45° 24.114' N	112° 53.477' W
Alder Creek Safety Zone			45° 42.403' N	113° 00.717' W
Alder Creek Safety Zone			45° 46.995' N	112° 59.710' W
Alder Creek Unimproved Landing Area			45° 50.160' N	113° 04.501' W
Alder Creek Unimproved Landing Area			45° 50.021' N	113° 04.262' W
Alder Creek Unimproved Landing Area			45° 41.907' N	113° 04.083' W
Alder Creek Value at Risk	Cabin		45° 50.473' N	113° 05.115' W
Alder Creek Value at Risk	Cabin		45° 50.732' N	113° 04.282' W
Alder Creek Drop Point		21	45° 45.601' N	113° 03.902' W
Alder Creek Drop Point		22	45° 44.082' N	113° 01.052' W
Mud Lick Repeater	CMD 6		45° 25.786666666666666' N	114° 06.628166666666666' W
Trail Creek Repeater			45° 37.593' N	113° 42.493' W
Trail Creek Clean Up Area			45° 38.249' N	113° 40.794' W
Trail Creek Clean Up Area	Chief Joe Pass		45° 41.631' N	113° 56.896' W
Trail Creek Drop Point		40	45° 38.437' N	113° 38.614' W
Trail Creek Drop Point		41	45° 38.611' N	113° 39.192' W
Trail Creek Drop Point		50	45° 40.866' N	113° 50.051' W
Trail Creek Drop Point		51	45° 41.896' N	113° 54.158' W
Trail Creek Drop Point		52	45° 40.313' N	113° 55.840' W
Trail Creek Drop Point		53	45° 37.381' N	113° 54.250' W
Trail Creek Drop Point		54	45° 32.302' N	113° 53.983' W
Trail Creek Helibase	Sula		45° 49.325' N	113° 57.557' W
Trail Creek Helispot		1	45° 42.848' N	113° 52.553' W
Trail Creek Helispot		10	45° 39.376' N	113° 54.851' W
Trail Creek Helispot		2	45° 40.783' N	113° 49.966' W
Trail Creek Helispot		3	45° 39.866' N	113° 49.191' W
Trail Creek Helispot		30	45° 36.712' N	113° 49.839' W
Trail Creek Helispot		31	45° 36.602' N	113° 50.944' W
Trail Creek Helispot		32	45° 36.740' N	113° 50.583' W
Trail Creek Helispot		4	45° 39.050' N	113° 46.981' W
Trail Creek Helispot		6	45° 38.544' N	113° 49.410' W
Trail Creek Helispot		7	45° 37.207' N	113° 51.337' W
Trail Creek Helispot		8	45° 40.285' N	113° 52.043' W
Trail Creek Helispot		9	45° 41.294' N	113° 56.150' W
Trail Creek Lookout			45° 41.165' N	113° 45.416' W
Trail Creek Repeater	CMD 9		45° 42.215' N	113° 58.179' W
Trail Creek Repeater	Stein Mountain		45° 22.545' N	113° 52.841' W
Trail Creek Repeater	Topsee Point		45° 55.995' N	113° 44.484' W
Trail Creek Repeater	Tie Creek		45° 42.540' N	113° 44.222' W
Trail Creek Safety Zone			45° 37.007' N	113° 53.141' W
Trail Creek Safety Zone			45° 33.011' N	113° 42.425' W
Trail Creek Safety Zone			45° 38.839' N	113° 53.999' W
Trail Creek Slingshot			45° 37.940' N	113° 52.092' W
Trail Creek Staging Area			45° 41.635' N	113° 56.954' W
Trail Creek Value at Risk			45° 32.861' N	113° 46.145' W
Trail Creek Value at Risk			45° 33.106' N	113° 48.314' W
Trail Creek Value at Risk			45° 32.964' N	113° 49.250' W
Trail Creek Value at Risk			45° 39.213' N	113° 38.800' W
Trail Creek Value at Risk	Hogan's Cabin		45° 38.841' N	113° 39.176' W
Trail Creek Value at Risk			45° 42.804' N	113° 52.831' W
Trail Creek Water Source			45° 36.319' N	113° 41.186' W
Trail Creek Drop Point		30	45° 38.252' N	113° 40.794' W
Trail Creek Drop Point		31	45° 37.404' N	113° 40.761' W
Trail Creek Drop Point		32	45° 36.323' N	113° 41.098' W

Event Point		Event Line	
Air Operations		Ops Completed	
● Helispot	⋈ Completed Dozer Line	⋈ Completed Fuel Break	M Completed Hand Line
Ⓜ Helibase	M Completed Mixed Construction Line	P Completed Plow Line	R Completed Road as Line
Ⓢ Unimproved Landing Area			
Assignment Breaks		Ops Planned	
⎵ Division Break	⋈ Planned Dozer Line	⋈ Planned Fuel Break	M Planned Hand Line
⎵ Branch Break	⋈ Planned Mixed Construction Line	R Planned Road as Line	⋈ Planned Secondary Line
Logistics		Reference	
Ⓜ Incident Command Post	— Access or Improved Road	● Highlighted Feature	— Other
Operations		Event Polygon	
Ⓜ Lookout	— Fire Perimeter	— Contained Line	— Forest Service Land
Ⓜ Mobile Weather Unit	— Temporary Flight Restriction	— State Public Lands	— Other State Lands
Ⓜ Repeater	— Fire Retardant	— BLM Lands	— Aerial Fire Retardant Avoidance Areas: Terrestrial
Communications		Safety	
Ⓜ Safety Zone	⚠ Hazard		

Flight Restriction Information
Alder Creek - 1/2315 - 12,500ft ceiling
Trail Creek - 1/2310 - 12,500ft ceiling



SA Blue Team
7/24/2021 0811
North American 1983 Datum. LatLong Grid

Fire perimeter updated from Acres from IR on 7/23/2021 2300

Scale: 1:54,688
1 inch equals 1 mile