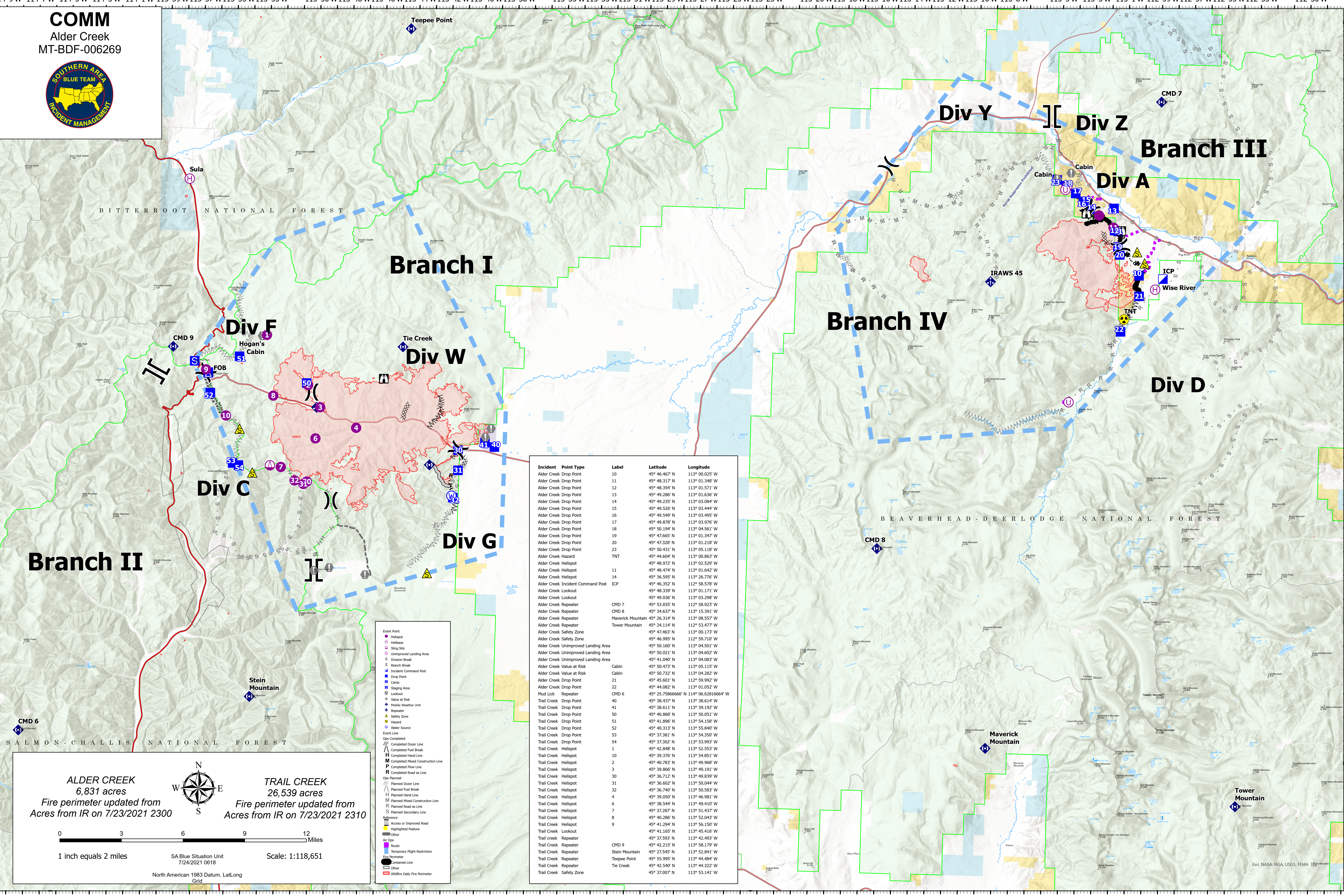


COMM
Alder Creek
MT-BDF-006269



ALDER CREEK
6,831 acres
Fire perimeter updated from
Acres from IR on 7/23/2021 2300

TRAIL CREEK
26,539 acres
Fire perimeter updated from
Acres from IR on 7/23/2021 2310

0 3 6 9 12 Miles

1 inch equals 2 miles

SA Blue Situation Unit
7/24/2021 0618

Scale: 1:118,651

North American 1983 Datum, Lat/Long
Grid

- Event Point
- Helispot
- Helibase
- Sling Site
- Unimproved Landing Area
- Division Break
- Branch Break
- Incident Command Post
- Drop Point
- Camp
- Staging Area
- Lookout
- Value at Risk
- Mobile Weather Unit
- Repeater
- Safety Zone
- Hazard
- Water Source
- Event Line
- Ops Completed
- Completed Dozer Line
- Completed Fuel Break
- Completed Hand Line
- Completed Mixed Construction Line
- Completed Plow Line
- Completed Road as Line
- Ops Planned
- Planned Dozer Line
- Planned Fuel Break
- Planned Hand Line
- Planned Mixed Construction Line
- Planned Road as Line
- Planned Secondary Line
- Reference
- Access or Improved Road
- Highlighted Feature
- Other
- Air Ops
- Restrict
- Temporary Flight Restriction
- Fire Perimeter
- Contained Line
- Other
- Wildfire Daily Fire Perimeter

Incident Point Type	Label	Latitude	Longitude
Alder Creek Drop Point	10	45° 46.467' N	113° 00.025' W
Alder Creek Drop Point	11	45° 48.317' N	113° 01.348' W
Alder Creek Drop Point	12	45° 48.354' N	113° 01.571' W
Alder Creek Drop Point	13	45° 49.286' N	113° 01.636' W
Alder Creek Drop Point	14	45° 49.235' N	113° 03.084' W
Alder Creek Drop Point	15	45° 49.526' N	113° 03.444' W
Alder Creek Drop Point	16	45° 49.549' N	113° 03.495' W
Alder Creek Drop Point	17	45° 49.878' N	113° 03.976' W
Alder Creek Drop Point	18	45° 50.194' N	113° 04.561' W
Alder Creek Drop Point	19	45° 47.665' N	113° 01.347' W
Alder Creek Drop Point	20	45° 47.238' N	113° 01.218' W
Alder Creek Drop Point	23	45° 50.431' N	113° 05.118' W
Alder Creek Hazard	TNT	45° 44.604' N	113° 00.863' W
Alder Creek Helispot	11	45° 48.972' N	113° 02.529' W
Alder Creek Helispot	14	45° 48.474' N	113° 01.642' W
Alder Creek Helispot	14	45° 36.595' N	113° 26.776' W
Alder Creek Incident Command Post	ICP	45° 46.352' N	112° 58.578' W
Alder Creek Lookout	45° 48.339' N	113° 01.171' W	
Alder Creek Lookout	45° 49.036' N	113° 03.298' W	
Alder Creek Repeater	CMD 7	45° 53.835' N	112° 58.923' W
Alder Creek Repeater	CMD 8	45° 34.637' N	113° 15.391' W
Alder Creek Repeater	Maverick Mountain	45° 26.314' N	113° 08.557' W
Alder Creek Repeater	Tower Mountain	45° 24.114' N	112° 53.477' W
Alder Creek Safety Zone	45° 47.463' N	113° 00.173' W	
Alder Creek Safety Zone	45° 46.995' N	112° 59.710' W	
Alder Creek Unimproved Landing Area	45° 50.160' N	113° 04.501' W	
Alder Creek Unimproved Landing Area	45° 50.021' N	113° 04.602' W	
Alder Creek Unimproved Landing Area	45° 41.040' N	113° 04.083' W	
Alder Creek Value at Risk	Cabin	45° 50.473' N	113° 05.115' W
Alder Creek Value at Risk	Cabin	45° 50.732' N	113° 04.282' W
Alder Creek Drop Point	21	45° 45.601' N	112° 59.992' W
Alder Creek Drop Point	22	45° 44.082' N	113° 01.052' W
Mud Lick Repeater	CMD 6	45° 35.73865666' N	114° 06.628165664' W
Trail Creek Drop Point	40	45° 38.737' N	113° 38.614' W
Trail Creek Drop Point	41	45° 38.611' N	113° 39.192' W
Trail Creek Drop Point	50	45° 40.868' N	113° 50.051' W
Trail Creek Drop Point	51	45° 41.896' N	113° 54.158' W
Trail Creek Drop Point	52	45° 40.313' N	113° 55.840' W
Trail Creek Drop Point	53	45° 37.381' N	113° 54.350' W
Trail Creek Drop Point	54	45° 37.302' N	113° 53.993' W
Trail Creek Helispot	1	45° 42.848' N	113° 52.553' W
Trail Creek Helispot	10	45° 39.376' N	113° 54.851' W
Trail Creek Helispot	2	45° 40.783' N	113° 49.968' W
Trail Creek Helispot	3	45° 39.866' N	113° 49.191' W
Trail Creek Helispot	30	45° 36.712' N	113° 49.839' W
Trail Creek Helispot	31	45° 36.602' N	113° 50.044' W
Trail Creek Helispot	32	45° 36.740' N	113° 50.583' W
Trail Creek Helispot	4	45° 39.050' N	113° 46.981' W
Trail Creek Helispot	6	45° 38.544' N	113° 49.410' W
Trail Creek Helispot	7	45° 37.287' N	113° 51.437' W
Trail Creek Helispot	8	45° 40.286' N	113° 52.043' W
Trail Creek Helispot	9	45° 41.294' N	113° 56.150' W
Trail Creek Lookout	45° 41.165' N	113° 45.416' W	
Trail Creek Repeater	45° 37.593' N	113° 42.493' W	
Trail Creek Repeater	45° 42.215' N	113° 58.179' W	
Trail Creek Repeater	45° 27.545' N	113° 52.841' W	
Trail Creek Repeater	45° 55.995' N	113° 44.484' W	
Trail Creek Repeater	45° 42.540' N	113° 44.322' W	
Trail Creek Safety Zone	45° 37.007' N	113° 53.141' W	