

MAPS

MAP 6
 Performing a re-evaluation of the Organizational Needs Assessment; Amending and expanding area/road/trail closures; Scout & identify additional contingency lines; Engagement with the Beaverhead County Sheriff's Office re: implementation of an Evacuation Plan; Ensure good cooperation with impacted partners, homeowners, & land/home owners in/around the vicinity of Wise River, MT; Continued communication and coordination with any potentially affected permittees; Coordination with Montana Dept. of Transportation (MT DOT) & Montana Highway Patrol (MHP) re: potential flaggers or closures(s) on Hwy 43; Coordination with Deer Lodge County & Silver Bow Counties, including respective Sheriffs, Commissioners, & Dept. of Emergency Services (DES); Coordinate with Montana Fish, Wildlife,

MAP 7
 Performing a re-evaluation of the Organizational Needs Assessment, complexity analysis; Recommend formal closure of the the Pioneer Scenic Byway; Coordinate with Wise River Volunteer Fire Dept. (VFD) for structure assessments; Adjust USFS & BLM access closures; Explore relocating the current ICP.

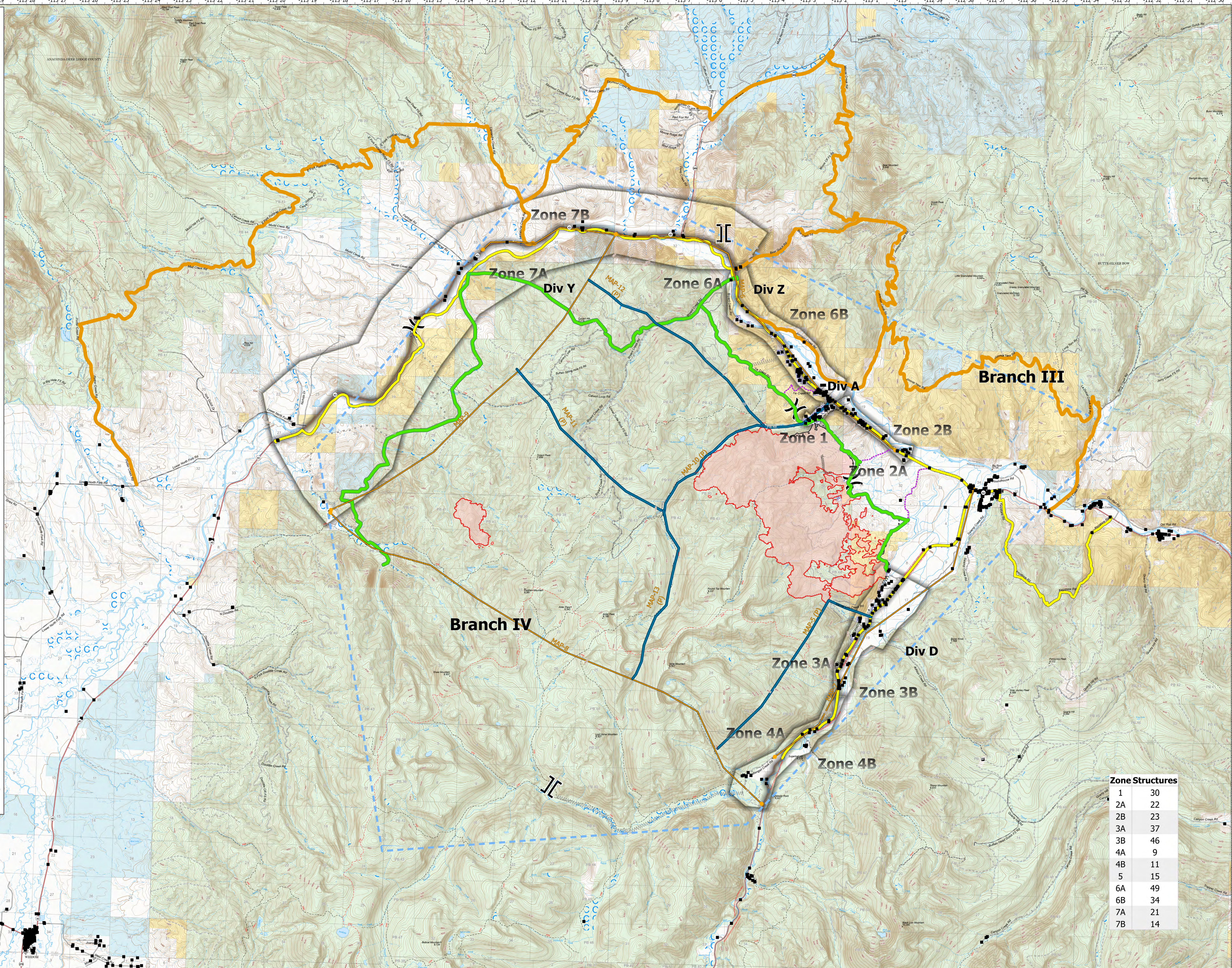
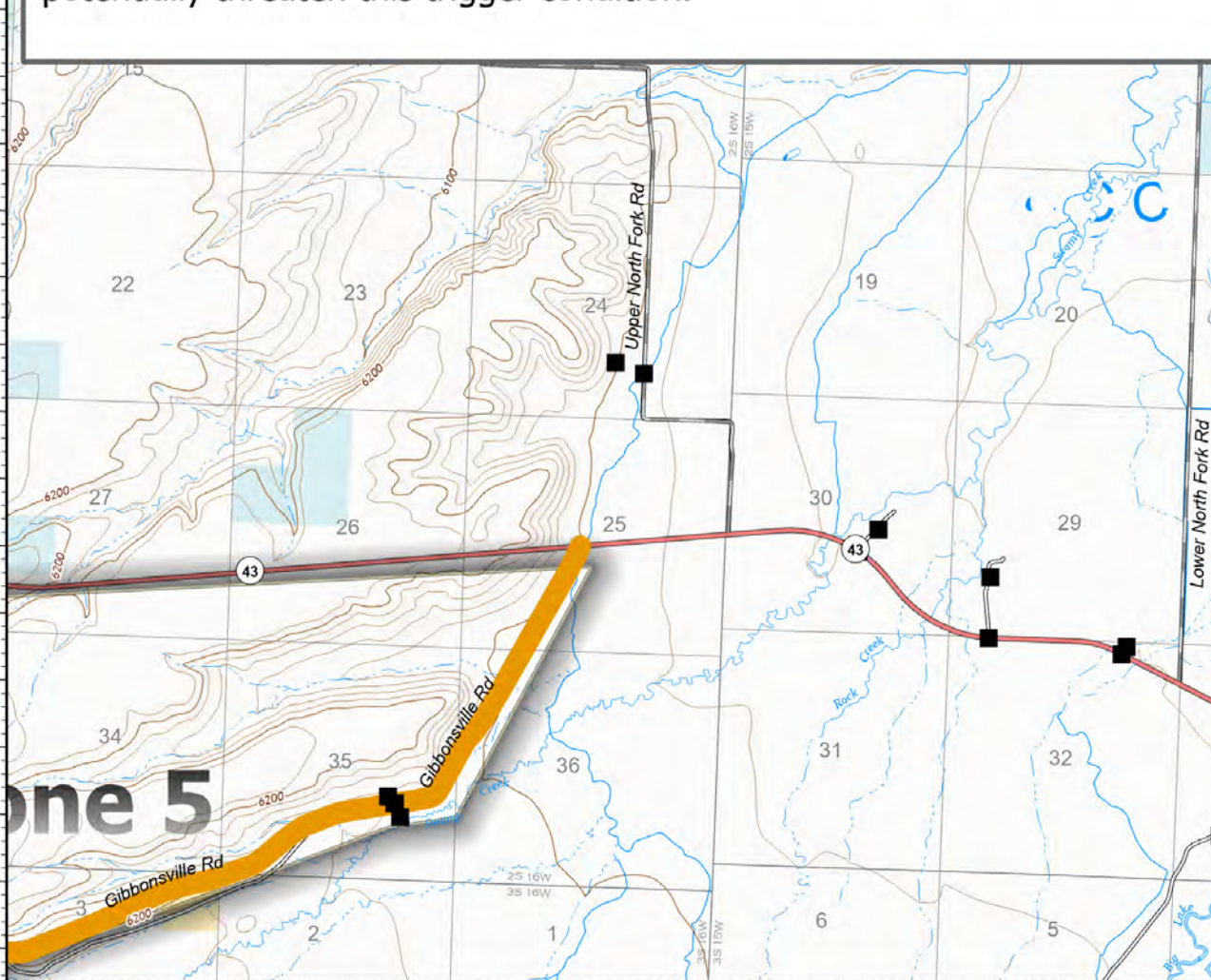
MAP 1
 Performing a re-evaluation of the Organizational Needs Assessment; Amending and expanding area/road/trail closures; Scout & identify additional contingency lines; Engagement with the Beaverhead County Sheriff's Office re: implementation of an Evacuation Plan; Ensure good cooperation with impacted partners, homeowners, & land/home owners in/around the vicinity of Wise River, MT; Continued communication and coordination with any potentially affected permittees; Coordination with MT DOT & MT MPH re: potential flaggers or closures(s) on Hwy 43.

MAP 10
 Map Description: Line follows the Alder Creek from the Primary control line above the Highway 43 and Big Hole River drainage up to the confluence of Alder and Osborne Creeks.
 Values at Risk: Private Residences, other structures, and associated property west of Alder Creek along the Highway 43 corridor.
 Trigger Condition: If the fire crosses alder creek and establishes on the slopes on the other side under conditions that would prevent containing a stopper.
 Probability: Fire is down to the creek along the MAP line and is poised to spot across. With long season remaining and prospect of torching behavior makes the trigger condition possible.

MAP 11
 Map Description: This MAP line connects MAP 10 (Alder Creek North) and Map 9 (Alder) between the confluence of the Alder and Osborne Creeks across Foothill Ridge and across the head of Bryant Creek approximately 5.5 miles southwest of the Highway 43 corridor.
 Values at Risk: Private Residences, other structures, and associated property west of Alder Creek along the Highway 43 corridor.
 Trigger Condition: If the fire crosses or threatens to cross MAP 11, establishing solidly at the head of Bryant Creek.
 Probability: Christenson Fire is currently 3 miles from crossing MAP line and Alder creek fire is cold adjacent to Foothill Ridge, but fire weather conducive to large spread events is likely in the next 1 to 2 months.

MAP 12
 Map Description: A line across the Bryant Creek drainage that connects MAP 9 (Alder) on the west and MAP 10 (Alder Creek North) on the east, about a mile above the Highway 43 corridor.
 Values at Risk: Private Residences, other structures, and associated property west of Alder Creek along the Highway 43 corridor.
 Trigger Condition: If the fire crosses or threatens to cross MAP 1, with the potential to threaten the Highway 43 corridor, values along it, and lands across the Big Hole River.
 Probability: The Alder fire has remained at the edge of Alder Creek for a number of days and has remained relatively quiet. The Christenson fire is still over 6 miles from the MAP line. But with much of the season remaining, the trigger remains a possibility.

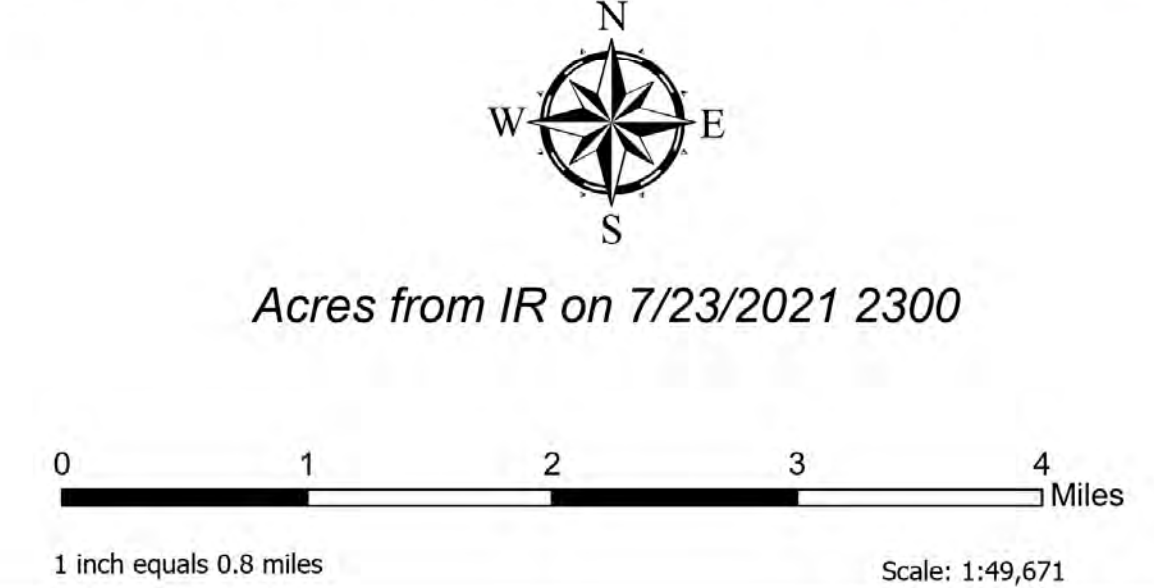
MAP 13
 Map Description: A line along the Osborne Creek between a point along MAP 8 and the confluence of the Alder and Osborne Creeks where the line links to MAP 10 and MAP 12.
 Values at Risk: Private Residences, other structures and associated property, as well as public access along the Scenic Byway.
 Trigger Condition: If the fire crosses or threatens to cross MAP 13, with potential for imminent spread toward the Scenic Byway corridor.
 Probability: Active fires in this area show a propensity to spread to the East. With peak fire season ahead, both the Christenson and the Alder Fire potentially threaten this trigger condition.



| Zone Structures | |
|-----------------|----|
| 1 | 30 |
| 2A | 22 |
| 2B | 23 |
| 3A | 37 |
| 3B | 46 |
| 4A | 9 |
| 4B | 11 |
| 5 | 15 |
| 6A | 49 |
| 6B | 34 |
| 7A | 21 |
| 7B | 14 |



PACE
 Alder Creek
 MT-BDF-006269
 7/23/2021 Day
 6,831 Acres



- Primary
- Alternate
- Contingency
- STATUS
- Active
- Pending
- Structures
- Event Point
- Air Operations
- Aerial Hazard
- Airstrip or Airport
- Check Point

