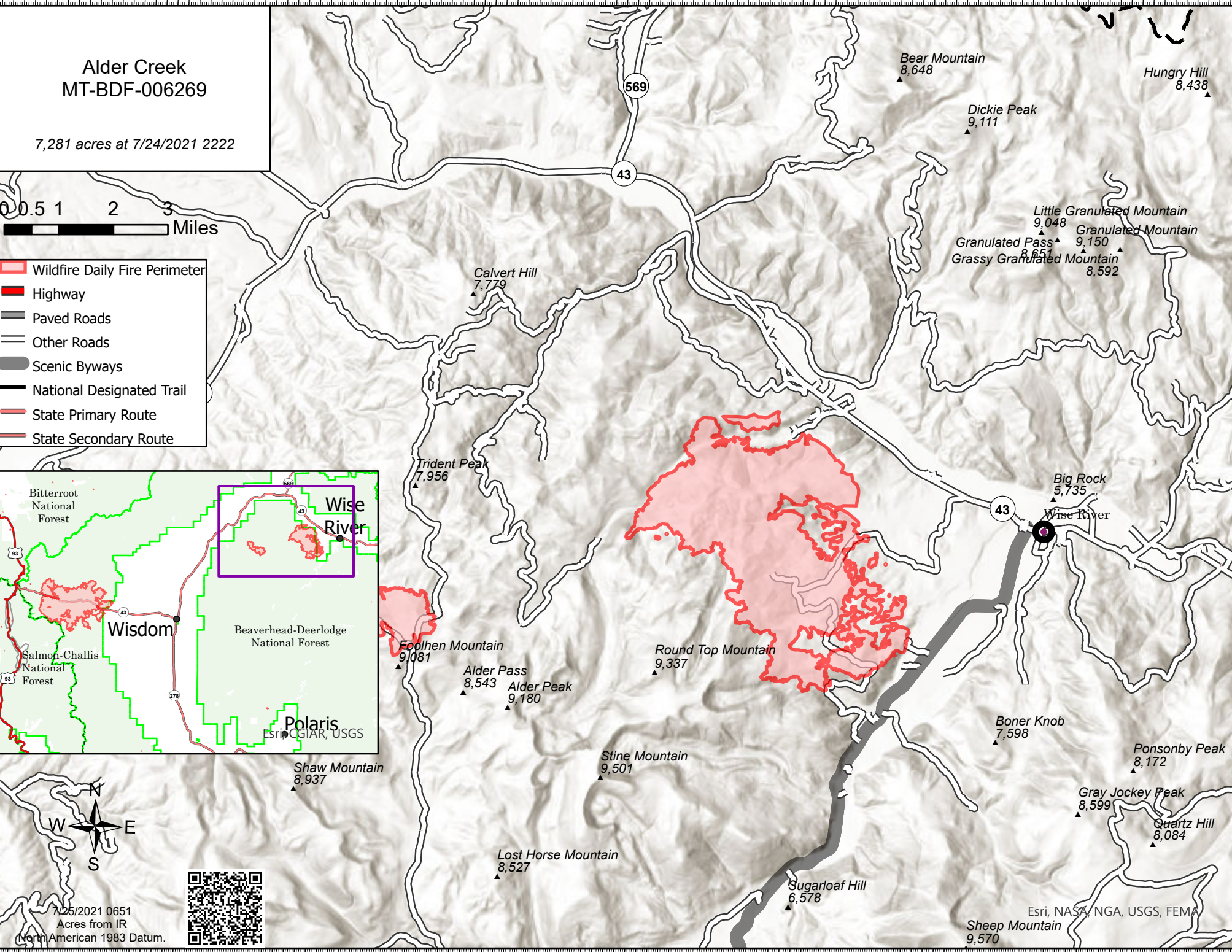
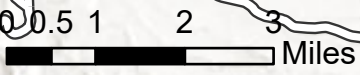


113°21.01'W 113°19'W 113°17.5'W 113°16'W 113°14.5'W 113°13'W 113°11.5'W 113°10'W 113°8.5'W 113°7'W 113°5.5'W 113°4'W 113°2.5'W 113°1'W 112°59.5'W 112°58'W 112°56.5'W 112°55'W 112°53.5'W

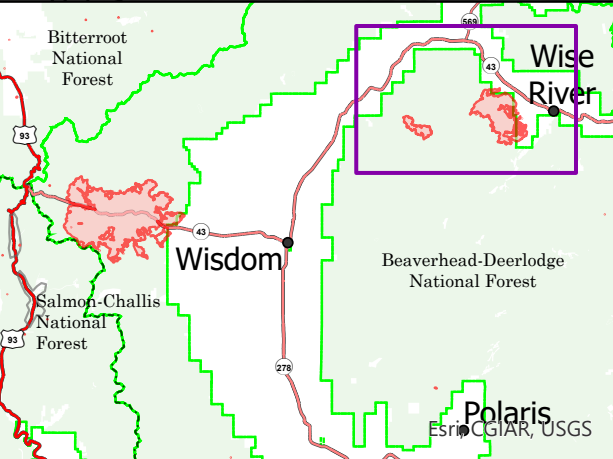


Alder Creek MT-BDF-006269

7,281 acres at 7/24/2021 2222



- Wildfire Daily Fire Perimeter
- Highway
- Paved Roads
- Other Roads
- Scenic Byways
- National Designated Trail
- State Primary Route
- State Secondary Route



7/25/2021 0651
Acres from IR
North American 1983 Datum.

Esri, NASA, NGA, USGS, FEMA

45°40.5'N 45°41.5'N 45°42.5'N 45°43.5'N 45°44.5'N 45°45.5'N 45°46.49'N 45°47.5'N 45°48.5'N 45°49.5'N 45°50.5'N 45°51.5'N 45°52.5'N 45°53.99'N 45°55'N