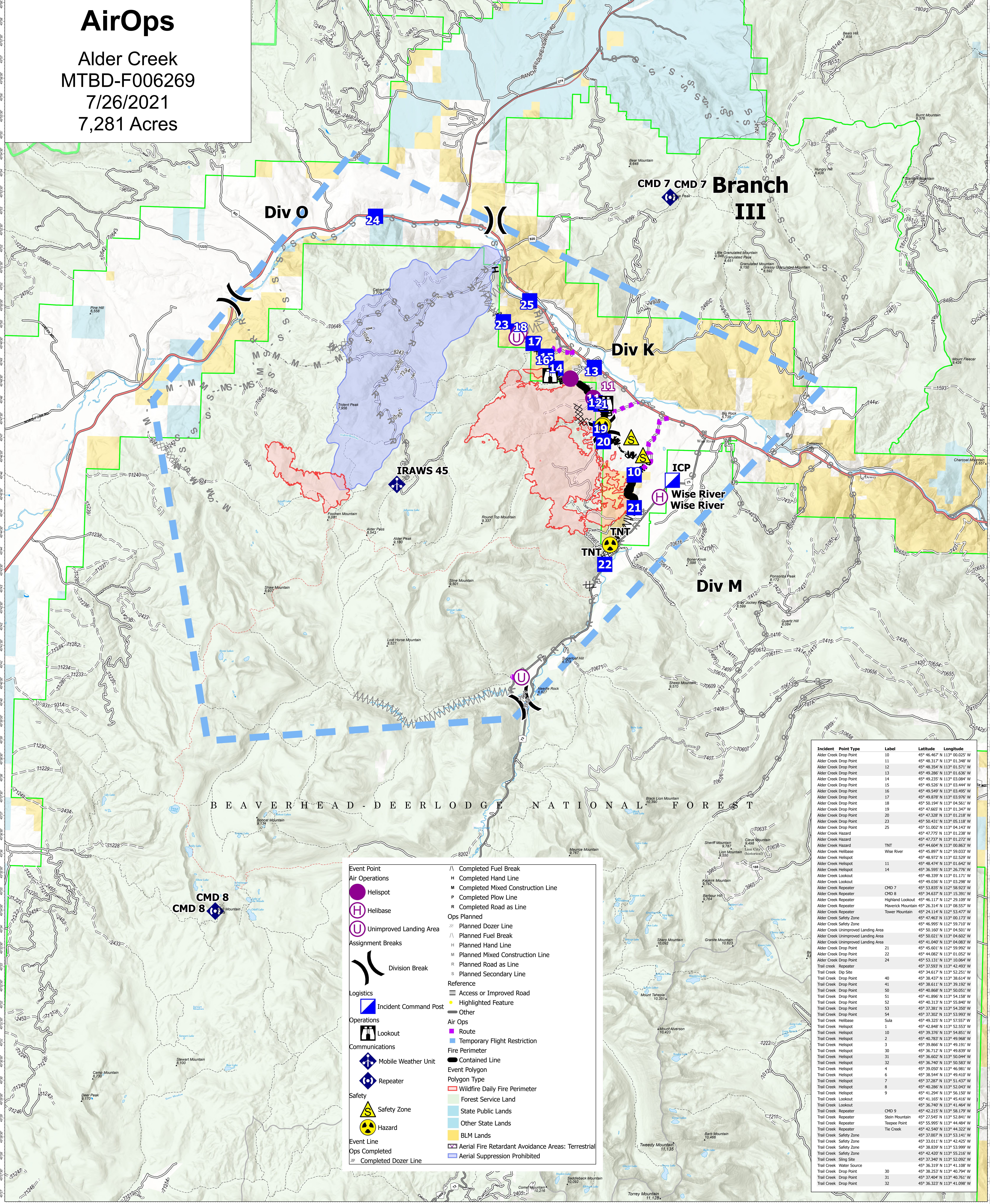


# AirOps

Alder Creek  
MTBD-F006269  
7/26/2021  
7,281 Acres



Incident	Point Type	Label	Latitude	Longitude
Alder Creek Drop Point	10		45° 46.467' N 113° 00.025' W	
Alder Creek Drop Point	11		45° 48.317' N 113° 01.348' W	
Alder Creek Drop Point	12		45° 48.354' N 113° 01.571' W	
Alder Creek Drop Point	13		45° 49.285' N 113° 01.636' W	
Alder Creek Drop Point	14		45° 49.235' N 113° 03.084' W	
Alder Creek Drop Point	15		45° 49.526' N 113° 03.444' W	
Alder Creek Drop Point	16		45° 49.549' N 113° 03.495' W	
Alder Creek Drop Point	17		45° 49.878' N 113° 03.576' W	
Alder Creek Drop Point	18		45° 49.891' N 113° 04.561' W	
Alder Creek Drop Point	19		45° 47.665' N 113° 01.347' W	
Alder Creek Drop Point	20		45° 47.328' N 113° 01.218' W	
Alder Creek Drop Point	23		45° 50.431' N 113° 05.118' W	
Alder Creek Drop Point	25		45° 51.002' N 113° 04.143' W	
Alder Creek Hazard			45° 47.775' N 113° 01.238' W	
Alder Creek Hazard			45° 47.737' N 113° 01.272' W	
Alder Creek Hazard		TNT	45° 44.604' N 113° 00.863' W	
Alder Creek Helibase		Wise River	45° 45.897' N 112° 59.033' W	
Alder Creek Helispot			45° 48.972' N 113° 02.529' W	
Alder Creek Helispot	11		45° 48.285' N 113° 01.642' W	
Alder Creek Helispot	14		45° 36.595' N 113° 26.776' W	
Alder Creek Helispot	14		45° 48.339' N 113° 01.171' W	
Alder Creek Helispot	14		45° 49.036' N 113° 03.298' W	
Alder Creek Repeater		CMD 7	45° 53.835' N 113° 06.173' W	
Alder Creek Repeater		CMD 8	45° 54.631' N 113° 15.391' W	
Alder Creek Repeater		Highland Lookout	45° 46.117' N 113° 29.109' W	
Alder Creek Repeater		Maverick Mountain	45° 26.314' N 113° 08.557' W	
Alder Creek Repeater		Tower Mountain	45° 24.114' N 112° 53.477' W	
Alder Creek Safety Zone			45° 47.463' N 113° 06.173' W	
Alder Creek Safety Zone			45° 46.995' N 112° 59.710' W	
Alder Creek Unimproved Landing Area			45° 50.160' N 113° 04.501' W	
Alder Creek Unimproved Landing Area			45° 50.021' N 113° 04.602' W	
Alder Creek Unimproved Landing Area			45° 41.040' N 113° 04.083' W	
Alder Creek Drop Point	21		45° 45.601' N 113° 59.592' W	
Alder Creek Drop Point	22		45° 44.082' N 113° 01.052' W	
Alder Creek Drop Point	24		45° 53.131' N 113° 10.064' W	
Trail Creek Repeater			45° 37.593' N 113° 42.493' W	
Trail Creek Dip Site			45° 34.617' N 113° 52.251' W	
Trail Creek Drop Point	40		45° 38.437' N 113° 38.514' W	
Trail Creek Drop Point	41		45° 38.611' N 113° 39.182' W	
Trail Creek Drop Point	50		45° 40.868' N 113° 50.051' W	
Trail Creek Drop Point	51		45° 41.896' N 113° 54.158' W	
Trail Creek Drop Point	52		45° 40.313' N 113° 55.840' W	
Trail Creek Drop Point	53		45° 37.381' N 113° 54.550' W	
Trail Creek Drop Point	54		45° 37.302' N 113° 53.993' W	
Trail Creek Helibase		Sula	45° 49.325' N 113° 57.557' W	
Trail Creek Helispot	1		45° 42.848' N 113° 52.553' W	
Trail Creek Helispot	10		45° 39.376' N 113° 54.851' W	
Trail Creek Helispot	2		45° 40.763' N 113° 49.568' W	
Trail Creek Helispot	3		45° 39.866' N 113° 49.191' W	
Trail Creek Helispot	30		45° 36.712' N 113° 49.839' W	
Trail Creek Helispot	31		45° 36.602' N 113° 50.044' W	
Trail Creek Helispot	32		45° 36.740' N 113° 50.583' W	
Trail Creek Helispot	4		45° 39.055' N 113° 45.881' W	
Trail Creek Helispot	6		45° 38.544' N 113° 49.810' W	
Trail Creek Helispot	7		45° 37.287' N 113° 51.437' W	
Trail Creek Helispot	8		45° 40.286' N 113° 52.043' W	
Trail Creek Helispot	9		45° 41.294' N 113° 56.150' W	
Trail Creek Lookout			45° 41.155' N 113° 45.161' W	
Trail Creek Repeater		CMD 9	45° 42.215' N 113° 58.179' W	
Trail Creek Repeater		Stein Mountain	45° 27.545' N 113° 52.841' W	
Trail Creek Repeater		Teepee Point	45° 55.995' N 113° 44.484' W	
Trail Creek Repeater		Tie Creek	45° 42.545' N 113° 44.322' W	
Trail Creek Safety Zone			45° 37.007' N 113° 53.141' W	
Trail Creek Safety Zone			45° 33.011' N 113° 42.425' W	
Trail Creek Safety Zone			45° 38.839' N 113° 53.999' W	
Trail Creek Safety Zone			45° 42.420' N 113° 55.216' W	
Trail Creek Sing Site			45° 37.346' N 113° 52.502' W	
Trail Creek Water Source			45° 36.319' N 113° 41.108' W	
Trail Creek Drop Point	30		45° 38.253' N 113° 40.794' W	
Trail Creek Drop Point	31		45° 37.404' N 113° 40.761' W	
Trail Creek Drop Point	32		45° 36.323' N 113° 41.098' W	

**Event Point**

- Helispot
- Helibase
- Unimproved Landing Area

**Assignment Breaks**

- Division Break

**Logistics**

- Incident Command Post
- Lookout
- Mobile Weather Unit
- Repeater

**Safety**

- Safety Zone
- Hazard

**Event Line**

- Ops Completed
- Completed Dozer Line

**Other Symbols**

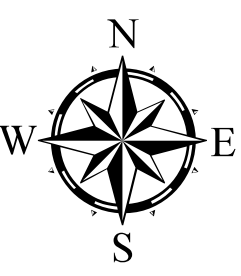
- Completed Fuel Break
- Completed Hand Line
- Completed Mixed Construction Line
- Completed Plow Line
- Completed Road as Line
- Planned Dozer Line
- Planned Fuel Break
- Planned Hand Line
- Planned Mixed Construction Line
- Planned Road as Line
- Planned Secondary Line
- Access or Improved Road
- Highlighted Feature
- Other
- Route
- Temporary Flight Restriction
- Contained Line
- Event Polygon
- Polygon Type
- Wildfire Daily Fire Perimeter
- Forest Service Land
- State Public Lands
- Other State Lands
- BLM Lands
- Aerial Fire Retardant Avoidance Areas: Terrestrial
- Aerial Suppression Prohibited

### Flight Restriction Information

Alder Creek - 1/2315 - 12,500ft ceiling  
Trail Creek - 1/2310 - 12,500ft ceiling



SW Team 1  
7/25/2021 2043  
North American 1983 Datum. LatLong Grid



Fire perimeter updated from  
Acres from IR on 07/24/21 22:22

0 1 2 3 4 Miles  
Scale: 1:54,688