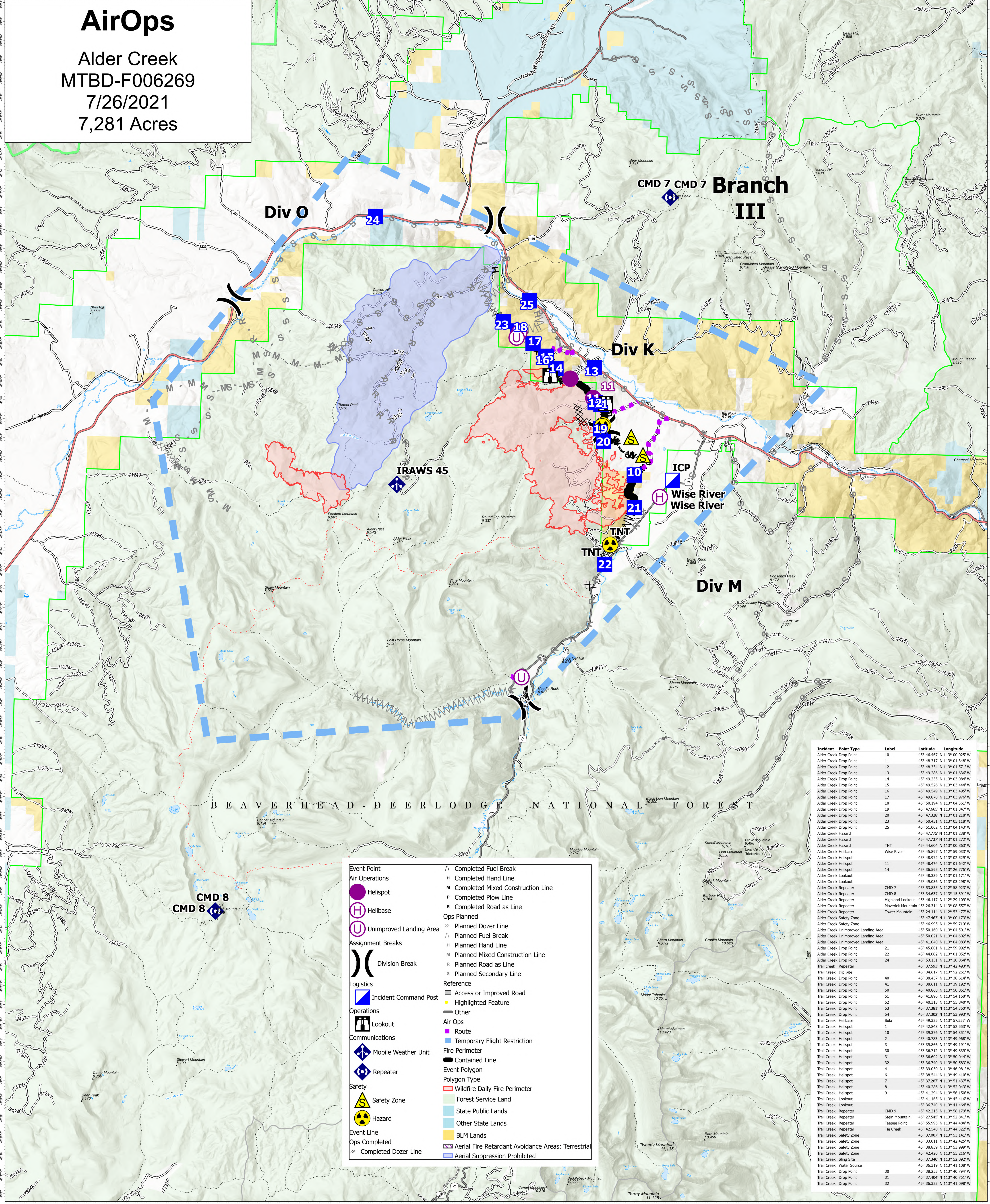


AirOps

Alder Creek
MTBD-F006269
7/26/2021
7,281 Acres



BEAVERHEAD - DEER LODGE NATIONAL FOREST

Symbol	Description
●	Event Point
○	Air Operations
○	Helispot
○	Helibase
○	Unimproved Landing Area
	Assignment Breaks
	Division Break
□	Logistics
□	Incident Command Post
□	Operations
□	Lookout
□	Communications
□	Mobile Weather Unit
□	Repeater
□	Safety
□	Safety Zone
□	Hazard
□	Event Line
□	Ops Completed
□	Completed Dozer Line
□	Completed Fuel Break
□	Completed Hand Line
□	Completed Mixed Construction Line
□	Completed Plow Line
□	Completed Road as Line
□	Ops Planned
□	Planned Dozer Line
□	Planned Fuel Break
□	Planned Hand Line
□	Planned Mixed Construction Line
□	Planned Road as Line
□	Planned Secondary Line
□	Reference
□	Access or Improved Road
□	Highlighted Feature
□	Other
□	Air Ops
□	Temporary Flight Restriction
□	Fire Perimeter
□	Contained Line
□	Event Polygon
□	Wildfire Daily Fire Perimeter
□	Forest Service Land
□	State Public Lands
□	Other State Lands
□	BLM Lands
□	Aerial Fire Retardant Avoidance Areas: Terrestrial
□	Aerial Suppression Prohibited

Incident	Point Type	Label	Latitude	Longitude
Alder Creek Drop Point	10		45° 46.467' N 113° 00.025' W	
Alder Creek Drop Point	11		45° 48.317' N 113° 01.348' W	
Alder Creek Drop Point	12		45° 48.354' N 113° 01.571' W	
Alder Creek Drop Point	13		45° 49.285' N 113° 01.636' W	
Alder Creek Drop Point	14		45° 49.235' N 113° 03.084' W	
Alder Creek Drop Point	15		45° 49.526' N 113° 03.444' W	
Alder Creek Drop Point	16		45° 49.549' N 113° 03.495' W	
Alder Creek Drop Point	17		45° 49.878' N 113° 03.576' W	
Alder Creek Drop Point	18		45° 50.191' N 113° 04.561' W	
Alder Creek Drop Point	19		45° 47.665' N 113° 01.347' W	
Alder Creek Drop Point	20		45° 47.328' N 113° 01.218' W	
Alder Creek Drop Point	23		45° 50.431' N 113° 05.118' W	
Alder Creek Drop Point	25		45° 51.002' N 113° 04.143' W	
Alder Creek Hazard			45° 47.773' N 113° 01.238' W	
Alder Creek Hazard		TNT	45° 47.737' N 113° 01.272' W	
Alder Creek Hazard		Wise River	45° 44.604' N 113° 00.863' W	
Alder Creek Helibase		Wise River	45° 45.897' N 113° 59.033' W	
Alder Creek Helispot			45° 48.972' N 113° 02.529' W	
Alder Creek Helispot	11		45° 48.478' N 113° 01.642' W	
Alder Creek Helispot	14		45° 36.595' N 113° 26.776' W	
Alder Creek Lookout			45° 48.339' N 113° 01.171' W	
Alder Creek Lookout			45° 49.036' N 113° 03.298' W	
Alder Creek Repeater		CMD 7	45° 53.835' N 113° 58.992' W	
Alder Creek Repeater		CMD 8	45° 34.637' N 113° 15.911' W	
Alder Creek Repeater		Highland Lookout	45° 46.117' N 112° 29.109' W	
Alder Creek Repeater		Maverick Lookout	45° 26.314' N 113° 08.557' W	
Alder Creek Repeater		Tower Mountain	45° 24.114' N 112° 53.477' W	
Alder Creek Safety Zone			45° 47.463' N 113° 00.173' W	
Alder Creek Unimproved Landing Area			45° 46.995' N 113° 59.238' W	
Alder Creek Unimproved Landing Area			45° 50.160' N 113° 04.501' W	
Alder Creek Unimproved Landing Area			45° 50.021' N 113° 04.602' W	
Alder Creek Unimproved Landing Area			45° 41.040' N 113° 04.683' W	
Alder Creek Drop Point	21		45° 45.601' N 113° 59.992' W	
Alder Creek Drop Point	22		45° 44.082' N 113° 01.052' W	
Alder Creek Drop Point	24		45° 53.131' N 113° 10.064' W	
Trail Creek Repeater			45° 37.593' N 113° 42.493' W	
Trail Creek Dip Site			45° 34.617' N 113° 52.251' W	
Trail Creek Drop Point	40		45° 38.437' N 113° 38.314' W	
Trail Creek Drop Point	41		45° 38.611' N 113° 39.192' W	
Trail Creek Drop Point	50		45° 40.868' N 113° 50.511' W	
Trail Creek Drop Point	51		45° 41.896' N 113° 54.158' W	
Trail Creek Drop Point	52		45° 40.313' N 113° 55.840' W	
Trail Creek Drop Point	53		45° 37.381' N 113° 54.550' W	
Trail Creek Drop Point	54		45° 37.302' N 113° 53.993' W	
Trail Creek Helibase		Sula	45° 49.325' N 113° 57.557' W	
Trail Creek Helispot	1		45° 42.848' N 113° 52.553' W	
Trail Creek Helispot	10		45° 39.376' N 113° 54.851' W	
Trail Creek Helispot	2		45° 40.868' N 113° 49.968' W	
Trail Creek Helispot	3		45° 39.866' N 113° 49.191' W	
Trail Creek Helispot	30		45° 36.712' N 113° 49.839' W	
Trail Creek Helispot	31		45° 36.602' N 113° 50.044' W	
Trail Creek Helispot	32		45° 36.740' N 113° 50.583' W	
Trail Creek Helispot	4		45° 39.059' N 113° 48.881' W	
Trail Creek Helispot	6		45° 38.544' N 113° 49.810' W	
Trail Creek Helispot	7		45° 37.287' N 113° 51.437' W	
Trail Creek Helispot	8		45° 40.286' N 113° 52.043' W	
Trail Creek Helispot	9		45° 41.294' N 113° 56.150' W	
Trail Creek Lookout			45° 41.165' N 113° 45.416' W	
Trail Creek Lookout			45° 36.740' N 113° 41.464' W	
Trail Creek Repeater		CMD 9	45° 42.215' N 113° 58.179' W	
Trail Creek Repeater		Stein Mountain	45° 27.545' N 113° 52.841' W	
Trail Creek Repeater		Teepee Point	45° 55.995' N 113° 44.484' W	
Trail Creek Repeater		Tie Creek	45° 42.545' N 113° 44.322' W	
Trail Creek Safety Zone			45° 37.007' N 113° 53.141' W	
Trail Creek Safety Zone			45° 33.011' N 113° 42.425' W	
Trail Creek Safety Zone			45° 38.839' N 113° 53.999' W	
Trail Creek Safety Zone			45° 42.420' N 113° 55.216' W	
Trail Creek Sing Site			45° 37.348' N 113° 52.902' W	
Trail Creek Water Source			45° 36.319' N 113° 41.108' W	
Trail Creek Drop Point	30		45° 38.253' N 113° 40.794' W	
Trail Creek Drop Point	31		45° 37.404' N 113° 40.761' W	
Trail Creek Drop Point	32		45° 36.323' N 113° 41.098' W	

Flight Restriction Information

Alder Creek - 1/2315 - 12,500ft ceiling
Trail Creek - 1/2310 - 12,500ft ceiling



Fire perimeter updated from Acres from IR on 07/24/21 22:22

0 1 2 3 4 Miles
1 inch equals 1 mile
Scale: 1:54,688



SW Team 1
7/25/2021 2037
North American 1983 Datum. LatLong Grid