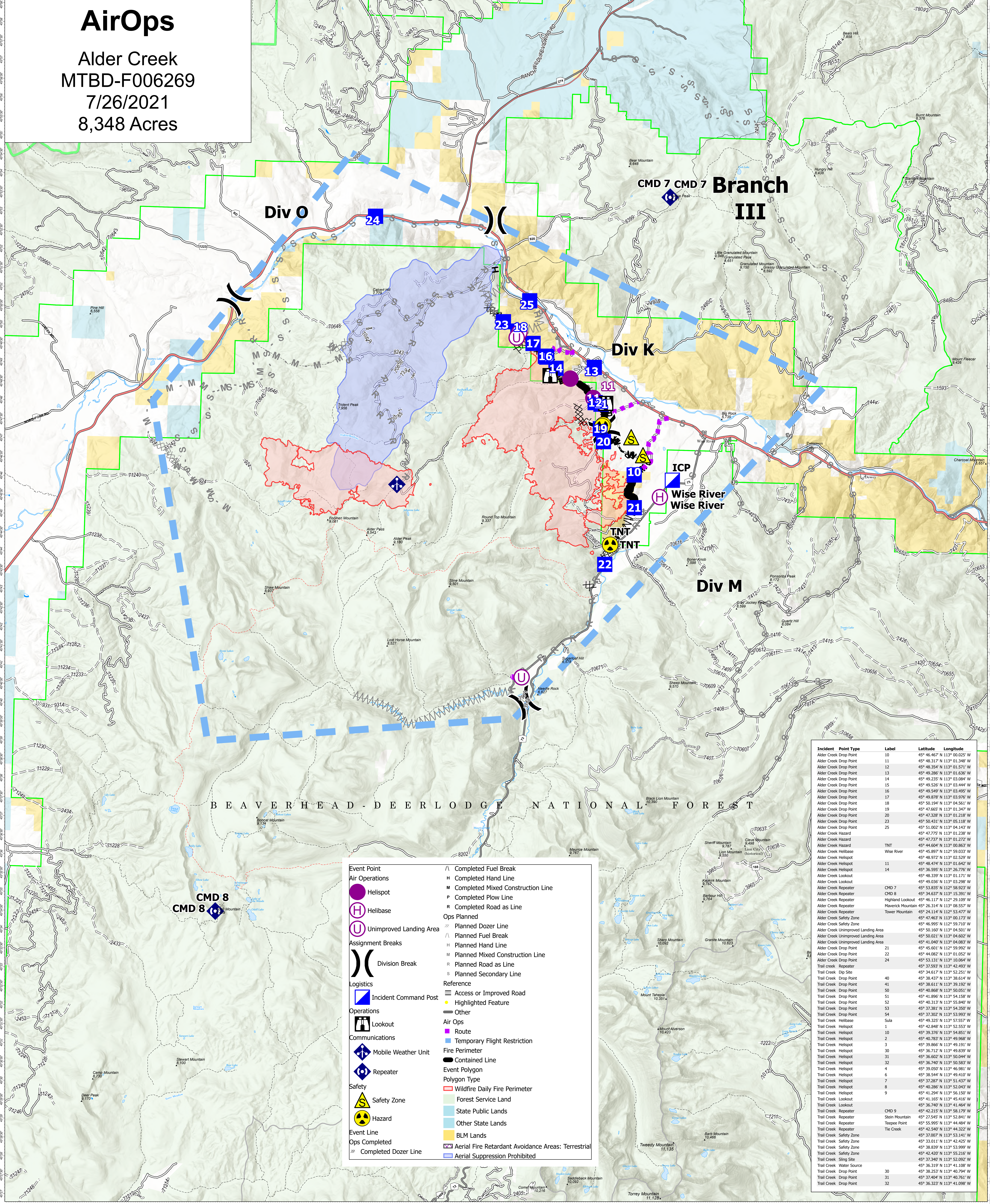


AirOps

Alder Creek
MTBD-F006269
7/26/2021
8,348 Acres

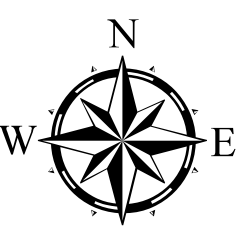


Incident	Point Type	Label	Latitude	Longitude
Alder Creek Drop Point	10		45° 46.467' N 113° 00.025' W	
Alder Creek Drop Point	11		45° 48.317' N 113° 01.348' W	
Alder Creek Drop Point	12		45° 48.354' N 113° 01.571' W	
Alder Creek Drop Point	13		45° 49.285' N 113° 01.636' W	
Alder Creek Drop Point	14		45° 49.235' N 113° 03.084' W	
Alder Creek Drop Point	15		45° 49.526' N 113° 03.444' W	
Alder Creek Drop Point	16		45° 49.549' N 113° 03.495' W	
Alder Creek Drop Point	17		45° 49.878' N 113° 03.576' W	
Alder Creek Drop Point	18		45° 49.891' N 113° 04.561' W	
Alder Creek Drop Point	19		45° 47.665' N 113° 01.347' W	
Alder Creek Drop Point	20		45° 47.328' N 113° 01.218' W	
Alder Creek Drop Point	23		45° 50.431' N 113° 05.118' W	
Alder Creek Drop Point	25		45° 51.002' N 113° 04.143' W	
Alder Creek Hazard			45° 47.775' N 113° 01.238' W	
Alder Creek Hazard			45° 47.737' N 113° 01.272' W	
Alder Creek Hazard		TNT	45° 44.604' N 113° 00.863' W	
Alder Creek Helibase		Wise River	45° 45.897' N 112° 59.033' W	
Alder Creek Helispot			45° 48.972' N 113° 03.529' W	
Alder Creek Helispot	11		45° 49.285' N 113° 01.636' W	
Alder Creek Helispot	14		45° 36.595' N 113° 26.776' W	
Alder Creek Lookout			45° 48.339' N 113° 01.171' W	
Alder Creek Lookout			45° 49.036' N 113° 03.298' W	
Alder Creek Repeater		CMD 7	45° 53.835' N 113° 06.173' W	
Alder Creek Repeater		CMD 8	45° 54.637' N 113° 15.391' W	
Alder Creek Repeater		Highland Lookout	45° 46.117' N 112° 29.109' W	
Alder Creek Repeater		Maverick Mountain	45° 26.314' N 113° 08.557' W	
Alder Creek Repeater		Tower Mountain	45° 24.114' N 112° 53.477' W	
Alder Creek Safety Zone			45° 47.463' N 113° 06.173' W	
Alder Creek Safety Zone			45° 49.995' N 112° 59.710' W	
Alder Creek Unimproved Landing Area			45° 50.160' N 113° 04.501' W	
Alder Creek Unimproved Landing Area			45° 50.021' N 113° 04.602' W	
Alder Creek Unimproved Landing Area			45° 41.040' N 113° 04.683' W	
Alder Creek Drop Point	21		45° 45.601' N 113° 05.592' W	
Alder Creek Drop Point	22		45° 44.082' N 113° 01.052' W	
Alder Creek Drop Point	24		45° 53.131' N 113° 10.064' W	
Trail Creek Repeater			45° 37.593' N 113° 42.493' W	
Trail Creek Dip Site			45° 34.617' N 113° 52.251' W	
Trail Creek Drop Point	40		45° 38.437' N 113° 38.514' W	
Trail Creek Drop Point	41		45° 38.611' N 113° 39.182' W	
Trail Creek Drop Point	50		45° 40.868' N 113° 50.051' W	
Trail Creek Drop Point	51		45° 41.896' N 113° 54.158' W	
Trail Creek Drop Point	52		45° 40.313' N 113° 55.840' W	
Trail Creek Drop Point	53		45° 37.381' N 113° 54.550' W	
Trail Creek Drop Point	54		45° 37.302' N 113° 53.993' W	
Trail Creek Helibase		Sula	45° 49.325' N 113° 57.557' W	
Trail Creek Helispot	1		45° 42.848' N 113° 52.553' W	
Trail Creek Helispot	10		45° 39.376' N 113° 54.851' W	
Trail Creek Helispot	2		45° 42.763' N 113° 49.568' W	
Trail Creek Helispot	3		45° 40.866' N 113° 49.191' W	
Trail Creek Helispot	30		45° 36.712' N 113° 49.839' W	
Trail Creek Helispot	31		45° 36.602' N 113° 50.044' W	
Trail Creek Helispot	32		45° 36.420' N 113° 50.583' W	
Trail Creek Helispot	4		45° 39.050' N 113° 46.881' W	
Trail Creek Helispot	6		45° 38.544' N 113° 49.810' W	
Trail Creek Helispot	7		45° 37.287' N 113° 51.437' W	
Trail Creek Helispot	8		45° 40.286' N 113° 52.043' W	
Trail Creek Helispot	9		45° 41.294' N 113° 56.150' W	
Trail Creek Lookout			45° 41.165' N 113° 45.416' W	
Trail Creek Lookout			45° 36.740' N 113° 41.464' W	
Trail Creek Repeater		CMD 9	45° 42.215' N 113° 58.179' W	
Trail Creek Repeater		Stein Mountain	45° 27.545' N 113° 52.841' W	
Trail Creek Repeater		Teepee Point	45° 55.995' N 113° 44.484' W	
Trail Creek Repeater			45° 42.545' N 113° 44.322' W	
Trail Creek Safety Zone			45° 37.007' N 113° 53.141' W	
Trail Creek Safety Zone			45° 33.011' N 113° 42.425' W	
Trail Creek Safety Zone			45° 38.839' N 113° 53.999' W	
Trail Creek Safety Zone			45° 42.420' N 113° 55.216' W	
Trail Creek Sing Site			45° 37.346' N 113° 52.502' W	
Trail Creek Water Source			45° 36.319' N 113° 41.108' W	
Trail Creek Drop Point	30		45° 38.253' N 113° 40.794' W	
Trail Creek Drop Point	31		45° 37.404' N 113° 40.761' W	
Trail Creek Drop Point	32		45° 36.323' N 113° 41.098' W	

Event Point	Assignment Breaks	Logistics	Operations	Communications	Safety	Event Line
Helispot	Division Break	Incident Command Post	Lookout	Mobile Weather Unit	Safety Zone	Completed Dozer Line
Helibase	Completed Fuel Break	Completed Fuel Break	Completed Hand Line	Repeater	Hazard	Completed Dozer Line
Unimproved Landing Area	Completed Mixed Construction Line	Completed Fuel Break	Completed Hand Line			
	Completed Plov Line	Planned Fuel Break	Planned Hand Line			
	Completed Road as Line	Planned Mixed Construction Line	Planned Hand Line			
	Ops Planned	Planned Fuel Break	Planned Hand Line			
	Planned Dozer Line	Planned Secondary Line	Planned Secondary Line			
	Completed Fuel Break	Access or Improved Road	Highlighted Feature			
	Completed Hand Line	Other	Other			
	Completed Mixed Construction Line	Air Ops	Air Ops			
	Completed Plov Line	Temporary Flight Restriction	Temporary Flight Restriction			
	Completed Road as Line	Contained Line	Contained Line			
	Ops Planned	Event Polygon	Event Polygon			
	Planned Fuel Break	Wildfire Daily Fire Perimeter	Wildfire Daily Fire Perimeter			
	Planned Hand Line	Forest Service Land	Forest Service Land			
	Planned Mixed Construction Line	State Public Lands	State Public Lands			
	Planned Road as Line	Other State Lands	Other State Lands			
	Planned Secondary Line	BLM Lands	BLM Lands			
	Reference	Aerial Fire Retardant Avoidance Areas: Terrestrial	Aerial Fire Retardant Avoidance Areas: Terrestrial			
	Access or Improved Road	Aerial Suppression Prohibited	Aerial Suppression Prohibited			
	Highlighted Feature					
	Other					
	Air Ops					
	Temporary Flight Restriction					
	Contained Line					
	Event Polygon					
	Wildfire Daily Fire Perimeter					
	Forest Service Land					
	State Public Lands					
	Other State Lands					
	BLM Lands					
	Aerial Fire Retardant Avoidance Areas: Terrestrial					
	Aerial Suppression Prohibited					

Flight Restriction Information

Alder Creek - 1/2315 - 12,500ft ceiling
Trail Creek - 1/2310 - 12,500ft ceiling



Fire perimeter updated from
Acres from IR on 07/25/21 22:40

0 1 2 3 4 Miles
Scale: 1:54,688
1 inch equals 1 mile



SW Team 1
7/26/2021 0808
North American 1983 Datum. LatLong Grid