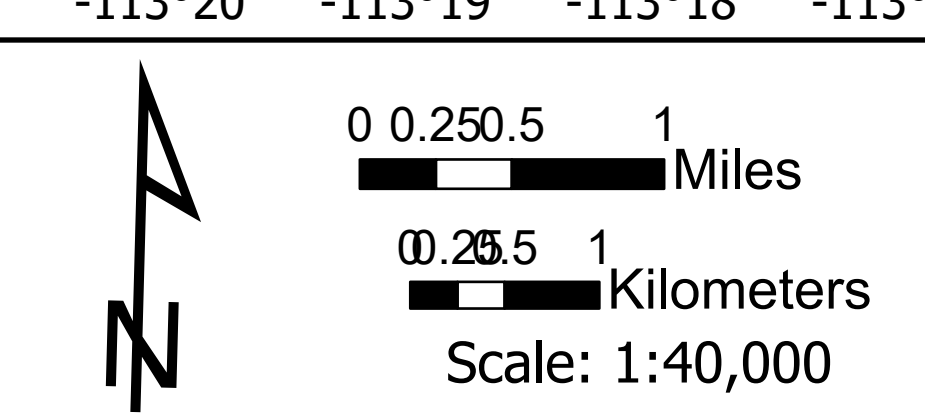


Alder Creek Incident Briefing
 MTBD-F006269
 Christensen Incident Briefing
 MTBDF-006298
 Day Operational Period 7/26/2021

Alder Creek GIS Acres 8,348
 07/25/21 22:40
 Acres from IR
 Christensen GIS Acres 4,070
 07/25/21 22:40
 Acres from IR
 NAD 1983 UTM Zone 12N



● Helispot	□ Lookout	○ Fence - Cut/Damaged	⊗ Completed Dozer Line	⊗ Planned Dozer Line	⊗ Access or Improved Road	⊗ Contained Line	⊗ Bureau of Land Management Lands
○ Helibase	○ Value at Risk	○ Clean Up Area	⊗ Completed Fuel Break	⊗ Planned Fuel Break	⊗ Highlighted Feature	⊗ Wildfire Daily Fire Perimeter	
○ Unimproved Landing Area	○ Other	○ Mobile Weather Unit	⊗ Completed Hand Line	⊗ Planned Hand Line	⊗ Other	⊗ Fire History 2000 - Current	
⊗ Division Break	○ Gate	○ Repairer	⊗ Completed Mixed Construction Line	⊗ Planned Mixed Construction Line	⊗ Route	⊗ Forest Service Land	
⊗ Incident Command Post	○ Repair Point	○ Safety Zone	⊗ Completed Power Line	⊗ Planned Power as Line	⊗ Temporary Flight Restriction	⊗ State Public Lands	
○ Drop Point	○ Landing or Log Deck	○ Hazard	⊗ Completed Road as Line	⊗ Planned Secondary Line	⊗ Fire Edge	⊗ Other State Lands	

07/25/21 22:40
 ● IR Isolated Heat Source
 ● Possible IR Heat Source
 ○ IR Heat Perimeter
 ○ IR Intense Heat
 ○ IR Scattered Heat

