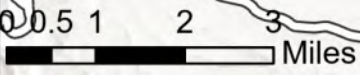
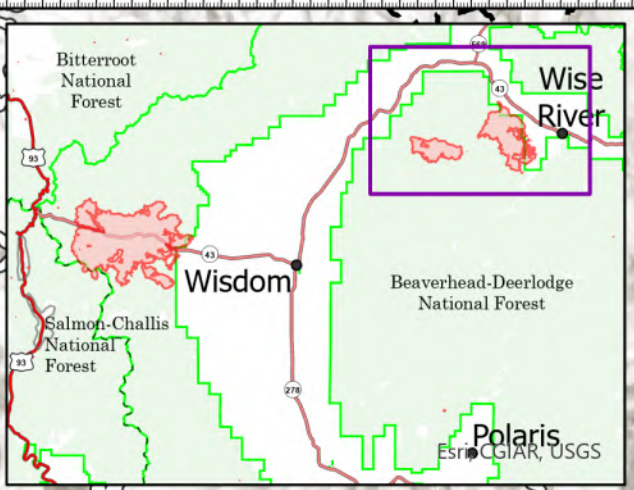


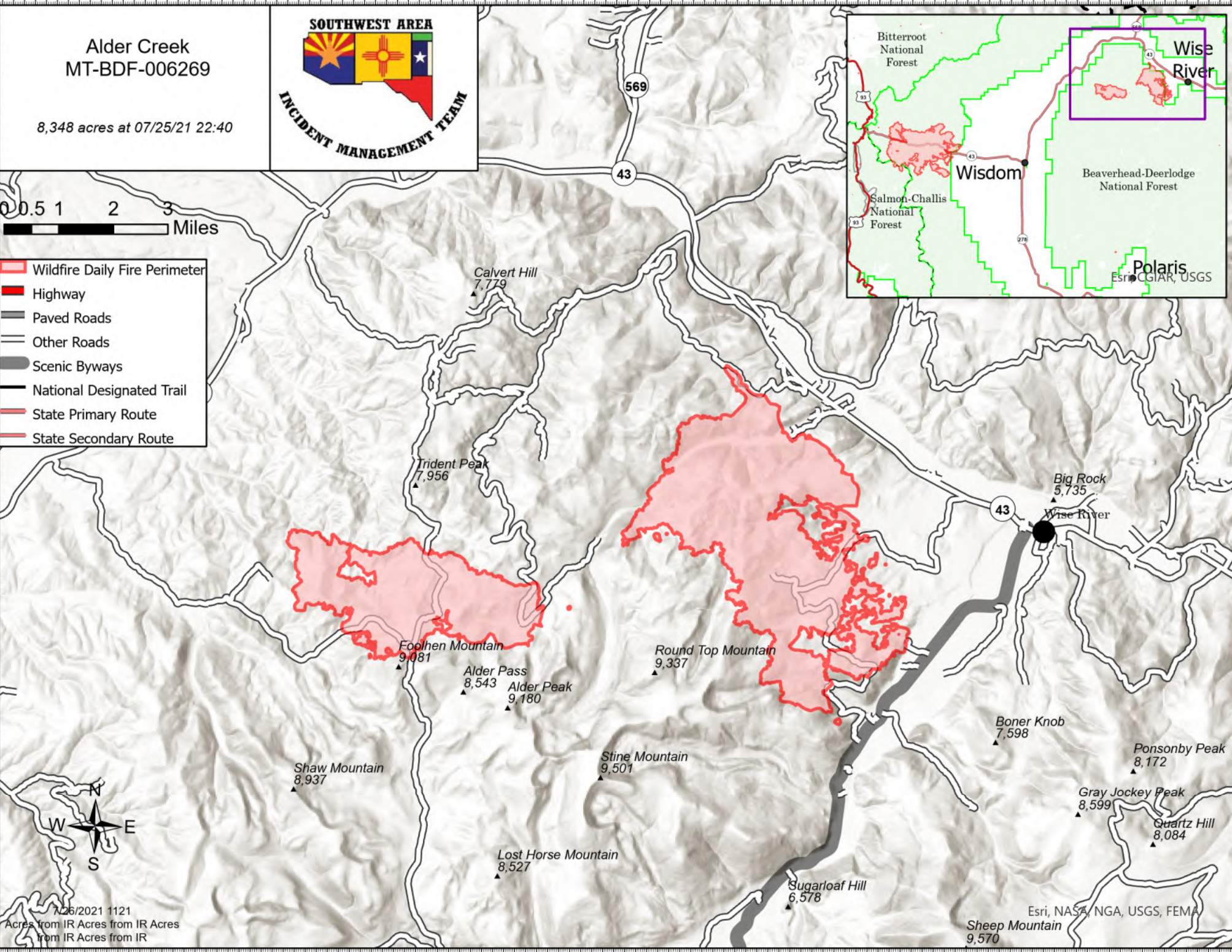
113°21.01'W 113°19'W 113°17.5'W 113°16'W 113°14.5'W 113°13'W 113°11.5'W 113°10'W 113°8.5'W 113°7'W 113°5.5'W 113°4'W 113°2.5'W 113°1'W 112°59.5'W 112°58'W 112°56.5'W 112°55'W 112°53.5'W

Alder Creek
MT-BDF-006269

8,348 acres at 07/25/21 22:40



- Wildfire Daily Fire Perimeter
- Highway
- Paved Roads
- Other Roads
- Scenic Byways
- National Designated Trail
- State Primary Route
- State Secondary Route



7/26/2021 1121
Acres from IR Acres from IR Acres
from IR Acres from IR

Esri, NASA, NGA, USGS, FEMA
Sheep Mountain 9,570

113°20'W 113°18.5'W 113°17'W 113°15.5'W 113°14'W 113°12.5'W 113°11'W 113°9.5'W 113°8'W 113°6.5'W 113°5'W 113°3.5'W 113°2'W 113°0.5'W 112°59'W 112°57.5'W 112°56'W 112°54.5'W 112°53'W