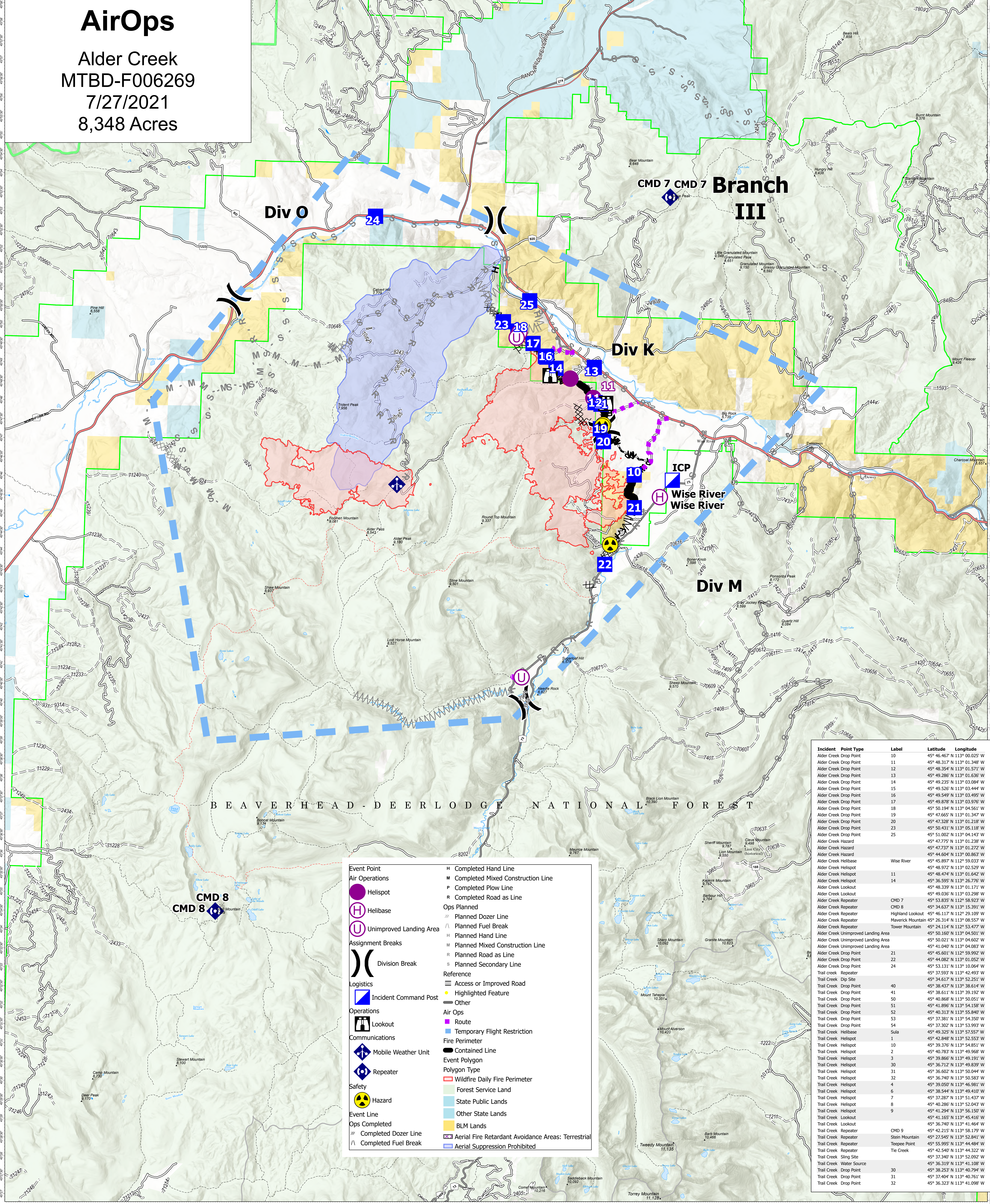


# AirOps

Alder Creek  
MTBD-F006269  
7/27/2021  
8,348 Acres

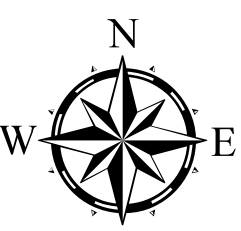


Incident	Point Type	Label	Latitude	Longitude
Alder Creek Drop Point	10		45° 46.467' N	113° 00.025' W
Alder Creek Drop Point	11		45° 48.317' N	113° 01.348' W
Alder Creek Drop Point	12		45° 48.354' N	113° 01.571' W
Alder Creek Drop Point	13		45° 49.286' N	113° 01.636' W
Alder Creek Drop Point	14		45° 49.235' N	113° 03.084' W
Alder Creek Drop Point	15		45° 49.538' N	113° 03.444' W
Alder Creek Drop Point	16		45° 49.549' N	113° 03.495' W
Alder Creek Drop Point	17		45° 49.878' N	113° 03.976' W
Alder Creek Drop Point	18		45° 50.194' N	113° 04.561' W
Alder Creek Drop Point	19		45° 47.665' N	113° 01.347' W
Alder Creek Drop Point	20		45° 47.328' N	113° 01.218' W
Alder Creek Drop Point	23		45° 50.431' N	113° 05.118' W
Alder Creek Drop Point	25		45° 51.002' N	113° 04.143' W
Alder Creek Hazard	15		45° 47.775' N	113° 01.238' W
Alder Creek Hazard			45° 47.737' N	113° 01.272' W
Alder Creek Hazard			45° 44.604' N	113° 00.863' W
Alder Creek Helibase		Wise River	45° 45.897' N	112° 59.033' W
Alder Creek Helispot			45° 48.972' N	113° 02.529' W
Alder Creek Helispot			45° 48.474' N	113° 01.642' W
Alder Creek Helispot	11		45° 48.474' N	113° 01.642' W
Alder Creek Helispot	14		45° 48.474' N	113° 01.642' W
Alder Creek Helispot	14		45° 36.595' N	113° 26.776' W
Alder Creek Lookout			45° 49.339' N	113° 03.171' W
Alder Creek Lookout			45° 49.036' N	113° 03.298' W
Alder Creek Repeater	CMD 7		45° 53.835' N	112° 58.923' W
Alder Creek Repeater	CMD 8		45° 34.637' N	113° 15.391' W
Alder Creek Repeater		Highland Lookout	45° 46.117' N	112° 29.109' W
Alder Creek Repeater		Maverick Mountain	45° 26.314' N	113° 08.557' W
Alder Creek Repeater		Tower Mountain	45° 24.114' N	112° 53.477' W
Alder Creek Unimproved Landing Area			45° 50.160' N	113° 05.501' W
Alder Creek Unimproved Landing Area			45° 50.021' N	113° 04.602' W
Alder Creek Unimproved Landing Area			45° 41.040' N	113° 04.063' W
Alder Creek Drop Point	21		45° 45.601' N	112° 59.992' W
Alder Creek Drop Point	22		45° 44.082' N	113° 01.052' W
Alder Creek Drop Point	24		45° 53.131' N	113° 10.064' W
Trail Creek Repeater			45° 37.593' N	113° 42.493' W
Trail Creek Dip Site			45° 34.617' N	113° 52.251' W
Trail Creek Drop Point	40		45° 38.437' N	113° 38.614' W
Trail Creek Drop Point	41		45° 38.611' N	113° 39.192' W
Trail Creek Drop Point	50		45° 40.868' N	113° 50.051' W
Trail Creek Drop Point	51		45° 41.896' N	113° 54.158' W
Trail Creek Drop Point	52		45° 40.313' N	113° 55.840' W
Trail Creek Drop Point	53		45° 37.381' N	113° 54.350' W
Trail Creek Drop Point	54		45° 37.302' N	113° 53.993' W
Trail Creek Helibase		Sula	45° 49.325' N	113° 57.557' W
Trail Creek Helispot	1		45° 39.548' N	113° 52.523' W
Trail Creek Helispot	10		45° 39.376' N	113° 54.821' W
Trail Creek Helispot	2		45° 40.783' N	113° 49.968' W
Trail Creek Helispot	3		45° 39.866' N	113° 49.191' W
Trail Creek Helispot	30		45° 36.712' N	113° 49.839' W
Trail Creek Helispot	31		45° 36.602' N	113° 50.044' W
Trail Creek Helispot	32		45° 36.740' N	113° 50.583' W
Trail Creek Helispot	4		45° 39.050' N	113° 46.981' W
Trail Creek Helispot	6		45° 38.544' N	113° 49.410' W
Trail Creek Helispot	7		45° 37.287' N	113° 51.437' W
Trail Creek Helispot	8		45° 40.286' N	113° 52.043' W
Trail Creek Helispot	9		45° 41.294' N	113° 56.150' W
Trail Creek Lookout			45° 41.165' N	113° 45.416' W
Trail Creek Lookout			45° 36.740' N	113° 41.464' W
Trail Creek Repeater	CMD 9		45° 42.215' N	113° 58.179' W
Trail Creek Repeater		Steen Mountain	45° 37.945' N	113° 52.841' W
Trail Creek Repeater		Teesee Point	45° 55.995' N	113° 44.484' W
Trail Creek Repeater		Tie Creek	45° 42.540' N	113° 44.322' W
Trail Creek Sling Site			45° 37.340' N	113° 52.092' W
Trail Creek Water Source			45° 36.319' N	113° 41.108' W
Trail Creek Drop Point	30		45° 38.253' N	113° 40.794' W
Trail Creek Drop Point	31		45° 37.404' N	113° 40.761' W
Trail Creek Drop Point	32		45° 36.323' N	113° 41.098' W

Event Point	H Completed Hand Line
Air Operations Helispot	M Completed Mixed Construction Line
Helibase	P Completed Plow Line
Unimproved Landing Area	R Completed Road as Line
Assignment Breaks	Ops Planned
Division Break	Planned Dozer Line
Logistics Incident Command Post	Planned Fuel Break
Operations Lookout	Planned Hand Line
Communications Mobile Weather Unit	Planned Mixed Construction Line
Repeater	Planned Road as Line
Safety Hazard	Planned Secondary Line
Ops Completed	Access or Improved Road
Completed Dozer Line	Highlighted Feature
Completed Fuel Break	Other
Aerial Fire Retardant Avoidance Areas: Terrestrial	Air Ops Route
Aerial Suppression Prohibited	Temporary Flight Restriction
	Fire Perimeter
	Contained Line
	Event Polygon
	Wildfire Daily Fire Perimeter
	Forest Service Land
	State Public Lands
	Other State Lands
	BLM Lands

### Flight Restriction Information

Alder Creek - 1/2315 - 12,500ft ceiling  
Trail Creek - 1/2310 - 12,500ft ceiling



Fire perimeter updated from  
Acres from IR on 07/25/21 22:40

