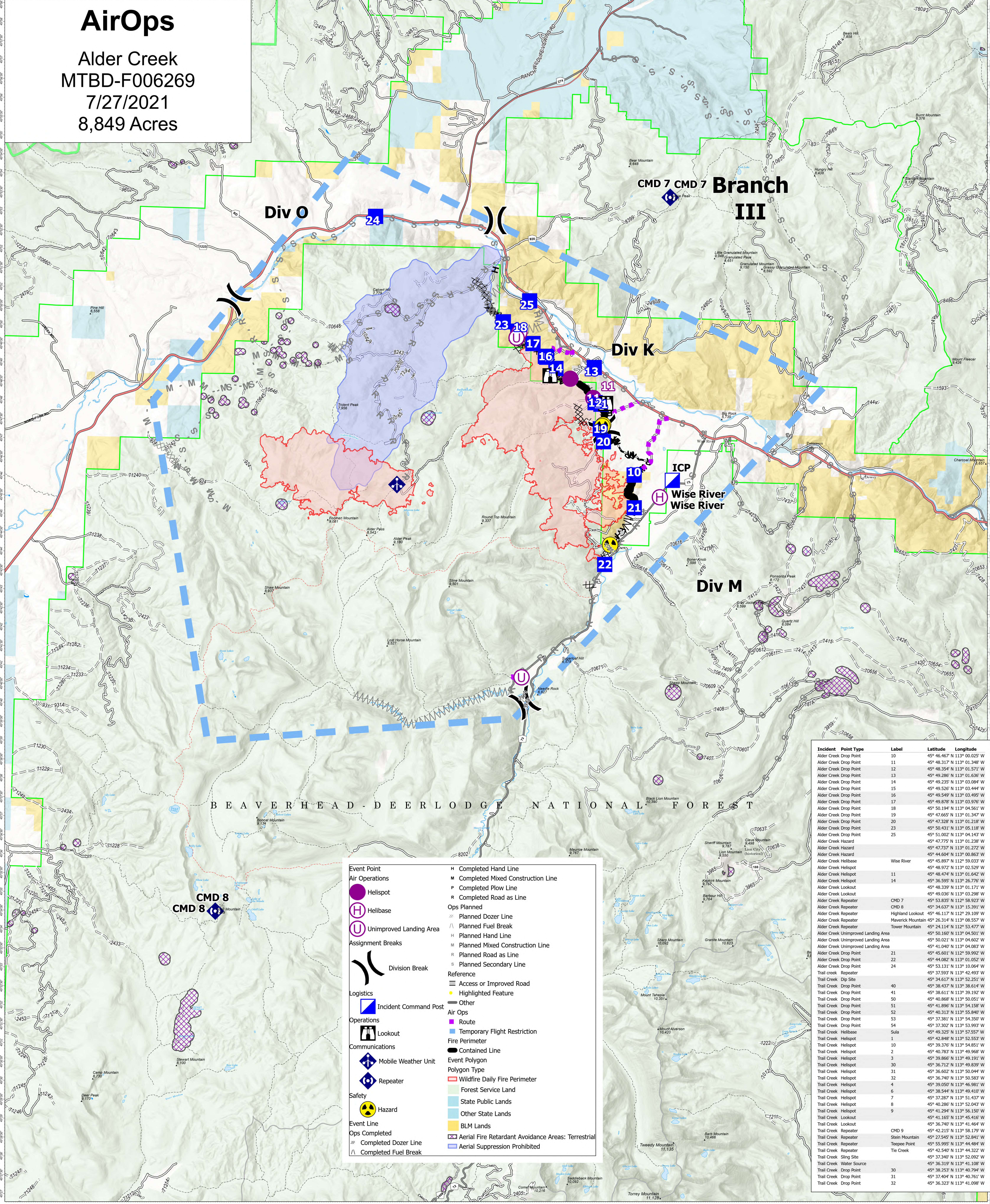


AirOps

Alder Creek
MTBD-F006269
7/27/2021
8,849 Acres



BEAVERHEAD-DEERLODGE NATIONAL FOREST

	Event Point		H Completed Hand Line
	Air Operations Helispot		M Completed Mixed Construction Line
	Air Operations Helibase		P Completed Plow Line
	Air Operations Unimproved Landing Area		R Completed Road as Line
	Assignment Breaks Division Break		Ops Planned
	Logistics Incident Command Post		Planned Dozer Line
	Operations Lookout		Planned Fuel Break
	Communications Mobile Weather Unit		Planned Hand Line
	Communications Repeater		M Planned Mixed Construction Line
	Safety Hazard		R Planned Road as Line
	Event Line Ops Completed		S Planned Secondary Line
	Ops Completed		Reference
	Ops Completed Dozer Line		Access or Improved Road
	Completed Fuel Break		Highlighted Feature
	Completed Fuel Break		Other
	Completed Fuel Break		Aerial Fire Retardant Avoidance Areas: Terrestrial
	Completed Fuel Break		Aerial Suppression Prohibited

Incident	Point Type	Label	Latitude	Longitude
Alder Creek Drop Point	10		45° 46.467' N	113° 00.025' W
Alder Creek Drop Point	11		45° 48.317' N	113° 01.348' W
Alder Creek Drop Point	12		45° 48.354' N	113° 01.571' W
Alder Creek Drop Point	13		45° 49.286' N	113° 01.636' W
Alder Creek Drop Point	14		45° 49.235' N	113° 03.084' W
Alder Creek Drop Point	15		45° 49.535' N	113° 03.444' W
Alder Creek Drop Point	16		45° 49.549' N	113° 03.495' W
Alder Creek Drop Point	17		45° 49.878' N	113° 03.976' W
Alder Creek Drop Point	18		45° 50.194' N	113° 04.561' W
Alder Creek Drop Point	19		45° 47.665' N	113° 01.347' W
Alder Creek Drop Point	20		45° 47.328' N	113° 01.218' W
Alder Creek Drop Point	23		45° 50.431' N	113° 05.118' W
Alder Creek Drop Point	25		45° 51.002' N	113° 04.143' W
Alder Creek Hazard	15		45° 47.775' N	113° 03.238' W
Alder Creek Hazard			45° 47.737' N	113° 01.272' W
Alder Creek Hazard			45° 44.604' N	113° 00.863' W
Alder Creek Helibase		Wise River	45° 45.897' N	112° 59.033' W
Alder Creek Helispot			45° 48.972' N	113° 02.529' W
Alder Creek Helispot			45° 48.474' N	113° 01.642' W
Alder Creek Helispot	11		45° 48.474' N	113° 01.642' W
Alder Creek Helispot	14		45° 46.595' N	113° 02.776' W
Alder Creek Lookout			45° 49.339' N	113° 03.171' W
Alder Creek Lookout			45° 49.036' N	113° 03.298' W
Alder Creek Repeater	CMD 7		45° 53.835' N	112° 58.923' W
Alder Creek Repeater	CMD 8		45° 34.637' N	113° 15.391' W
Alder Creek Repeater		Highland Lookout	45° 46.117' N	112° 29.109' W
Alder Creek Repeater		Maverick Mountain	45° 26.314' N	113° 08.557' W
Alder Creek Repeater		Tower Mountain	45° 24.114' N	112° 53.477' W
Alder Creek Unimproved Landing Area			45° 50.160' N	113° 05.501' W
Alder Creek Unimproved Landing Area			45° 50.021' N	113° 04.602' W
Alder Creek Unimproved Landing Area			45° 41.040' N	113° 04.063' W
Alder Creek Drop Point	21		45° 45.601' N	112° 59.992' W
Alder Creek Drop Point	22		45° 44.082' N	113° 01.052' W
Alder Creek Drop Point	24		45° 53.131' N	113° 10.064' W
Trail Creek Repeater			45° 37.593' N	113° 42.493' W
Trail Creek Dip Site			45° 34.617' N	113° 52.251' W
Trail Creek Drop Point	40		45° 38.437' N	113° 38.614' W
Trail Creek Drop Point	41		45° 38.611' N	113° 39.192' W
Trail Creek Drop Point	50		45° 40.868' N	113° 50.051' W
Trail Creek Drop Point	51		45° 41.896' N	113° 54.158' W
Trail Creek Drop Point	52		45° 40.313' N	113° 55.840' W
Trail Creek Drop Point	53		45° 37.381' N	113° 54.350' W
Trail Creek Drop Point	54		45° 37.302' N	113° 53.993' W
Trail Creek Helibase		Sula	45° 49.325' N	113° 57.557' W
Trail Creek Helispot	1		45° 39.549' N	113° 54.851' W
Trail Creek Helispot	10		45° 39.376' N	113° 54.851' W
Trail Creek Helispot	2		45° 40.783' N	113° 49.968' W
Trail Creek Helispot	3		45° 39.866' N	113° 49.191' W
Trail Creek Helispot	30		45° 36.712' N	113° 49.839' W
Trail Creek Helispot	31		45° 36.602' N	113° 50.044' W
Trail Creek Helispot	32		45° 36.740' N	113° 50.583' W
Trail Creek Helispot	4		45° 39.050' N	113° 46.981' W
Trail Creek Helispot	6		45° 38.544' N	113° 51.410' W
Trail Creek Helispot	7		45° 37.287' N	113° 51.437' W
Trail Creek Helispot	8		45° 40.286' N	113° 52.043' W
Trail Creek Helispot	9		45° 41.294' N	113° 56.150' W
Trail Creek Lookout			45° 41.165' N	113° 45.416' W
Trail Creek Lookout			45° 36.740' N	113° 41.464' W
Trail Creek Repeater			45° 42.215' N	113° 58.179' W
Trail Creek Repeater		Stem Mountain	45° 27.545' N	113° 52.841' W
Trail Creek Repeater		Tweezer Point	45° 35.995' N	113° 44.484' W
Trail Creek Repeater		Tie Creek	45° 42.540' N	113° 44.322' W
Trail Creek Sling Site			45° 37.340' N	113° 52.092' W
Trail Creek Water Source			45° 36.319' N	113° 41.108' W
Trail Creek Drop Point	30		45° 38.253' N	113° 40.794' W
Trail Creek Drop Point	31		45° 37.404' N	113° 40.761' W
Trail Creek Drop Point	32		45° 36.323' N	113° 41.098' W

Flight Restriction Information

Alder Creek - 1/2315 - 12,500ft ceiling
Trail Creek - 1/2310 - 12,500ft ceiling



Fire perimeter updated from
Acres from IR on 07/26/21 19:45

