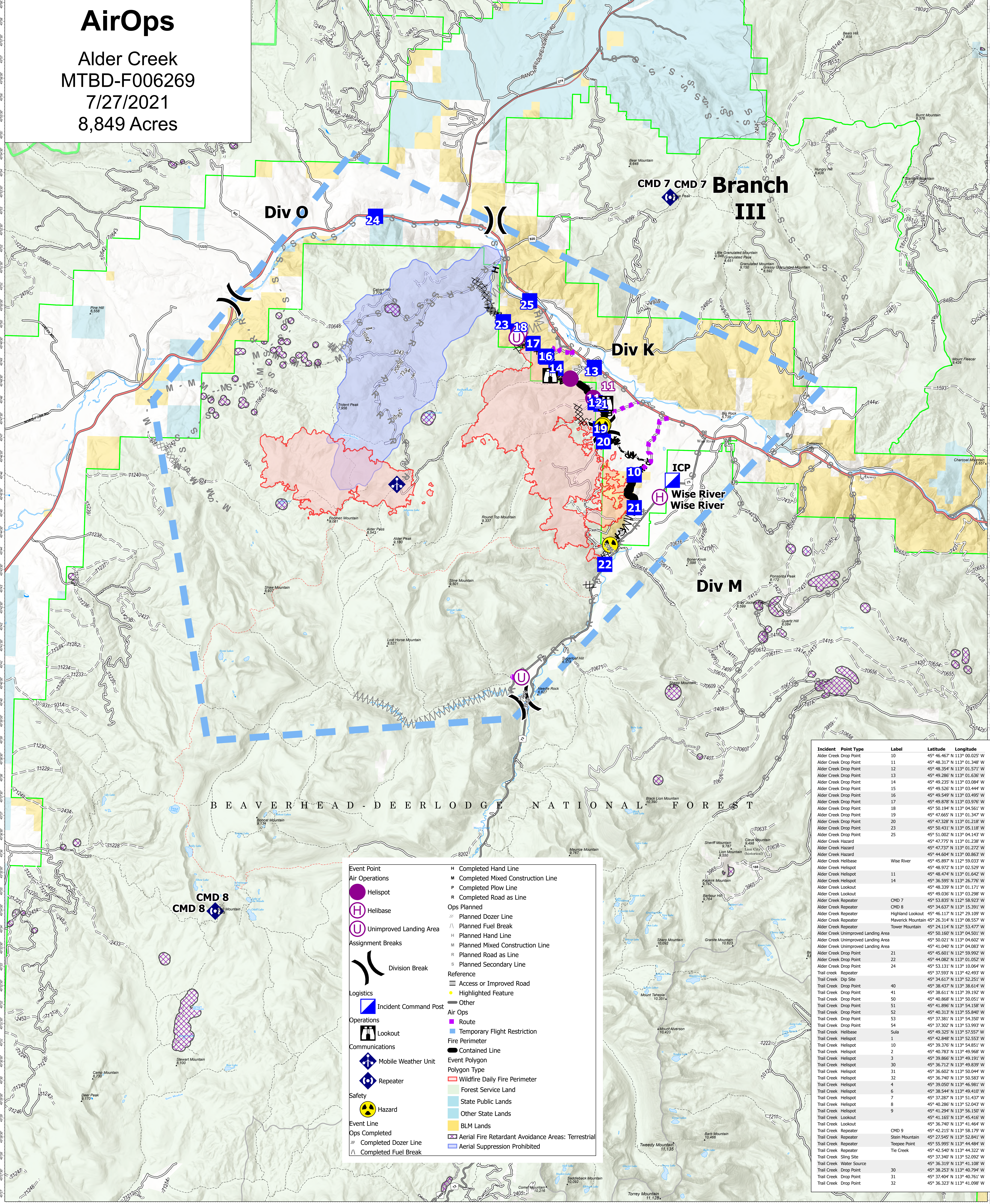


AirOps

Alder Creek
MTBD-F006269
7/27/2021
8,849 Acres



| Incident | Point Type | Label | Latitude | Longitude |
|-------------------------------------|------------|-------------------|------------------------------|-----------|
| Alder Creek Drop Point | 10 | | 45° 46.467' N 113° 00.025' W | |
| Alder Creek Drop Point | 11 | | 45° 48.317' N 113° 01.348' W | |
| Alder Creek Drop Point | 12 | | 45° 48.354' N 113° 01.571' W | |
| Alder Creek Drop Point | 13 | | 45° 49.286' N 113° 01.636' W | |
| Alder Creek Drop Point | 14 | | 45° 49.235' N 113° 03.084' W | |
| Alder Creek Drop Point | 15 | | 45° 49.535' N 113° 03.444' W | |
| Alder Creek Drop Point | 16 | | 45° 49.549' N 113° 03.495' W | |
| Alder Creek Drop Point | 17 | | 45° 49.878' N 113° 03.976' W | |
| Alder Creek Drop Point | 18 | | 45° 50.194' N 113° 04.561' W | |
| Alder Creek Drop Point | 19 | | 45° 47.665' N 113° 01.347' W | |
| Alder Creek Drop Point | 20 | | 45° 47.328' N 113° 01.218' W | |
| Alder Creek Drop Point | 23 | | 45° 50.431' N 113° 05.118' W | |
| Alder Creek Drop Point | 25 | | 45° 51.002' N 113° 04.143' W | |
| Alder Creek Hazard | 15 | | 45° 47.775' N 113° 01.238' W | |
| Alder Creek Hazard | | | 45° 47.737' N 113° 01.272' W | |
| Alder Creek Hazard | | | 45° 44.604' N 113° 00.863' W | |
| Alder Creek Helibase | | Wise River | 45° 45.897' N 112° 59.033' W | |
| Alder Creek Helispot | | | 45° 48.972' N 113° 02.529' W | |
| Alder Creek Helispot | 11 | | 45° 48.474' N 113° 01.642' W | |
| Alder Creek Helispot | 14 | | 45° 36.595' N 113° 26.776' W | |
| Alder Creek Lookout | | | 45° 48.339' N 113° 01.171' W | |
| Alder Creek Lookout | | | 45° 49.036' N 113° 03.298' W | |
| Alder Creek Repeater | CMD 7 | | 45° 53.835' N 112° 58.923' W | |
| Alder Creek Repeater | CMD 8 | | 45° 34.637' N 113° 15.391' W | |
| Alder Creek Repeater | | Highland Lookout | 45° 46.117' N 112° 29.109' W | |
| Alder Creek Repeater | | Maverick Mountain | 45° 26.314' N 113° 08.557' W | |
| Alder Creek Repeater | | Tower Mountain | 45° 24.114' N 112° 53.477' W | |
| Alder Creek Unimproved Landing Area | | | 45° 50.160' N 113° 04.501' W | |
| Alder Creek Unimproved Landing Area | | | 45° 50.021' N 113° 04.602' W | |
| Alder Creek Unimproved Landing Area | | | 45° 41.040' N 113° 04.068' W | |
| Alder Creek Drop Point | 21 | | 45° 45.601' N 112° 59.992' W | |
| Alder Creek Drop Point | 22 | | 45° 44.082' N 113° 01.052' W | |
| Alder Creek Drop Point | 24 | | 45° 53.131' N 113° 10.064' W | |
| Trail Creek Repeater | | | 45° 37.593' N 113° 42.493' W | |
| Trail Creek Dip Site | | | 45° 34.617' N 113° 52.251' W | |
| Trail Creek Drop Point | 40 | | 45° 38.437' N 113° 38.614' W | |
| Trail Creek Drop Point | 41 | | 45° 38.611' N 113° 39.192' W | |
| Trail Creek Drop Point | 50 | | 45° 40.868' N 113° 50.051' W | |
| Trail Creek Drop Point | 51 | | 45° 41.896' N 113° 54.158' W | |
| Trail Creek Drop Point | 52 | | 45° 40.313' N 113° 55.840' W | |
| Trail Creek Drop Point | 53 | | 45° 37.381' N 113° 54.350' W | |
| Trail Creek Drop Point | 54 | | 45° 37.302' N 113° 53.993' W | |
| Trail Creek Helibase | | Sula | 45° 49.325' N 113° 57.557' W | |
| Trail Creek Helispot | 1 | | 45° 37.745' N 113° 52.861' W | |
| Trail Creek Helispot | 10 | | 45° 39.767' N 113° 54.861' W | |
| Trail Creek Helispot | 2 | | 45° 40.783' N 113° 49.968' W | |
| Trail Creek Helispot | 3 | | 45° 39.866' N 113° 49.191' W | |
| Trail Creek Helispot | 30 | | 45° 36.712' N 113° 49.839' W | |
| Trail Creek Helispot | 31 | | 45° 36.602' N 113° 50.044' W | |
| Trail Creek Helispot | 32 | | 45° 36.740' N 113° 50.583' W | |
| Trail Creek Helispot | 4 | | 45° 39.050' N 113° 46.981' W | |
| Trail Creek Helispot | 6 | | 45° 38.544' N 113° 49.410' W | |
| Trail Creek Helispot | 7 | | 45° 37.287' N 113° 51.437' W | |
| Trail Creek Helispot | 8 | | 45° 40.286' N 113° 52.043' W | |
| Trail Creek Helispot | 9 | | 45° 41.294' N 113° 56.150' W | |
| Trail Creek Lookout | | | 45° 41.165' N 113° 45.416' W | |
| Trail Creek Lookout | | | 45° 36.740' N 113° 41.464' W | |
| Trail Creek Repeater | CMD 9 | | 45° 42.215' N 113° 58.179' W | |
| Trail Creek Repeater | | Steen Mountain | 45° 27.945' N 113° 52.861' W | |
| Trail Creek Repeater | | Teepees Point | 45° 55.995' N 113° 44.484' W | |
| Trail Creek Repeater | | Tie Creek | 45° 42.540' N 113° 44.322' W | |
| Trail Creek Sling Site | | | 45° 37.340' N 113° 52.092' W | |
| Trail Creek Water Source | | | 45° 36.319' N 113° 41.108' W | |
| Trail Creek Drop Point | 30 | | 45° 38.253' N 113° 40.794' W | |
| Trail Creek Drop Point | 31 | | 45° 37.404' N 113° 40.761' W | |
| Trail Creek Drop Point | 32 | | 45° 36.323' N 113° 41.098' W | |

Event Point

- Helispot
- Ⓜ Helibase
- Ⓢ Unimproved Landing Area

Assignment Breaks

- ⎓ Division Break

Logistics

- Ⓜ Incident Command Post
- 🔍 Lookout
- 📶 Mobile Weather Unit
- 📶 Repeater
- ☠ Hazard

Operations

- Ⓜ Completed Hand Line
- Ⓜ Completed Mixed Construction Line
- Ⓜ Completed Plow Line
- Ⓜ Completed Road as Line
- Ⓜ Ops Planned
- Ⓜ Planned Dozer Line
- Ⓜ Planned Fuel Break
- Ⓜ Planned Hand Line
- Ⓜ Planned Mixed Construction Line
- Ⓜ Planned Road as Line
- Ⓜ Planned Secondary Line
- Ⓜ Reference
- Ⓜ Access or Improved Road
- Ⓜ Highlighted Feature

Communications

- 📶 Other
- 📶 Route
- 📶 Temporary Flight Restriction
- 📶 Fire Perimeter
- 📶 Contained Line
- 📶 Event Polygon
- 📶 Polygon Type
- 📶 Wildfire Daily Fire Perimeter
- 📶 Forest Service Land
- 📶 State Public Lands
- 📶 Other State Lands
- 📶 BLM Lands
- 📶 Aerial Fire Retardant Avoidance Areas: Terrestrial
- 📶 Aerial Suppression Prohibited

Safety

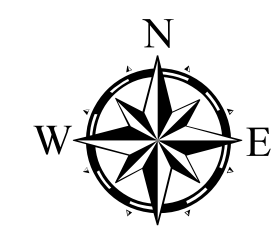
- ☠ Hazard

Event Line

- Ⓜ Ops Completed
- Ⓜ Completed Dozer Line
- Ⓜ Completed Fuel Break

Flight Restriction Information

Alder Creek - 1/2315 - 12,500ft ceiling
Trail Creek - 1/2310 - 12,500ft ceiling



Fire perimeter updated from Acres from IR on 07/26/21 19:45

