
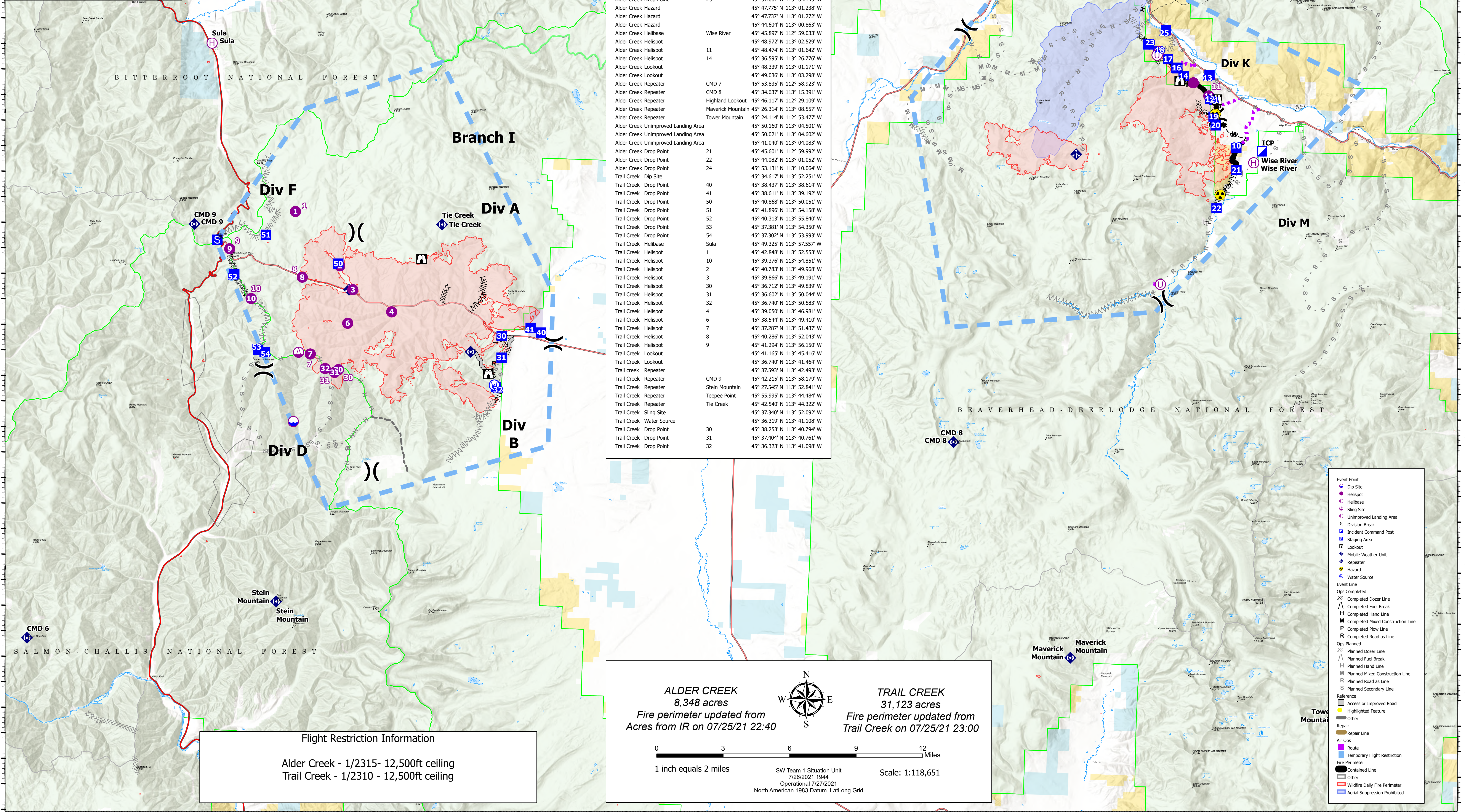


114°5'W 114°W 113°55'W 113°50'W 113°45'W 113°40'W 113°35'W 113°30'W 113°25'W 113°20'W 113°15'W 113°10'W 113°5'W 113°W 112°55'W 112°50'W

AirOps
 Alder Creek Trail Creek
 MTBD-F006269 MTBDF-006298



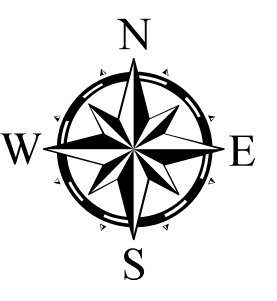
Incident	Point Type	Label	Latitude	Longitude
Alder Creek	Drop Point	10	45° 46.467' N 113° 00.025' W	
Alder Creek	Drop Point	11	45° 48.317' N 113° 01.348' W	
Alder Creek	Drop Point	12	45° 48.354' N 113° 01.571' W	
Alder Creek	Drop Point	13	45° 49.286' N 113° 01.636' W	
Alder Creek	Drop Point	14	45° 49.235' N 113° 03.084' W	
Alder Creek	Drop Point	15	45° 49.526' N 113° 03.444' W	
Alder Creek	Drop Point	16	45° 49.549' N 113° 03.495' W	
Alder Creek	Drop Point	17	45° 49.878' N 113° 03.976' W	
Alder Creek	Drop Point	18	45° 50.194' N 113° 04.561' W	
Alder Creek	Drop Point	19	45° 47.665' N 113° 01.347' W	
Alder Creek	Drop Point	20	45° 47.328' N 113° 01.218' W	
Alder Creek	Drop Point	23	45° 50.431' N 113° 05.118' W	
Alder Creek	Drop Point	25	45° 51.002' N 113° 04.143' W	
Alder Creek	Hazard		45° 47.775' N 113° 01.238' W	
Alder Creek	Hazard		45° 47.737' N 113° 01.272' W	
Alder Creek	Hazard		45° 44.604' N 113° 00.863' W	
Alder Creek	Helibase	Wise River	45° 45.897' N 112° 59.033' W	
Alder Creek	Helispot		45° 48.972' N 113° 02.529' W	
Alder Creek	Helispot	11	45° 48.474' N 113° 01.642' W	
Alder Creek	Helispot	14	45° 36.595' N 113° 26.776' W	
Alder Creek	Lookout		45° 48.339' N 113° 01.171' W	
Alder Creek	Lookout		45° 49.036' N 113° 03.298' W	
Alder Creek	Repeater	CMD 7	45° 53.835' N 112° 58.923' W	
Alder Creek	Repeater	CMD 8	45° 34.637' N 113° 15.391' W	
Alder Creek	Repeater	Highland Lookout	45° 46.117' N 112° 29.109' W	
Alder Creek	Repeater	Maverick Mountain	45° 26.314' N 113° 08.557' W	
Alder Creek	Repeater	Tower Mountain	45° 24.114' N 112° 53.477' W	
Alder Creek	Unimproved Landing Area		45° 50.160' N 113° 04.501' W	
Alder Creek	Unimproved Landing Area		45° 50.021' N 113° 04.602' W	
Alder Creek	Unimproved Landing Area		45° 41.040' N 113° 04.083' W	
Alder Creek	Drop Point	21	45° 45.601' N 112° 59.992' W	
Alder Creek	Drop Point	22	45° 44.082' N 113° 01.052' W	
Alder Creek	Drop Point	24	45° 53.131' N 113° 10.064' W	
Trail Creek	Dip Site		45° 34.617' N 113° 52.251' W	
Trail Creek	Drop Point	40	45° 38.437' N 113° 38.614' W	
Trail Creek	Drop Point	41	45° 38.611' N 113° 39.192' W	
Trail Creek	Drop Point	50	45° 40.868' N 113° 50.051' W	
Trail Creek	Drop Point	51	45° 41.896' N 113° 54.158' W	
Trail Creek	Drop Point	52	45° 40.313' N 113° 55.840' W	
Trail Creek	Drop Point	53	45° 37.381' N 113° 54.350' W	
Trail Creek	Drop Point	54	45° 37.302' N 113° 53.993' W	
Trail Creek	Helibase	Sula	45° 49.325' N 113° 57.557' W	
Trail Creek	Helispot	1	45° 42.848' N 113° 52.553' W	
Trail Creek	Helispot	10	45° 39.376' N 113° 54.851' W	
Trail Creek	Helispot	2	45° 40.783' N 113° 49.968' W	
Trail Creek	Helispot	3	45° 39.866' N 113° 49.191' W	
Trail Creek	Helispot	30	45° 36.712' N 113° 49.839' W	
Trail Creek	Helispot	31	45° 36.602' N 113° 50.044' W	
Trail Creek	Helispot	32	45° 36.740' N 113° 50.583' W	
Trail Creek	Helispot	4	45° 39.050' N 113° 46.981' W	
Trail Creek	Helispot	6	45° 38.544' N 113° 49.410' W	
Trail Creek	Helispot	7	45° 37.287' N 113° 51.437' W	
Trail Creek	Helispot	8	45° 40.286' N 113° 52.043' W	
Trail Creek	Helispot	9	45° 41.294' N 113° 56.150' W	
Trail Creek	Lookout		45° 41.165' N 113° 45.416' W	
Trail Creek	Lookout		45° 36.740' N 113° 41.464' W	
Trail Creek	Repeater		45° 37.593' N 113° 42.493' W	
Trail Creek	Repeater	CMD 9	45° 42.215' N 113° 58.179' W	
Trail Creek	Repeater	Stein Mountain	45° 27.545' N 113° 52.841' W	
Trail Creek	Repeater	Teepee Point	45° 55.995' N 113° 44.484' W	
Trail Creek	Repeater	Tie Creek	45° 42.540' N 113° 44.322' W	
Trail Creek	Sling Site		45° 37.340' N 113° 52.092' W	
Trail Creek	Water Source		45° 36.319' N 113° 41.108' W	
Trail Creek	Drop Point	30	45° 38.253' N 113° 40.794' W	
Trail Creek	Drop Point	31	45° 37.404' N 113° 40.761' W	
Trail Creek	Drop Point	32	45° 36.323' N 113° 41.098' W	



Flight Restriction Information
 Alder Creek - 1/2315- 12,500ft ceiling
 Trail Creek - 1/2310 - 12,500ft ceiling

ALDER CREEK
 8,348 acres
 Fire perimeter updated from IR on 07/25/21 22:40

TRAIL CREEK
 31,123 acres
 Fire perimeter updated from Trail Creek on 07/25/21 23:00



0 3 6 9 12 Miles
 1 inch equals 2 miles

SW Team 1 Situation Unit
 7/28/2021 1944
 Operational 7/27/2021
 North American 1983 Datum, Lat/Long Grid

Scale: 1:118,651

Event Point

- Dip Site
- Helispot
- Helibase
- Sling Site
- Unimproved Landing Area
- Division Break
- Incident Command Post
- Staging Area
- Lookout
- Repeater
- Mobile Weather Unit
- Repeater
- Hazard
- Water Source

Event Line

- Ops Completed
- Completed Dozer Line
- Completed Fuel Break
- Completed Hand Line
- Completed Mixed Construction Line
- Completed Plow Line
- Completed Road as Line
- Ops Planned
- Planned Dozer Line
- Planned Fuel Break
- Planned Hand Line
- Planned Mixed Construction Line
- Planned Road as Line
- Planned Secondary Line

Reference

- Access or Improved Road
- Highlighted Feature
- Other
- Repair
- Repair Line

Air Ops

- Route
- Temporary Flight Restriction
- Perimeter
- Contained Line
- Other
- Wildfire Daily Fire Perimeter
- Aerial Suppression Prohibited

114°5'W 114°W 113°55'W 113°50'W 113°45'W 113°40'W 113°35'W 113°30'W 113°25'W 113°20'W 113°15'W 113°10'W 113°5'W 113°W 112°55'W 112°50'W