

# MAPS

**MAP 6**  
 Performing a re-evaluation of the Organizational Needs Assessment; Amending and expanding area/road/trail closures; Scout & identify additional contingency lines; Engagement with the Beaverhead County Sheriff's Office re: implementation of an Evacuation Plan; Ensure good cooperation with impacted partners, homeowners, & land/home owners in/around the vicinity of Wise River, MT; Continued communication and coordination with any potentially affected permittees;

**MAP 7**  
 Performing a re-evaluation of the Organizational Needs Assessment, complexity analysis; Recommend formal closure of the the Pioneer Scenic Byway; Coordinate with Wise River Volunteer Fire Dept. (VFD) for structure assessments; Adjust USFS & BLM access closures; Explore relocating the current ICP.

**MAP 1**  
 Performing a re-evaluation of the Organizational Needs Assessment; Amending and expanding area/road/trail closures; Scout & identify additional contingency lines; Engagement with the Beaverhead County Sheriff's Office re: implementation of an Evacuation Plan; Ensure good cooperation with impacted partners, homeowners, & land/home owners in/around the vicinity of Wise River, MT; Continued communication and coordination with any potentially affected permittees; Coordinate with MT DOT & MT MPH re: potential flaggers or closures(s) on Hwy 43.

**MAP 10**  
**Recommended Management Action:**  
 • Consider need for firing operations necessary to reinforce line from fire spread toward the primary control line south of the Highway 43 corridor.  
 • Contact Beaverhead County Sheriff to advise that MAP 10 (Alder Creek North) has been crossed and that evacuation alert and implementation decisions should be considered in Zone 6A and 6B.  
 • Consider need for road closures along Highway 43 given potential fire behavior, smoke and visibility concerns, and safety of suppression operations. Coordinate with MT DOT & MT MPH re: potential flaggers or closures(s) on Hwy 43.  
 • Continued communication and coordination with any potentially affected permittees;  
 • Ensure good cooperation with impacted partners, homeowners, & land/home owners in/around the vicinity of Wise River, MT

**MAP 11**  
**Recommended Management Action:**  
 • Consider resource needs to implement burnout operations to reinforce structure protection and control line adjacent to the Highway 43 corridor.  
 • Contact Beaverhead County Sheriff to advise that MAP 11 (Bryant Creek One) has been crossed and that evacuation alert and implementation decisions should be considered in Zone 6A and 6B  
 • Ensure good cooperation with impacted partners, homeowners, & land/home owners in/around the vicinity of Wise River, MT  
 • Continued communication and coordination with any potentially affected permittees;  
 • Coordination with MT DOT & MT MPH concerning potential need for highway safety measures.

**MAP 12**  
**Recommended Management Action:**  
 • Coordination with Beaverhead County Sheriff to facilitate traffic safety measures along Highway 43.  
 • Engagement with the Beaverhead County Sheriff's Office re: implementation of an Evacuation Plan for the residences and businesses along the Highway 43 Corridor in Zones 6A and 6B  
 • Ensure good cooperation with impacted partners, homeowners, & land/home owners in/around the vicinity of Wise River, MT  
 • Continued communication and coordination with any potentially affected permittees;  
 • Consider implementing burnout operations to reinforce structure protection and control line adjacent to the Highway 43 corridor.

**MAP 13**  
**Recommended Management Action:**  
 • Consider resource needs to implement burnout operations to reinforce structure protection and primary control line adjacent to the Scenic Byway corridor.  
 • Contact Beaverhead County Sheriff to advise that wildfire activity is poised to threaten the Scenic Byway corridor and that public safety measure planning should be confirmed and considered.  
 • Ensure good cooperation with impacted partners, homeowners, & land/home owners in/around the vicinity of Wise River, MT  
 • Continued communication and coordination with any potentially affected permittees

**MAP 1**  
 Performing a re-evaluation of the Organizational Needs Assessment; Amending and expanding area/road/trail closures; Scout & identify additional contingency lines; Engagement with the Beaverhead County Sheriff's Office re: implementation of an Evacuation Plan; Ensure good cooperation with impacted partners, homeowners, & land/home owners in/around the vicinity of Wise River, MT; Continued communication and coordination with any potentially affected permittees; Coordinate with MT DOT & MT MPH re: potential flaggers or closures(s) on Hwy 43.

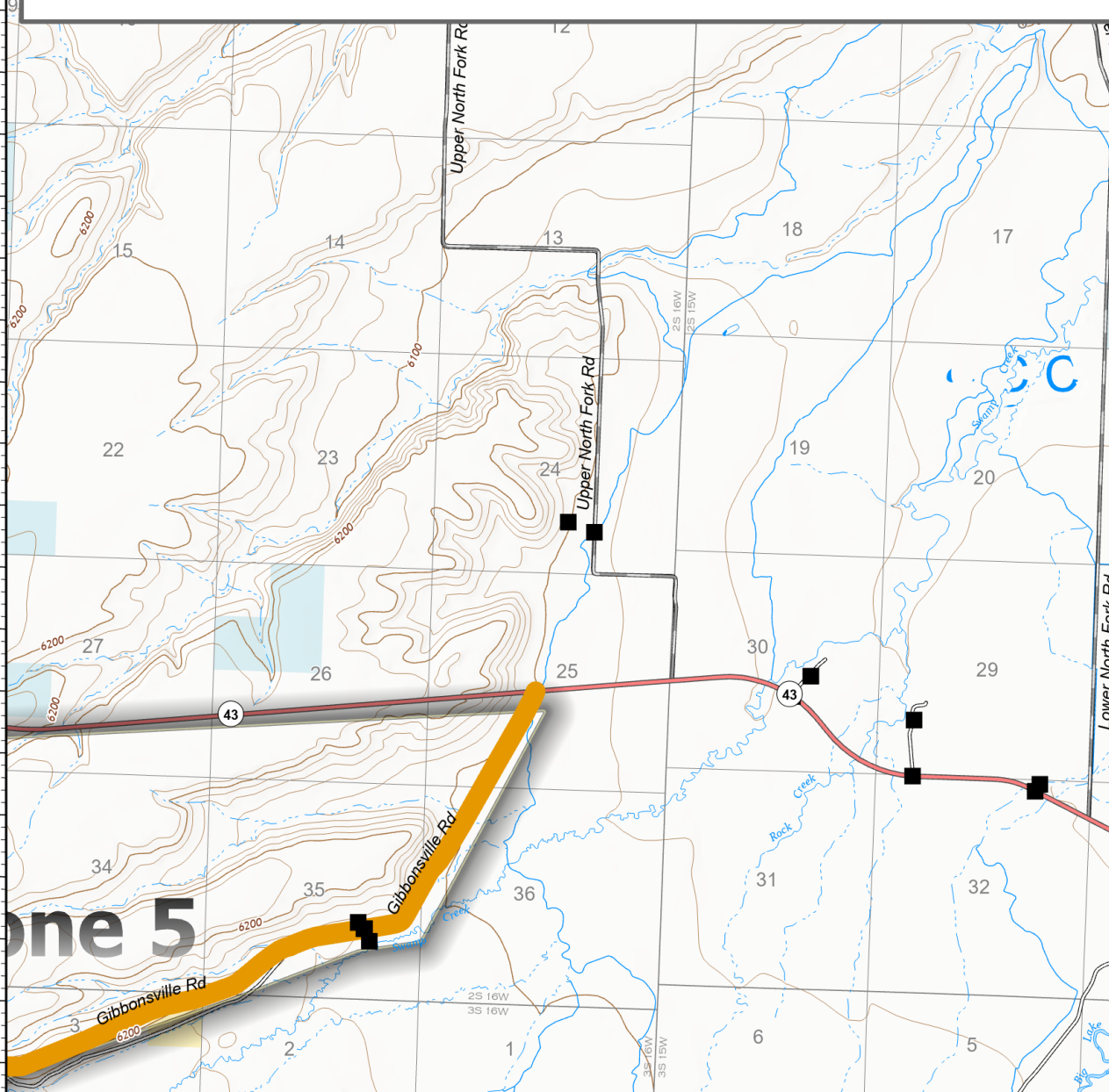
**MAP 10**  
**Recommended Management Action:**  
 • Consider need for firing operations necessary to reinforce line from fire spread toward the primary control line south of the Highway 43 corridor.  
 • Contact Beaverhead County Sheriff to advise that MAP 10 (Alder Creek North) has been crossed and that evacuation alert and implementation decisions should be considered in Zone 6A and 6B.  
 • Consider need for road closures along Highway 43 given potential fire behavior, smoke and visibility concerns, and safety of suppression operations. Coordinate with MT DOT & MT MPH re: potential flaggers or closures(s) on Hwy 43.  
 • Continued communication and coordination with any potentially affected permittees;  
 • Ensure good cooperation with impacted partners, homeowners, & land/home owners in/around the vicinity of Wise River, MT

**MAP 11**  
**Recommended Management Action:**  
 • Consider resource needs to implement burnout operations to reinforce structure protection and control line adjacent to the Highway 43 corridor.  
 • Contact Beaverhead County Sheriff to advise that MAP 11 (Bryant Creek One) has been crossed and that evacuation alert and implementation decisions should be considered in Zone 6A and 6B  
 • Ensure good cooperation with impacted partners, homeowners, & land/home owners in/around the vicinity of Wise River, MT  
 • Continued communication and coordination with any potentially affected permittees;  
 • Coordination with MT DOT & MT MPH concerning potential need for highway safety measures.

**MAP 12**  
**Recommended Management Action:**  
 • Coordination with Beaverhead County Sheriff to facilitate traffic safety measures along Highway 43.  
 • Engagement with the Beaverhead County Sheriff's Office re: implementation of an Evacuation Plan for the residences and businesses along the Highway 43 Corridor in Zones 6A and 6B  
 • Ensure good cooperation with impacted partners, homeowners, & land/home owners in/around the vicinity of Wise River, MT  
 • Continued communication and coordination with any potentially affected permittees;  
 • Consider implementing burnout operations to reinforce structure protection and control line adjacent to the Highway 43 corridor.

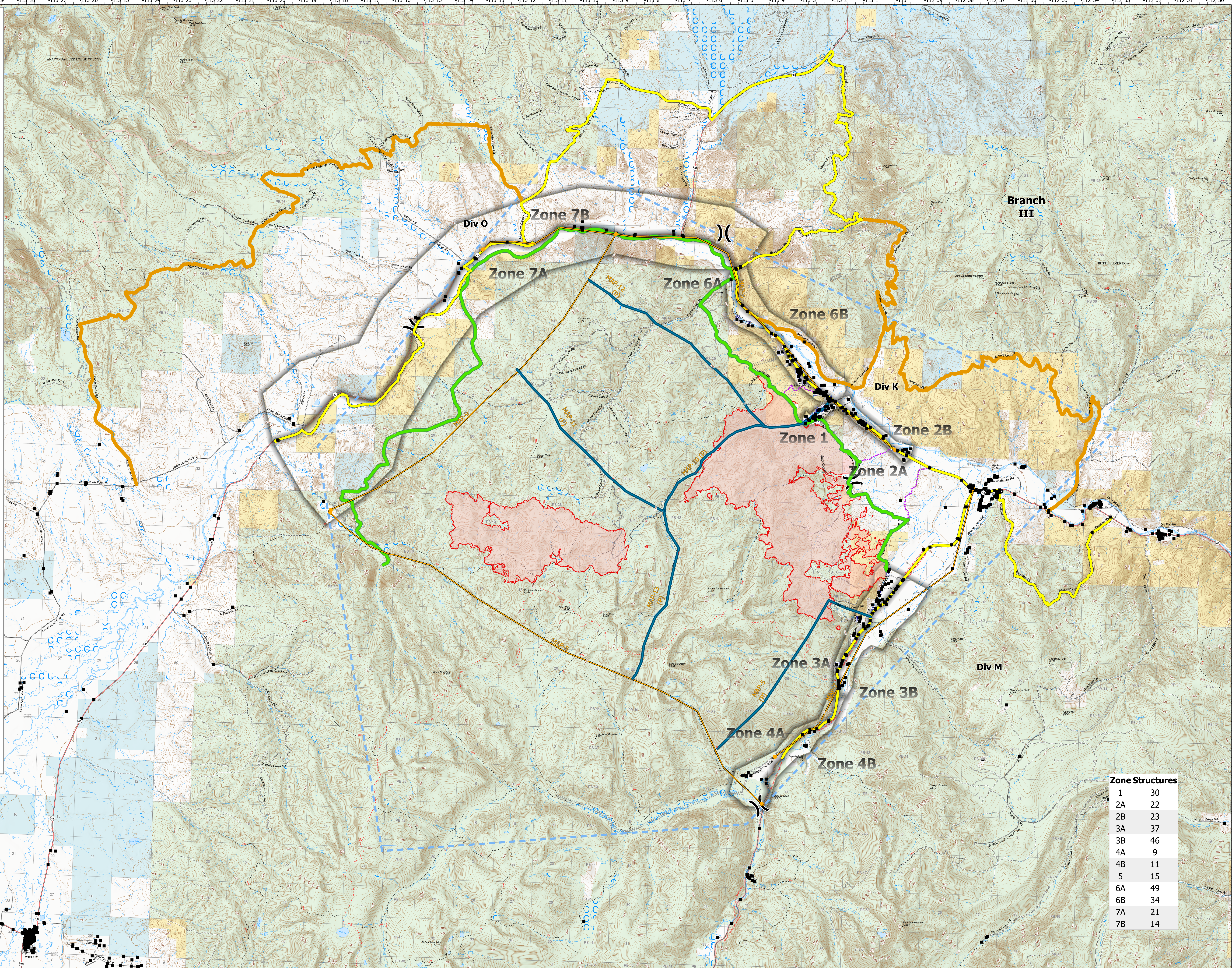
**MAP 13**  
**Recommended Management Action:**  
 • Consider resource needs to implement burnout operations to reinforce structure protection and primary control line adjacent to the Scenic Byway corridor.  
 • Contact Beaverhead County Sheriff to advise that wildfire activity is poised to threaten the Scenic Byway corridor and that public safety measure planning should be confirmed and considered.  
 • Ensure good cooperation with impacted partners, homeowners, & land/home owners in/around the vicinity of Wise River, MT  
 • Continued communication and coordination with any potentially affected permittees

**MAP 13**  
**Recommended Management Action:**  
 • Consider resource needs to implement burnout operations to reinforce structure protection and primary control line adjacent to the Scenic Byway corridor.  
 • Contact Beaverhead County Sheriff to advise that wildfire activity is poised to threaten the Scenic Byway corridor and that public safety measure planning should be confirmed and considered.  
 • Ensure good cooperation with impacted partners, homeowners, & land/home owners in/around the vicinity of Wise River, MT  
 • Continued communication and coordination with any potentially affected permittees



**SOUTHWEST AREA**  
**INCIDENT MANAGEMENT TEAM**

**PACE**  
 Alder Creek  
 MTBD-F006269  
 7/27/2021  
 8,348 Acres



Zone Structures	
1	30
2A	22
2B	23
3A	37
3B	46
4A	9
4B	11
5	15
6A	49
6B	34
7A	21
7B	14

1 inch equals 0.8 miles  
 Scale: 1:49,671

**Legend:**

- PACE Level**
  - Primary (Green)
  - Alternate (Yellow)
  - Contingency (Orange)
- STATUS**
  - Active (Blue line)
  - Pending (Red line)
  - Structures (Black squares)
- Event Point**
  - Assignment Breaks (X)
  - Division Break (X)
  - Event Line (X)
  - Ops Completed (Dashed line)
  - Completed Dozer Line (Dashed line)
  - Completed Fuel Break (Dashed line)
  - Completed Hand Line (Dashed line)
- Assignment Breaks**
  - Completed Mixed Construction Line (Dashed line)
  - Completed Plow Line (Dashed line)
  - Completed Road as Line (Dashed line)
  - Planned Dozer Line (Dashed line)
  - Planned Fuel Break (Dashed line)
  - Planned Hand Line (Dashed line)
  - Planned Mixed Construction Line (Dashed line)
- Reference**
  - Planned Road as Line (Dashed line)
  - Planned Secondary Line (Dashed line)
  - Access or Improved Road (Dashed line)
  - Highlighted Feature (Dashed line)
  - Other (Dashed line)
  - Air Ops (Dashed line)
  - Route (Dashed line)
- Other**
  - Temporary Flight Restriction (Blue line)
  - Fire Perimeter (Red line)
  - Fire Edge (Red line)
  - Contained Line (Red line)
  - Paved (Grey line)
  - Gravel Road (Grey line)
  - Dirt Road (Grey line)
  - Unimproved Road (Grey line)
  - Forest Service Roads Closed (Blue line)
  - Forest Service Lands (Green)
  - State Public Lands (Blue)
  - Other State Lands (Light Blue)
  - Bureau of Land Management Lands (Yellow)
  - Evacuation Zone (Grey)
  - Management Action Points- Trail (Orange)

