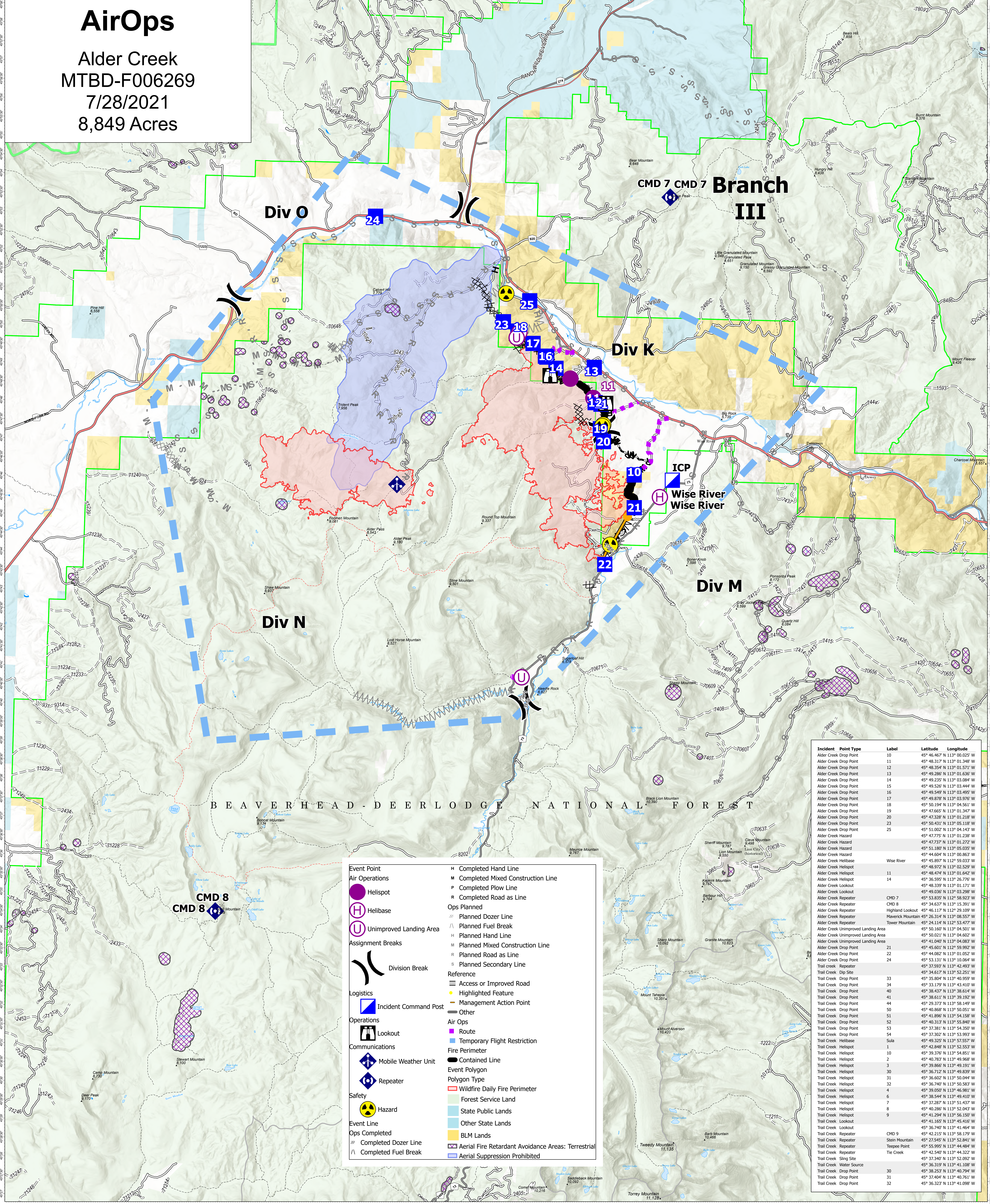


AirOps

Alder Creek
MTBD-F006269
7/28/2021
8,849 Acres



Incident	Point Type	Label	Latitude	Longitude
Alder Creek Drop Point	10		45° 46.467' N	113° 00.025' W
Alder Creek Drop Point	11		45° 48.317' N	113° 01.348' W
Alder Creek Drop Point	12		45° 48.354' N	113° 01.571' W
Alder Creek Drop Point	13		45° 49.286' N	113° 01.538' W
Alder Creek Drop Point	14		45° 49.235' N	113° 03.084' W
Alder Creek Drop Point	15		45° 49.526' N	113° 03.444' W
Alder Creek Drop Point	16		45° 49.549' N	113° 03.495' W
Alder Creek Drop Point	17		45° 49.878' N	113° 03.976' W
Alder Creek Drop Point	18		45° 50.194' N	113° 04.561' W
Alder Creek Drop Point	19		45° 47.665' N	113° 01.347' W
Alder Creek Drop Point	20		45° 47.328' N	113° 01.218' W
Alder Creek Drop Point	23		45° 50.431' N	113° 05.118' W
Alder Creek Drop Point	25		45° 51.002' N	113° 04.143' W
Alder Creek Hazard			45° 47.775' N	113° 01.239' W
Alder Creek Hazard			45° 47.737' N	113° 01.272' W
Alder Creek Hazard			45° 51.180' N	113° 05.035' W
Alder Creek Hazard			45° 44.604' N	113° 00.863' W
Alder Creek Helibase		Wise River	45° 48.972' N	113° 02.529' W
Alder Creek Helispot	11		45° 48.474' N	113° 01.642' W
Alder Creek Helispot	14		45° 36.585' N	113° 26.776' W
Alder Creek Lookout			45° 48.339' N	113° 01.171' W
Alder Creek Lookout			45° 49.036' N	113° 03.298' W
Alder Creek Repeater		CMD 7	45° 53.835' N	112° 58.923' W
Alder Creek Repeater		CMD 8	45° 34.637' N	113° 15.391' W
Alder Creek Repeater		Highland Lookout	45° 46.117' N	113° 20.109' W
Alder Creek Repeater		Haverock Mountain	45° 26.314' N	113° 08.557' W
Alder Creek Repeater		Tower Mountain	45° 24.114' N	112° 53.477' W
Alder Creek Unimproved Landing Area			45° 50.160' N	113° 04.501' W
Alder Creek Unimproved Landing Area			45° 50.021' N	113° 04.602' W
Alder Creek Unimproved Landing Area			45° 41.040' N	113° 04.087' W
Alder Creek Drop Point	21		45° 45.601' N	113° 50.992' W
Alder Creek Drop Point	22		45° 44.082' N	113° 01.052' W
Alder Creek Drop Point	24		45° 53.131' N	113° 10.064' W
Trail Creek Repeater			45° 37.593' N	113° 42.493' W
Trail Creek Dip Site			45° 34.617' N	113° 52.251' W
Trail Creek Drop Point	33		45° 35.804' N	113° 40.959' W
Trail Creek Drop Point	34		45° 33.179' N	113° 43.410' W
Trail Creek Drop Point	40		45° 38.437' N	113° 38.614' W
Trail Creek Drop Point	41		45° 38.611' N	113° 39.192' W
Trail Creek Drop Point	44		45° 29.373' N	113° 58.149' W
Trail Creek Drop Point	50		45° 40.868' N	113° 50.051' W
Trail Creek Drop Point	51		45° 41.896' N	113° 54.158' W
Trail Creek Drop Point	52		45° 40.313' N	113° 55.840' W
Trail Creek Drop Point	53		45° 37.381' N	113° 54.350' W
Trail Creek Drop Point	54		45° 37.302' N	113° 53.993' W
Trail Creek Helibase		Sula	45° 49.325' N	113° 57.557' W
Trail Creek Helispot	1		45° 42.848' N	113° 52.553' W
Trail Creek Helispot	10		45° 36.740' N	113° 50.580' W
Trail Creek Helispot	2		45° 40.783' N	113° 49.968' W
Trail Creek Helispot	3		45° 39.866' N	113° 49.191' W
Trail Creek Helispot	30		45° 36.712' N	113° 49.839' W
Trail Creek Helispot	31		45° 36.602' N	113° 50.044' W
Trail Creek Helispot	32		45° 36.740' N	113° 50.580' W
Trail Creek Helispot	4		45° 39.059' N	113° 46.981' W
Trail Creek Helispot	6		45° 38.544' N	113° 49.410' W
Trail Creek Helispot	7		45° 37.287' N	113° 51.437' W
Trail Creek Helispot	8		45° 40.286' N	113° 52.043' W
Trail Creek Helispot	9		45° 41.294' N	113° 56.159' W
Trail Creek Lookout			45° 41.653' N	113° 45.416' W
Trail Creek Lookout			45° 36.740' N	113° 41.464' W
Trail Creek Repeater		CMD 9	45° 42.215' N	113° 58.179' W
Trail Creek Repeater		Stein Mountain	45° 27.545' N	113° 52.841' W
Trail Creek Repeater		Tepee Creek	45° 55.995' N	113° 44.484' W
Trail Creek Repeater		The Creek	45° 42.540' N	113° 44.322' W
Trail Creek Site			45° 37.340' N	113° 53.092' W
Trail Creek Water Source			45° 36.319' N	113° 41.108' W
Trail Creek Drop Point	30		45° 38.253' N	113° 40.794' W
Trail Creek Drop Point	31		45° 37.404' N	113° 40.761' W
Trail Creek Drop Point	32		45° 36.323' N	113° 41.098' W

Event Point

- Helispot
- Helibase
- Unimproved Landing Area

Assignment Breaks

- Division Break

Logistics

- Incident Command Post
- Lookout
- Mobile Weather Unit
- Repeater

Operations

- Completed Dozer Line
- Completed Fuel Break
- Completed Hand Line
- Completed Mixed Construction Line
- Completed Plow Line
- Completed Road as Line
- Planned Dozer Line
- Planned Fuel Break
- Planned Hand Line
- Planned Mixed Construction Line
- Planned Road as Line
- Planned Secondary Line

Reference

- Access or Improved Road
- Highlighted Feature
- Management Action Point
- Other

Ops Planned

- Temporay Flight Restriction

Fire Perimeter

- Contained Line
- Wildfire Daily Fire Perimeter

Event Polygon

- Forest Service Land
- State Public Lands
- Other State Lands
- BLM Lands
- Aerial Fire Retardant Avoidance Areas: Terrestrial
- Aerial Suppression Prohibited

Flight Restriction Information

Alder Creek - 1/2315 - 12,500ft ceiling
Trail Creek - 1/2310 - 12,500ft ceiling



SW Team 1
7/27/2021 2014
North American 1983 Datum. LatLong Grid

Fire perimeter updated from Acres from IR on 07/26/21 19:45

