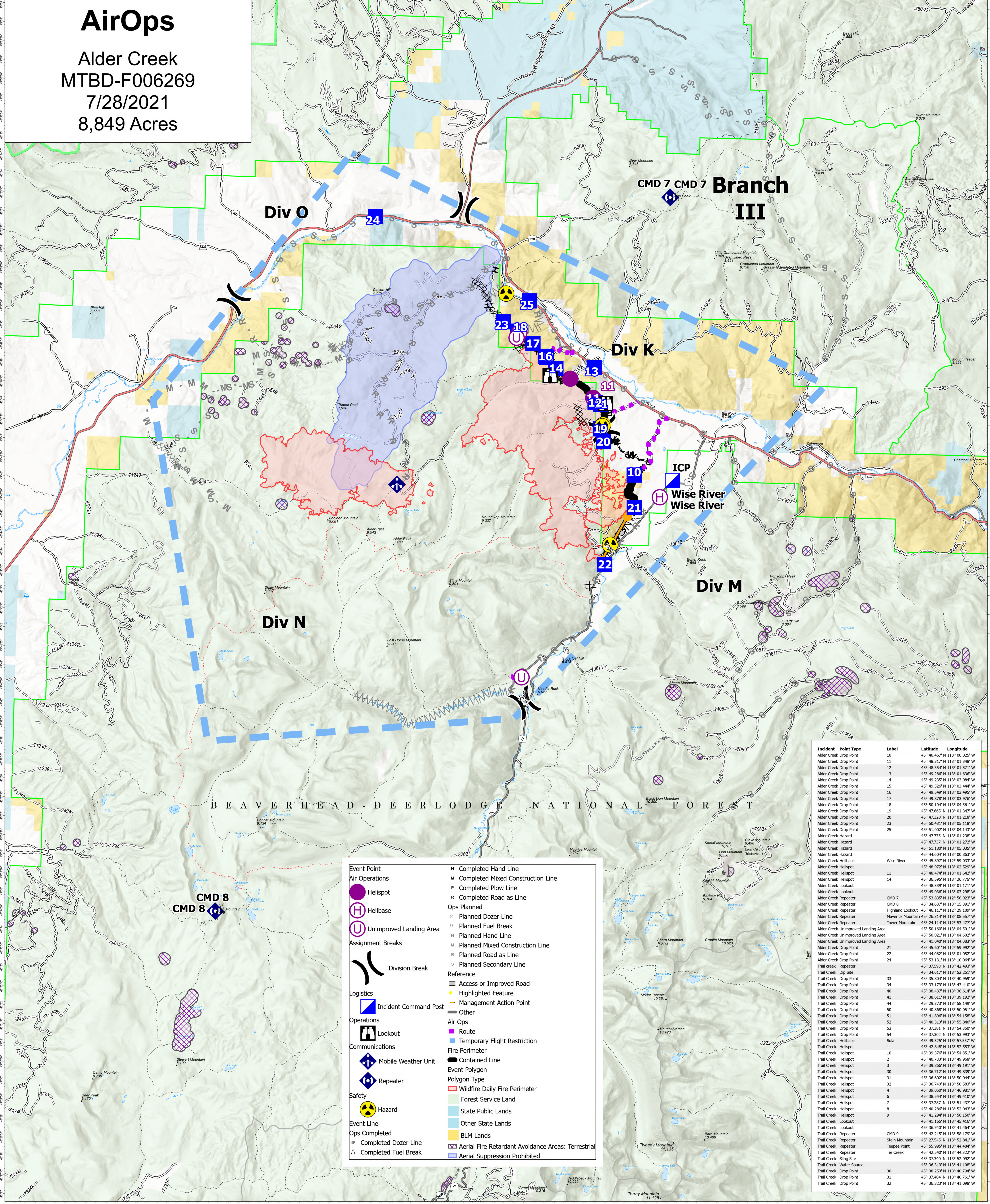


# AirOps

Alder Creek  
MTBD-F006269  
7/28/2021  
8,849 Acres



BEAVERHEAD - DEER LODGE NATIONAL FOREST

<ul style="list-style-type: none"> <li>Event Point</li> <li>Air Operations</li> <li>Helispot</li> <li>Helibase</li> <li>Unimproved Landing Area</li> <li>Assignment Breaks</li> <li>Division Break</li> <li>Logistics</li> <li>Incident Command Post</li> <li>Operations</li> <li>Lookout</li> <li>Communications</li> <li>Mobile Weather Unit</li> <li>Repeater</li> <li>Safety</li> <li>Hazard</li> <li>Event Line</li> <li>Ops Completed</li> <li>Completed Dozer Line</li> <li>Completed Fuel Break</li> </ul>	<ul style="list-style-type: none"> <li>Completed Hand Line</li> <li>Completed Mixed Construction Line</li> <li>Completed Plow Line</li> <li>Completed Road as Line</li> <li>Ops Planned</li> <li>Planned Dozer Line</li> <li>Planned Fuel Break</li> <li>Planned Hand Line</li> <li>Planned Mixed Construction Line</li> <li>Planned Road as Line</li> <li>Planned Secondary Line</li> <li>Reference</li> <li>Access or Improved Road</li> <li>Highlighted Feature</li> <li>Management Action Point</li> <li>Other</li> <li>Air Ops</li> <li>Route</li> <li>Temporary Flight Restriction</li> <li>Fire Perimeter</li> <li>Contained Line</li> <li>Event Polygon</li> <li>Polygon Type</li> <li>Wildfire Daily Fire Perimeter</li> <li>State Public Lands</li> <li>Other State Lands</li> <li>BLM Lands</li> <li>Aerial Fire Retardant Avoidance Areas: Terrestrial</li> <li>Aerial Suppression Prohibited</li> </ul>
--	--

Incident	Point Type	Label	Latitude	Longitude
Alder Creek Drop Point		10	45° 46.467' N 113° 00.025' W	
Alder Creek Drop Point		11	45° 48.317' N 113° 01.348' W	
Alder Creek Drop Point		12	45° 48.354' N 113° 01.571' W	
Alder Creek Drop Point		13	45° 49.286' N 113° 01.638' W	
Alder Creek Drop Point		14	45° 49.235' N 113° 03.084' W	
Alder Creek Drop Point		15	45° 49.526' N 113° 03.444' W	
Alder Creek Drop Point		16	45° 49.549' N 113° 03.495' W	
Alder Creek Drop Point		17	45° 49.878' N 113° 03.970' W	
Alder Creek Drop Point		18	45° 50.194' N 113° 04.561' W	
Alder Creek Drop Point		19	45° 51.117' N 113° 01.347' W	
Alder Creek Drop Point		20	45° 47.328' N 113° 01.218' W	
Alder Creek Drop Point		23	45° 50.431' N 113° 05.118' W	
Alder Creek Drop Point		25	45° 51.002' N 113° 04.143' W	
Alder Creek Hazard			45° 47.775' N 113° 01.239' W	
Alder Creek Hazard			45° 47.737' N 113° 01.272' W	
Alder Creek Hazard			45° 51.180' N 113° 05.035' W	
Alder Creek Hazard			45° 44.604' N 113° 00.865' W	
Alder Creek Helibase	Wise River		45° 48.977' N 113° 05.033' W	
Alder Creek Helispot			45° 48.972' N 113° 02.529' W	
Alder Creek Helispot		11	45° 48.474' N 113° 01.642' W	
Alder Creek Helispot		14	45° 36.585' N 113° 26.770' W	
Alder Creek Lookout			45° 48.339' N 113° 01.171' W	
Alder Creek Lookout			45° 49.036' N 113° 03.298' W	
Alder Creek Repeater	CMD 7		45° 53.835' N 112° 58.923' W	
Alder Creek Repeater	CMD 8		45° 34.637' N 113° 15.391' W	
Alder Creek Repeater	Highland Lookout		45° 46.177' N 113° 26.109' W	
Alder Creek Repeater	Haverock Mountain		45° 26.314' N 113° 08.557' W	
Alder Creek Repeater	Tower Mountain		45° 24.114' N 112° 53.477' W	
Alder Creek Unimproved Landing Area			45° 50.160' N 113° 04.501' W	
Alder Creek Unimproved Landing Area			45° 50.021' N 113° 04.602' W	
Alder Creek Unimproved Landing Area			45° 41.040' N 113° 04.083' W	
Alder Creek Drop Point		21	45° 45.601' N 113° 50.993' W	
Alder Creek Drop Point		22	45° 44.082' N 113° 01.052' W	
Alder Creek Drop Point		24	45° 53.131' N 113° 10.064' W	
Trail Creek Repeater			45° 37.593' N 113° 42.493' W	
Trail Creek Dip Site			45° 34.617' N 113° 52.251' W	
Trail Creek Drop Point		33	45° 35.804' N 113° 40.959' W	
Trail Creek Drop Point		34	45° 32.179' N 113° 43.410' W	
Trail Creek Drop Point		40	45° 38.437' N 113° 38.614' W	
Trail Creek Drop Point		41	45° 38.611' N 113° 39.192' W	
Trail Creek Drop Point		44	45° 29.373' N 113° 58.149' W	
Trail Creek Drop Point		50	45° 40.868' N 113° 50.051' W	
Trail Creek Drop Point		51	45° 41.865' N 113° 54.158' W	
Trail Creek Drop Point		52	45° 40.313' N 113° 55.840' W	
Trail Creek Drop Point		53	45° 37.811' N 113° 54.350' W	
Trail Creek Drop Point		54	45° 37.302' N 113° 53.993' W	
Trail Creek Helibase	Sula		45° 49.325' N 113° 57.557' W	
Trail Creek Helispot	1		45° 42.848' N 113° 52.553' W	
Trail Creek Helispot	10		45° 33.716' N 113° 54.851' W	
Trail Creek Helispot	2		45° 40.783' N 113° 49.968' W	
Trail Creek Helispot	3		45° 39.866' N 113° 49.191' W	
Trail Creek Helispot	30		45° 36.712' N 113° 49.839' W	
Trail Creek Helispot	31		45° 36.602' N 113° 50.044' W	
Trail Creek Helispot	32		45° 36.740' N 113° 50.580' W	
Trail Creek Helispot	4		45° 39.050' N 113° 46.981' W	
Trail Creek Helispot	6		45° 38.544' N 113° 49.410' W	
Trail Creek Helispot	7		45° 37.287' N 113° 51.437' W	
Trail Creek Helispot	8		45° 40.286' N 113° 52.043' W	
Trail Creek Helispot	9		45° 41.294' N 113° 56.150' W	
Trail Creek Lookout			45° 41.651' N 113° 45.410' W	
Trail Creek Lookout			45° 36.740' N 113° 41.464' W	
Trail Creek Repeater	CMD 9		45° 42.215' N 113° 58.179' W	
Trail Creek Repeater	Stein Mountain		45° 27.545' N 113° 52.841' W	
Trail Creek Repeater	Tepee Point		45° 55.995' N 113° 44.484' W	
Trail Creek Repeater	The Creek		45° 42.540' N 113° 44.322' W	
Trail Creek Site			45° 37.847' N 113° 45.092' W	
Trail Creek Water Source			45° 36.319' N 113° 41.108' W	
Trail Creek Drop Point		30	45° 38.253' N 113° 40.794' W	
Trail Creek Drop Point		31	45° 37.404' N 113° 40.761' W	
Trail Creek Drop Point		32	45° 36.323' N 113° 41.098' W	

### Flight Restriction Information

Alder Creek - 1/2315 - 12,500ft ceiling  
Trail Creek - 1/2310 - 12,500ft ceiling



Fire perimeter updated from Acres from IR on 07/26/21 19:45

