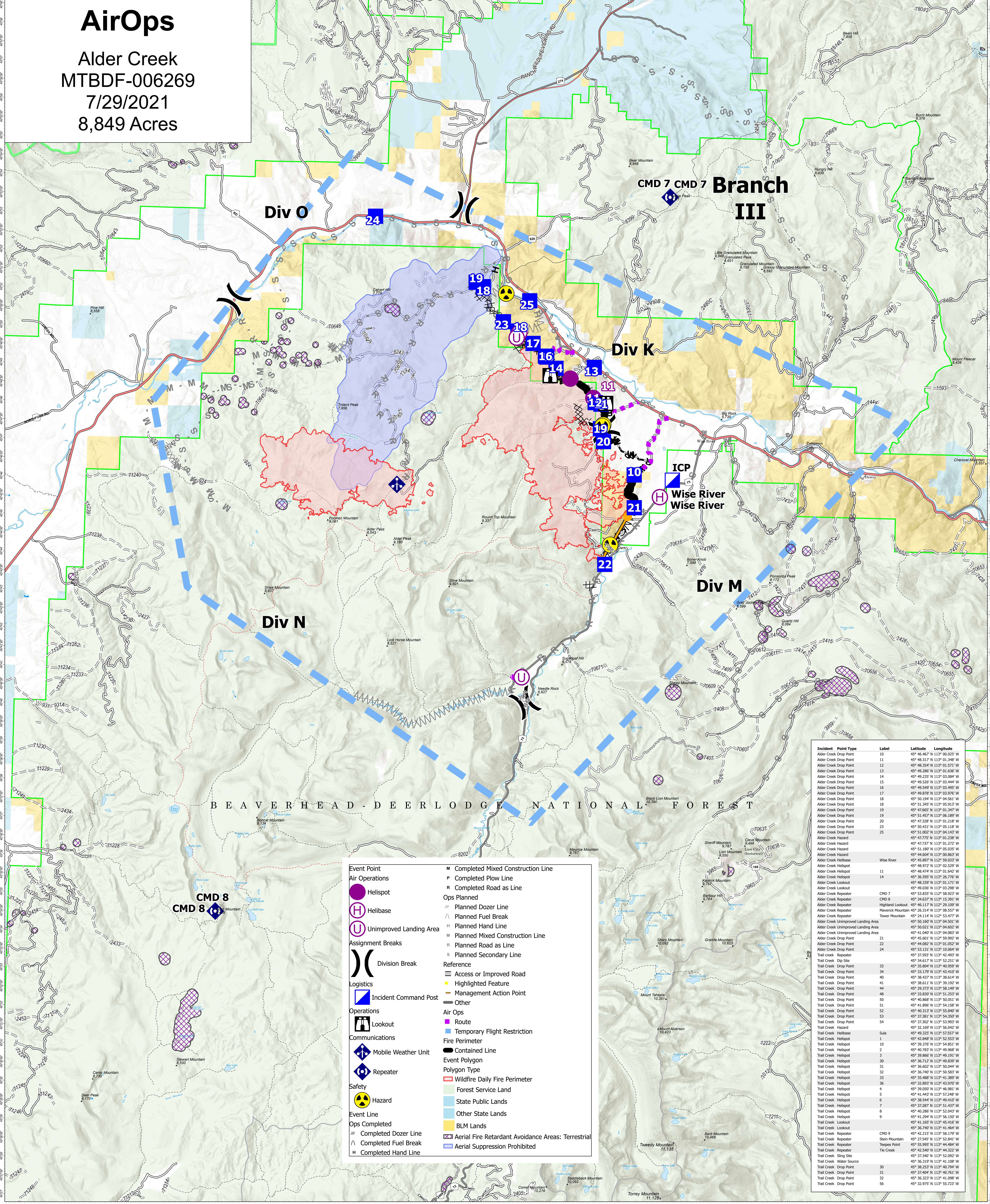


AirOps

Alder Creek
MTBDF-006269
7/29/2021
8,849 Acres



BEAVERHEAD - DEER LODGE NATIONAL FOREST

Event Point	Completed Mixed Construction Line
Air Operations	Completed Plow Line
Helispot	Completed Road as Line
Helibase	Planned Dozer Line
Unimproved Landing Area	Planned Fuel Break
Assignment Breaks	Planned Hand Line
Division Break	Planned Mixed Construction Line
Logistics	Planned Road as Line
Incident Command Post	Planned Secondary Line
Operations	Reference
Lookout	Access or Improved Road
Communications	Highlighted Feature
Mobile Weather Unit	Management Action Point
Repeater	Other
Safety	Air Ops
Hazard	Route
Event Line	Temporary Flight Restriction
Completed Dozer Line	Fire Perimeter
Completed Fuel Break	Contained Line
Completed Hand Line	Event Polygon
	Polygon Type
	Wildfire Daily Fire Perimeter
	Forest Service Land
	State Public Lands
	Other State Lands
	BLM Lands
	Aerial Fire Retardant Avoidance Areas: Terrestrial
	Aerial Suppression Prohibited

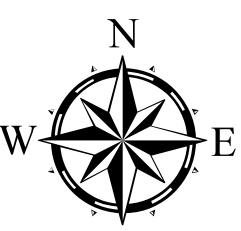
Incident	Point Type	Label	Latitude	Longitude
Alder Creek	Drop Point	10	45° 46.467' N 113° 00.025' W	
Alder Creek	Drop Point	11	45° 48.317' N 113° 01.348' W	
Alder Creek	Drop Point	12	45° 48.364' N 113° 01.571' W	
Alder Creek	Drop Point	13	45° 49.286' N 113° 01.636' W	
Alder Creek	Drop Point	14	45° 49.235' N 113° 03.084' W	
Alder Creek	Drop Point	15	45° 49.526' N 113° 03.444' W	
Alder Creek	Drop Point	16	45° 49.549' N 113° 03.495' W	
Alder Creek	Drop Point	17	45° 49.878' N 113° 03.976' W	
Alder Creek	Drop Point	18	45° 50.194' N 113° 04.561' W	
Alder Creek	Drop Point	19	45° 51.345' N 113° 05.915' W	
Alder Creek	Drop Point	19	45° 47.665' N 113° 03.347' W	
Alder Creek	Drop Point	19	45° 51.457' N 113° 06.189' W	
Alder Creek	Drop Point	20	45° 47.328' N 113° 01.218' W	
Alder Creek	Drop Point	21	45° 50.431' N 113° 05.118' W	
Alder Creek	Drop Point	25	45° 51.002' N 113° 04.143' W	
Alder Creek	Hazard		45° 47.775' N 113° 01.238' W	
Alder Creek	Hazard		45° 47.737' N 113° 01.272' W	
Alder Creek	Hazard		45° 51.185' N 113° 05.023' W	
Alder Creek	Hazard		45° 44.604' N 113° 00.863' W	
Alder Creek	Helibase	Wise River	45° 45.897' N 112° 59.033' W	
Alder Creek	Helispot		45° 48.972' N 113° 02.529' W	
Alder Creek	Helispot	11	45° 48.978' N 113° 01.642' W	
Alder Creek	Helispot	14	45° 36.995' N 113° 26.776' W	
Alder Creek	Lookout		45° 48.339' N 113° 01.171' W	
Alder Creek	Lookout		45° 49.036' N 113° 03.298' W	
Alder Creek	Repeater	CMD 7	45° 49.375' N 113° 05.922' W	
Alder Creek	Repeater	CMD 8	45° 34.637' N 113° 15.391' W	
Alder Creek	Repeater	Highland Lookout	45° 46.117' N 113° 29.109' W	
Alder Creek	Repeater	Maverick Mountain	45° 26.314' N 113° 06.557' W	
Alder Creek	Repeater	Tower Mountain	45° 24.114' N 113° 53.477' W	
Alder Creek	Unimproved Landing Area		45° 50.169' N 113° 04.501' W	
Alder Creek	Unimproved Landing Area		45° 50.021' N 113° 04.602' W	
Alder Creek	Unimproved Landing Area		45° 41.047' N 113° 06.003' W	
Alder Creek	Drop Point	21	45° 45.601' N 112° 59.992' W	
Alder Creek	Drop Point	22	45° 44.082' N 113° 01.052' W	
Alder Creek	Drop Point	24	45° 53.131' N 113° 10.064' W	
Trail Creek	Drop Point	33	45° 37.993' N 113° 42.493' W	
Trail Creek	Drop Point	34	45° 38.437' N 113° 43.410' W	
Trail Creek	Drop Point	40	45° 38.637' N 113° 36.824' W	
Trail Creek	Drop Point	41	45° 38.611' N 113° 39.182' W	
Trail Creek	Drop Point	44	45° 29.373' N 113° 58.149' W	
Trail Creek	Drop Point	48	45° 33.830' N 113° 51.253' W	
Trail Creek	Drop Point	50	45° 40.865' N 113° 06.053' W	
Trail Creek	Drop Point	51	45° 41.896' N 113° 54.158' W	
Trail Creek	Drop Point	52	45° 40.313' N 113° 55.840' W	
Trail Creek	Drop Point	53	45° 37.281' N 113° 54.350' W	
Trail Creek	Drop Point	54	45° 33.302' N 113° 53.993' W	
Trail Creek	Hazard		45° 32.169' N 113° 56.042' W	
Trail Creek	Helibase	Sula	45° 49.325' N 113° 57.557' W	
Trail Creek	Helispot	1	45° 42.848' N 113° 52.553' W	
Trail Creek	Helispot	10	45° 39.376' N 113° 46.851' W	
Trail Creek	Helispot	2	45° 40.783' N 113° 49.968' W	
Trail Creek	Helispot	3	45° 39.866' N 113° 49.191' W	
Trail Creek	Helispot	30	45° 36.212' N 113° 46.839' W	
Trail Creek	Helispot	31	45° 36.602' N 113° 50.044' W	
Trail Creek	Helispot	32	45° 36.740' N 113° 50.583' W	
Trail Creek	Helispot	33	45° 35.488' N 113° 41.389' W	
Trail Creek	Helispot	36	45° 32.893' N 113° 43.970' W	
Trail Creek	Helispot	4	45° 39.050' N 113° 46.981' W	
Trail Creek	Helispot	5	45° 41.443' N 113° 57.248' W	
Trail Creek	Helispot	6	45° 38.544' N 113° 49.410' W	
Trail Creek	Helispot	7	45° 41.284' N 113° 52.043' W	
Trail Creek	Helispot	8	45° 40.286' N 113° 52.043' W	
Trail Creek	Helispot	9	45° 41.294' N 113° 56.150' W	
Trail Creek	Lookout		45° 41.165' N 113° 45.418' W	
Trail Creek	Lookout		45° 36.740' N 113° 41.464' W	
Trail Creek	Repeater	CMD 9	45° 42.215' N 113° 58.179' W	
Trail Creek	Repeater	Stain Mountain	45° 27.545' N 113° 52.841' W	
Trail Creek	Repeater	Tepee Point	45° 35.995' N 113° 44.484' W	
Trail Creek	Repeater	The Creek	45° 42.540' N 113° 43.222' W	
Trail Creek	Sling Site		45° 37.340' N 113° 52.092' W	
Trail Creek	Water Source		45° 36.319' N 113° 41.108' W	
Trail Creek	Drop Point	30	45° 38.253' N 113° 40.791' W	
Trail Creek	Drop Point	31	45° 37.404' N 113° 40.791' W	
Trail Creek	Drop Point	32	45° 36.323' N 113° 41.098' W	
Trail Creek	Drop Point	56	45° 32.975' N 113° 55.722' W	

Flight Restriction Information

Alder Creek - 1/2315 - 12,500ft ceiling
Trail Creek - 1/2310 - 12,500ft ceiling



SW Team 1
7/28/2021 2039
North American 1983 Datum. LatLong Grid



Fire perimeter updated from
Acres from IR on 07/26/21 19:45

