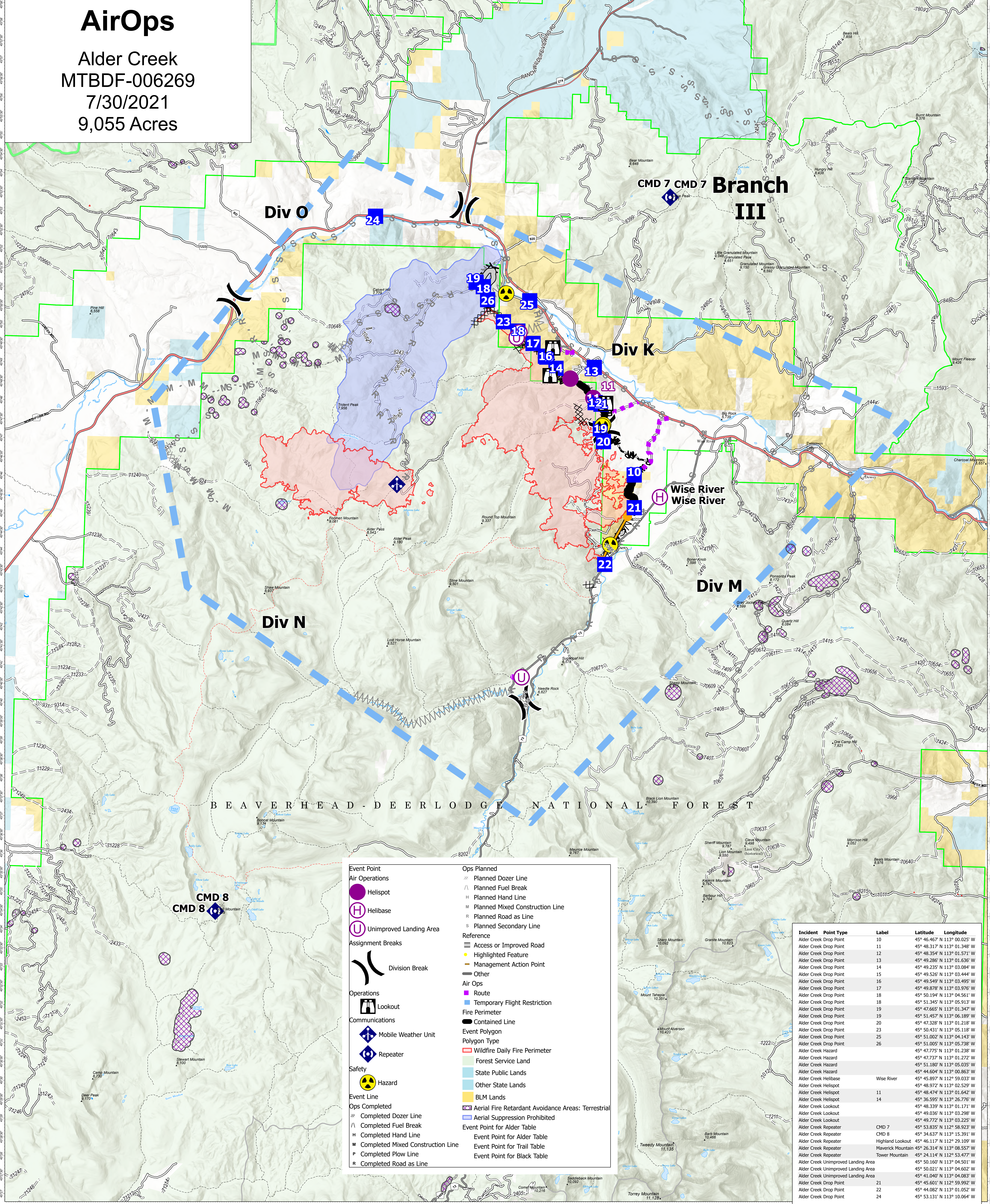


# AirOps

Alder Creek  
MTBDF-006269  
7/30/2021  
9,055 Acres

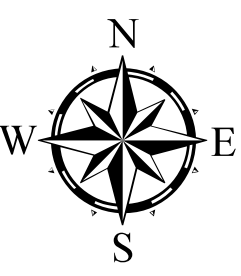


<b>Event Point</b>	<b>Ops Planned</b>
Air Operations	Planned Dozer Line
Helispot	Planned Fuel Break
Helibase	Planned Hand Line
Unimproved Landing Area	Planned Mixed Construction Line
<b>Assignment Breaks</b>	Planned Road as Line
Division Break	Planned Secondary Line
<b>Operations</b>	<b>Reference</b>
Lookout	Access or Improved Road
<b>Communications</b>	Highlighted Feature
Mobile Weather Unit	Management Action Point
Repeater	Other
<b>Safety</b>	<b>Air Ops</b>
Hazard	Route
<b>Event Line</b>	Temporary Flight Restriction
<b>Ops Completed</b>	Fire Perimeter
Completed Dozer Line	Contained Line
Completed Fuel Break	<b>Event Polygon</b>
Completed Hand Line	Wildfire Daily Fire Perimeter
Completed Mixed Construction Line	Forest Service Land
Completed Plow Line	State Public Lands
Completed Road as Line	Other State Lands
	BLM Lands
	Aerial Fire Retardant Avoidance Areas: Terrestrial
	Aerial Suppression Prohibited
	<b>Event Point for Alder Table</b>
	<b>Event Point for Trail Table</b>
	<b>Event Point for Black Table</b>

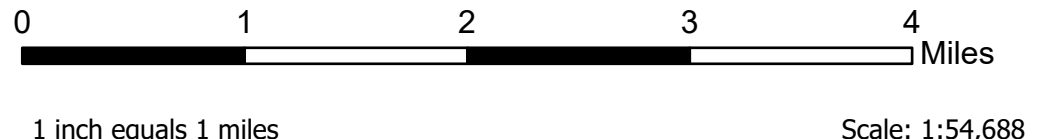
Incident Point Type	Label	Latitude	Longitude
Alder Creek Drop Point	10	45° 46.467' N 113° 00.025' W	
Alder Creek Drop Point	11	45° 48.317' N 113° 01.348' W	
Alder Creek Drop Point	12	45° 48.354' N 113° 01.571' W	
Alder Creek Drop Point	13	45° 49.286' N 113° 01.636' W	
Alder Creek Drop Point	14	45° 49.235' N 113° 03.084' W	
Alder Creek Drop Point	15	45° 49.526' N 113° 03.444' W	
Alder Creek Drop Point	16	45° 49.549' N 113° 03.495' W	
Alder Creek Drop Point	17	45° 49.878' N 113° 03.976' W	
Alder Creek Drop Point	18	45° 50.194' N 113° 04.561' W	
Alder Creek Drop Point	18	45° 51.345' N 113° 05.913' W	
Alder Creek Drop Point	19	45° 47.665' N 113° 01.347' W	
Alder Creek Drop Point	19	45° 51.457' N 113° 06.189' W	
Alder Creek Drop Point	20	45° 47.328' N 113° 01.218' W	
Alder Creek Drop Point	23	45° 50.431' N 113° 05.118' W	
Alder Creek Drop Point	25	45° 51.002' N 113° 04.143' W	
Alder Creek Drop Point	26	45° 51.005' N 113° 05.738' W	
Alder Creek Hazard		45° 47.775' N 113° 01.238' W	
Alder Creek Hazard		45° 47.737' N 113° 01.272' W	
Alder Creek Hazard		45° 51.180' N 113° 05.035' W	
Alder Creek Hazard		45° 44.604' N 113° 00.863' W	
Alder Creek Helibase	Wise River	45° 45.897' N 112° 59.033' W	
Alder Creek Helispot		45° 48.972' N 113° 02.529' W	
Alder Creek Helispot	11	45° 48.474' N 113° 01.642' W	
Alder Creek Helispot	14	45° 36.595' N 113° 26.776' W	
Alder Creek Lookout		45° 48.339' N 113° 01.171' W	
Alder Creek Lookout		45° 49.036' N 113° 03.298' W	
Alder Creek Lookout		45° 49.772' N 113° 03.225' W	
Alder Creek Repeater	CMD 7	45° 53.835' N 112° 58.923' W	
Alder Creek Repeater	CMD 8	45° 34.637' N 113° 15.391' W	
Alder Creek Repeater	Highland Lookout	45° 46.117' N 112° 29.109' W	
Alder Creek Repeater	Maverick Mountain	45° 26.314' N 113° 08.557' W	
Alder Creek Repeater	Tower Mountain	45° 24.114' N 112° 53.477' W	
Alder Creek Unimproved Landing Area		45° 50.160' N 113° 04.501' W	
Alder Creek Unimproved Landing Area		45° 50.021' N 113° 04.602' W	
Alder Creek Unimproved Landing Area		45° 41.040' N 113° 04.083' W	
Alder Creek Drop Point	21	45° 45.601' N 112° 59.992' W	
Alder Creek Drop Point	22	45° 44.082' N 113° 01.052' W	
Alder Creek Drop Point	24	45° 53.131' N 113° 10.064' W	

### Flight Restriction Information

Alder Creek - 1/7629- 12,500ft ceiling  
Trail Creek - 1/7630 - 11,500ft ceiling  
Black Mountain - 1/1730 - 10,500ft ceiling



Fire perimeter updated from  
Acres Hand Drawn on 07/29/21 07:55



SW Team 1  
7/29/2021 09:05  
North American 1983 Datum. LatLong Grid