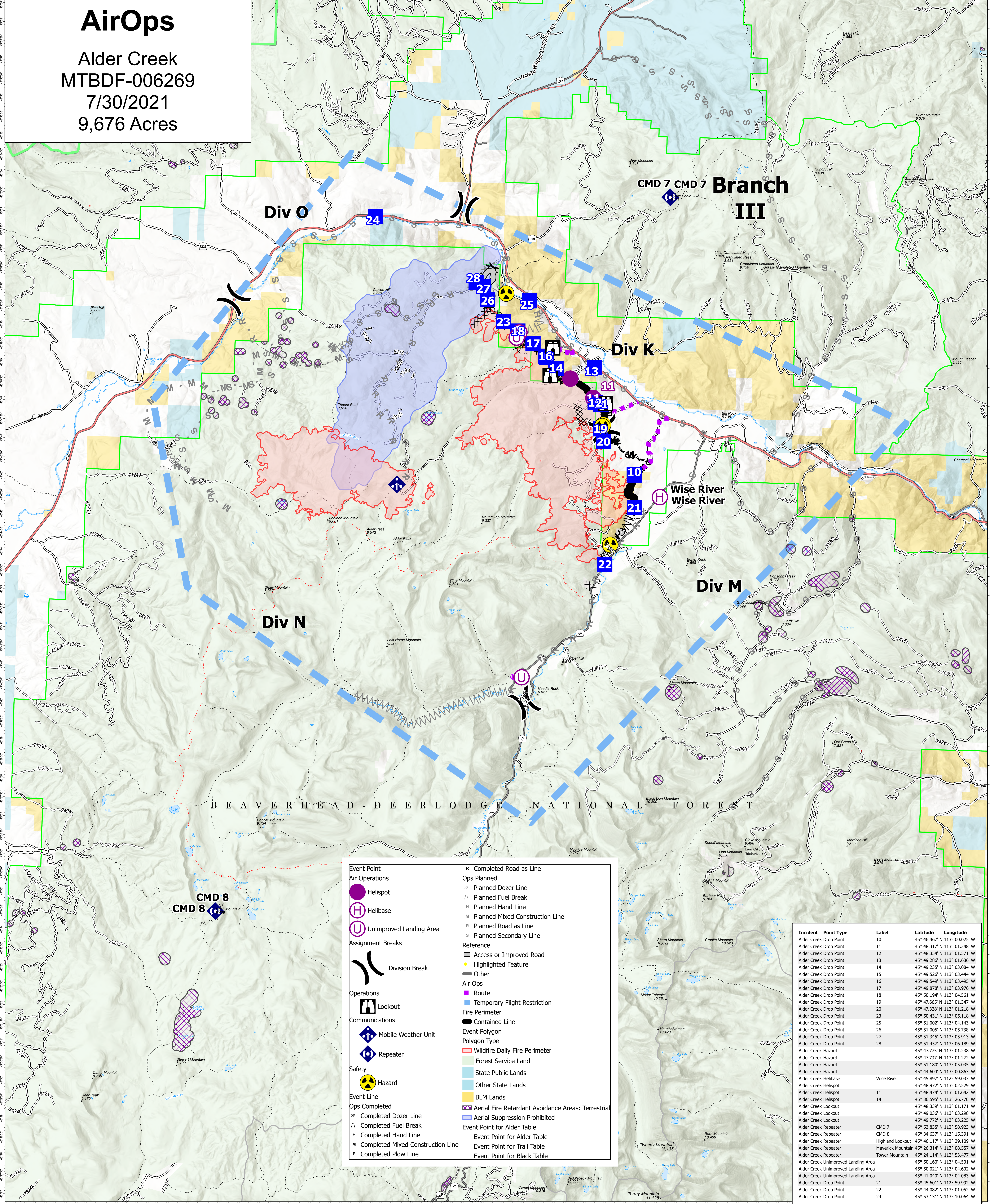


AirOps

Alder Creek
MTBDF-006269
7/30/2021
9,676 Acres



CMD 7 CMD 7 Branch III

Div O

Div K

Div M

Div N

Wise River
Wise River

BEAVERHEAD-DEERLODGE NATIONAL FOREST

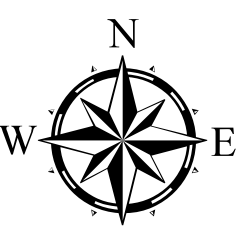
CMD 8
CMD 8

Event Point		Reference	
● Helispot	○ Helibase	▬ Access or Improved Road	● Highlighted Feature
○ Unimproved Landing Area	▬ Division Break	▬ Other	▬ Air Ops
Assignment Breaks		▬ Route	▬ Temporary Flight Restriction
▬ Lookout	▬ Mobile Weather Unit	▬ Fire Perimeter	▬ Contained Line
▬ Repeater	▬ Repeater	▬ Event Polygon	▬ Polygon Type
▬ Hazard	▬ Safety	▬ Wildfire Daily Fire Perimeter	▬ Forest Service Land
▬ Ops Completed	▬ Ops Completed	▬ State Public Lands	▬ Other State Lands
▬ Completed Dozer Line	▬ Completed Fuel Break	▬ BLM Lands	▬ Aerial Fire Retardant Avoidance Areas: Terrestrial
▬ Completed Hand Line	▬ Completed Mixed Construction Line	▬ Event Point for Alder Table	▬ Event Point for Trail Table
▬ Completed Plow Line	▬ Completed Road as Line	▬ Event Point for Black Table	

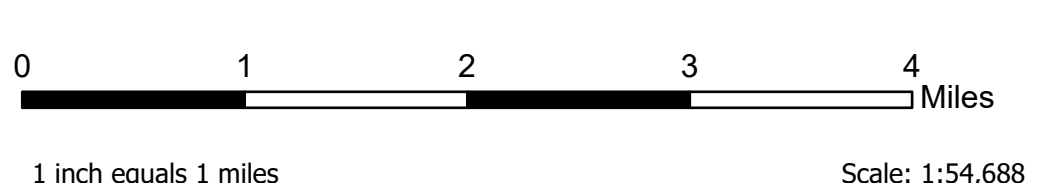
Incident Point Type	Label	Latitude	Longitude
Alder Creek Drop Point	10	45° 46.467' N 113° 00.025' W	
Alder Creek Drop Point	11	45° 48.317' N 113° 01.348' W	
Alder Creek Drop Point	12	45° 48.354' N 113° 01.571' W	
Alder Creek Drop Point	13	45° 49.286' N 113° 01.636' W	
Alder Creek Drop Point	14	45° 49.235' N 113° 03.084' W	
Alder Creek Drop Point	15	45° 49.526' N 113° 03.444' W	
Alder Creek Drop Point	16	45° 49.549' N 113° 03.495' W	
Alder Creek Drop Point	17	45° 49.878' N 113° 03.976' W	
Alder Creek Drop Point	18	45° 50.194' N 113° 04.561' W	
Alder Creek Drop Point	19	45° 47.665' N 113° 01.347' W	
Alder Creek Drop Point	20	45° 47.328' N 113° 01.218' W	
Alder Creek Drop Point	23	45° 50.431' N 113° 05.118' W	
Alder Creek Drop Point	25	45° 51.002' N 113° 04.143' W	
Alder Creek Drop Point	26	45° 51.005' N 113° 05.738' W	
Alder Creek Drop Point	27	45° 51.345' N 113° 05.913' W	
Alder Creek Drop Point	28	45° 51.457' N 113° 06.189' W	
Alder Creek Hazard		45° 47.775' N 113° 01.238' W	
Alder Creek Hazard		45° 47.737' N 113° 01.272' W	
Alder Creek Hazard		45° 51.180' N 113° 05.035' W	
Alder Creek Hazard		45° 44.604' N 113° 00.863' W	
Alder Creek Helibase	Wise River	45° 45.897' N 112° 59.033' W	
Alder Creek Helispot		45° 48.972' N 113° 02.529' W	
Alder Creek Helispot	11	45° 48.474' N 113° 01.642' W	
Alder Creek Helispot	14	45° 36.595' N 113° 26.776' W	
Alder Creek Lookout		45° 48.339' N 113° 01.171' W	
Alder Creek Lookout		45° 49.036' N 113° 03.298' W	
Alder Creek Lookout		45° 49.772' N 113° 03.225' W	
Alder Creek Repeater	CMD 7	45° 53.835' N 112° 58.923' W	
Alder Creek Repeater	CMD 8	45° 34.637' N 113° 15.391' W	
Alder Creek Repeater	Highland Lookout	45° 46.117' N 112° 29.109' W	
Alder Creek Repeater	Maverick Mountain	45° 26.314' N 113° 08.557' W	
Alder Creek Repeater	Tower Mountain	45° 24.114' N 112° 53.477' W	
Alder Creek Unimproved Landing Area		45° 50.160' N 113° 04.501' W	
Alder Creek Unimproved Landing Area		45° 50.021' N 113° 04.602' W	
Alder Creek Unimproved Landing Area		45° 41.040' N 113° 04.083' W	
Alder Creek Drop Point	21	45° 45.601' N 112° 59.992' W	
Alder Creek Drop Point	22	45° 44.082' N 113° 01.052' W	
Alder Creek Drop Point	24	45° 53.131' N 113° 10.064' W	

Flight Restriction Information

Alder Creek - 1/7629- 12,500ft ceiling
Trail Creek - 1/7630 - 11,500ft ceiling
Black Mountain - 1/1730 - 10,500ft ceiling



Fire perimeter updated from
Acres from IR on 07/29/21 22:00



SW Team 1
7/30/2021 0950
North American 1983 Datum. LatLong Grid