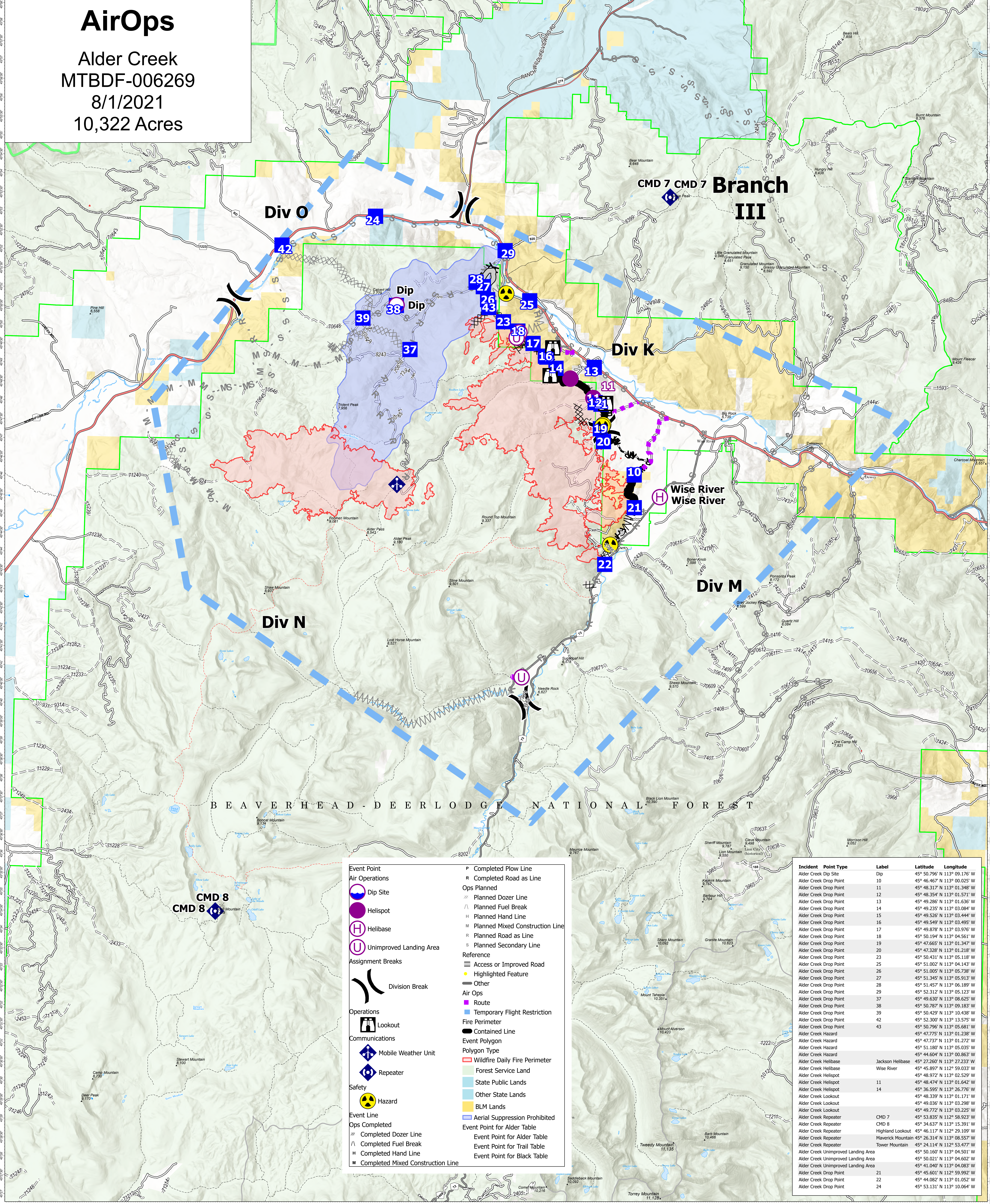


AirOps

Alder Creek
MTBDF-006269
8/1/2021
10,322 Acres



CMD 7 CMD 7 Branch III

Div O

Div K

Div M

Div N

Wise River
Wise River

BEAVERHEAD-DEERLODGE NATIONAL FOREST

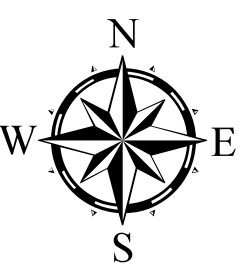
CMD 8
CMD 8

Event Point	P Completed Plow Line
Air Operations	R Completed Road as Line
Dip Site	Ops Planned
Helispot	Planned Dozer Line
Helibase	Planned Fuel Break
Unimproved Landing Area	Planned Hand Line
Assignment Breaks	Planned Mixed Construction Line
Division Break	Planned Road as Line
Operations	Planned Secondary Line
Fire Perimeter	Reference
Lookout	Access or Improved Road
Mobile Weather Unit	Highlighted Feature
Repeater	Other
Safety	Air Ops
Hazard	Route
Event Line	Temporary Flight Restriction
Ops Completed	Fire Perimeter
Completed Dozer Line	Event Polygon
Completed Fuel Break	Polygon Type
Completed Hand Line	Wildfire Daily Fire Perimeter
Completed Mixed Construction Line	Forest Service Land
	State Public Lands
	Other State Lands
	BLM Lands
	Aerial Suppression Prohibited
	Event Point for Alder Table
	Event Point for Trail Table
	Event Point for Black Table

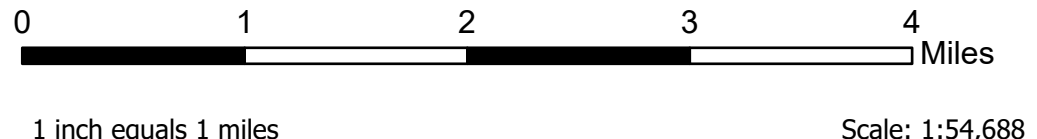
Incident Point Type	Label	Latitude	Longitude
Alder Creek Dip Site	Dip	45° 50.796' N 113° 09.176' W	
Alder Creek Drop Point	10	45° 46.467' N 113° 00.025' W	
Alder Creek Drop Point	11	45° 48.317' N 113° 01.349' W	
Alder Creek Drop Point	12	45° 48.354' N 113° 01.571' W	
Alder Creek Drop Point	13	45° 49.286' N 113° 01.636' W	
Alder Creek Drop Point	14	45° 49.235' N 113° 03.084' W	
Alder Creek Drop Point	15	45° 49.526' N 113° 03.444' W	
Alder Creek Drop Point	16	45° 49.549' N 113° 03.495' W	
Alder Creek Drop Point	17	45° 49.878' N 113° 03.976' W	
Alder Creek Drop Point	18	45° 50.194' N 113° 04.561' W	
Alder Creek Drop Point	19	45° 47.665' N 113° 01.347' W	
Alder Creek Drop Point	20	45° 47.328' N 113° 01.218' W	
Alder Creek Drop Point	23	45° 50.431' N 113° 05.118' W	
Alder Creek Drop Point	25	45° 51.002' N 113° 04.143' W	
Alder Creek Drop Point	26	45° 51.005' N 113° 05.738' W	
Alder Creek Drop Point	27	45° 51.345' N 113° 05.913' W	
Alder Creek Drop Point	28	45° 51.457' N 113° 06.189' W	
Alder Creek Drop Point	29	45° 52.312' N 113° 05.123' W	
Alder Creek Drop Point	37	45° 49.630' N 113° 08.625' W	
Alder Creek Drop Point	38	45° 50.787' N 113° 09.183' W	
Alder Creek Drop Point	39	45° 50.429' N 113° 10.438' W	
Alder Creek Drop Point	42	45° 52.300' N 113° 13.575' W	
Alder Creek Drop Point	43	45° 50.796' N 113° 05.681' W	
Alder Creek Hazard		45° 47.775' N 113° 01.238' W	
Alder Creek Hazard		45° 47.737' N 113° 01.272' W	
Alder Creek Hazard		45° 51.180' N 113° 05.035' W	
Alder Creek Hazard		45° 44.604' N 113° 00.863' W	
Alder Creek Helibase	Jackson Helibase	45° 27.260' N 113° 05.233' W	
Alder Creek Helibase	Wise River	45° 45.897' N 113° 05.033' W	
Alder Creek Helispot		45° 48.972' N 113° 02.529' W	
Alder Creek Helispot	11	45° 48.474' N 113° 01.642' W	
Alder Creek Helispot	14	45° 36.955' N 113° 26.776' W	
Alder Creek Lookout		45° 48.339' N 113° 01.171' W	
Alder Creek Lookout		45° 49.036' N 113° 03.298' W	
Alder Creek Repeater		45° 49.772' N 113° 03.225' W	
Alder Creek Repeater	CMD 7	45° 53.835' N 112° 58.923' W	
Alder Creek Repeater	CMD 8	45° 34.637' N 113° 15.391' W	
Alder Creek Repeater	Highland Lookout	45° 46.117' N 112° 29.109' W	
Alder Creek Repeater	Maverick Mountain	45° 26.314' N 113° 08.557' W	
Alder Creek Repeater	Tower Mountain	45° 24.114' N 112° 53.477' W	
Alder Creek Unimproved Landing Area		45° 50.167' N 113° 04.501' W	
Alder Creek Unimproved Landing Area		45° 50.021' N 113° 04.602' W	
Alder Creek Unimproved Landing Area		45° 41.040' N 113° 04.083' W	
Alder Creek Drop Point	21	45° 45.601' N 112° 59.992' W	
Alder Creek Drop Point	22	45° 44.082' N 113° 01.052' W	
Alder Creek Drop Point	24	45° 53.131' N 113° 10.064' W	

Flight Restriction Information

Alder Creek - 1/7629- 12,500ft ceiling
Trail Creek - 1/7630 - 11,500ft ceiling
Black Mountain - 1/1730 - 10,500ft ceiling



Fire perimeter updated from
Acres from IR on 07/31/21 00:05



SW Team 1
7/31/2021 1920
North American 1983 Datum. LatLong Grid