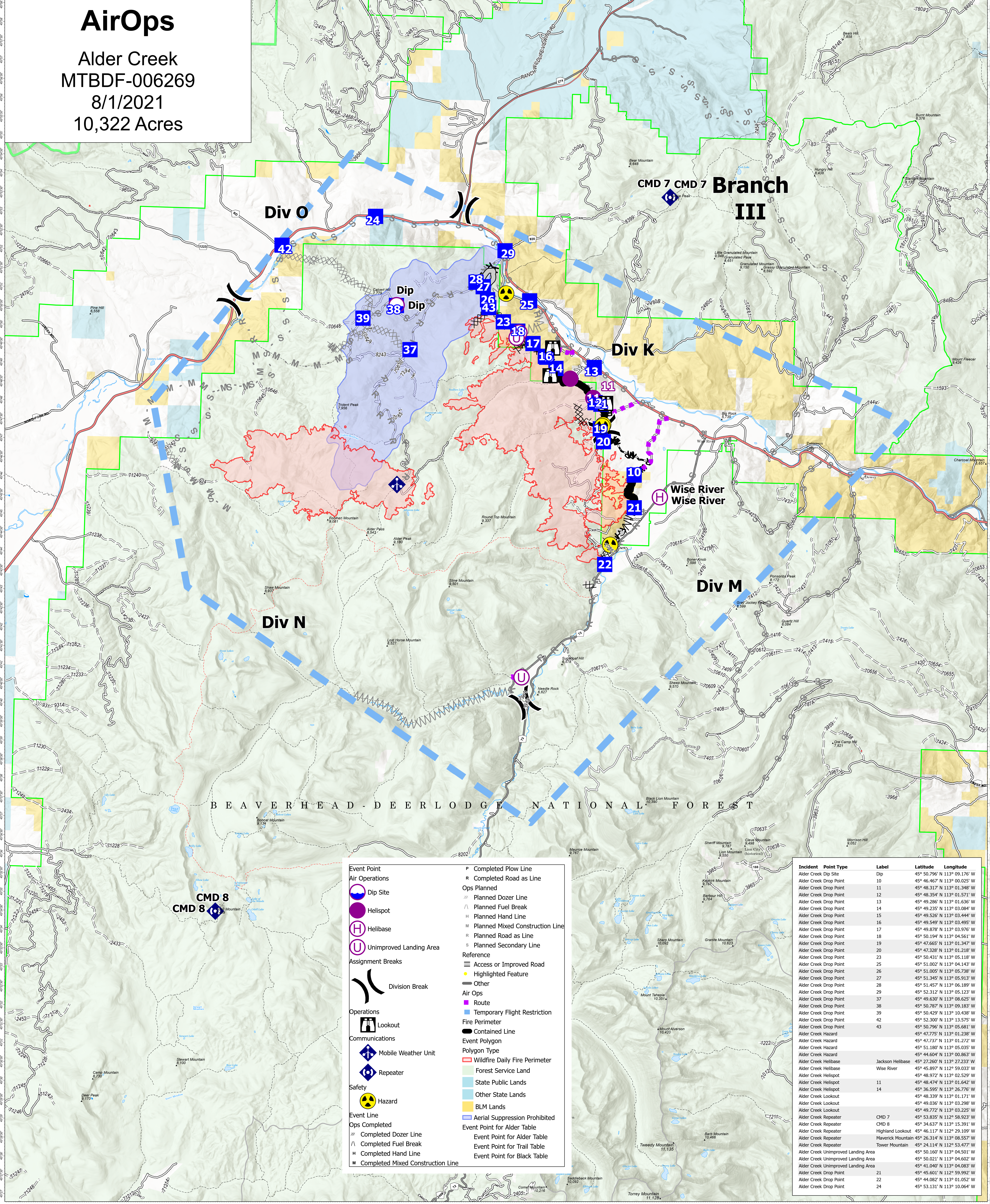


AirOps

Alder Creek
MTBDF-006269
8/1/2021
10,322 Acres



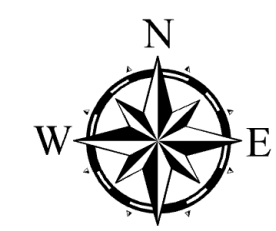
BEAVERHEAD-DEERLOGGE NATIONAL FOREST

Event Point	P Completed Plow Line
Air Operations	R Completed Road as Line
Dip Site	Ops Planned
Helispot	⊗ Planned Dozer Line
Helibase	∧ Planned Fuel Break
Unimproved Landing Area	▭ Planned Hand Line
Assignment Breaks	M Planned Mixed Construction Line
Division Break	P Planned Road as Line
Operations	S Planned Secondary Line
Lookout	Reference
Mobile Weather Unit	▭ Access or Improved Road
Repeater	▭ Highlighted Feature
Hazard	▭ Other
Event Line	Air Ops
Ops Completed	▭ Route
Completed Dozer Line	▭ Temporary Flight Restriction
Completed Fuel Break	▭ Fire Perimeter
Completed Hand Line	▭ Contained Line
Completed Mixed Construction Line	Event Polygon
	Polygon Type
	▭ Wildfire Daily Fire Perimeter
	▭ Forest Service Land
	▭ State Public Lands
	▭ Other State Lands
	▭ BLM Lands
	▭ Aerial Suppression Prohibited
	Event Point for Alder Table
	Event Point for Trail Table
	Event Point for Black Table

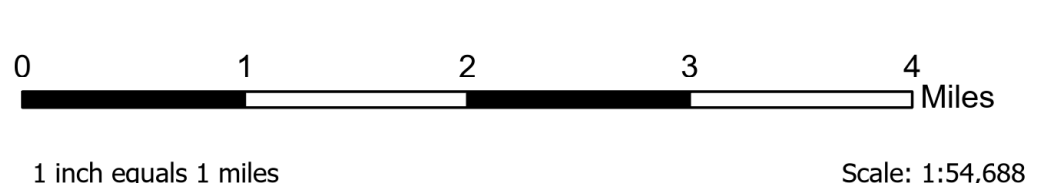
Incident Point Type	Label	Latitude	Longitude
Alder Creek Dip Site	Dip	45° 50.796' N 113° 09.176' W	
Alder Creek Drop Point	10	45° 46.467' N 113° 00.025' W	
Alder Creek Drop Point	11	45° 48.317' N 113° 01.349' W	
Alder Creek Drop Point	12	45° 48.354' N 113° 01.571' W	
Alder Creek Drop Point	13	45° 49.286' N 113° 01.636' W	
Alder Creek Drop Point	14	45° 49.235' N 113° 03.084' W	
Alder Creek Drop Point	15	45° 49.526' N 113° 03.444' W	
Alder Creek Drop Point	16	45° 49.549' N 113° 03.495' W	
Alder Creek Drop Point	17	45° 49.878' N 113° 03.976' W	
Alder Creek Drop Point	18	45° 50.194' N 113° 04.561' W	
Alder Creek Drop Point	19	45° 47.665' N 113° 01.347' W	
Alder Creek Drop Point	20	45° 47.328' N 113° 01.218' W	
Alder Creek Drop Point	23	45° 50.431' N 113° 05.118' W	
Alder Creek Drop Point	25	45° 51.002' N 113° 04.143' W	
Alder Creek Drop Point	26	45° 51.005' N 113° 05.738' W	
Alder Creek Drop Point	27	45° 51.345' N 113° 05.913' W	
Alder Creek Drop Point	28	45° 51.457' N 113° 06.189' W	
Alder Creek Drop Point	29	45° 52.312' N 113° 05.123' W	
Alder Creek Drop Point	37	45° 49.630' N 113° 08.625' W	
Alder Creek Drop Point	38	45° 50.787' N 113° 09.183' W	
Alder Creek Drop Point	39	45° 50.429' N 113° 10.438' W	
Alder Creek Drop Point	42	45° 52.300' N 113° 13.575' W	
Alder Creek Drop Point	43	45° 50.796' N 113° 05.681' W	
Alder Creek Hazard		45° 47.775' N 113° 01.238' W	
Alder Creek Hazard		45° 47.737' N 113° 01.272' W	
Alder Creek Hazard		45° 51.180' N 113° 05.035' W	
Alder Creek Hazard		45° 44.604' N 113° 00.863' W	
Alder Creek Helibase	Jackson Helibase	45° 27.260' N 113° 27.233' W	
Alder Creek Helibase	Wise River	45° 45.897' N 113° 59.033' W	
Alder Creek Helispot		45° 48.972' N 113° 02.529' W	
Alder Creek Helispot	11	45° 48.474' N 113° 01.642' W	
Alder Creek Helispot	14	45° 36.595' N 113° 26.776' W	
Alder Creek Lookout		45° 48.339' N 113° 01.171' W	
Alder Creek Lookout		45° 49.036' N 113° 03.298' W	
Alder Creek Lookout		45° 49.772' N 113° 03.225' W	
Alder Creek Repeater	CMD 7	45° 53.835' N 113° 58.923' W	
Alder Creek Repeater	CMD 8	45° 34.637' N 113° 15.391' W	
Alder Creek Repeater	Highland Lookout	45° 46.117' N 113° 29.109' W	
Alder Creek Repeater	Maverick Mountain	45° 26.314' N 113° 08.557' W	
Alder Creek Repeater	Tower Mountain	45° 24.114' N 113° 53.477' W	
Alder Creek Unimproved Landing Area		45° 50.167' N 113° 04.501' W	
Alder Creek Unimproved Landing Area		45° 50.021' N 113° 04.602' W	
Alder Creek Unimproved Landing Area		45° 41.040' N 113° 04.083' W	
Alder Creek Drop Point	21	45° 45.601' N 113° 59.992' W	
Alder Creek Drop Point	22	45° 44.082' N 113° 10.052' W	
Alder Creek Drop Point	24	45° 53.131' N 113° 10.064' W	

Flight Restriction Information

Alder Creek - 1/7629- 12,500ft ceiling
Trail Creek - 1/7630 - 11,500ft ceiling
Black Mountain - 1/1730 - 10,500ft ceiling



Fire perimeter updated from
Acres from IR on 07/31/21 00:05



SW Team 1
7/31/2021 1918
North American 1983 Datum. LatLong Grid