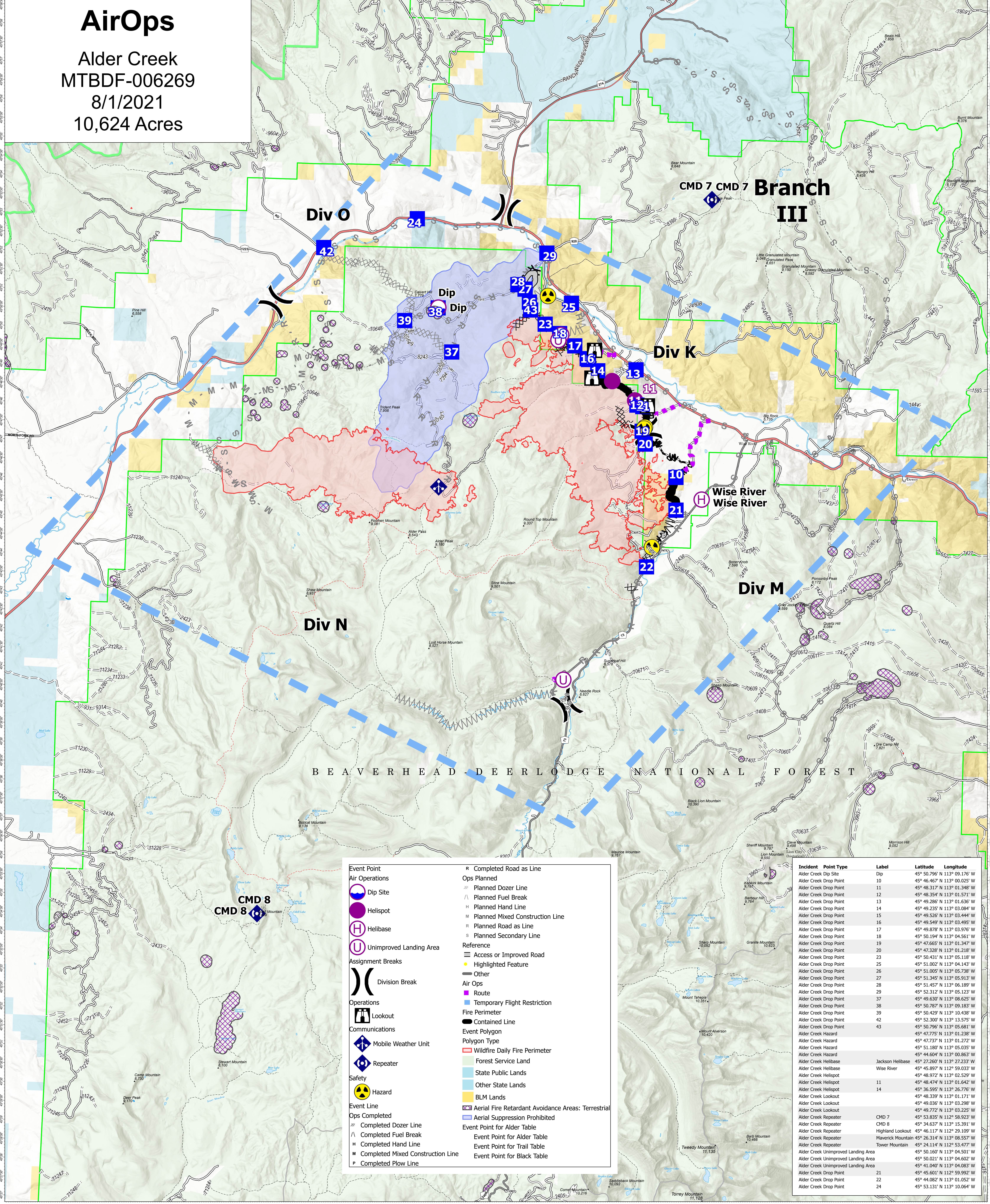


AirOps

Alder Creek
MTBDF-006269
8/1/2021
10,624 Acres

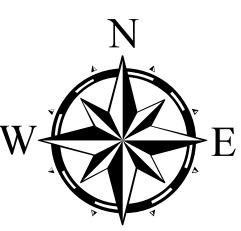


Event Point	R Completed Road as Line
Air Operations	Ops Planned
Dip Site	Planned Dozer Line
Helispot	Planned Fuel Break
Helibase	Planned Hand Line
Unimproved Landing Area	Planned Mixed Construction Line
Assignment Breaks	Planned Road as Line
Division Break	Planned Secondary Line
Operations	Reference
Lookout	Access or Improved Road
Mobile Weather Unit	Highlighted Feature
Repeater	Other
Safety	Air Ops
Hazard	Route
Event Line	Temporary Flight Restriction
Ops Completed	Fire Perimeter
Completed Dozer Line	Contained Line
Completed Fuel Break	Event Polygon
Completed Hand Line	Wildfire Daily Fire Perimeter
Completed Mixed Construction Line	Forest Service Land
Completed Plow Line	State Public Lands
	Other State Lands
	BLM Lands
	Aerial Fire Retardant Avoidance Areas: Terrestrial
	Aerial Suppression Prohibited
	Event Point for Alder Table
	Event Point for Trail Table
	Event Point for Black Table

Incident Point Type	Label	Latitude	Longitude
Alder Creek Dip Site	Dip	45° 50.796' N	113° 09.176' W
Alder Creek Drop Point	10	45° 46.467' N	113° 00.025' W
Alder Creek Drop Point	11	45° 48.317' N	113° 01.249' W
Alder Creek Drop Point	12	45° 48.354' N	113° 01.571' W
Alder Creek Drop Point	13	45° 49.286' N	113° 01.636' W
Alder Creek Drop Point	14	45° 49.235' N	113° 03.084' W
Alder Creek Drop Point	15	45° 49.526' N	113° 03.444' W
Alder Creek Drop Point	16	45° 49.549' N	113° 03.495' W
Alder Creek Drop Point	17	45° 49.878' N	113° 03.976' W
Alder Creek Drop Point	18	45° 50.194' N	113° 04.561' W
Alder Creek Drop Point	19	45° 47.665' N	113° 01.347' W
Alder Creek Drop Point	20	45° 47.328' N	113° 01.218' W
Alder Creek Drop Point	23	45° 50.431' N	113° 05.118' W
Alder Creek Drop Point	25	45° 51.002' N	113° 04.143' W
Alder Creek Drop Point	26	45° 51.005' N	113° 05.738' W
Alder Creek Drop Point	27	45° 51.345' N	113° 05.913' W
Alder Creek Drop Point	28	45° 51.457' N	113° 06.189' W
Alder Creek Drop Point	29	45° 52.312' N	113° 05.123' W
Alder Creek Drop Point	37	45° 49.630' N	113° 08.625' W
Alder Creek Drop Point	38	45° 50.787' N	113° 09.183' W
Alder Creek Drop Point	39	45° 50.429' N	113° 10.438' W
Alder Creek Drop Point	42	45° 52.300' N	113° 13.575' W
Alder Creek Drop Point	43	45° 50.796' N	113° 05.681' W
Alder Creek Hazard	Alder Creek Hazard	45° 47.737' N	113° 01.272' W
Alder Creek Hazard	Alder Creek Hazard	45° 51.180' N	113° 05.035' W
Alder Creek Hazard	Alder Creek Hazard	45° 44.604' N	113° 00.863' W
Alder Creek Helibase	Jackson Helibase	45° 27.260' N	113° 27.233' W
Alder Creek Helibase	Wise River	45° 45.897' N	113° 05.033' W
Alder Creek Helispot	Alder Creek Helispot	45° 48.972' N	113° 02.529' W
Alder Creek Helispot	Alder Creek Helispot	45° 48.474' N	113° 01.642' W
Alder Creek Helispot	Alder Creek Helispot	45° 36.595' N	113° 26.776' W
Alder Creek Lookout	Alder Creek Lookout	45° 48.339' N	113° 01.171' W
Alder Creek Lookout	Alder Creek Lookout	45° 49.036' N	113° 03.298' W
Alder Creek Lookout	Alder Creek Lookout	45° 49.772' N	113° 03.225' W
Alder Creek Repeater	Alder Creek Repeater	45° 53.835' N	112° 58.923' W
Alder Creek Repeater	Alder Creek Repeater	45° 34.637' N	113° 15.391' W
Alder Creek Repeater	Highland Lookout	45° 46.117' N	113° 29.109' W
Alder Creek Repeater	Maverick Lookout	45° 26.314' N	113° 08.557' W
Alder Creek Repeater	Tower Mountain	45° 24.114' N	112° 53.477' W
Alder Creek Unimproved Landing Area	Alder Creek Unimproved Landing Area	45° 50.167' N	113° 04.501' W
Alder Creek Unimproved Landing Area	Alder Creek Unimproved Landing Area	45° 50.021' N	113° 04.602' W
Alder Creek Unimproved Landing Area	Alder Creek Unimproved Landing Area	45° 41.040' N	113° 04.083' W
Alder Creek Drop Point	Alder Creek Drop Point	45° 45.601' N	112° 59.992' W
Alder Creek Drop Point	Alder Creek Drop Point	45° 44.082' N	113° 01.052' W
Alder Creek Drop Point	Alder Creek Drop Point	45° 53.131' N	113° 10.064' W

Flight Restriction Information

Alder Creek - 1/7629- 12,500ft ceiling
Trail Creek - 1/7630 - 11,500ft ceiling
Black Mountain - 1/1730 - 10,500ft ceiling



Fire perimeter updated from
Acres IR / Hand Draw on 08/01/21 07:00

