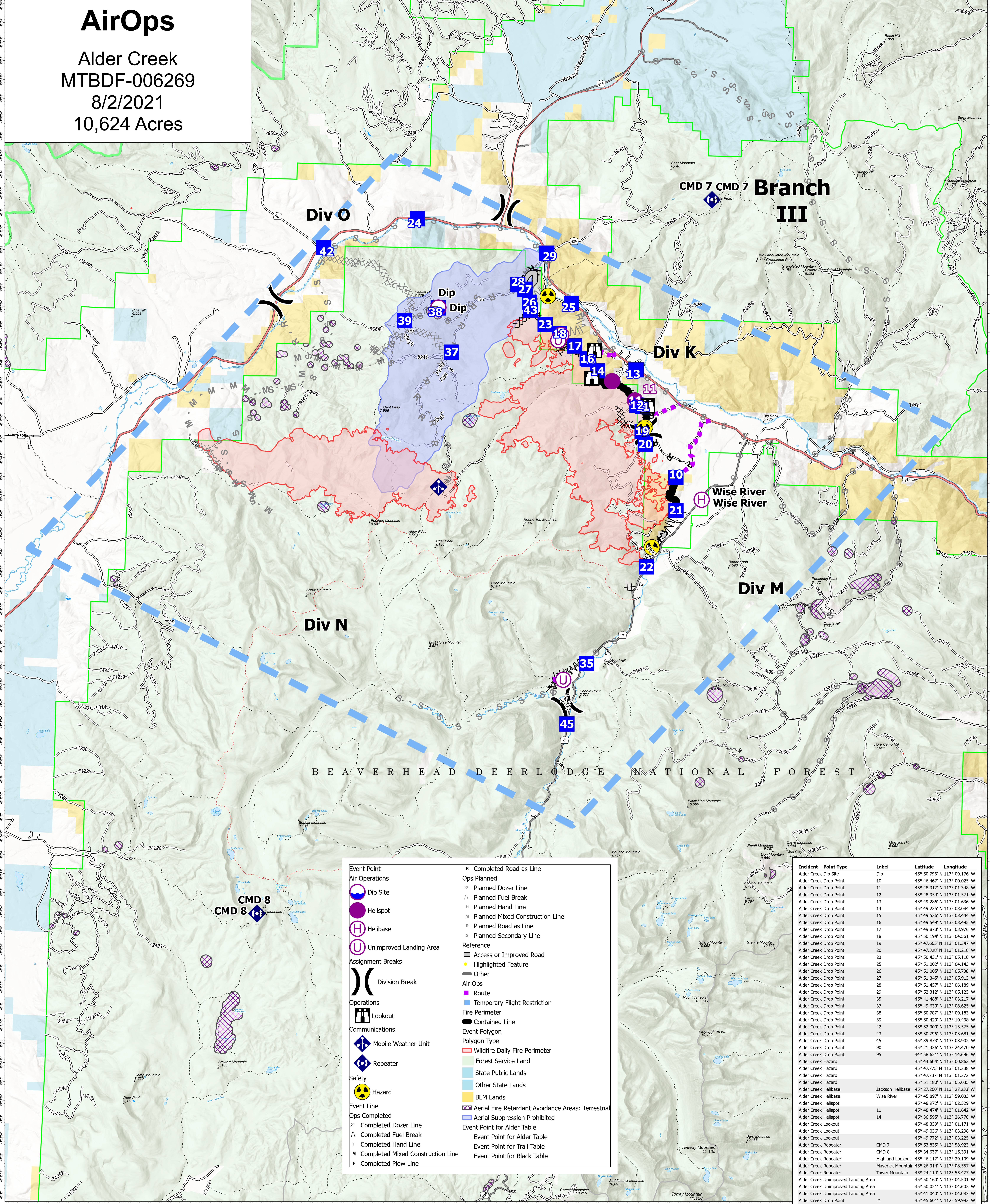


# AirOps

Alder Creek  
MTBDF-006269  
8/2/2021  
10,624 Acres



<p><b>Event Point</b></p> <ul style="list-style-type: none"> <li> Dip Site</li> <li> Helispot</li> <li> Helibase</li> <li> Unimproved Landing Area</li> </ul> <p><b>Assignment Breaks</b></p> <ul style="list-style-type: none"> <li> Division Break</li> </ul> <p><b>Operations</b></p> <ul style="list-style-type: none"> <li> Lookout</li> </ul> <p><b>Communications</b></p> <ul style="list-style-type: none"> <li> Mobile Weather Unit</li> <li> Repeater</li> </ul> <p><b>Safety</b></p> <ul style="list-style-type: none"> <li> Hazard</li> </ul> <p><b>Event Line</b></p> <ul style="list-style-type: none"> <li> Completed Dozer Line</li> <li> Completed Fuel Break</li> <li> Completed Hand Line</li> <li> Completed Mixed Construction Line</li> <li> Completed Plow Line</li> </ul>	<ul style="list-style-type: none"> <li> Completed Road as Line</li> <li> Ops Planned</li> <li> Planned Dozer Line</li> <li> Planned Fuel Break</li> <li> Planned Hand Line</li> <li> Planned Mixed Construction Line</li> <li> Planned Road as Line</li> <li> Planned Secondary Line</li> </ul> <p><b>Reference</b></p> <ul style="list-style-type: none"> <li> Access or Improved Road</li> <li> Highlighted Feature</li> <li> Other</li> </ul> <p><b>Air Ops</b></p> <ul style="list-style-type: none"> <li> Route</li> <li> Temporary Flight Restriction</li> </ul> <p><b>Fire Perimeter</b></p> <ul style="list-style-type: none"> <li> Contained Line</li> </ul> <p><b>Event Polygon</b></p> <p><b>Polygon Type</b></p> <ul style="list-style-type: none"> <li> Wildfire Daily Fire Perimeter</li> <li> Forest Service Land</li> <li> State Public Lands</li> <li> Other State Lands</li> <li> BLM Lands</li> <li> Aerial Fire Retardant Avoidance Areas: Terrestrial</li> <li> Aerial Suppression Prohibited</li> </ul> <p><b>Event Point for Alder Table</b></p> <ul style="list-style-type: none"> <li> Event Point for Alder Table</li> <li> Event Point for Trail Table</li> <li> Event Point for Black Table</li> </ul>
---	--

Incident Point Type	Label	Latitude	Longitude
Alder Creek Dip Site	Dip	45° 50.796' N 113° 09.176' W	
Alder Creek Drop Point	10	45° 46.467' N 113° 00.025' W	
Alder Creek Drop Point	11	45° 48.317' N 113° 01.349' W	
Alder Creek Drop Point	12	45° 48.354' N 113° 01.571' W	
Alder Creek Drop Point	13	45° 49.285' N 113° 01.630' W	
Alder Creek Drop Point	14	45° 49.235' N 113° 03.084' W	
Alder Creek Drop Point	15	45° 49.526' N 113° 03.444' W	
Alder Creek Drop Point	16	45° 49.549' N 113° 03.495' W	
Alder Creek Drop Point	17	45° 49.878' N 113° 03.976' W	
Alder Creek Drop Point	18	45° 50.194' N 113° 04.561' W	
Alder Creek Drop Point	19	45° 47.665' N 113° 01.347' W	
Alder Creek Drop Point	20	45° 47.328' N 113° 01.218' W	
Alder Creek Drop Point	23	45° 50.431' N 113° 05.118' W	
Alder Creek Drop Point	25	45° 51.002' N 113° 04.143' W	
Alder Creek Drop Point	26	45° 51.005' N 113° 05.738' W	
Alder Creek Drop Point	27	45° 51.345' N 113° 05.913' W	
Alder Creek Drop Point	28	45° 51.457' N 113° 06.189' W	
Alder Creek Drop Point	29	45° 52.312' N 113° 05.123' W	
Alder Creek Drop Point	35	45° 41.488' N 113° 03.217' W	
Alder Creek Drop Point	37	45° 49.630' N 113° 08.625' W	
Alder Creek Drop Point	38	45° 50.787' N 113° 09.183' W	
Alder Creek Drop Point	39	45° 50.429' N 113° 10.438' W	
Alder Creek Drop Point	42	45° 52.300' N 113° 13.575' W	
Alder Creek Drop Point	43	45° 50.796' N 113° 05.681' W	
Alder Creek Drop Point	45	45° 39.873' N 113° 03.902' W	
Alder Creek Drop Point	90	45° 21.336' N 113° 24.470' W	
Alder Creek Drop Point	95	44° 58.621' N 113° 14.696' W	
Alder Creek Hazard		45° 44.604' N 113° 00.863' W	
Alder Creek Hazard		45° 47.775' N 113° 01.238' W	
Alder Creek Hazard		45° 47.737' N 113° 01.272' W	
Alder Creek Hazard		45° 51.180' N 113° 05.035' W	
Alder Creek Helibase	Jackson Helibase	45° 22.260' N 113° 27.233' W	
Alder Creek Helibase	Wise River	45° 45.897' N 113° 59.033' W	
Alder Creek Helispot		45° 48.972' N 113° 02.529' W	
Alder Creek Helispot	11	45° 48.474' N 113° 01.642' W	
Alder Creek Helispot	14	45° 36.595' N 113° 26.776' W	
Alder Creek Lookout		45° 48.339' N 113° 01.171' W	
Alder Creek Lookout		45° 49.036' N 113° 03.298' W	
Alder Creek Lookout		45° 49.772' N 113° 03.225' W	
Alder Creek Repeater	CMD 7	45° 53.835' N 112° 58.923' W	
Alder Creek Repeater	CMD 8	45° 34.637' N 113° 15.391' W	
Alder Creek Repeater	Highland Lookout	45° 46.117' N 113° 29.109' W	
Alder Creek Repeater	Maverick Mountain	45° 26.314' N 113° 08.557' W	
Alder Creek Repeater	Tower Mountain	45° 24.114' N 112° 53.477' W	
Alder Creek Unimproved Landing Area		45° 50.160' N 113° 04.501' W	
Alder Creek Unimproved Landing Area		45° 50.021' N 113° 04.602' W	
Alder Creek Unimproved Landing Area		45° 41.040' N 113° 04.083' W	
Alder Creek Drop Point	21	45° 45.601' N 113° 59.992' W	
Alder Creek Drop Point	22	45° 44.082' N 113° 01.052' W	
Alder Creek Drop Point	24	45° 53.131' N 113° 10.064' W	

**Flight Restriction Information**

Alder Creek - 1/7629- 12,500ft ceiling  
Trail Creek - 1/7630 - 11,500ft ceiling  
Black Mountain - 1/1730 - 10,500ft ceiling

Fire perimeter updated from  
Acres IR / Hand Draw on 08/01/21 07:00

Scale: 1:54,688  
1 inch equals 1 mile

**SOUTHWEST AREA  
INCIDENT MANAGEMENT TEAM**

SW Team 1  
8/1/2021 1930  
North American 1983 Datum. Lat/Long Grid