

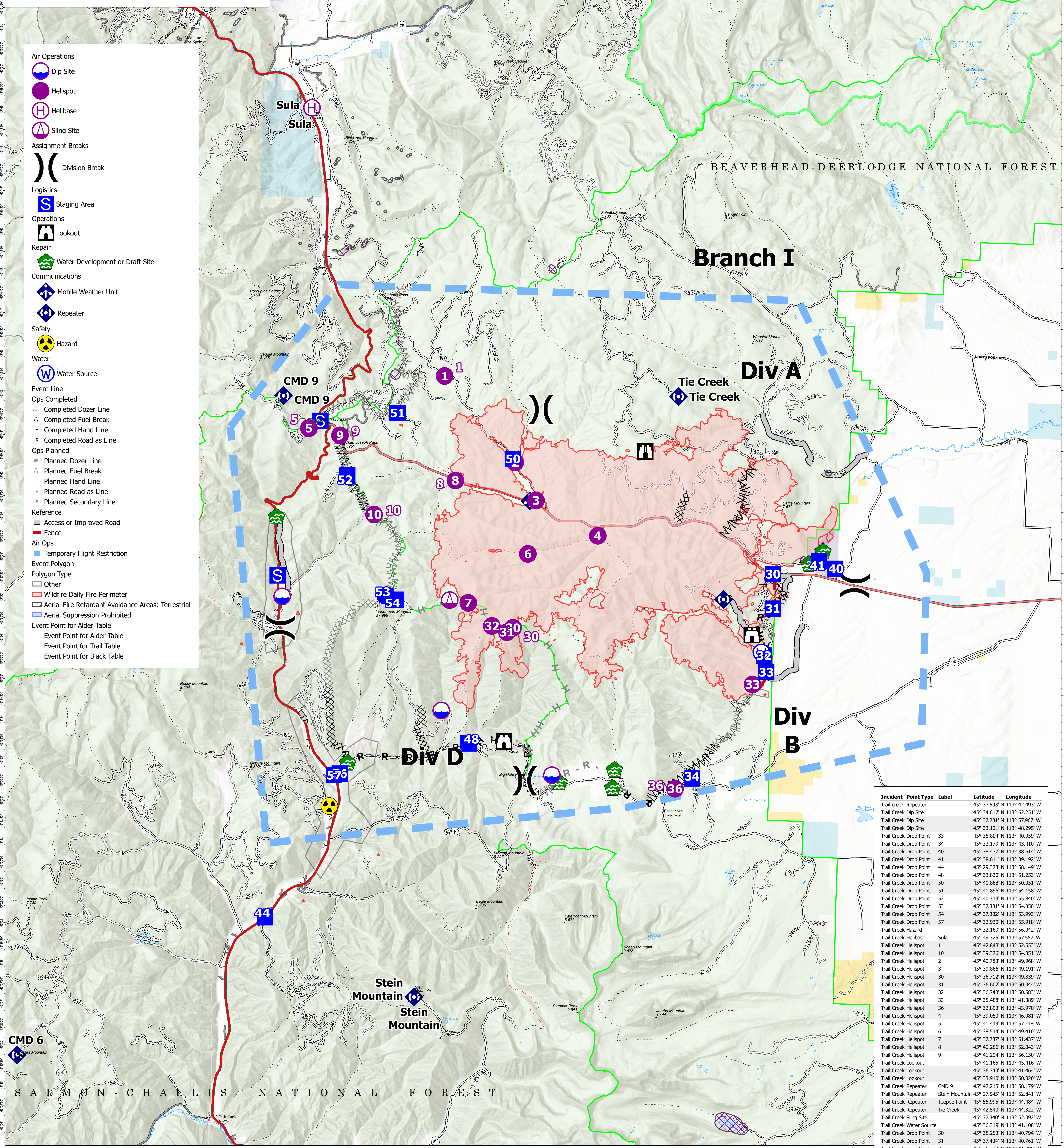
AirOps

Trail Creek
MTBDF-00629
8/2/2021
35,111 Acres

TERROOT NATIONAL FOREST

BEAVERHEAD-DEERLodge NATIONAL FOREST

- Air Operations**
- Dip Site
- Helispot
- Helibase
- Sling Site
- Assignment Breaks**
- Division Break
- Logistics**
- Staging Area
- Operations**
- Lookout
- Repair**
- Water Development or Draft Site
- Communications**
- Mobile Weather Unit
- Repeater
- Safety**
- Hazard
- Water**
- Water Source
- Event Line**
- Ops Completed**
- Completed Dozer Line
- Completed Fuel Break
- Completed Hand Line
- Completed Road as Line
- Ops Planned**
- Planned Dozer Line
- Planned Fuel Break
- Planned Hand Line
- Planned Road as Line
- Planned Secondary Line
- Reference**
- Access or Improved Road
- Fence
- Air Ops**
- Temporary Flight Restriction
- Event Polygon**
- Polygon Type**
- Wildfire Daily Fire Perimeter
- Aerial Fire Retardant Avoidance Areas: Terrestrial
- Aerial Suppression Prohibited
- Event Point for Alder Table**
- Event Point for Trail Table**
- Event Point for Black Table**



Incident	Point Type	Label	Latitude	Longitude
Trail Creek	Repeater		45° 37.593' N 113° 42.493' W	
Trail Creek	Dip Site		45° 34.617' N 113° 52.251' W	
Trail Creek	Dip Site		45° 37.281' N 113° 57.967' W	
Trail Creek	Dip Site		45° 33.121' N 113° 48.295' W	
Trail Creek	Drop Point	33	45° 35.804' N 113° 40.959' W	
Trail Creek	Drop Point	34	45° 33.179' N 113° 43.410' W	
Trail Creek	Drop Point	40	45° 38.437' N 113° 38.614' W	
Trail Creek	Drop Point	41	45° 38.611' N 113° 39.192' W	
Trail Creek	Drop Point	44	45° 29.373' N 113° 58.149' W	
Trail Creek	Drop Point	48	45° 33.830' N 113° 51.253' W	
Trail Creek	Drop Point	50	45° 40.868' N 113° 50.051' W	
Trail Creek	Drop Point	51	45° 41.896' N 113° 54.158' W	
Trail Creek	Drop Point	52	45° 40.313' N 113° 55.840' W	
Trail Creek	Drop Point	53	45° 37.381' N 113° 54.350' W	
Trail Creek	Drop Point	54	45° 37.302' N 113° 53.993' W	
Trail Creek	Drop Point	57	45° 32.930' N 113° 55.918' W	
Trail Creek	Hazard		45° 32.169' N 113° 56.042' W	
Trail Creek	Helibase	Sula	45° 49.325' N 113° 57.557' W	
Trail Creek	Helispot	1	45° 42.848' N 113° 52.553' W	
Trail Creek	Helispot	10	45° 39.376' N 113° 54.851' W	
Trail Creek	Helispot	2	45° 40.783' N 113° 49.968' W	
Trail Creek	Helispot	3	45° 39.866' N 113° 49.191' W	
Trail Creek	Helispot	30	45° 36.712' N 113° 49.839' W	
Trail Creek	Helispot	31	45° 36.602' N 113° 50.044' W	
Trail Creek	Helispot	32	45° 36.740' N 113° 50.583' W	
Trail Creek	Helispot	33	45° 35.488' N 113° 41.389' W	
Trail Creek	Helispot	36	45° 32.893' N 113° 43.970' W	
Trail Creek	Helispot	4	45° 39.050' N 113° 46.981' W	
Trail Creek	Helispot	5	45° 41.443' N 113° 57.248' W	
Trail Creek	Helispot	6	45° 38.544' N 113° 49.410' W	
Trail Creek	Helispot	7	45° 37.287' N 113° 51.437' W	
Trail Creek	Helispot	8	45° 40.286' N 113° 52.043' W	
Trail Creek	Helispot	9	45° 41.294' N 113° 56.150' W	
Trail Creek	Lookout		45° 41.165' N 113° 45.416' W	
Trail Creek	Lookout		45° 36.740' N 113° 41.464' W	
Trail Creek	Lookout		45° 33.910' N 113° 50.020' W	
Trail Creek	Repeater	CMD 9	45° 42.215' N 113° 58.179' W	
Trail Creek	Repeater	Stein Mountain	45° 27.545' N 113° 52.841' W	
Trail Creek	Repeater	Teepee Creek	45° 55.995' N 113° 44.484' W	
Trail Creek	Repeater	Tie Creek	45° 42.540' N 113° 44.322' W	
Trail Creek	Sling Site		45° 37.340' N 113° 52.092' W	
Trail Creek	Water Source		45° 36.319' N 113° 41.108' W	
Trail Creek	Drop Point	30	45° 38.253' N 113° 40.794' W	
Trail Creek	Drop Point	31	45° 37.404' N 113° 40.761' W	
Trail Creek	Drop Point	32	45° 36.323' N 113° 41.098' W	
Trail Creek	Drop Point	56	45° 32.975' N 113° 55.723' W	

Flight Restriction Information

Alder Creek - 1/7629 - 12,500ft ceiling
Trail Creek - 1/7630 - 11,500ft ceiling
Black Mountain - 1/1730 - 10,500ft ceiling



SW Team 1
8/1/2021 1934
North American 1983 Datum. LatLong Grid

Fire perimeter updated from Acres from IR on 07/31/21 00:22

Scale: 1:54,688