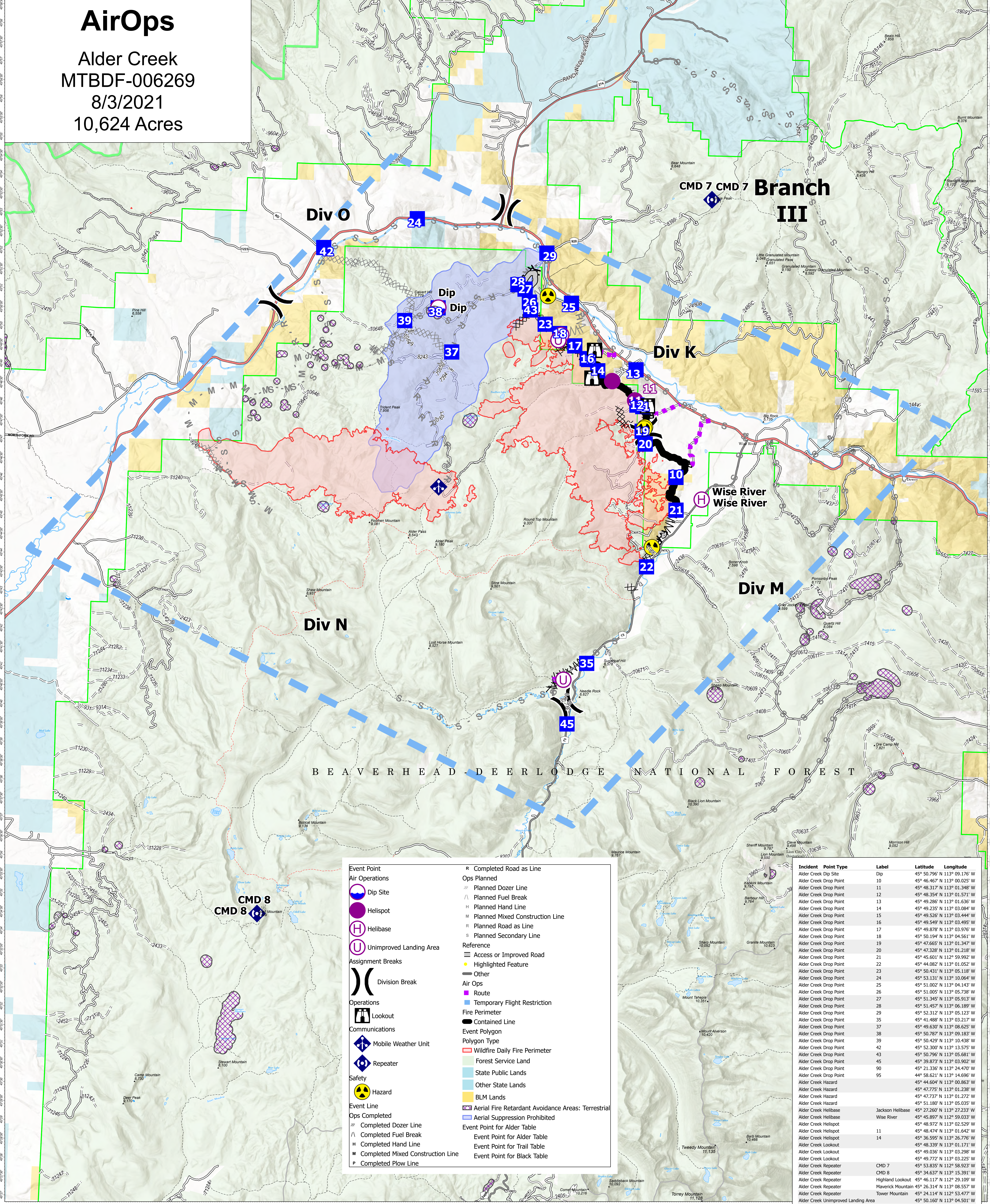


AirOps

Alder Creek
MTBDF-006269
8/3/2021
10,624 Acres



<ul style="list-style-type: none"> Event Point Air Operations <ul style="list-style-type: none"> Dip Site Helispot Helibase Unimproved Landing Area Assignment Breaks <ul style="list-style-type: none"> Division Break Operations <ul style="list-style-type: none"> Lookout Communications <ul style="list-style-type: none"> Mobile Weather Unit Repeater Safety <ul style="list-style-type: none"> Hazard Event Line <ul style="list-style-type: none"> Ops Completed <ul style="list-style-type: none"> Completed Dozer Line Completed Fuel Break Completed Hand Line Completed Mixed Construction Line Completed Plow Line 	<ul style="list-style-type: none"> R Completed Road as Line Ops Planned <ul style="list-style-type: none"> Planned Dozer Line Planned Fuel Break Planned Hand Line Planned Mixed Construction Line Planned Road as Line Planned Secondary Line Reference <ul style="list-style-type: none"> Access or Improved Road Highlighted Feature Other Air Ops <ul style="list-style-type: none"> Route Temporary Flight Restriction Fire Perimeter <ul style="list-style-type: none"> Contained Line Event Polygon <ul style="list-style-type: none"> Polygon Type <ul style="list-style-type: none"> Wildfire Daily Fire Perimeter Forest Service Land State Public Lands Other State Lands BLM Lands Aerial Fire Retardant Avoidance Areas: Terrestrial Aerial Suppression Prohibited Event Point for Alder Table Event Point for Trail Table Event Point for Black Table
---	--

Incident Point Type	Label	Latitude	Longitude
Alder Creek Dip Site	Dip	45° 50.796' N	113° 09.176' W
Alder Creek Drop Point	10	45° 46.467' N	113° 00.025' W
Alder Creek Drop Point	11	45° 48.317' N	113° 01.349' W
Alder Creek Drop Point	12	45° 48.354' N	113° 01.571' W
Alder Creek Drop Point	13	45° 49.286' N	113° 01.636' W
Alder Creek Drop Point	14	45° 49.235' N	113° 03.084' W
Alder Creek Drop Point	15	45° 49.526' N	113° 03.444' W
Alder Creek Drop Point	16	45° 49.549' N	113° 03.495' W
Alder Creek Drop Point	17	45° 49.878' N	113° 03.976' W
Alder Creek Drop Point	18	45° 50.194' N	113° 04.561' W
Alder Creek Drop Point	19	45° 47.665' N	113° 01.347' W
Alder Creek Drop Point	20	45° 47.328' N	113° 01.218' W
Alder Creek Drop Point	21	45° 45.601' N	113° 59.992' W
Alder Creek Drop Point	22	45° 44.082' N	113° 01.052' W
Alder Creek Drop Point	23	45° 50.431' N	113° 05.118' W
Alder Creek Drop Point	24	45° 53.131' N	113° 10.064' W
Alder Creek Drop Point	25	45° 51.002' N	113° 04.143' W
Alder Creek Drop Point	26	45° 51.005' N	113° 05.738' W
Alder Creek Drop Point	27	45° 51.345' N	113° 05.913' W
Alder Creek Drop Point	28	45° 51.457' N	113° 06.189' W
Alder Creek Drop Point	29	45° 52.312' N	113° 05.123' W
Alder Creek Drop Point	35	45° 41.488' N	113° 03.217' W
Alder Creek Drop Point	37	45° 49.630' N	113° 08.625' W
Alder Creek Drop Point	38	45° 50.787' N	113° 09.183' W
Alder Creek Drop Point	39	45° 50.429' N	113° 10.438' W
Alder Creek Drop Point	42	45° 52.300' N	113° 13.575' W
Alder Creek Drop Point	43	45° 50.796' N	113° 05.681' W
Alder Creek Drop Point	45	45° 39.873' N	113° 03.902' W
Alder Creek Drop Point	90	45° 21.336' N	113° 24.470' W
Alder Creek Drop Point	95	44° 58.621' N	113° 14.696' W
Alder Creek Hazard		45° 44.604' N	113° 00.863' W
Alder Creek Hazard		45° 47.775' N	113° 01.238' W
Alder Creek Hazard		45° 47.737' N	113° 01.272' W
Alder Creek Hazard		45° 51.180' N	113° 05.035' W
Alder Creek Helibase	Jackson Helibase	45° 27.260' N	113° 27.233' W
Alder Creek Helibase	Wise River	45° 45.897' N	112° 59.033' W
Alder Creek Helispot		45° 48.972' N	113° 02.529' W
Alder Creek Helispot	11	45° 48.474' N	113° 01.642' W
Alder Creek Helispot	14	45° 36.995' N	113° 26.776' W
Alder Creek Lookout		45° 48.339' N	113° 01.171' W
Alder Creek Lookout		45° 49.036' N	113° 03.298' W
Alder Creek Lookout		45° 49.772' N	113° 03.225' W
Alder Creek Repeater	CMD 7	45° 53.835' N	112° 58.923' W
Alder Creek Repeater	CMD 8	45° 34.637' N	113° 15.391' W
Alder Creek Repeater	Highland Lookout	45° 46.117' N	112° 29.109' W
Alder Creek Repeater	Maverick Mountain	45° 26.314' N	113° 08.557' W
Alder Creek Repeater	Tower Mountain	45° 24.114' N	112° 53.477' W
Alder Creek Unimproved Landing Area		45° 50.160' N	113° 04.501' W
Alder Creek Unimproved Landing Area		45° 50.021' N	113° 04.602' W
Alder Creek Unimproved Landing Area		45° 41.040' N	113° 04.083' W

Flight Restriction Information
Alder Creek - 1/7629- 12,500ft ceiling
Trail Creek - 1/7630 - 11,500ft ceiling
Black Mountain - 1/1730 - 10,500ft ceiling

Fire perimeter updated from Acres IR / Hand Draw on 08/01/21 07:00

Scale: 1:54,688
1 inch equals 1 mile

SOUTHWEST AREA
INCIDENT MANAGEMENT TEAM

SW Team 1
8/2/2021 1940
North American 1983 Datum. LatLong Grid