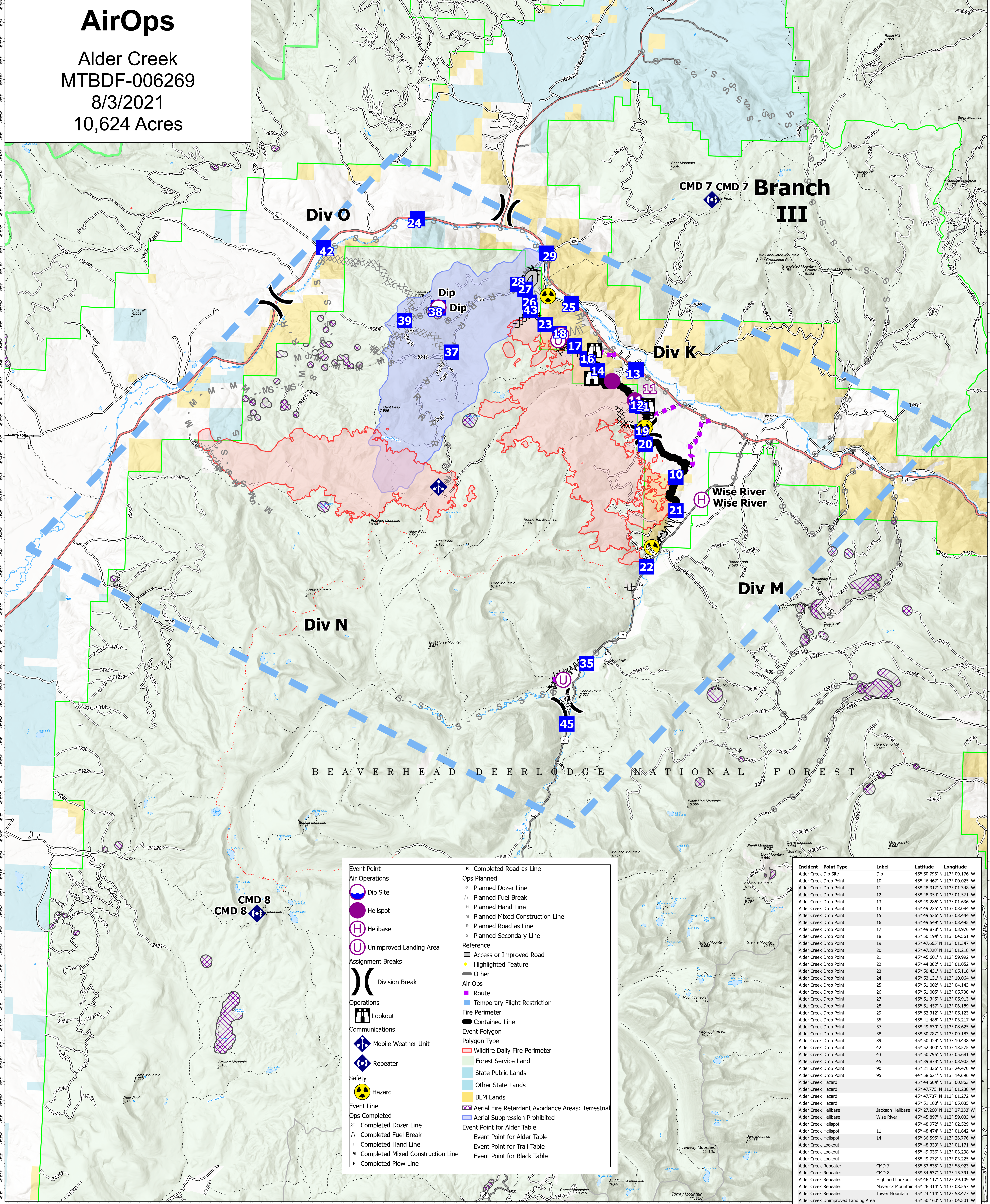


AirOps

Alder Creek
MTBDF-006269
8/3/2021
10,624 Acres



<ul style="list-style-type: none"> Event Point Air Operations Dip Site Helispot Helibase Unimproved Landing Area Assignment Breaks Division Break Operations Lookout Communications Mobile Weather Unit Repeater Safety Hazard Event Line Ops Completed Completed Dozer Line Completed Fuel Break Completed Hand Line Completed Mixed Construction Line Completed Plow Line 	<ul style="list-style-type: none"> R Completed Road as Line Ops Planned Planned Dozer Line Planned Fuel Break Planned Hand Line Planned Mixed Construction Line Planned Road as Line Planned Secondary Line Reference Access or Improved Road Highlighted Feature Other Air Ops Route Temporary Flight Restriction Fire Perimeter Contained Line Event Polygon Polygon Type Wildfire Daily Fire Perimeter Forest Service Land State Public Lands Other State Lands BLM Lands Aerial Fire Retardant Avoidance Areas: Terrestrial Aerial Suppression Prohibited Event Point for Alder Table Event Point for Trail Table Event Point for Black Table
---	--

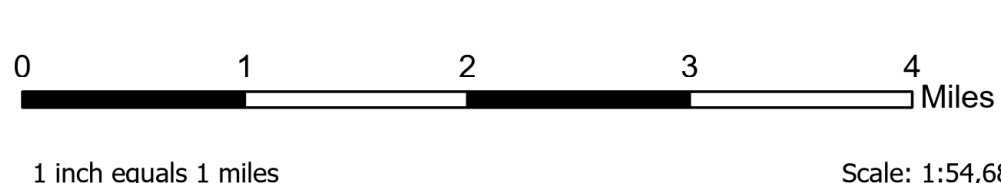
Incident Point Type	Label	Latitude	Longitude
Alder Creek Dip Site	Dip	45° 50.796' N 113° 09.176' W	
Alder Creek Drop Point	10	45° 46.467' N 113° 00.025' W	
Alder Creek Drop Point	11	45° 48.317' N 113° 01.349' W	
Alder Creek Drop Point	12	45° 48.354' N 113° 01.571' W	
Alder Creek Drop Point	13	45° 49.286' N 113° 01.636' W	
Alder Creek Drop Point	14	45° 49.235' N 113° 03.084' W	
Alder Creek Drop Point	15	45° 49.526' N 113° 03.444' W	
Alder Creek Drop Point	16	45° 49.549' N 113° 03.495' W	
Alder Creek Drop Point	17	45° 49.878' N 113° 03.976' W	
Alder Creek Drop Point	18	45° 50.194' N 113° 04.561' W	
Alder Creek Drop Point	19	45° 47.665' N 113° 01.347' W	
Alder Creek Drop Point	20	45° 47.328' N 113° 01.218' W	
Alder Creek Drop Point	21	45° 45.601' N 112° 59.992' W	
Alder Creek Drop Point	22	45° 44.082' N 113° 01.052' W	
Alder Creek Drop Point	23	45° 50.431' N 113° 05.118' W	
Alder Creek Drop Point	24	45° 53.131' N 113° 10.064' W	
Alder Creek Drop Point	25	45° 51.002' N 113° 04.143' W	
Alder Creek Drop Point	26	45° 51.005' N 113° 05.738' W	
Alder Creek Drop Point	27	45° 51.345' N 113° 05.913' W	
Alder Creek Drop Point	28	45° 51.457' N 113° 06.189' W	
Alder Creek Drop Point	29	45° 52.312' N 113° 05.123' W	
Alder Creek Drop Point	35	45° 41.488' N 113° 03.217' W	
Alder Creek Drop Point	37	45° 49.630' N 113° 08.625' W	
Alder Creek Drop Point	38	45° 50.787' N 113° 09.183' W	
Alder Creek Drop Point	39	45° 50.429' N 113° 10.438' W	
Alder Creek Drop Point	42	45° 52.300' N 113° 13.575' W	
Alder Creek Drop Point	43	45° 50.796' N 113° 05.681' W	
Alder Creek Drop Point	45	45° 39.873' N 113° 03.902' W	
Alder Creek Drop Point	90	45° 21.336' N 113° 24.470' W	
Alder Creek Drop Point	95	44° 58.621' N 113° 14.696' W	
Alder Creek Hazard		45° 44.604' N 113° 00.863' W	
Alder Creek Hazard		45° 47.775' N 113° 01.238' W	
Alder Creek Hazard		45° 47.737' N 113° 01.272' W	
Alder Creek Hazard		45° 51.180' N 113° 05.035' W	
Alder Creek Helibase	Jackson Helibase	45° 27.260' N 113° 27.233' W	
Alder Creek Helibase	Wise River	45° 45.897' N 112° 59.033' W	
Alder Creek Helispot		45° 48.972' N 113° 02.529' W	
Alder Creek Helispot	11	45° 48.474' N 113° 01.642' W	
Alder Creek Helispot	14	45° 36.595' N 113° 26.776' W	
Alder Creek Lookout		45° 48.339' N 113° 01.171' W	
Alder Creek Lookout		45° 49.036' N 113° 03.298' W	
Alder Creek Lookout		45° 49.772' N 113° 03.225' W	
Alder Creek Repeater	CMD 7	45° 53.835' N 112° 58.923' W	
Alder Creek Repeater	CMD 8	45° 34.637' N 113° 15.391' W	
Alder Creek Repeater	Highland Lookout	45° 46.117' N 112° 29.109' W	
Alder Creek Repeater	Maverick Mountain	45° 26.314' N 113° 08.557' W	
Alder Creek Repeater	Tower Mountain	45° 24.114' N 112° 53.477' W	
Alder Creek Unimproved Landing Area		45° 50.160' N 113° 04.501' W	
Alder Creek Unimproved Landing Area		45° 50.021' N 113° 04.602' W	
Alder Creek Unimproved Landing Area		45° 41.040' N 113° 04.083' W	

Flight Restriction Information

Alder Creek - 1/7629- 12,500ft ceiling
Trail Creek - 1/7630 - 11,500ft ceiling
Black Mountain - 1/1730 - 10,500ft ceiling



Fire perimeter updated from
Acres IR / Hand Draw on 08/01/21 07:00



SW Team 1
8/2/2021 1938
North American 1983 Datum. LatLong Grid