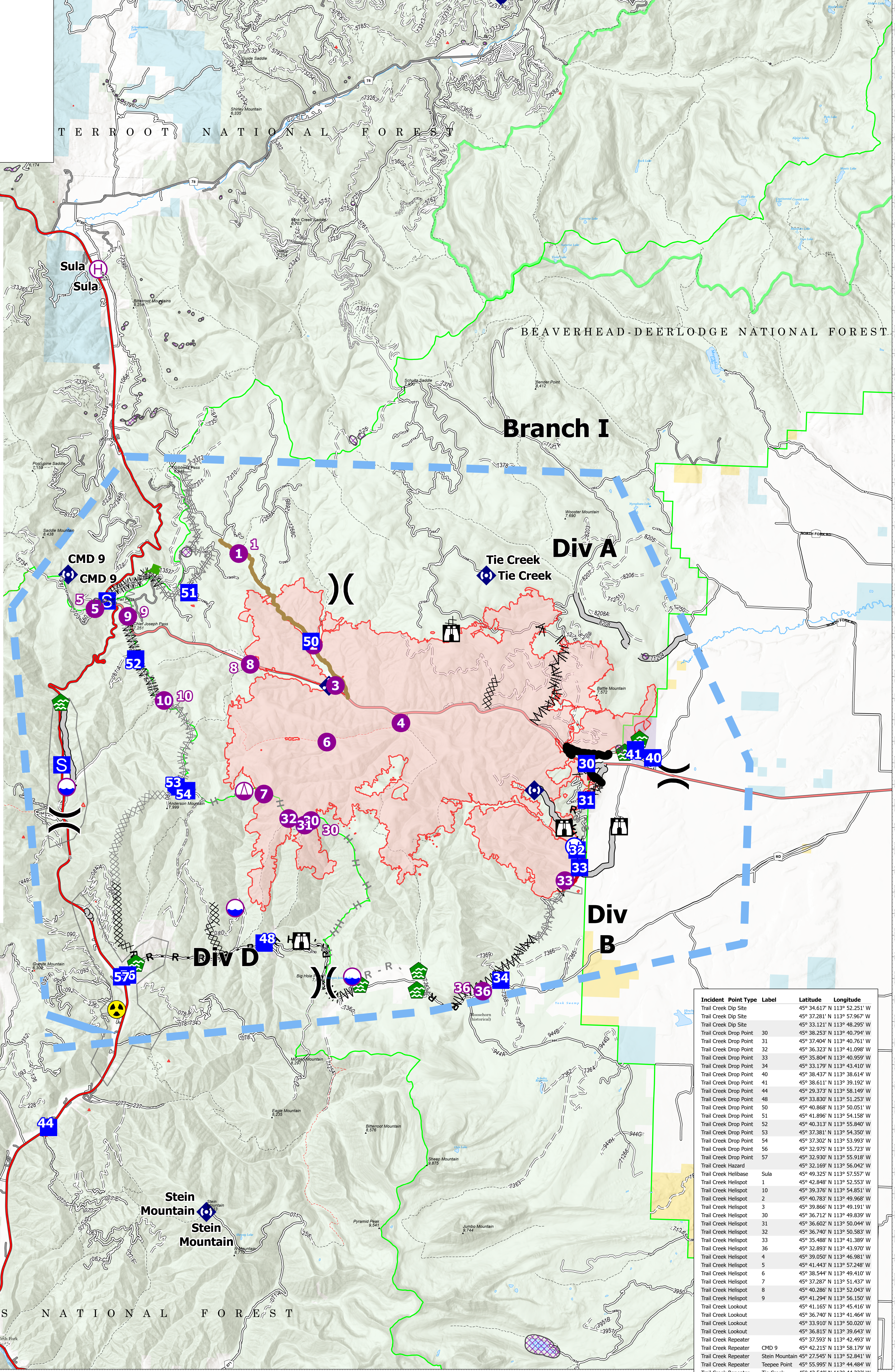


# AirOps

Trail Creek  
MTBDF-00629  
8/3/2021  
35.602 Acres

- Air Operations**
- Dip Site
- Helispot
- Helibase
- Sling Site
- Assignment Breaks**
- Division Break
- Logistics**
- Staging Area
- Operations**
- Lookout
- Repair**
- Water Development or Draft Site
- Communications**
- Mobile Weather Unit
- Repeater
- Safety**
- Hazard
- Water**
- Water Source
- Event Line**
- Ops Completed**
- Completed Dozer Line
- Completed Fuel Break
- Completed Hand Line
- Completed Road as Line
- Ops Planned**
- Planned Dozer Line
- Planned Fuel Break
- Planned Hand Line
- Planned Road as Line
- Planned Secondary Line
- Reference**
- Access or Improved Road
- Fence
- Repair**
- Repair Line
- Safety**
- Escape Route
- Air Ops**
- Temporary Flight Restriction
- Fire Perimeter**
- Contained Line
- Event Polygon**
- Polygon Type**
- Other
- Wildfire Daily Fire Perimeter
- Aerial Fire Retardant Avoidance Areas: Terrestrial
- Aerial Suppression Prohibited
- Event Point for Alder Table**
- Event Point for Trail Table**

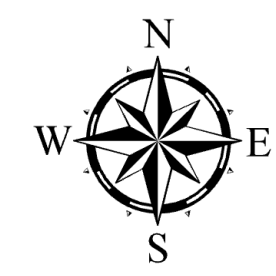


Incident Point Type	Label	Latitude	Longitude
Trail Creek Dip Site	30	45° 34.617' N 113° 52.251' W	
Trail Creek Dip Site	31	45° 37.281' N 113° 57.967' W	
Trail Creek Dip Site	32	45° 33.121' N 113° 48.295' W	
Trail Creek Drop Point	30	45° 38.253' N 113° 40.794' W	
Trail Creek Drop Point	31	45° 37.404' N 113° 40.761' W	
Trail Creek Drop Point	32	45° 36.323' N 113° 41.098' W	
Trail Creek Drop Point	33	45° 35.804' N 113° 40.959' W	
Trail Creek Drop Point	34	45° 33.179' N 113° 43.410' W	
Trail Creek Drop Point	40	45° 38.437' N 113° 38.614' W	
Trail Creek Drop Point	41	45° 38.611' N 113° 39.192' W	
Trail Creek Drop Point	44	45° 29.373' N 113° 58.149' W	
Trail Creek Drop Point	48	45° 33.830' N 113° 51.253' W	
Trail Creek Drop Point	50	45° 40.868' N 113° 50.051' W	
Trail Creek Drop Point	51	45° 41.896' N 113° 54.158' W	
Trail Creek Drop Point	52	45° 40.313' N 113° 55.840' W	
Trail Creek Drop Point	53	45° 37.381' N 113° 54.350' W	
Trail Creek Drop Point	54	45° 37.302' N 113° 53.993' W	
Trail Creek Drop Point	56	45° 32.975' N 113° 55.723' W	
Trail Creek Drop Point	57	45° 32.830' N 113° 55.918' W	
Trail Creek Hazard	55	45° 32.169' N 113° 56.042' W	
Trail Creek Helibase	Sula	45° 49.325' N 113° 57.557' W	
Trail Creek Helispot	1	45° 42.848' N 113° 52.553' W	
Trail Creek Helispot	10	45° 39.376' N 113° 54.851' W	
Trail Creek Helispot	2	45° 40.783' N 113° 49.968' W	
Trail Creek Helispot	3	45° 39.866' N 113° 49.191' W	
Trail Creek Helispot	30	45° 36.712' N 113° 49.839' W	
Trail Creek Helispot	31	45° 36.602' N 113° 50.044' W	
Trail Creek Helispot	32	45° 36.740' N 113° 50.583' W	
Trail Creek Helispot	33	45° 35.488' N 113° 41.389' W	
Trail Creek Helispot	36	45° 32.893' N 113° 43.970' W	
Trail Creek Helispot	4	45° 39.050' N 113° 46.981' W	
Trail Creek Helispot	5	45° 41.443' N 113° 57.248' W	
Trail Creek Helispot	6	45° 38.544' N 113° 49.410' W	
Trail Creek Helispot	7	45° 37.287' N 113° 51.437' W	
Trail Creek Helispot	8	45° 40.286' N 113° 52.043' W	
Trail Creek Helispot	9	45° 41.294' N 113° 56.150' W	
Trail Creek Lookout	9	45° 41.165' N 113° 45.416' W	
Trail Creek Lookout	9	45° 36.740' N 113° 41.464' W	
Trail Creek Lookout	9	45° 33.910' N 113° 50.020' W	
Trail Creek Lookout	9	45° 36.815' N 113° 39.643' W	
Trail Creek Repeater	9	45° 37.593' N 113° 42.493' W	
Trail Creek Repeater	CMD 9	45° 42.215' N 113° 58.179' W	
Trail Creek Repeater	Stein Mountain	45° 27.545' N 113° 52.841' W	
Trail Creek Repeater	Teepee Point	45° 55.995' N 113° 44.484' W	
Trail Creek Repeater	Tie Creek	45° 42.540' N 113° 44.322' W	
Trail Creek Sling Site	9	45° 37.340' N 113° 52.092' W	
Trail Creek Water Source	9	45° 36.319' N 113° 41.108' W	

Flight Restriction Information  
 Alder Creek - 1/7629- 12,500ft ceiling  
 Trail Creek - 1/7630 - 11,500ft ceiling  
 Black Mountain - 1/1730 - 10,500ft ceiling



SW Team 1  
8/3/2021 0839  
North American 1983 Datum. LatLong Grid



Fire perimeter updated from  
Acres from IR on 08/02/21 22:31

0 1 2 3 4 Miles  
Scale: 1:54,688