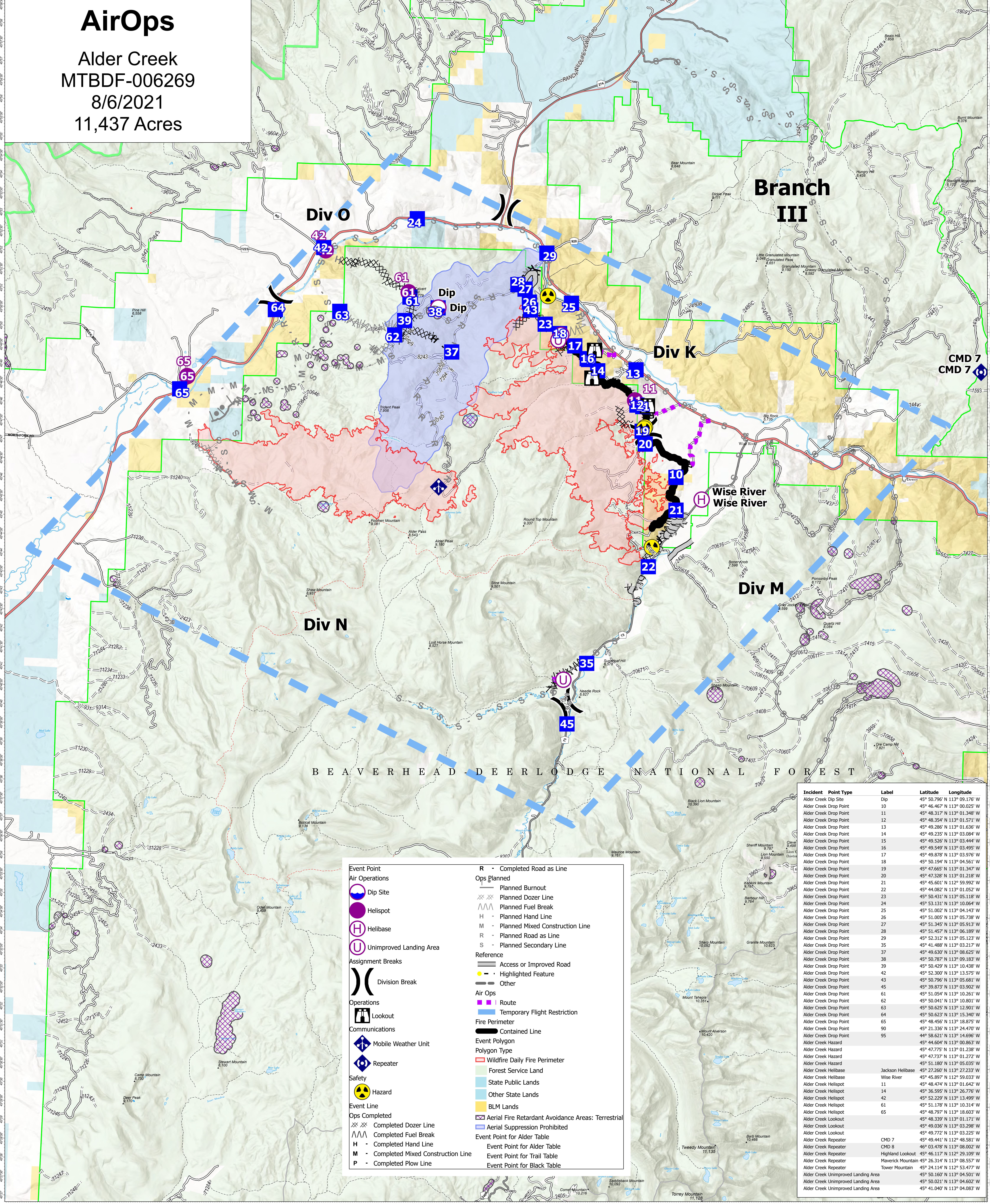


# AirOps

Alder Creek  
MTBDF-006269  
8/6/2021  
11,437 Acres



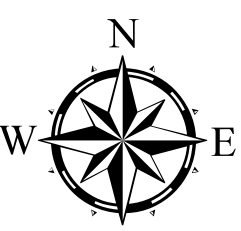
Incident	Point Type	Label	Latitude	Longitude
Alder Creek Dip Site	Dip		45° 50.796' N	113° 09.176' W
Alder Creek Drop Point		10	45° 46.467' N	113° 00.025' W
Alder Creek Drop Point		11	45° 48.317' N	113° 01.348' W
Alder Creek Drop Point		12	45° 48.354' N	113° 01.571' W
Alder Creek Drop Point		13	45° 49.285' N	113° 01.636' W
Alder Creek Drop Point		14	45° 49.235' N	113° 03.084' W
Alder Creek Drop Point		15	45° 49.526' N	113° 03.444' W
Alder Creek Drop Point		16	45° 49.549' N	113° 03.495' W
Alder Creek Drop Point		17	45° 49.878' N	113° 03.976' W
Alder Creek Drop Point		18	45° 50.194' N	113° 04.561' W
Alder Creek Drop Point		19	45° 47.665' N	113° 01.347' W
Alder Creek Drop Point		20	45° 47.328' N	113° 01.218' W
Alder Creek Drop Point		21	45° 45.601' N	113° 59.992' W
Alder Creek Drop Point		22	45° 44.082' N	113° 01.052' W
Alder Creek Drop Point		23	45° 50.431' N	113° 05.118' W
Alder Creek Drop Point		24	45° 53.131' N	113° 10.064' W
Alder Creek Drop Point		25	45° 51.002' N	113° 04.143' W
Alder Creek Drop Point		26	45° 50.041' N	113° 01.801' W
Alder Creek Drop Point		27	45° 51.345' N	113° 05.913' W
Alder Creek Drop Point		28	45° 51.457' N	113° 06.189' W
Alder Creek Drop Point		29	45° 52.312' N	113° 05.123' W
Alder Creek Drop Point		35	45° 41.488' N	113° 03.217' W
Alder Creek Drop Point		37	45° 49.630' N	113° 08.625' W
Alder Creek Drop Point		38	45° 50.787' N	113° 09.183' W
Alder Creek Drop Point		39	45° 50.429' N	113° 10.438' W
Alder Creek Drop Point		42	45° 52.300' N	113° 13.575' W
Alder Creek Drop Point		43	45° 50.796' N	113° 05.681' W
Alder Creek Drop Point		45	45° 39.873' N	113° 03.902' W
Alder Creek Drop Point		61	45° 51.054' N	113° 10.261' W
Alder Creek Drop Point		62	45° 50.041' N	113° 01.801' W
Alder Creek Drop Point		63	45° 50.625' N	113° 12.901' W
Alder Creek Drop Point		64	45° 50.623' N	113° 15.340' W
Alder Creek Drop Point		65	45° 48.456' N	113° 18.875' W
Alder Creek Drop Point		90	45° 21.336' N	113° 24.470' W
Alder Creek Drop Point		95	44° 58.621' N	113° 14.696' W
Alder Creek Hazard			45° 44.604' N	113° 08.863' W
Alder Creek Hazard			45° 47.775' N	113° 01.238' W
Alder Creek Hazard			45° 47.737' N	113° 01.272' W
Alder Creek Hazard			45° 51.180' N	113° 05.035' W
Alder Creek Helibase		Jackson Helibase	45° 27.260' N	113° 27.233' W
Alder Creek Helibase		Wise River	45° 45.897' N	112° 59.033' W
Alder Creek Helispot		11	45° 48.474' N	113° 01.642' W
Alder Creek Helispot		14	45° 35.595' N	113° 26.761' W
Alder Creek Helispot		42	45° 52.229' N	113° 13.499' W
Alder Creek Helispot		61	45° 51.178' N	113° 10.314' W
Alder Creek Helispot		65	45° 48.797' N	113° 18.603' W
Alder Creek Lookout			45° 48.339' N	113° 01.171' W
Alder Creek Lookout			45° 49.036' N	113° 03.298' W
Alder Creek Lookout			45° 49.772' N	113° 03.225' W
Alder Creek Repeater		CMD 7	45° 49.441' N	112° 48.581' W
Alder Creek Repeater		CMD 8	46° 03.478' N	113° 08.002' W
Alder Creek Repeater		Highland Lookout	45° 46.117' N	112° 29.109' W
Alder Creek Repeater		Maverick Lookout	45° 26.314' N	113° 08.557' W
Alder Creek Repeater		Tower Mountain	45° 24.114' N	112° 53.477' W
Alder Creek Unimproved Landing Area			45° 50.160' N	113° 04.501' W
Alder Creek Unimproved Landing Area			45° 50.021' N	113° 04.602' W
Alder Creek Unimproved Landing Area			45° 41.040' N	113° 04.083' W

**Event Point**

- Air Operations
  - Dip Site
  - Helispot
  - Helibase
  - Unimproved Landing Area
- Assignment Breaks
  - Division Break
- Operations
  - Lookout
- Communications
  - Mobile Weather Unit
  - Repeater
- Safety
  - Hazard
- Event Line
  - Ops Completed
    - Completed Dozer Line
    - Completed Fuel Break
    - Completed Hand Line
    - Completed Mixed Construction Line
    - Completed Plow Line
  - Ops Planned
    - Planned Burnout
    - Planned Dozer Line
    - Planned Fuel Break
    - Planned Hand Line
    - Planned Mixed Construction Line
    - Planned Road as Line
    - Planned Secondary Line
- Reference
  - Access or Improved Road
  - Highlighted Feature
  - Other
- Air Ops
  - Route
  - Temporary Flight Restriction
- Fire Perimeter
  - Contained Line
- Event Polygon
  - Wildfire Daily Fire Perimeter
- Polygon Type
  - Forest Service Land
  - State Public Lands
  - Other State Lands
  - BLM Lands
  - Aerial Fire Retardant Avoidance Areas: Terrestrial
  - Aerial Suppression Prohibited
- Event Point for Alder Table
  - Event Point for Alder Table
  - Event Point for Trail Table
  - Event Point for Black Table

### Flight Restriction Information

Alder Creek - 1/7629 - 12,500ft ceiling  
Trail Creek - 1/7630 - 11,500ft ceiling  
Black Mountain - 1/1730 - 10,500ft ceiling



Fire perimeter updated from  
Acres from IR on 08/04/21 21:30

