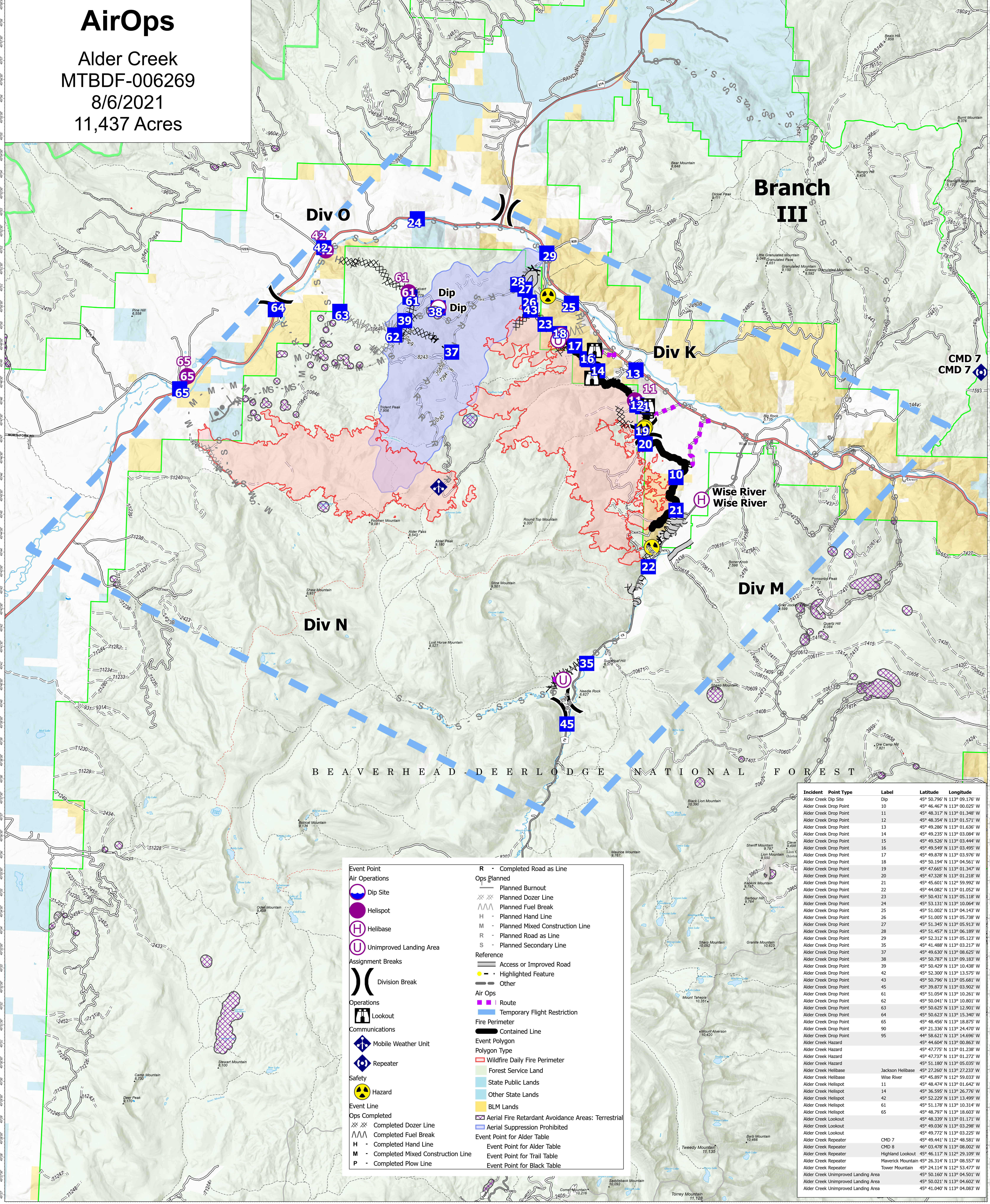


AirOps

Alder Creek
MTBDF-006269
8/6/2021
11,437 Acres



Event Point	R - Completed Road as Line
Air Operations	Ops Planned
Dip Site	Planned Burnout
Helispot	Planned Dozer Line
Helibase	Planned Fuel Break
Unimproved Landing Area	Planned Hand Line
	Planned Mixed Construction Line
	Planned Road as Line
	Planned Secondary Line
Assignment Breaks	Reference
Division Break	Access or Improved Road
	Highlighted Feature
	Other
Operations	Air Ops
Lookout	Route
	Temporary Flight Restriction
Communications	Fire Perimeter
Mobile Weather Unit	Contained Line
Repeater	Event Polygon
	Polygon Type
Safety	Wildfire Daily Fire Perimeter
Hazard	Forest Service Land
	State Public Lands
	Other State Lands
	BLM Lands
Event Line	Aerial Fire Retardant Avoidance Areas: Terrestrial
Ops Completed	Aerial Suppression Prohibited
Completed Dozer Line	Event Point for Alder Table
Completed Fuel Break	Event Point for Alder Table
Completed Hand Line	Event Point for Trail Table
Completed Mixed Construction Line	Event Point for Black Table
Completed Plow Line	

Incident	Point Type	Label	Latitude	Longitude
Alder Creek Dip Site	Dip		45° 50.796' N	113° 09.176' W
Alder Creek Drop Point	10		45° 46.467' N	113° 00.025' W
Alder Creek Drop Point	11		45° 48.317' N	113° 01.348' W
Alder Creek Drop Point	12		45° 48.354' N	113° 01.571' W
Alder Creek Drop Point	13		45° 49.286' N	113° 01.636' W
Alder Creek Drop Point	14		45° 49.235' N	113° 03.084' W
Alder Creek Drop Point	15		45° 49.526' N	113° 03.444' W
Alder Creek Drop Point	16		45° 49.549' N	113° 03.495' W
Alder Creek Drop Point	17		45° 49.878' N	113° 03.976' W
Alder Creek Drop Point	18		45° 50.194' N	113° 04.561' W
Alder Creek Drop Point	19		45° 47.665' N	113° 01.347' W
Alder Creek Drop Point	20		45° 47.328' N	113° 01.218' W
Alder Creek Drop Point	21		45° 45.601' N	112° 59.992' W
Alder Creek Drop Point	22		45° 44.082' N	113° 01.052' W
Alder Creek Drop Point	23		45° 50.431' N	113° 05.118' W
Alder Creek Drop Point	24		45° 53.131' N	113° 10.064' W
Alder Creek Drop Point	25		45° 51.002' N	113° 04.143' W
Alder Creek Drop Point	26		45° 50.941' N	113° 10.801' W
Alder Creek Drop Point	27		45° 51.345' N	113° 05.913' W
Alder Creek Drop Point	28		45° 51.457' N	113° 01.189' W
Alder Creek Drop Point	29		45° 52.312' N	113° 05.123' W
Alder Creek Drop Point	35		45° 41.488' N	113° 03.217' W
Alder Creek Drop Point	37		45° 49.630' N	113° 08.625' W
Alder Creek Drop Point	38		45° 50.787' N	113° 09.183' W
Alder Creek Drop Point	39		45° 50.429' N	113° 10.438' W
Alder Creek Drop Point	42		45° 52.300' N	113° 13.575' W
Alder Creek Drop Point	43		45° 50.796' N	113° 05.681' W
Alder Creek Drop Point	45		45° 39.873' N	113° 03.902' W
Alder Creek Drop Point	61		45° 51.054' N	113° 10.261' W
Alder Creek Drop Point	62		45° 50.941' N	113° 10.801' W
Alder Creek Drop Point	63		45° 50.625' N	113° 12.901' W
Alder Creek Drop Point	64		45° 50.623' N	113° 15.340' W
Alder Creek Drop Point	65		45° 48.456' N	113° 18.875' W
Alder Creek Drop Point	90		45° 21.336' N	113° 24.470' W
Alder Creek Drop Point	95		44° 58.621' N	113° 14.696' W
Alder Creek Hazard			45° 44.604' N	113° 08.863' W
Alder Creek Hazard			45° 47.775' N	113° 01.238' W
Alder Creek Hazard			45° 47.737' N	113° 01.272' W
Alder Creek Hazard			45° 51.180' N	113° 05.035' W
Alder Creek Helibase	Jackson Helibase		45° 27.260' N	113° 27.233' W
Alder Creek Helispot	Wise River		45° 45.897' N	112° 59.033' W
Alder Creek Helispot			45° 48.474' N	113° 01.642' W
Alder Creek Helispot			45° 36.595' N	113° 26.761' W
Alder Creek Helispot			45° 52.229' N	113° 13.499' W
Alder Creek Helispot			45° 51.178' N	113° 10.314' W
Alder Creek Helispot			45° 48.797' N	113° 18.603' W
Alder Creek Lookout			45° 48.339' N	113° 01.171' W
Alder Creek Lookout			45° 49.036' N	113° 03.298' W
Alder Creek Lookout			45° 49.772' N	113° 03.225' W
Alder Creek Repeater	CMD 7		45° 49.441' N	112° 48.581' W
Alder Creek Repeater	CMD 8		46° 03.478' N	113° 08.002' W
Alder Creek Repeater	Highland Lookout		45° 46.117' N	112° 29.109' W
Alder Creek Repeater	Maverick Mountain		45° 26.314' N	113° 08.557' W
Alder Creek Repeater	Tower Mountain		45° 24.114' N	112° 53.477' W
Alder Creek Unimproved Landing Area			45° 50.160' N	113° 04.501' W
Alder Creek Unimproved Landing Area			45° 50.021' N	113° 04.602' W
Alder Creek Unimproved Landing Area			45° 41.040' N	113° 04.083' W

Flight Restriction Information

Alder Creek - 1/7629 - 12,500ft ceiling
Trail Creek - 1/7630 - 11,500ft ceiling
Black Mountain - 1/1730 - 10,500ft ceiling



Fire perimeter updated from
Acres from IR on 08/04/21 21:30

