

# AirOps

Trail Creek  
MTBDF-00629  
8/6/2021  
35.881 Acres

TERROOT NATIONAL FOREST

BEAVERHEAD-DEERLodge NATIONAL FOREST

**Air Operations**

- Dip Site
- Helispot
- Sling Site

**Assignment Breaks**

- Division Break

**Logistics**

- Staging Area

**Operations**

- Lookout

**Repair**

- Water Development or Draft Site

**Communications**

- Mobile Weather Unit
- Repeater

**Safety**

- Hazard

**Water**

- Water Source

**Event Line**

- Ops Completed
- Completed Dozer Line
- Completed Fuel Break
- Completed Hand Line
- Completed Road as Line
- Ops Planned
- Planned Dozer Line
- Planned Fuel Break
- Planned Hand Line
- Planned Road as Line
- Planned Secondary Line

**Reference**

- Access or Improved Road
- Fence

**Safety**

- Escape Route

**Air Ops**

- Temporary Flight Restriction

**Fire Perimeter**

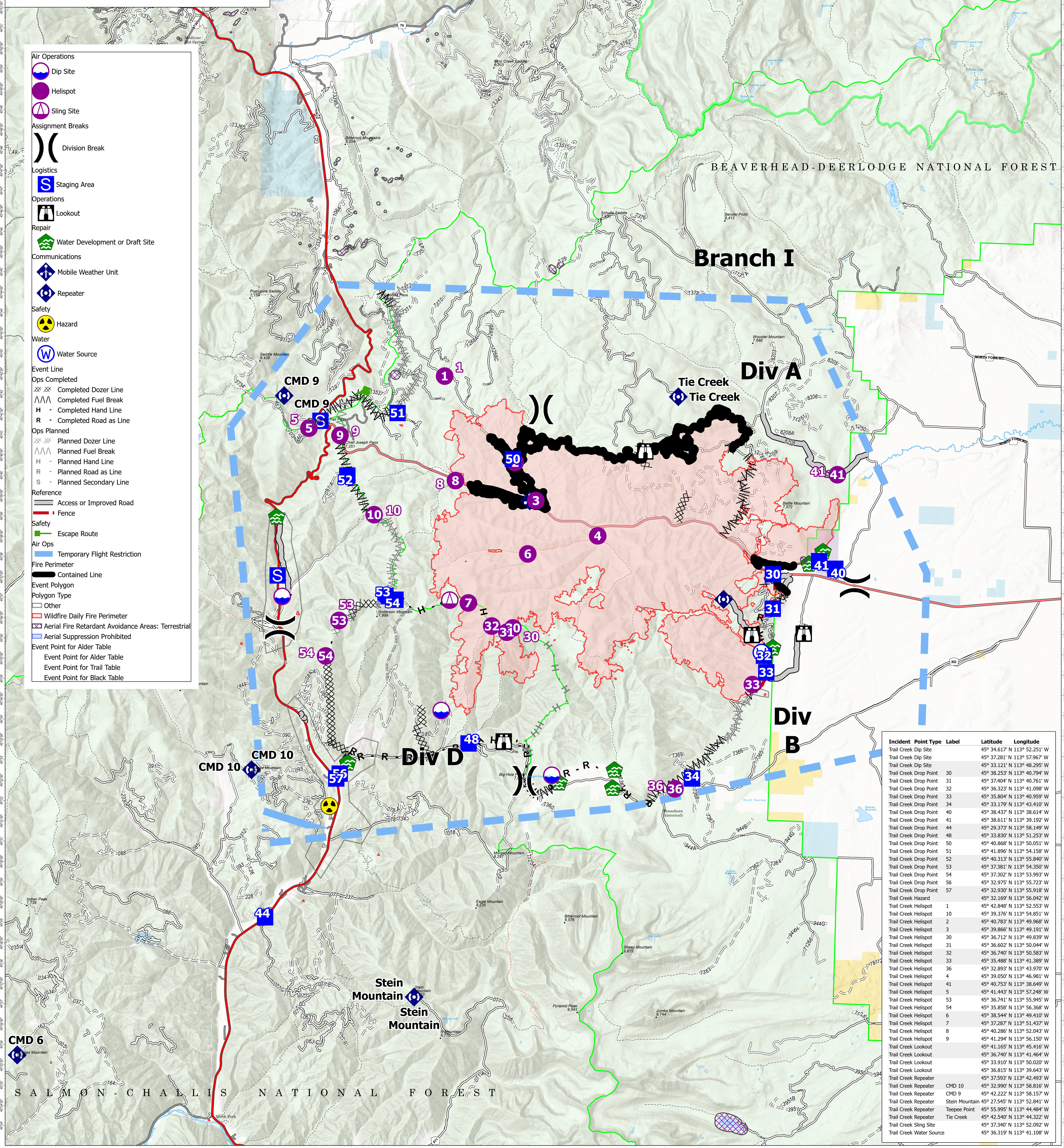
- Contained Line

**Event Polygon**

- Polygon Type
- Other
- Wildfire Daily Fire Perimeter
- Aerial Fire Retardant Avoidance Areas: Terrestrial
- Aerial Suppression Prohibited

**Event Point for Alder Table**

- Event Point for Alder Table
- Event Point for Trail Table
- Event Point for Black Table



Incident Point Type Label	Latitude	Longitude
Trail Creek Dip Site	45° 34.617' N 113° 52.251' W	
Trail Creek Dip Site	45° 37.281' N 113° 57.967' W	
Trail Creek Dip Site	45° 33.121' N 113° 48.295' W	
Trail Creek Drop Point 30	45° 38.253' N 113° 40.794' W	
Trail Creek Drop Point 31	45° 37.404' N 113° 40.761' W	
Trail Creek Drop Point 32	45° 36.323' N 113° 41.098' W	
Trail Creek Drop Point 33	45° 35.804' N 113° 40.959' W	
Trail Creek Drop Point 34	45° 33.179' N 113° 43.410' W	
Trail Creek Drop Point 40	45° 38.437' N 113° 38.614' W	
Trail Creek Drop Point 41	45° 38.611' N 113° 39.192' W	
Trail Creek Drop Point 44	45° 29.373' N 113° 58.149' W	
Trail Creek Drop Point 48	45° 33.830' N 113° 51.253' W	
Trail Creek Drop Point 50	45° 40.868' N 113° 50.051' W	
Trail Creek Drop Point 51	45° 41.896' N 113° 54.158' W	
Trail Creek Drop Point 52	45° 40.313' N 113° 55.840' W	
Trail Creek Drop Point 53	45° 37.381' N 113° 54.350' W	
Trail Creek Drop Point 54	45° 37.302' N 113° 53.993' W	
Trail Creek Drop Point 56	45° 32.975' N 113° 55.723' W	
Trail Creek Drop Point 57	45° 32.930' N 113° 55.918' W	
Trail Creek Hazard	45° 32.169' N 113° 56.042' W	
Trail Creek Helispot 1	45° 42.848' N 113° 52.553' W	
Trail Creek Helispot 10	45° 39.376' N 113° 54.851' W	
Trail Creek Helispot 2	45° 40.783' N 113° 49.968' W	
Trail Creek Helispot 3	45° 39.866' N 113° 49.191' W	
Trail Creek Helispot 30	45° 36.712' N 113° 49.839' W	
Trail Creek Helispot 31	45° 36.602' N 113° 50.044' W	
Trail Creek Helispot 32	45° 36.740' N 113° 50.583' W	
Trail Creek Helispot 33	45° 35.488' N 113° 41.389' W	
Trail Creek Helispot 36	45° 32.893' N 113° 43.970' W	
Trail Creek Helispot 4	45° 39.050' N 113° 46.981' W	
Trail Creek Helispot 41	45° 40.753' N 113° 38.649' W	
Trail Creek Helispot 5	45° 41.443' N 113° 57.248' W	
Trail Creek Helispot 53	45° 36.741' N 113° 55.945' W	
Trail Creek Helispot 54	45° 35.858' N 113° 56.368' W	
Trail Creek Helispot 6	45° 38.544' N 113° 49.410' W	
Trail Creek Helispot 7	45° 37.287' N 113° 51.437' W	
Trail Creek Helispot 8	45° 40.286' N 113° 52.043' W	
Trail Creek Helispot 9	45° 41.294' N 113° 56.150' W	
Trail Creek Lookout	45° 41.165' N 113° 45.416' W	
Trail Creek Lookout	45° 36.740' N 113° 41.464' W	
Trail Creek Lookout	45° 33.910' N 113° 50.020' W	
Trail Creek Lookout	45° 36.815' N 113° 39.643' W	
Trail Creek Repeater	45° 37.593' N 113° 42.493' W	
Trail Creek Repeater	CMD 10 45° 32.990' N 113° 58.816' W	
Trail Creek Repeater	CMD 9 45° 42.222' N 113° 58.157' W	
Trail Creek Repeater	Stein Mountain 45° 27.545' N 113° 52.841' W	
Trail Creek Repeater	Teepee Point 45° 55.995' N 113° 44.484' W	
Trail Creek Repeater	Tie Creek 45° 42.540' N 113° 44.322' W	
Trail Creek Sling Site	45° 37.340' N 113° 52.092' W	
Trail Creek Water Source	45° 36.319' N 113° 41.108' W	

Fire perimeter updated from Acres from IR on 08/04/21 22:00

Flight Restriction Information  
Alder Creek - 1/7629 - 12,500ft ceiling  
Trail Creek - 1/7630 - 11,500ft ceiling  
Black Mountain - 1/1730 - 10,500ft ceiling



SW Team 1  
8/5/2021 19:51  
North American 1983 Datum. LatLong Grid