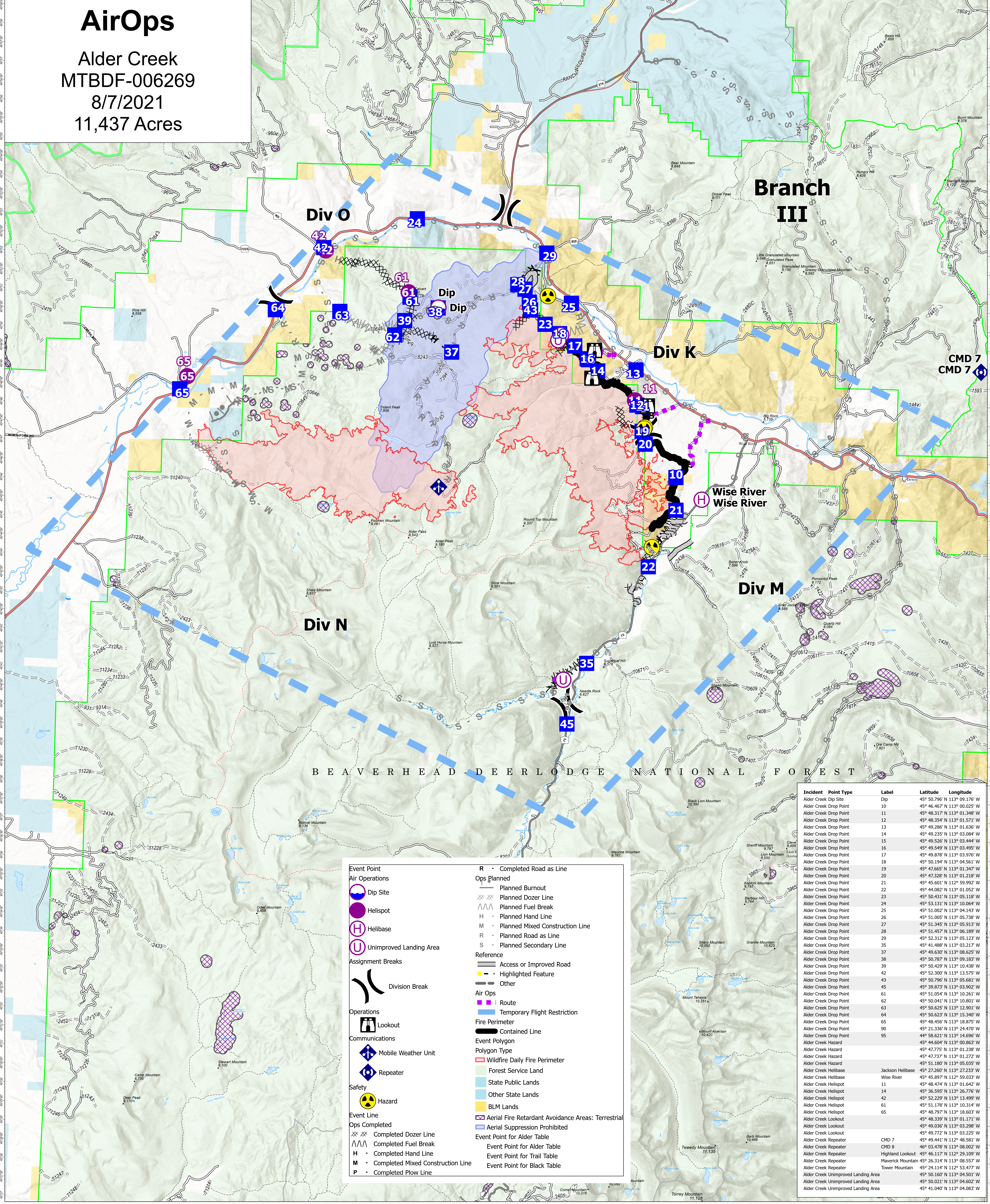


# AirOps

Alder Creek  
MTBDF-006269  
8/7/2021  
11,437 Acres



<b>Event Point</b>	<b>R</b> - Completed Road as Line
<b>Air Operations</b>	<b>Ops Planned</b>
Dip Site	Planned Burnout
Helispot	Planned Dozer Line
Helibase	Planned Fuel Break
Unimproved Landing Area	Planned Hand Line
<b>Assignment Breaks</b>	Planned Mixed Construction Line
Division Break	Planned Road as Line
<b>Operations</b>	Planned Secondary Line
Lookout	<b>Reference</b>
<b>Communications</b>	Access or Improved Road
Mobile Weather Unit	Highlighted Feature
Repeater	Other
<b>Safety</b>	<b>Air Ops</b>
Hazard	Route
<b>Event Line</b>	Temporary Flight Restriction
Completed Dozer Line	Fire Perimeter
Completed Fuel Break	Contained Line
Completed Hand Line	<b>Event Polygon</b>
Completed Mixed Construction Line	Wildfire Daily Fire Perimeter
Completed Plow Line	Forest Service Land
	State Public Lands
	Other State Lands
	BLM Lands
	Aerial Fire Retardant Avoidance Areas: Terrestrial
	Aerial Suppression Prohibited
	<b>Event Point for Alder Table</b>
	Event Point for Alder Table
	Event Point for Trail Table
	Event Point for Black Table

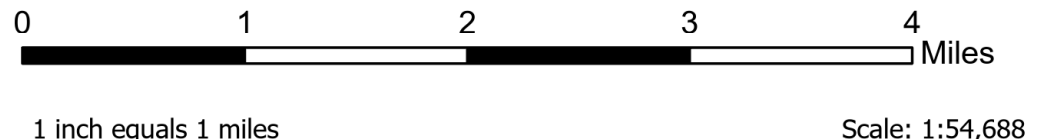
Incident	Point Type	Label	Latitude	Longitude
Alder Creek	Dip Site	Dip	45° 50.796' N 113° 09.176' W	
Alder Creek	Drop Point	10	45° 46.467' N 113° 00.025' W	
Alder Creek	Drop Point	11	45° 48.317' N 113° 01.348' W	
Alder Creek	Drop Point	12	45° 48.354' N 113° 01.571' W	
Alder Creek	Drop Point	13	45° 49.286' N 113° 01.636' W	
Alder Creek	Drop Point	14	45° 49.235' N 113° 03.084' W	
Alder Creek	Drop Point	15	45° 49.526' N 113° 03.444' W	
Alder Creek	Drop Point	16	45° 49.549' N 113° 03.495' W	
Alder Creek	Drop Point	17	45° 49.878' N 113° 03.976' W	
Alder Creek	Drop Point	18	45° 50.194' N 113° 04.561' W	
Alder Creek	Drop Point	19	45° 47.665' N 113° 01.347' W	
Alder Creek	Drop Point	20	45° 47.328' N 113° 01.218' W	
Alder Creek	Drop Point	21	45° 45.601' N 112° 59.992' W	
Alder Creek	Drop Point	22	45° 44.082' N 113° 01.052' W	
Alder Creek	Drop Point	23	45° 50.431' N 113° 05.118' W	
Alder Creek	Drop Point	24	45° 53.131' N 113° 10.064' W	
Alder Creek	Drop Point	25	45° 51.002' N 113° 04.143' W	
Alder Creek	Drop Point	26	45° 50.941' N 113° 10.801' W	
Alder Creek	Drop Point	27	45° 51.345' N 113° 05.913' W	
Alder Creek	Drop Point	28	45° 51.457' N 113° 01.189' W	
Alder Creek	Drop Point	29	45° 52.312' N 113° 05.123' W	
Alder Creek	Drop Point	35	45° 41.488' N 113° 03.217' W	
Alder Creek	Drop Point	37	45° 49.630' N 113° 08.625' W	
Alder Creek	Drop Point	38	45° 50.787' N 113° 09.183' W	
Alder Creek	Drop Point	39	45° 50.429' N 113° 10.438' W	
Alder Creek	Drop Point	42	45° 52.300' N 113° 13.575' W	
Alder Creek	Drop Point	43	45° 50.796' N 113° 05.681' W	
Alder Creek	Drop Point	45	45° 39.873' N 113° 03.902' W	
Alder Creek	Drop Point	61	45° 51.054' N 113° 10.261' W	
Alder Creek	Drop Point	62	45° 50.941' N 113° 10.801' W	
Alder Creek	Drop Point	63	45° 50.625' N 113° 12.901' W	
Alder Creek	Drop Point	64	45° 50.623' N 113° 15.340' W	
Alder Creek	Drop Point	65	45° 48.456' N 113° 18.875' W	
Alder Creek	Drop Point	90	45° 21.336' N 113° 24.470' W	
Alder Creek	Drop Point	95	44° 58.621' N 113° 14.696' W	
Alder Creek	Hazard		45° 44.604' N 113° 08.863' W	
Alder Creek	Hazard		45° 47.775' N 113° 01.238' W	
Alder Creek	Hazard		45° 47.737' N 113° 01.272' W	
Alder Creek	Hazard		45° 51.180' N 113° 05.035' W	
Alder Creek	Helibase	Jackson Helibase	45° 27.260' N 113° 27.233' W	
Alder Creek	Helibase	Wise River	45° 45.897' N 112° 59.033' W	
Alder Creek	Helispot		45° 48.474' N 113° 01.642' W	
Alder Creek	Helispot		45° 36.595' N 113° 26.761' W	
Alder Creek	Helispot		45° 52.229' N 113° 13.499' W	
Alder Creek	Helispot		45° 51.178' N 113° 10.314' W	
Alder Creek	Helispot		45° 48.797' N 113° 18.603' W	
Alder Creek	Lookout		45° 48.339' N 113° 01.171' W	
Alder Creek	Lookout		45° 49.036' N 113° 03.298' W	
Alder Creek	Lookout		45° 49.772' N 113° 03.225' W	
Alder Creek	Repeater	CMD 7	45° 49.441' N 112° 48.581' W	
Alder Creek	Repeater	CMD 8	46° 03.478' N 113° 08.002' W	
Alder Creek	Repeater	Highland Lookout	45° 46.117' N 112° 29.109' W	
Alder Creek	Repeater	Maverick Mountain	45° 26.314' N 113° 08.557' W	
Alder Creek	Repeater	Tower Mountain	45° 24.114' N 112° 53.477' W	
Alder Creek	Unimproved Landing Area		45° 50.160' N 113° 04.501' W	
Alder Creek	Unimproved Landing Area		45° 50.021' N 113° 04.602' W	
Alder Creek	Unimproved Landing Area		45° 41.040' N 113° 04.083' W	

### Flight Restriction Information

Alder Creek - 1/7629 - 12,500ft ceiling  
Trail Creek - 1/7630 - 11,500ft ceiling  
Black Mountain - 1/1730 - 10,500ft ceiling



Fire perimeter updated from Acres from IR on 08/04/21 21:30



SW Team 1  
8/6/2021 1954  
North American 1983 Datum. LatLong Grid