

# Public Information

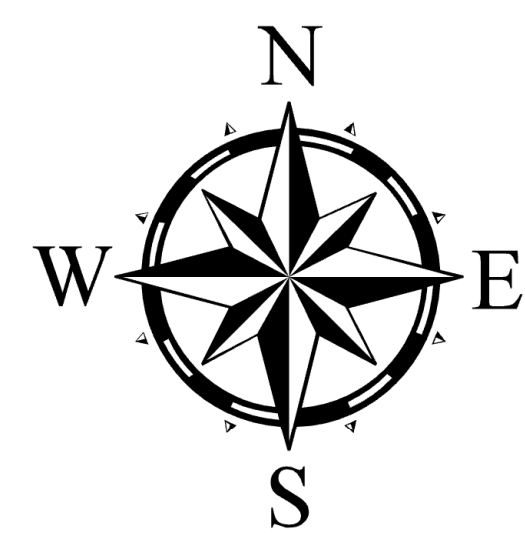
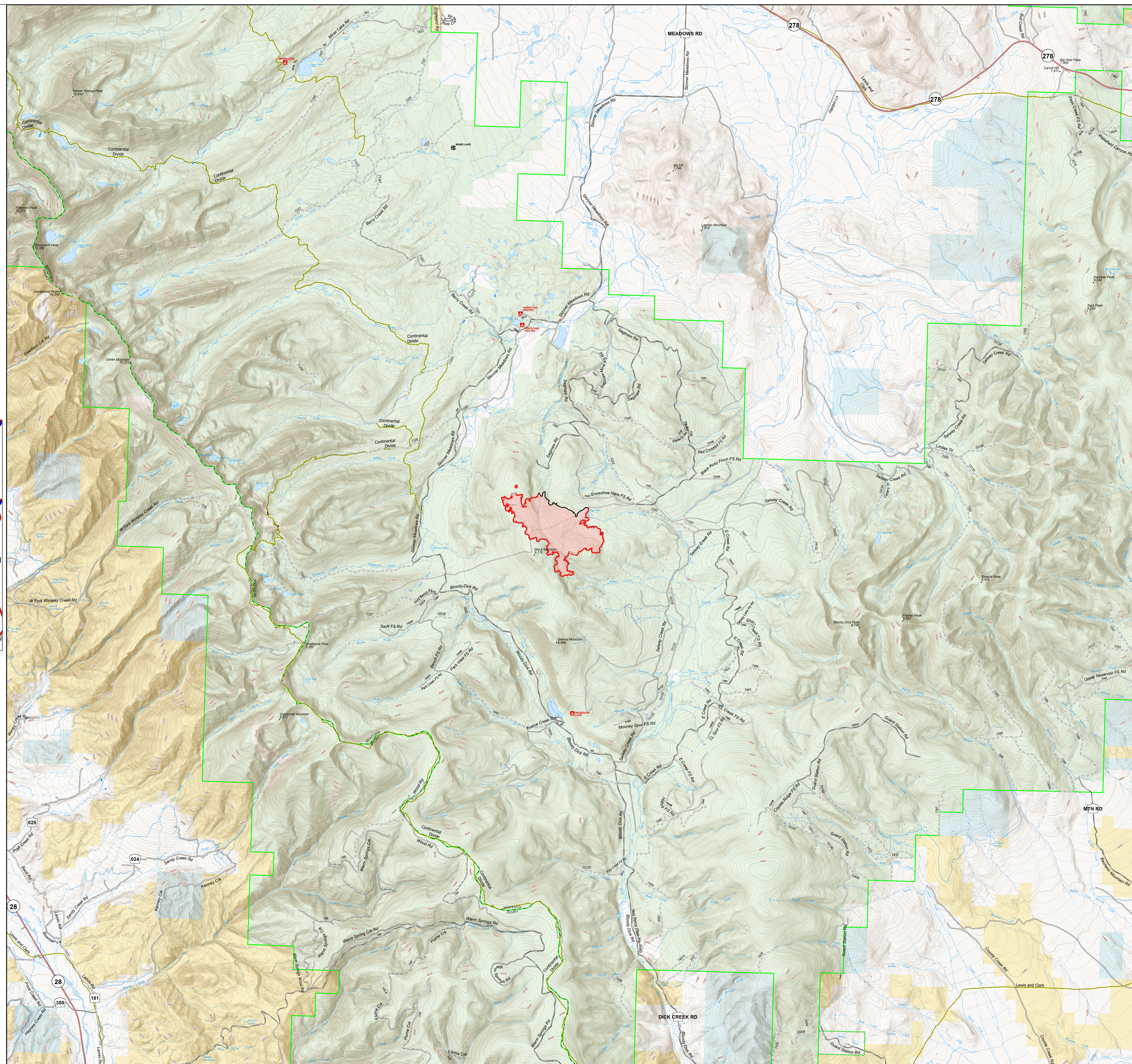
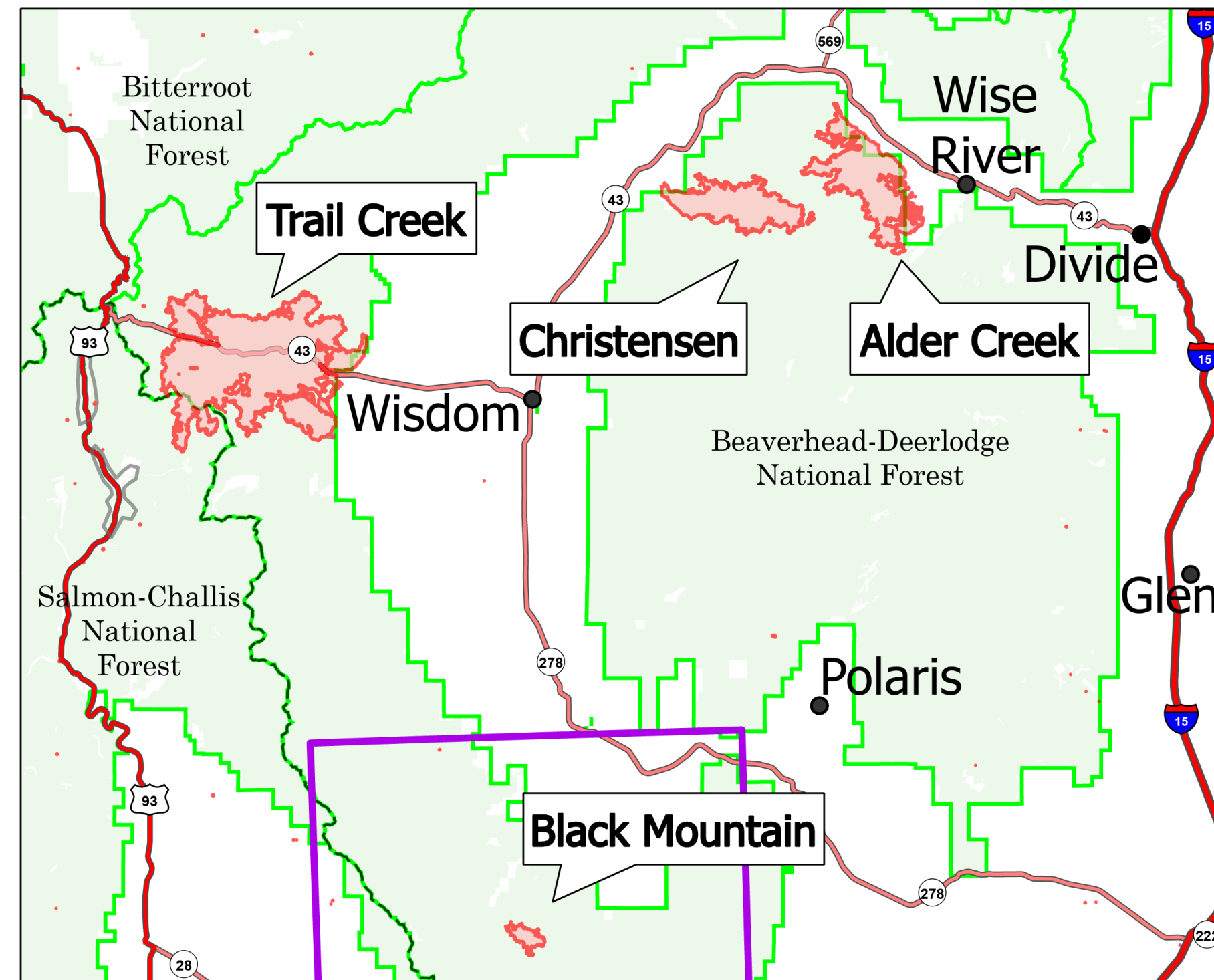
Black Mountain  
MT-BDF-006306

8/7/2021

1,042 acres

14% Contained

- Wildfire Daily Fire Perimeter
- State Public Lands
- Other State Lands
- Bureau of Land Management Lands
- Forest Service Land
- Big Hole Battlefield
- Fire Edge
- Contained Line



Fire perimeter updated from  
Acres from IR on 08/06/21 22:36

0 0.75 1.5 2.25 3 Miles

1 inch equals 0.7 miles Scale: 1:41,392

