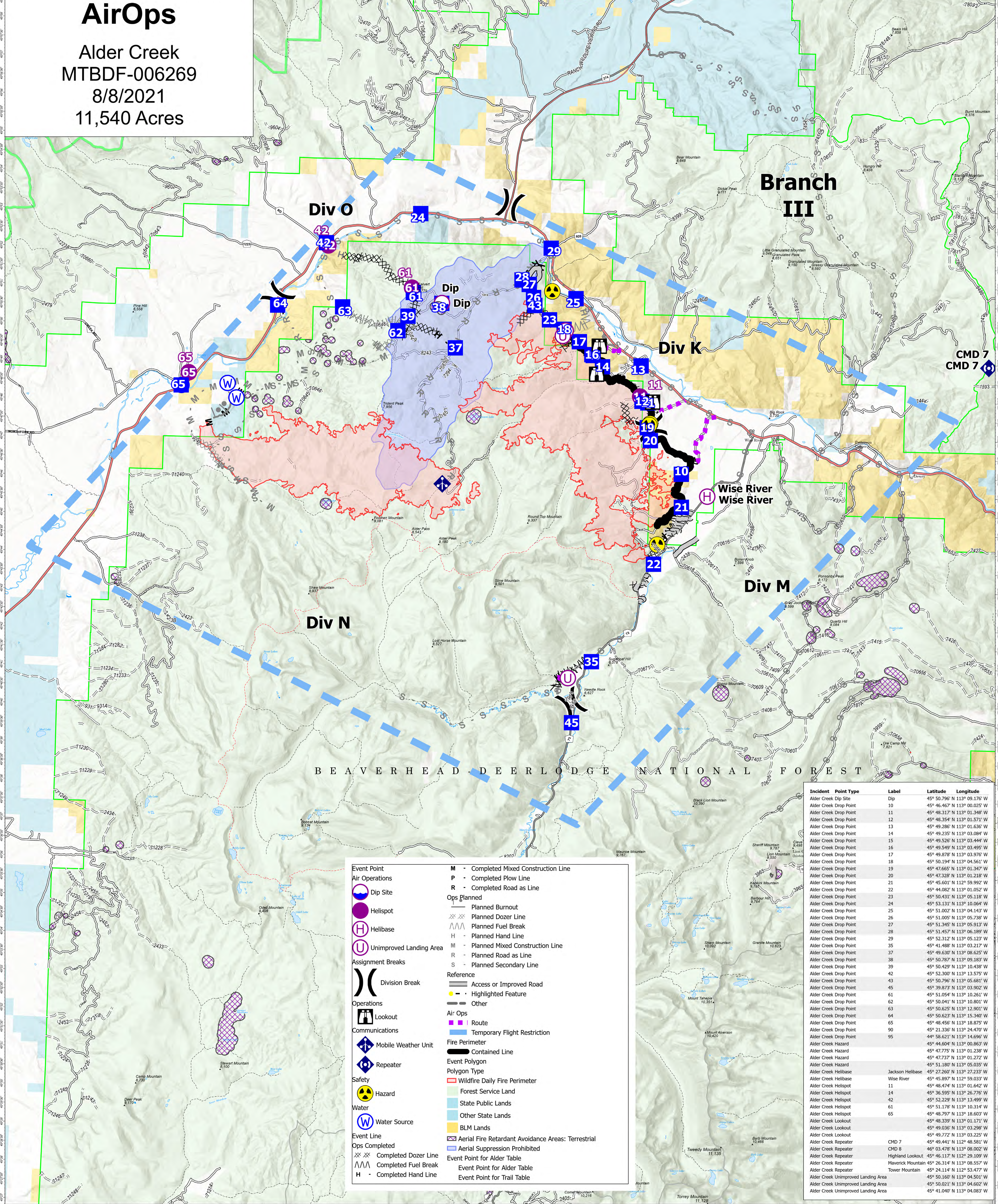


AirOps

Alder Creek
MTBDF-006269
8/8/2021
11,540 Acres



Incident	Point Type	Label	Latitude	Longitude
Alder Creek Dip Site	Dip	Dip	45° 50.796' N 113° 09.176' W	
Alder Creek Drop Point	Drop Point	10	45° 46.467' N 113° 00.025' W	
Alder Creek Drop Point	Drop Point	11	45° 48.317' N 113° 01.348' W	
Alder Creek Drop Point	Drop Point	12	45° 48.354' N 113° 01.571' W	
Alder Creek Drop Point	Drop Point	13	45° 49.286' N 113° 01.636' W	
Alder Creek Drop Point	Drop Point	14	45° 49.235' N 113° 03.084' W	
Alder Creek Drop Point	Drop Point	15	45° 49.526' N 113° 03.444' W	
Alder Creek Drop Point	Drop Point	16	45° 49.549' N 113° 03.495' W	
Alder Creek Drop Point	Drop Point	17	45° 49.878' N 113° 03.976' W	
Alder Creek Drop Point	Drop Point	18	45° 50.194' N 113° 04.561' W	
Alder Creek Drop Point	Drop Point	19	45° 47.665' N 113° 01.347' W	
Alder Creek Drop Point	Drop Point	20	45° 47.328' N 113° 01.218' W	
Alder Creek Drop Point	Drop Point	21	45° 45.601' N 112° 59.992' W	
Alder Creek Drop Point	Drop Point	22	45° 44.082' N 113° 01.052' W	
Alder Creek Drop Point	Drop Point	23	45° 50.431' N 113° 05.118' W	
Alder Creek Drop Point	Drop Point	24	45° 53.131' N 113° 10.064' W	
Alder Creek Drop Point	Drop Point	25	45° 51.002' N 113° 04.143' W	
Alder Creek Drop Point	Drop Point	26	45° 51.005' N 113° 05.238' W	
Alder Creek Drop Point	Drop Point	27	45° 51.265' N 113° 05.313' W	
Alder Creek Drop Point	Drop Point	28	45° 51.457' N 113° 06.189' W	
Alder Creek Drop Point	Drop Point	29	45° 52.312' N 113° 03.127' W	
Alder Creek Drop Point	Drop Point	35	45° 41.488' N 113° 03.217' W	
Alder Creek Drop Point	Drop Point	37	45° 49.630' N 113° 08.625' W	
Alder Creek Drop Point	Drop Point	38	45° 50.787' N 113° 09.183' W	
Alder Creek Drop Point	Drop Point	39	45° 50.429' N 113° 10.438' W	
Alder Creek Drop Point	Drop Point	42	45° 52.300' N 113° 13.575' W	
Alder Creek Drop Point	Drop Point	43	45° 50.796' N 113° 05.681' W	
Alder Creek Drop Point	Drop Point	45	45° 39.873' N 113° 03.261' W	
Alder Creek Drop Point	Drop Point	61	45° 51.054' N 113° 10.202' W	
Alder Creek Drop Point	Drop Point	62	45° 50.041' N 113° 10.801' W	
Alder Creek Drop Point	Drop Point	63	45° 50.625' N 113° 12.901' W	
Alder Creek Drop Point	Drop Point	64	45° 50.623' N 113° 15.240' W	
Alder Creek Drop Point	Drop Point	65	45° 51.265' N 113° 05.313' W	
Alder Creek Drop Point	Drop Point	90	45° 21.326' N 113° 24.470' W	
Alder Creek Drop Point	Drop Point	95	44° 58.621' N 113° 14.696' W	
Alder Creek Hazard	Hazard		45° 44.604' N 113° 00.863' W	
Alder Creek Hazard	Hazard		45° 47.775' N 113° 01.238' W	
Alder Creek Hazard	Hazard		45° 47.737' N 113° 01.272' W	
Alder Creek Hazard	Hazard		45° 51.180' N 113° 05.035' W	
Alder Creek Helibase	Helibase	Jackson Helibase	45° 27.260' N 113° 27.233' W	
Alder Creek Helibase	Helibase	Wise River	45° 45.897' N 112° 59.033' W	
Alder Creek Helispot	Helispot		45° 48.474' N 113° 01.642' W	
Alder Creek Helispot	Helispot		45° 36.595' N 113° 26.776' W	
Alder Creek Helispot	Helispot		45° 52.229' N 113° 13.499' W	
Alder Creek Helispot	Helispot		45° 51.178' N 113° 10.314' W	
Alder Creek Helispot	Helispot		45° 46.777' N 113° 08.503' W	
Alder Creek Helispot	Helispot		45° 46.339' N 113° 01.171' W	
Alder Creek Helispot	Helispot		45° 49.036' N 113° 03.298' W	
Alder Creek Lookout	Lookout		45° 49.772' N 113° 03.225' W	
Alder Creek Lookout	Lookout		45° 49.441' N 112° 48.581' W	
Alder Creek Repeater	Repeater	CMD 7	45° 03.478' N 113° 08.002' W	
Alder Creek Repeater	Repeater	CMD 8	45° 46.117' N 112° 29.109' W	
Alder Creek Repeater	Repeater	Highland Lookout	45° 26.314' N 113° 08.557' W	
Alder Creek Repeater	Repeater	Maverick Lookout	45° 24.114' N 112° 53.477' W	
Alder Creek Repeater	Repeater	Tower Mountain	45° 50.160' N 113° 04.501' W	
Alder Creek Unimproved Landing Area	Unimproved Landing Area		45° 50.021' N 113° 04.602' W	
Alder Creek Unimproved Landing Area	Unimproved Landing Area		45° 41.040' N 113° 04.083' W	

Event Point

- Air Operations
 - Dip Site
 - Helispot
 - Helibase
 - Unimproved Landing Area
- Assignment Breaks
 - Division Break
- Operations
 - Lookout
- Communications
 - Mobile Weather Unit
 - Repeater
- Safety
 - Hazard
- Water
 - Water Source
- Event Line
 - Ops Completed
 - Completed Dozer Line
 - Completed Fuel Break
 - Completed Hand Line
 - M - Completed Mixed Construction Line
 - P - Completed Plow Line
 - R - Completed Road as Line

Ops Planned

- Planned Burnout
- Planned Dozer Line
- Planned Fuel Break
- Planned Hand Line
- M - Planned Mixed Construction Line
- R - Planned Road as Line
- S - Planned Secondary Line

Reference

- Access or Improved Road
- Highlighted Feature
- Other

Air Ops

- Route
- Temporary Flight Restriction

Fire Perimeter

- Contained Line

Event Polygon

- Wildfire Daily Fire Perimeter

Polygon Type

- Forest Service Land
- State Public Lands
- Other State Lands
- BLM Lands
- Aerial Fire Retardant Avoidance Areas: Terrestrial
- Aerial Suppression Prohibited

Event Point for Alder Table

- Event Point for Alder Table
- Event Point for Trail Table

Flight Restriction Information

Alder Creek - 1/7629 - 12,500ft ceiling
Trail Creek - 1/7630 - 11,500ft ceiling
Black Mountain - 1/1730 - 10,500ft ceiling



SA Blue Team
8/7/2021 2056
North American 1983 Datum, LatLong Grid

Fire perimeter updated from Acres from IR on 08/06/21 22:36

Scale: 1:54,668
1 inch equals 1 mile