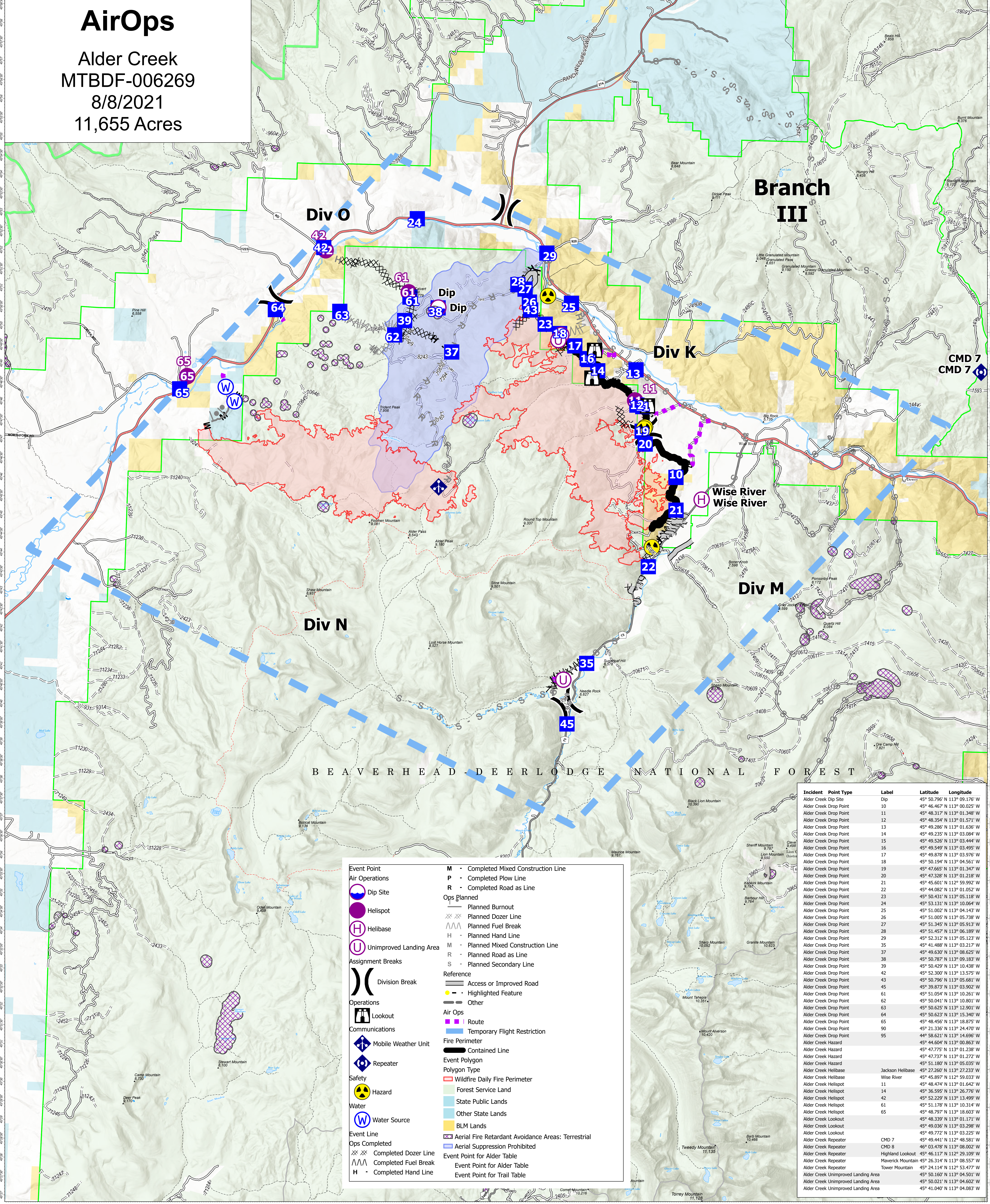


AirOps

Alder Creek
MTBDF-006269
8/8/2021
11,655 Acres



Event Point	M - Completed Mixed Construction Line
Air Operations	P - Completed Plow Line
Dip Site	R - Completed Road as Line
Helispot	Ops Planned
Helibase	Planned Burnout
Unimproved Landing Area	Planned Dozer Line
Assignment Breaks	Planned Fuel Break
Division Break	H - Planned Hand Line
Operations	M - Planned Mixed Construction Line
Lookout	R - Planned Road as Line
Communications	S - Planned Secondary Line
Mobile Weather Unit	Reference
Repeater	Access or Improved Road
Safety	Highlighted Feature
Hazard	Other
Water	Air Ops
Water Source	Route
Event Line	Temporary Flight Restriction
Ops Completed	Fire Perimeter
Completed Dozer Line	Contained Line
Completed Fuel Break	Event Polygon
Completed Hand Line	Polygon Type
	Wildfire Daily Fire Perimeter
	Forest Service Land
	State Public Lands
	Other State Lands
	BLM Lands
	Aerial Fire Retardant Avoidance Areas: Terrestrial
	Aerial Suppression Prohibited
	Event Point for Alder Table
	Event Point for Trail Table

Incident	Point Type	Label	Latitude	Longitude
Alder Creek	Dip Site	Dip	45° 50.796' N	113° 09.176' W
Alder Creek	Drop Point	10	45° 46.467' N	113° 00.025' W
Alder Creek	Drop Point	11	45° 48.317' N	113° 01.348' W
Alder Creek	Drop Point	12	45° 48.354' N	113° 01.571' W
Alder Creek	Drop Point	13	45° 49.285' N	113° 01.636' W
Alder Creek	Drop Point	14	45° 49.235' N	113° 03.084' W
Alder Creek	Drop Point	15	45° 49.526' N	113° 03.444' W
Alder Creek	Drop Point	16	45° 49.549' N	113° 03.495' W
Alder Creek	Drop Point	17	45° 49.878' N	113° 03.976' W
Alder Creek	Drop Point	18	45° 50.194' N	113° 04.561' W
Alder Creek	Drop Point	19	45° 47.665' N	113° 01.347' W
Alder Creek	Drop Point	20	45° 47.328' N	113° 01.218' W
Alder Creek	Drop Point	21	45° 45.601' N	113° 59.992' W
Alder Creek	Drop Point	22	45° 44.082' N	113° 01.052' W
Alder Creek	Drop Point	23	45° 50.431' N	113° 05.118' W
Alder Creek	Drop Point	24	45° 53.131' N	113° 10.064' W
Alder Creek	Drop Point	25	45° 51.002' N	113° 04.143' W
Alder Creek	Drop Point	26	45° 50.041' N	113° 10.801' W
Alder Creek	Drop Point	27	45° 51.345' N	113° 05.913' W
Alder Creek	Drop Point	28	45° 51.457' N	113° 06.189' W
Alder Creek	Drop Point	29	45° 52.312' N	113° 05.123' W
Alder Creek	Drop Point	35	45° 41.488' N	113° 03.217' W
Alder Creek	Drop Point	37	45° 49.630' N	113° 08.625' W
Alder Creek	Drop Point	38	45° 50.787' N	113° 09.183' W
Alder Creek	Drop Point	39	45° 50.429' N	113° 10.438' W
Alder Creek	Drop Point	42	45° 52.300' N	113° 13.575' W
Alder Creek	Drop Point	43	45° 50.796' N	113° 05.681' W
Alder Creek	Drop Point	45	45° 39.873' N	113° 03.902' W
Alder Creek	Drop Point	61	45° 51.054' N	113° 10.261' W
Alder Creek	Drop Point	62	45° 50.041' N	113° 10.801' W
Alder Creek	Drop Point	63	45° 50.625' N	113° 12.901' W
Alder Creek	Drop Point	64	45° 50.623' N	113° 15.340' W
Alder Creek	Drop Point	65	45° 48.456' N	113° 18.875' W
Alder Creek	Drop Point	90	45° 21.336' N	113° 24.470' W
Alder Creek	Drop Point	95	44° 58.621' N	113° 14.696' W
Alder Creek	Hazard		45° 44.604' N	113° 08.863' W
Alder Creek	Hazard		45° 47.775' N	113° 01.238' W
Alder Creek	Hazard		45° 47.737' N	113° 01.272' W
Alder Creek	Hazard		45° 51.180' N	113° 05.035' W
Alder Creek	Helibase	Jackson Helibase	45° 27.260' N	113° 27.233' W
Alder Creek	Helispot	Wise River	45° 45.897' N	112° 59.033' W
Alder Creek	Helispot		45° 48.474' N	113° 01.642' W
Alder Creek	Helispot		45° 35.595' N	113° 26.761' W
Alder Creek	Helispot		45° 52.229' N	113° 13.499' W
Alder Creek	Helispot		45° 51.178' N	113° 10.314' W
Alder Creek	Helispot		45° 48.797' N	113° 18.603' W
Alder Creek	Lookout		45° 48.339' N	113° 01.171' W
Alder Creek	Lookout		45° 49.036' N	113° 03.298' W
Alder Creek	Lookout		45° 49.772' N	113° 03.225' W
Alder Creek	Repeater	CMD 7	45° 49.441' N	112° 48.581' W
Alder Creek	Repeater	CMD 8	46° 03.478' N	113° 08.002' W
Alder Creek	Repeater	Highland Lookout	45° 46.117' N	112° 29.109' W
Alder Creek	Repeater	Maverick Mountain	45° 26.314' N	113° 08.557' W
Alder Creek	Repeater	Tower Mountain	45° 24.114' N	112° 53.477' W
Alder Creek	Unimproved Landing Area		45° 50.160' N	113° 04.501' W
Alder Creek	Unimproved Landing Area		45° 50.021' N	113° 04.602' W
Alder Creek	Unimproved Landing Area		45° 41.040' N	113° 04.083' W

Flight Restriction Information

Alder Creek - 1/7629- 12,500ft ceiling
Trail Creek - 1/7630 - 11,500ft ceiling
Black Mountain - 1/1730 - 10,500ft ceiling



SA Blue Team
8/8/2021 0935
North American 1983 Datum, LatLong Grid

Fire perimeter updated from Acres from IR on 08/07/21 23:02

Scale: 1:54,688
1 inch equals 1 mile