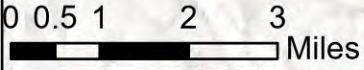
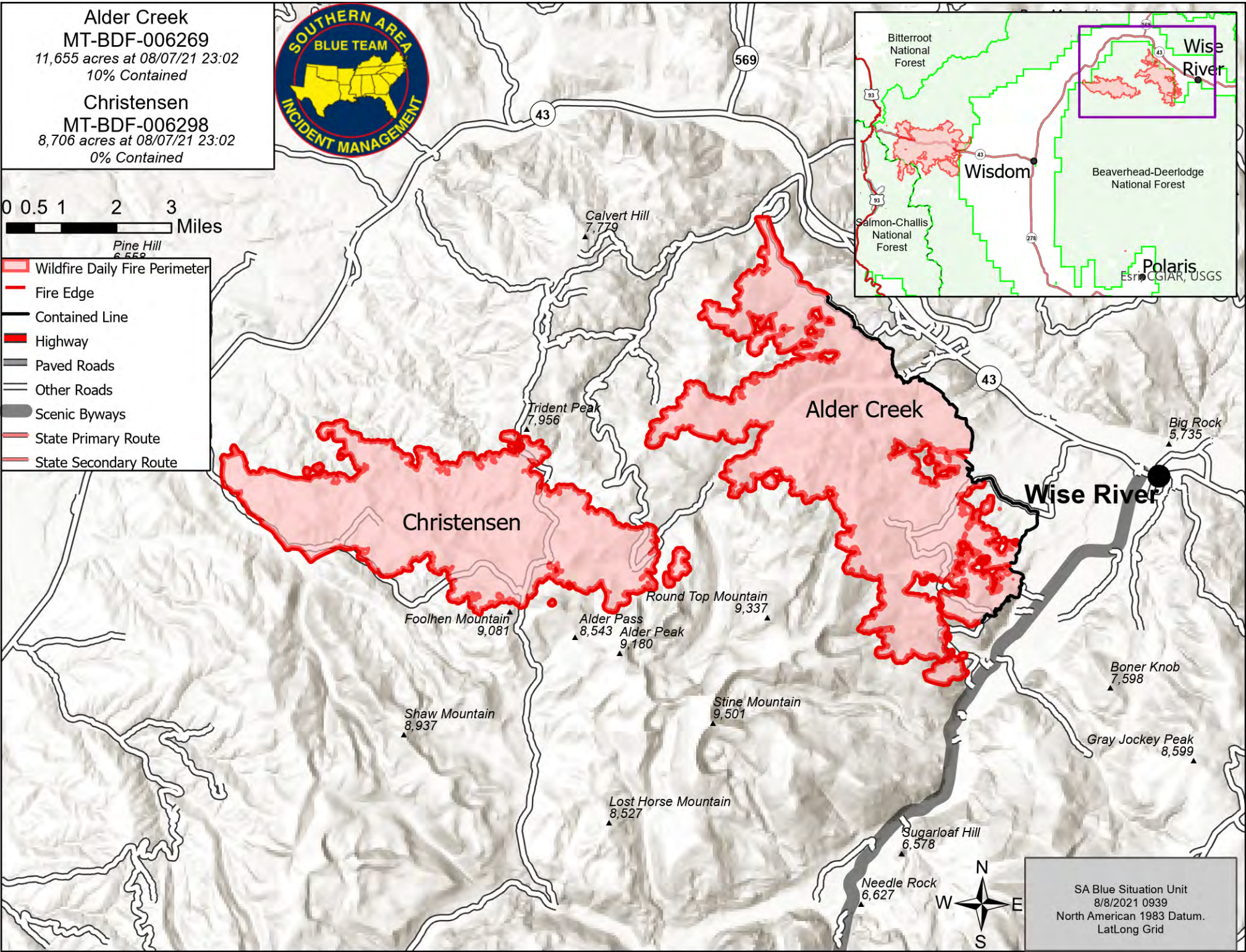


**Alder Creek**  
 MT-BDF-006269  
 11,655 acres at 08/07/21 23:02  
 10% Contained

**Christensen**  
 MT-BDF-006298  
 8,706 acres at 08/07/21 23:02  
 0% Contained



- Wildfire Daily Fire Perimeter
- Fire Edge
- Contained Line
- Highway
- Paved Roads
- Other Roads
- Scenic Byways
- State Primary Route
- State Secondary Route



**Christensen**

**Alder Creek**

**Wise River**

Foolhen Mountain  
▲ 9,081

Alder Pass  
▲ 8,543

Alder Peak  
▲ 9,180

Round Top Mountain  
▲ 9,337

Shaw Mountain  
▲ 8,937

Lost Horse Mountain  
▲ 8,527

Stine Mountain  
▲ 9,501

Sugarloaf Hill  
▲ 6,578

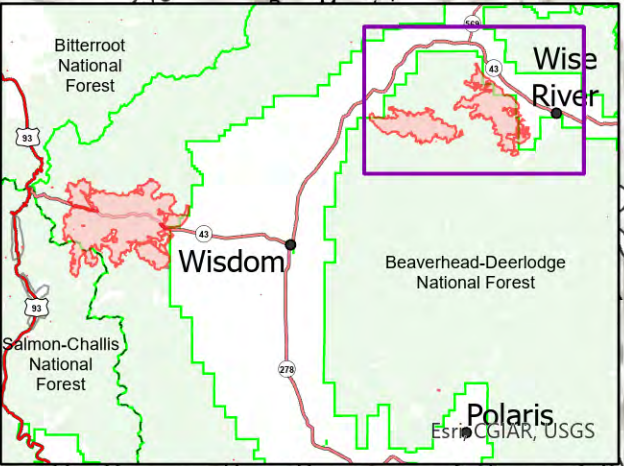
Needle Rock  
▲ 6,627

Calvert Hill  
▲ 7,779

43

569

43



SA Blue Situation Unit  
 8/8/2021 0939  
 North American 1983 Datum.  
 LatLong Grid