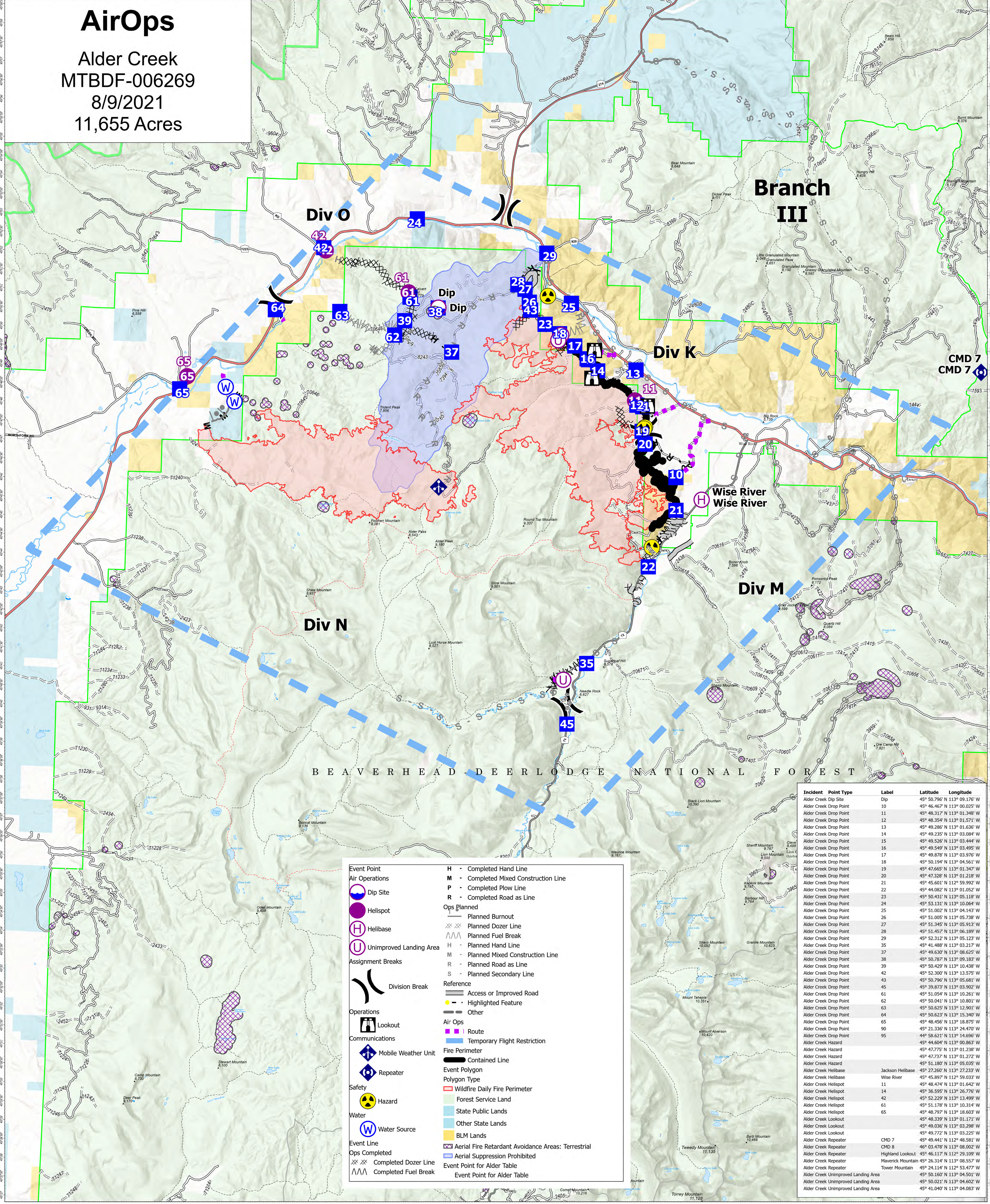


AirOps

Alder Creek
MTBDF-006269
8/9/2021
11,655 Acres



BEAVERHEAD-DEERLODGE NATIONAL FOREST

Branch III

Div O

Div K

Div M

Div N

Wise River
Wise River

CMD 7
CMD 7

	Event Point		H - Completed Hand Line
	Air Operations		M - Completed Mixed Construction Line
	Dip Site		P - Completed Plow Line
	Helispot		R - Completed Road as Line
	Helibase		Ops Planned
	Unimproved Landing Area		Planned Burnout
	Assignment Breaks		Planned Dozer Line
	Division Break		Planned Fuel Break
	Lookout		Planned Hand Line
	Mobile Weather Unit		Planned Mixed Construction Line
	Repeater		Planned Road as Line
	Hazard		Planned Secondary Line
	Water Source		Reference
	Event Line		Access or Improved Road
	Ops Completed		Highlighted Feature
	Completed Dozer Line		Other
	Completed Fuel Break		Air Ops
	Completed Fuel Break		Route
	Completed Fuel Break		Temporary Flight Restriction
	Completed Fuel Break		Fire Perimeter
	Completed Fuel Break		Contained Line
	Completed Fuel Break		Event Polygon
	Completed Fuel Break		Wildfire Daily Fire Perimeter
	Completed Fuel Break		Forest Service Land
	Completed Fuel Break		State Public Lands
	Completed Fuel Break		Other State Lands
	Completed Fuel Break		BLM Lands
	Completed Fuel Break		Aerial Fire Retardant Avoidance Areas: Terrestrial
	Completed Fuel Break		Aerial Suppression Prohibited
	Completed Fuel Break		Event Point for Alder Table
	Completed Fuel Break		Event Point for Alder Table

Incident	Point Type	Label	Latitude	Longitude
Alder Creek	Dip Site	Dip	45° 50.796' N	113° 09.176' W
Alder Creek	Drop Point	10	45° 46.467' N	113° 00.025' W
Alder Creek	Drop Point	11	45° 48.317' N	113° 01.348' W
Alder Creek	Drop Point	12	45° 48.354' N	113° 01.571' W
Alder Creek	Drop Point	13	45° 49.296' N	113° 01.636' W
Alder Creek	Drop Point	14	45° 49.235' N	113° 03.084' W
Alder Creek	Drop Point	15	45° 49.526' N	113° 03.444' W
Alder Creek	Drop Point	16	45° 49.549' N	113° 03.495' W
Alder Creek	Drop Point	17	45° 49.878' N	113° 03.976' W
Alder Creek	Drop Point	18	45° 50.194' N	113° 04.561' W
Alder Creek	Drop Point	19	45° 47.665' N	113° 01.347' W
Alder Creek	Drop Point	20	45° 47.328' N	113° 01.218' W
Alder Creek	Drop Point	21	45° 45.601' N	113° 59.992' W
Alder Creek	Drop Point	22	45° 44.082' N	113° 01.052' W
Alder Creek	Drop Point	23	45° 50.431' N	113° 05.118' W
Alder Creek	Drop Point	24	45° 53.131' N	113° 10.064' W
Alder Creek	Drop Point	25	45° 51.002' N	113° 04.143' W
Alder Creek	Drop Point	26	45° 50.041' N	113° 10.801' W
Alder Creek	Drop Point	27	45° 51.345' N	113° 05.913' W
Alder Creek	Drop Point	28	45° 51.457' N	113° 06.189' W
Alder Creek	Drop Point	29	45° 52.312' N	113° 05.123' W
Alder Creek	Drop Point	35	45° 41.488' N	113° 03.217' W
Alder Creek	Drop Point	37	45° 49.630' N	113° 08.625' W
Alder Creek	Drop Point	38	45° 50.787' N	113° 09.183' W
Alder Creek	Drop Point	39	45° 50.429' N	113° 10.438' W
Alder Creek	Drop Point	42	45° 52.300' N	113° 13.575' W
Alder Creek	Drop Point	43	45° 50.796' N	113° 05.681' W
Alder Creek	Drop Point	45	45° 39.873' N	113° 03.902' W
Alder Creek	Drop Point	61	45° 51.054' N	113° 10.261' W
Alder Creek	Drop Point	62	45° 50.041' N	113° 10.801' W
Alder Creek	Drop Point	63	45° 50.625' N	113° 12.901' W
Alder Creek	Drop Point	64	45° 50.623' N	113° 15.340' W
Alder Creek	Drop Point	65	45° 48.456' N	113° 18.875' W
Alder Creek	Drop Point	90	45° 21.336' N	113° 24.470' W
Alder Creek	Drop Point	95	44° 58.621' N	113° 14.696' W
Alder Creek	Hazard	Alder Creek Hazard	45° 44.604' N	113° 08.863' W
Alder Creek	Hazard	Alder Creek Hazard	45° 47.775' N	113° 01.238' W
Alder Creek	Hazard	Alder Creek Hazard	45° 47.737' N	113° 01.272' W
Alder Creek	Hazard	Alder Creek Hazard	45° 51.180' N	113° 05.035' W
Alder Creek	Helibase	Jackson Helibase	45° 27.260' N	113° 27.233' W
Alder Creek	Helibase	Wise River	45° 45.897' N	112° 59.033' W
Alder Creek	Helispot	Alder Creek Helispot	45° 48.474' N	113° 01.642' W
Alder Creek	Helispot	Alder Creek Helispot	45° 35.595' N	113° 26.791' W
Alder Creek	Helispot	Alder Creek Helispot	45° 52.229' N	113° 12.499' W
Alder Creek	Helispot	Alder Creek Helispot	45° 51.178' N	113° 10.314' W
Alder Creek	Helispot	Alder Creek Helispot	45° 48.797' N	113° 18.603' W
Alder Creek	Lookout	Alder Creek Lookout	45° 48.339' N	113° 01.171' W
Alder Creek	Lookout	Alder Creek Lookout	45° 49.036' N	113° 03.298' W
Alder Creek	Lookout	Alder Creek Lookout	45° 49.772' N	113° 03.225' W
Alder Creek	Repeater	Alder Creek Repeater	45° 49.441' N	113° 48.581' W
Alder Creek	Repeater	Alder Creek Repeater	46° 03.478' N	113° 08.002' W
Alder Creek	Repeater	Highland Lookout	45° 46.117' N	112° 29.109' W
Alder Creek	Repeater	Maverick Mountain	45° 26.314' N	113° 08.557' W
Alder Creek	Repeater	Tower Mountain	45° 24.114' N	112° 53.477' W
Alder Creek	Unimproved Landing Area	Alder Creek Unimproved Landing Area	45° 50.160' N	113° 04.501' W
Alder Creek	Unimproved Landing Area	Alder Creek Unimproved Landing Area	45° 50.021' N	113° 04.602' W
Alder Creek	Unimproved Landing Area	Alder Creek Unimproved Landing Area	45° 41.040' N	113° 04.083' W

Flight Restriction Information

Alder Creek - 1/7629- 12,500ft ceiling
Trail Creek - 1/7630 - 11,500ft ceiling
Black Mountain - 1/1730 - 10,500ft ceiling



SA Blue Team
8/8/2021 2105
North American 1983 Datum. Lat/Long Grid



Fire perimeter updated from
Acres from IR on 08/07/21 23:02

0 1 2 3 4 Miles
1 inch equals 1 mile
Scale: 1:54,688