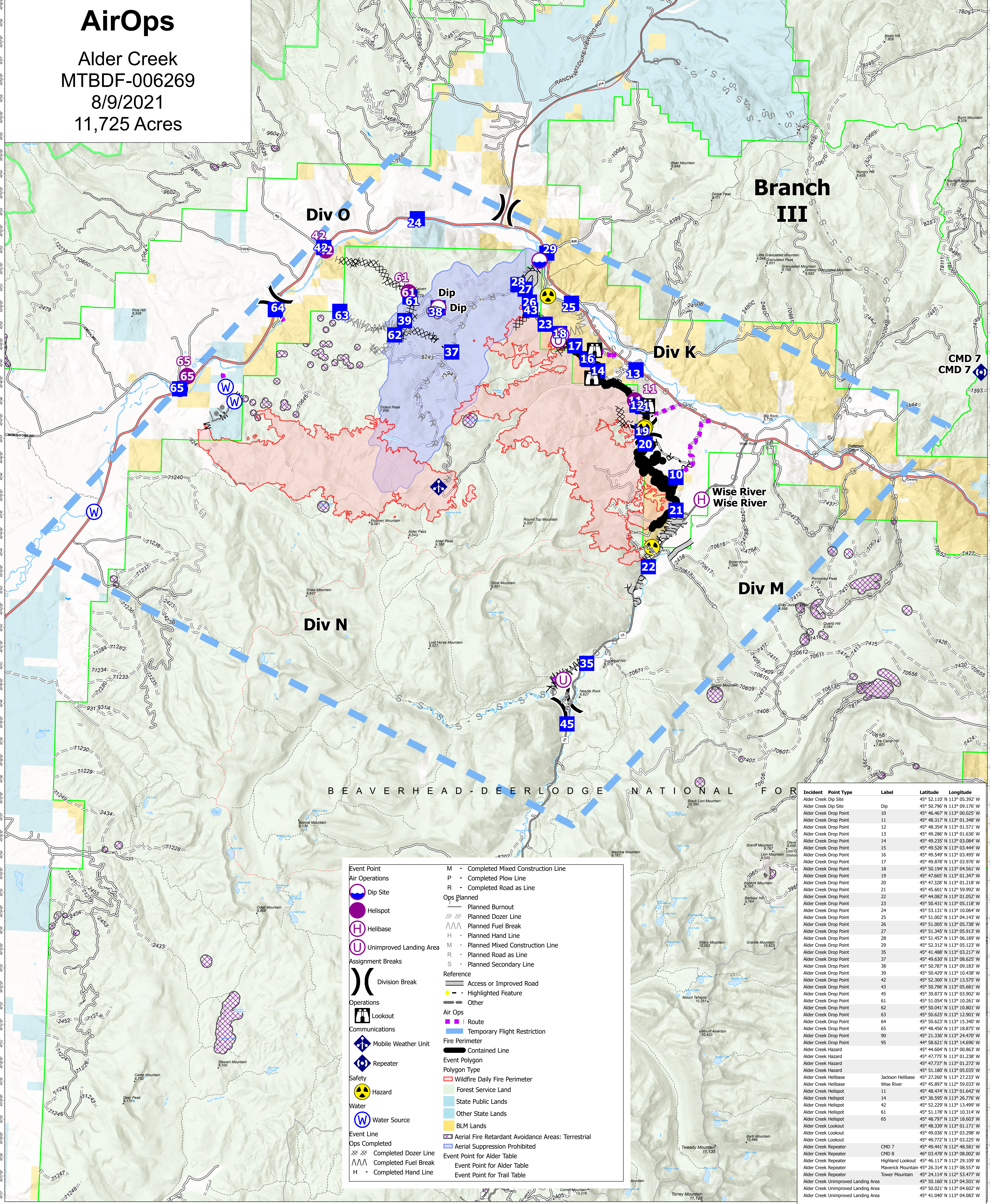


AirOps

Alder Creek
MTBDF-006269
8/9/2021
11,725 Acres



	Event Point	M - Completed Mixed Construction Line
	Air Operations	P - Completed Plow Line
	Dip Site	R - Completed Road as Line
	Helispot	Ops Planned
	Helibase	Planned Burnout
	Unimproved Landing Area	Planned Dozer Line
	Assignment Breaks	Planned Fuel Break
	Division Break	H - Planned Hand Line
	Operations	M - Planned Mixed Construction Line
	Lookout	R - Planned Road as Line
	Communications	S - Planned Secondary Line
	Mobile Weather Unit	Reference
	Repeater	Access or Improved Road
	Safety	Highlighted Feature
	Hazard	Other
	Water	Air Ops
	Water Source	Route
	Event Line	Temporary Flight Restriction
	Ops Completed	Fire Perimeter
	Completed Dozer Line	Contained Line
	Completed Fuel Break	Event Polygon
	Completed Hand Line	Polygon Type
		Wildfire Daily Fire Perimeter
		Forest Service Land
		State Public Lands
		Other State Lands
		BLM Lands
		Aerial Fire Retardant Avoidance Areas: Terrestrial
		Aerial Suppression Prohibited
		Event Point for Alder Table
		Event Point for Alder Table
		Event Point for Trail Table

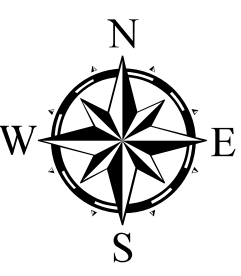
Incident	Point Type	Label	Latitude	Longitude
Alder Creek Dip Site	Dip		45° 52.110' N 113° 05.392' W	
Alder Creek Dip Site	Dip		45° 50.796' N 113° 09.176' W	
Alder Creek Drop Point	10		45° 46.467' N 113° 00.025' W	
Alder Creek Drop Point	11		45° 48.317' N 113° 01.348' W	
Alder Creek Drop Point	12		45° 48.354' N 113° 01.571' W	
Alder Creek Drop Point	13		45° 49.286' N 113° 01.626' W	
Alder Creek Drop Point	14		45° 49.235' N 113° 03.084' W	
Alder Creek Drop Point	15		45° 49.526' N 113° 03.444' W	
Alder Creek Drop Point	16		45° 49.549' N 113° 03.495' W	
Alder Creek Drop Point	17		45° 49.878' N 113° 03.976' W	
Alder Creek Drop Point	18		45° 50.194' N 113° 04.561' W	
Alder Creek Drop Point	19		45° 47.665' N 113° 01.347' W	
Alder Creek Drop Point	20		45° 47.328' N 113° 01.218' W	
Alder Creek Drop Point	21		45° 45.601' N 112° 59.992' W	
Alder Creek Drop Point	22		45° 44.082' N 113° 01.052' W	
Alder Creek Drop Point	23		45° 50.431' N 113° 05.118' W	
Alder Creek Drop Point	24		45° 53.131' N 113° 00.064' W	
Alder Creek Drop Point	25		45° 51.654' N 113° 01.042' W	
Alder Creek Drop Point	26		45° 51.005' N 113° 05.738' W	
Alder Creek Drop Point	27		45° 51.345' N 113° 05.913' W	
Alder Creek Drop Point	28		45° 51.457' N 113° 06.189' W	
Alder Creek Drop Point	29		45° 52.312' N 113° 05.123' W	
Alder Creek Drop Point	35		45° 41.488' N 113° 03.217' W	
Alder Creek Drop Point	37		45° 49.630' N 113° 08.625' W	
Alder Creek Drop Point	38		45° 50.787' N 113° 09.183' W	
Alder Creek Drop Point	39		45° 50.429' N 113° 10.438' W	
Alder Creek Drop Point	42		45° 52.300' N 113° 13.575' W	
Alder Creek Drop Point	43		45° 50.796' N 113° 05.681' W	
Alder Creek Drop Point	45		45° 39.873' N 113° 03.902' W	
Alder Creek Drop Point	61		45° 51.654' N 113° 01.042' W	
Alder Creek Drop Point	62		45° 50.041' N 113° 10.801' W	
Alder Creek Drop Point	63		45° 50.625' N 113° 12.901' W	
Alder Creek Drop Point	64		45° 50.623' N 113° 15.340' W	
Alder Creek Drop Point	65		45° 48.456' N 113° 18.875' W	
Alder Creek Drop Point	90		45° 21.336' N 113° 24.470' W	
Alder Creek Drop Point	95		44° 58.621' N 113° 14.696' W	
Alder Creek Hazard			45° 44.604' N 113° 00.863' W	
Alder Creek Hazard			45° 47.775' N 113° 01.238' W	
Alder Creek Hazard			45° 47.737' N 113° 01.272' W	
Alder Creek Hazard			45° 51.180' N 113° 05.035' W	
Alder Creek Helibase	Jackson Helibase		45° 27.260' N 113° 27.233' W	
Alder Creek Helibase	Wise River		45° 45.857' N 112° 59.033' W	
Alder Creek Helispot	11		45° 48.474' N 113° 01.042' W	
Alder Creek Helispot	14		45° 36.595' N 113° 26.776' W	
Alder Creek Helispot	42		45° 52.229' N 113° 13.499' W	
Alder Creek Helispot	61		45° 51.178' N 113° 10.314' W	
Alder Creek Helispot	65		45° 48.797' N 113° 18.603' W	
Alder Creek Lookout			45° 48.339' N 113° 01.171' W	
Alder Creek Lookout			45° 49.036' N 113° 03.298' W	
Alder Creek Lookout			45° 49.772' N 113° 03.225' W	
Alder Creek Repeater	CMD 7		45° 49.441' N 112° 48.581' W	
Alder Creek Repeater	CMD 8		46° 03.478' N 113° 08.002' W	
Alder Creek Repeater	Highland Lookout		45° 46.117' N 112° 29.109' W	
Alder Creek Repeater	Maverick Mountain		45° 26.314' N 113° 08.357' W	
Alder Creek Repeater	Tower Mountain		45° 24.114' N 112° 53.777' W	
Alder Creek Unimproved Landing Area			45° 50.160' N 113° 04.501' W	
Alder Creek Unimproved Landing Area			45° 50.021' N 113° 04.602' W	
Alder Creek Unimproved Landing Area			45° 41.040' N 113° 04.083' W	

Flight Restriction Information

Alder Creek - 1/7629- 12,500ft ceiling
Trail Creek - 1/7630 - 11,500ft ceiling
Black Mountain - 1/1730 - 10,500ft ceiling



SA Blue Team
8/9/2021 0818
North American 1983 Datum. LatLong Grid



Fire perimeter updated from
Acres from IR on 08/09/21 01:01

0 1 2 3 4 Miles
Scale: 1:54,688
1 inch equals 1 mile