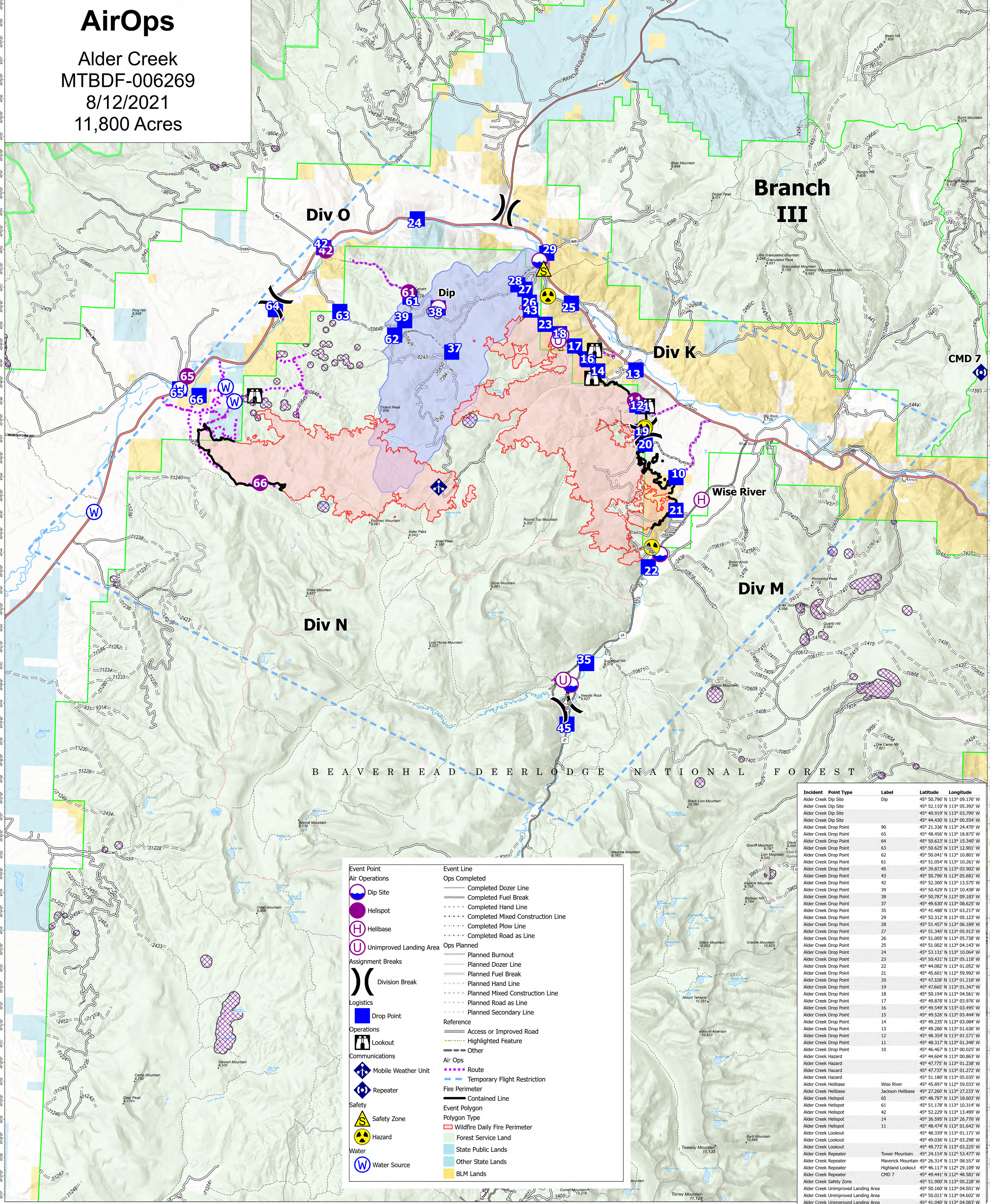


AirOps

Alder Creek
MTBDF-006269
8/12/2021
11,800 Acres



Incident	Point Type	Label	Latitude	Longitude
Alder Creek Dip Site	Dip	Dip	45° 50.796' N 113° 09.176' W	
Alder Creek Dip Site	Dip		45° 52.110' N 113° 05.392' W	
Alder Creek Dip Site	Dip		45° 40.919' N 113° 03.799' W	
Alder Creek Dip Site	Dip		45° 44.430' N 113° 00.554' W	
Alder Creek Drop Point	90		45° 41.236' N 113° 24.470' W	
Alder Creek Drop Point	65		45° 48.550' N 113° 18.975' W	
Alder Creek Drop Point	64		45° 50.623' N 113° 15.340' W	
Alder Creek Drop Point	63		45° 50.625' N 113° 12.901' W	
Alder Creek Drop Point	62		45° 50.041' N 113° 10.801' W	
Alder Creek Drop Point	61		45° 51.054' N 113° 10.261' W	
Alder Creek Drop Point	45		45° 39.873' N 113° 03.902' W	
Alder Creek Drop Point	43		45° 50.796' N 113° 05.681' W	
Alder Creek Drop Point	42		45° 52.300' N 113° 13.575' W	
Alder Creek Drop Point	39		45° 50.429' N 113° 10.438' W	
Alder Creek Drop Point	38		45° 50.787' N 113° 09.183' W	
Alder Creek Drop Point	37		45° 49.630' N 113° 08.625' W	
Alder Creek Drop Point	35		45° 41.488' N 113° 03.217' W	
Alder Creek Drop Point	29		45° 52.121' N 113° 03.916' W	
Alder Creek Drop Point	28		45° 51.457' N 113° 06.189' W	
Alder Creek Drop Point	27		45° 51.345' N 113° 05.913' W	
Alder Creek Drop Point	26		45° 51.005' N 113° 05.738' W	
Alder Creek Drop Point	25		45° 51.002' N 113° 04.143' W	
Alder Creek Drop Point	24		45° 53.131' N 113° 10.064' W	
Alder Creek Drop Point	23		45° 50.431' N 113° 05.118' W	
Alder Creek Drop Point	22		45° 44.082' N 113° 01.052' W	
Alder Creek Drop Point	21		45° 45.601' N 113° 59.992' W	
Alder Creek Drop Point	20		45° 47.328' N 113° 01.218' W	
Alder Creek Drop Point	19		45° 47.665' N 113° 01.347' W	
Alder Creek Drop Point	18		45° 50.194' N 113° 04.561' W	
Alder Creek Drop Point	17		45° 49.878' N 113° 03.916' W	
Alder Creek Drop Point	16		45° 49.549' N 113° 03.955' W	
Alder Creek Drop Point	15		45° 49.526' N 113° 03.444' W	
Alder Creek Drop Point	14		45° 49.235' N 113° 03.084' W	
Alder Creek Drop Point	13		45° 49.286' N 113° 01.636' W	
Alder Creek Drop Point	12		45° 48.354' N 113° 01.571' W	
Alder Creek Drop Point	11		45° 48.317' N 113° 01.348' W	
Alder Creek Drop Point	10		45° 46.467' N 113° 00.025' W	
Alder Creek Hazard			45° 44.604' N 113° 00.863' W	
Alder Creek Hazard			45° 47.775' N 113° 01.238' W	
Alder Creek Hazard			45° 47.737' N 113° 01.272' W	
Alder Creek Hazard			45° 51.180' N 113° 05.035' W	
Alder Creek Helibase	Wise River		45° 45.807' N 112° 59.033' W	
Alder Creek Helibase	Jackson Helibase		45° 47.260' N 113° 27.233' W	
Alder Creek Helispot	65		45° 48.797' N 113° 18.603' W	
Alder Creek Helispot	61		45° 51.178' N 113° 10.314' W	
Alder Creek Helispot	42		45° 52.229' N 113° 13.499' W	
Alder Creek Helispot	14		45° 36.595' N 113° 26.776' W	
Alder Creek Helispot	11		45° 48.474' N 113° 01.642' W	
Alder Creek Lookout			45° 48.339' N 113° 01.171' W	
Alder Creek Lookout			45° 49.036' N 113° 03.298' W	
Alder Creek Lookout			45° 49.772' N 113° 03.225' W	
Alder Creek Repeater	Tower Mountain		45° 24.114' N 112° 53.477' W	
Alder Creek Repeater	Maverick Mountain		45° 26.314' N 113° 08.557' W	
Alder Creek Repeater	Highland Lookout		45° 46.117' N 112° 29.109' W	
Alder Creek Safety Zone	CMD 7		45° 49.441' N 112° 48.581' W	
Alder Creek Unimproved Landing Area			45° 51.900' N 113° 05.228' W	
Alder Creek Unimproved Landing Area			45° 50.160' N 113° 04.501' W	
Alder Creek Unimproved Landing Area			45° 50.021' N 113° 04.602' W	
Alder Creek Unimproved Landing Area			45° 41.040' N 113° 04.083' W	

Event Point	Event Line
Dip Site	Completed Dozer Line
Helispot	Completed Fuel Break
Helibase	Completed Hand Line
Unimproved Landing Area	Completed Mixed Construction Line
Division Break	Completed Plow Line
Drop Point	Completed Road as Line
Lookout	Planned Burnout
Mobile Weather Unit	Planned Dozer Line
Repeater	Planned Fuel Break
Safety Zone	Planned Hand Line
Hazard	Planned Mixed Construction Line
Water Source	Planned Road as Line
	Planned Secondary Line
	Access or Improved Road
	Highlighted Feature
	Other
	Air Ops Route
	Temporary Flight Restriction
	Fire Perimeter Contained Line
	Wildfire Daily Fire Perimeter
	Forest Service Land
	State Public Lands
	Other State Lands
	BLM Lands

Flight Restriction Information
 Alder Creek - 1/7629- 12,500ft ceiling
 Trail Creek - 1/7630 - 11,500ft ceiling
 Black Mountain - 1/1730 - 10,500ft ceiling

Fire perimeter updated from Acres from IR on 08/11/21 00:08

Scale: 1:54,688
1 inch equals 1 mile

SA Blue Team
8/11/2021 1958
North American 1983 Datum. LatLong Grid